

NOTES

FILL & SOIL PREPARATION UNDER BUILDING SLAB
Strip existing vegetation & top soil a min. of 8" deep.

SOIL PREPARATION UNDER PAVEMENT:
Strip existing vegetation & top soil a min. of 8" deep.

INDEX

- ARCHITECTURAL
A1 TILE SHEET, SITE PLAN, & INDEX
A2 FLOOR PLAN & SECTIONS
A3 ELEVATIONS
A4 DETAILS
STRUCTURAL
S1 FOUNDATION PLAN & SECTIONS
S2 ROOF FRAMING PLAN & SECTIONS
S3 GENERAL NOTES & MISC. DETAILS

HH #1 Ring Elevation 104.78
-6.28 F.L. 8' West
-8.94 F.L. 10' East
HH #2 Rock Road Ring Elevation 103.34
-8.04 F.L. 10' West
-11.99 F.L. 12' North
-12.04 F.L. 12' South

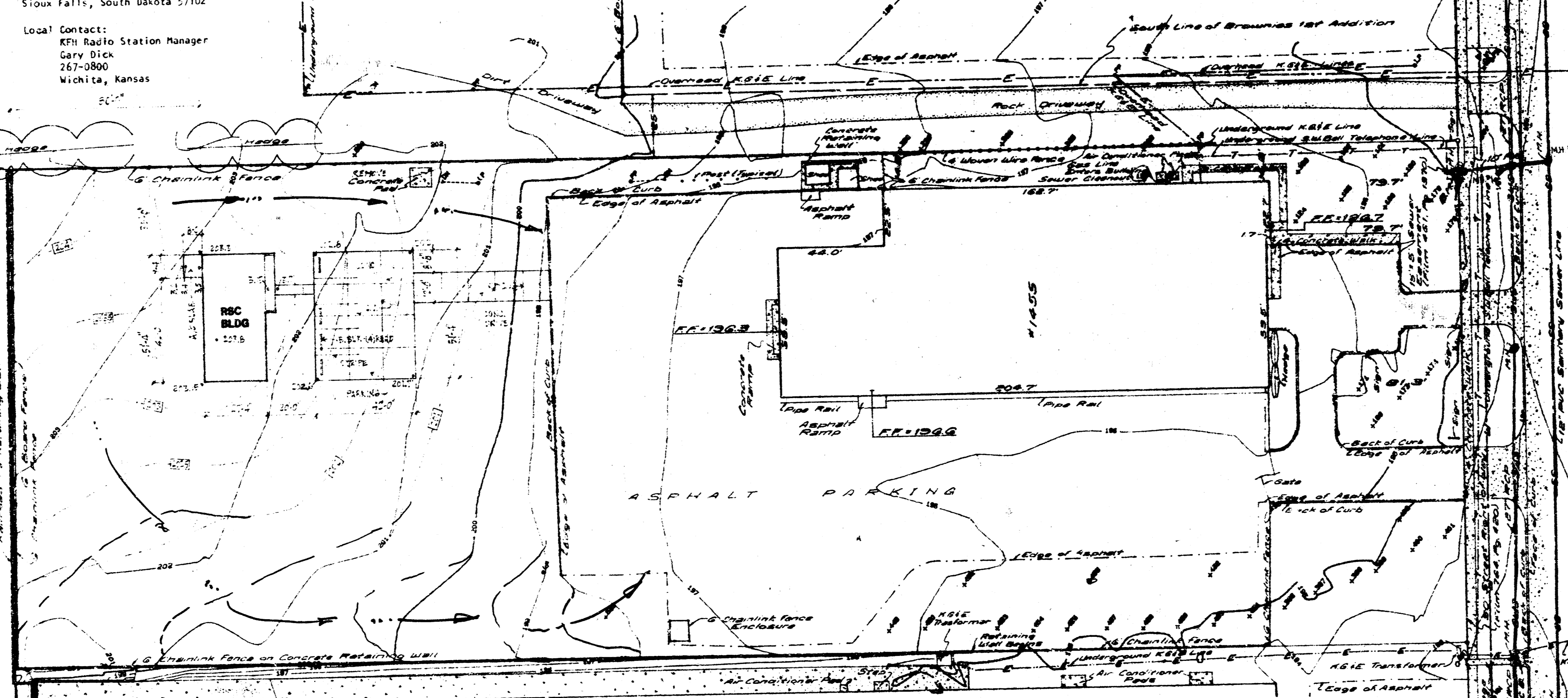
TREE LIST

Table with columns: POINT NO., DESCRIPTION, TREE DIA., CLEARANCE. Lists various trees and their specifications.

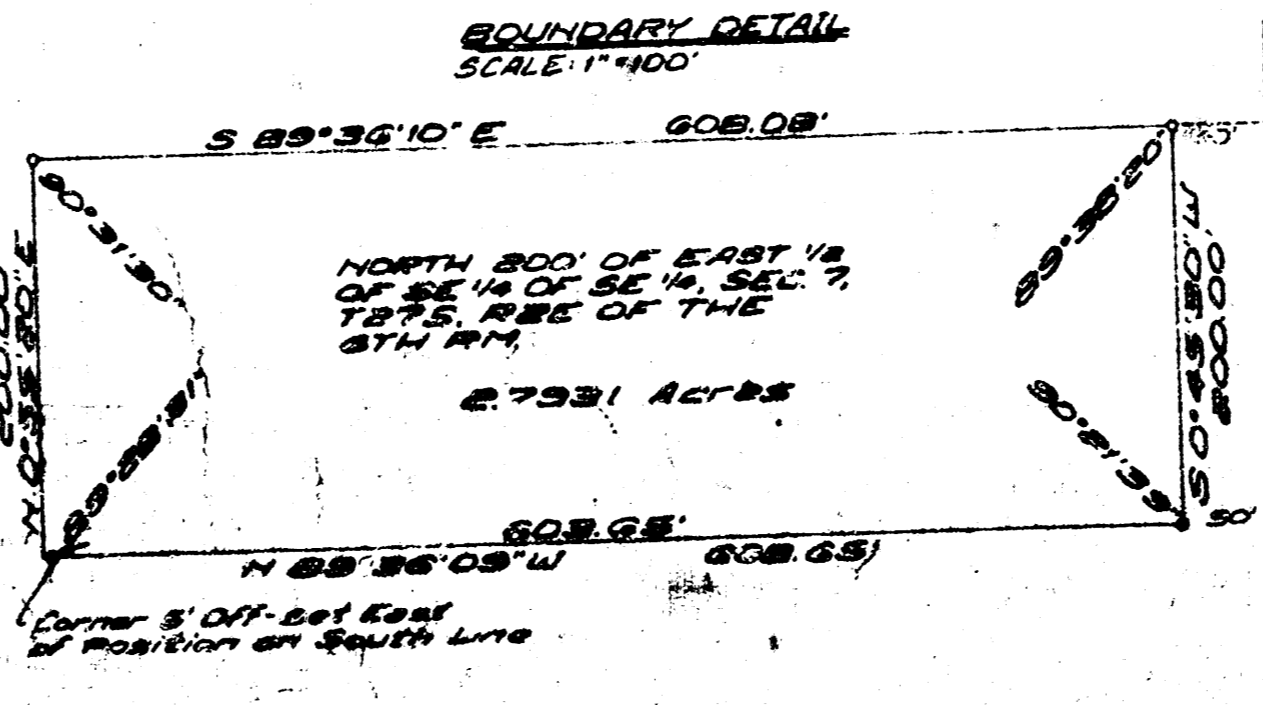
0.24 ACRES OF NE 1/4 OF SE 1 SEC. 7, T22S, R2E OF THE 6TH P.M., EXCEPT BRONKES 1ST ADDITION.
Wichita Realty Associates, Inc.
261 S. Phillips Avenue
Wichita, Kansas 67202

SOUTH 100' OF LOT 8 BLOCK A BRONKES 1ST ADDITION
Between K. No. 8 & Severn K. No. 8001 Brookholme
Wichita, Kansas 67202

South line of NE 1/4 of SE 1 SEC. 7, T22S, R2E of the 6TH P.M.



SITE PLAN 1" = 30'



BOUNDARY DETAIL SCALE 1"=40'

Drainage Concept
RSC BUILDING
SOUTHWESTERN BELL TELEPHONE CO.
1455 N. ROCK ROAD WICHITA, KS.

WORK TO BE INCLUDED IN PHASE 1:

- All concrete and required accessories (insulation, sleeves, conduits, etc.) up to elevation 100.
Drives, sidewalks, & mechanical slab.
Rebar into masonry from slab.
Plumbing rough-in thru slabs and required plugs.

M 22 WKS
408-80509-001
L12-M
SCALE: 1"=40'
GENERAL NOTES:
SEWER LOCATIONS ARE FROM RECORD INFORMATION FROM CITY OF WICHITA CENTRAL SUBSECTION DIVISION.
LOCATIONS ARE SHOWN WHERE AVAILABLE ON THE TRINET (R 858588).
CONCO. PIPELINE (NO REPORT) HAS THE RELATIVE TO 1.88 SHOWN.
NAT. GAS SERVICE LOCATION FROM MULTIMEDIA CABLEVISION: NO LOCATION.
SOUTHWESTERN BELL TELEPHONE: NO LOCATION.
WICHITA WATER DEPARTMENT: NO LOCATION.
WICHITA PUBLIC SCHOOLS: REPORTED CLEAR.

BENCH MARK
BRONKES DISK
STATIONED 3 3/4" 1934 AND SET
IN THE 1/4" OF 1/4" CORNER
POINT 50' EAST OF CENTERLINE
OF ROCK ROAD, AND 181' SOUTH
OF CENTERLINE OF ST. LOUIS
SAN AND TRUST RAILROAD TRACKS
ELEVATION: 1065.174 MSL, 1972
CITY DATUM
#1 SITE BENCH MARK:
WICHITA 4" DIA. MANHOLE
ELEVATION: 1064.78 CITY DATUM

GENERAL NOTES:
SEWER LOCATIONS ARE FROM RECORD INFORMATION FROM CITY OF WICHITA CENTRAL SUBSECTION DIVISION.
LOCATIONS ARE SHOWN WHERE AVAILABLE ON THE TRINET (R 858588).
CONCO. PIPELINE (NO REPORT) HAS THE RELATIVE TO 1.88 SHOWN.
NAT. GAS SERVICE LOCATION FROM MULTIMEDIA CABLEVISION: NO LOCATION.
SOUTHWESTERN BELL TELEPHONE: NO LOCATION.
WICHITA WATER DEPARTMENT: NO LOCATION.
WICHITA PUBLIC SCHOOLS: REPORTED CLEAR.

RSC BLDG. - SOUTHWESTERN BELL TELEPHONE CO.
1455 N. ROCK ROAD WICHITA, KS.

PLANNERS
FRANKLYN ASSOCIATES ARCHITECTS AIA
100 N. DOUGLAS WICHITA, KANSAS 67202

Sheet 1 of 2