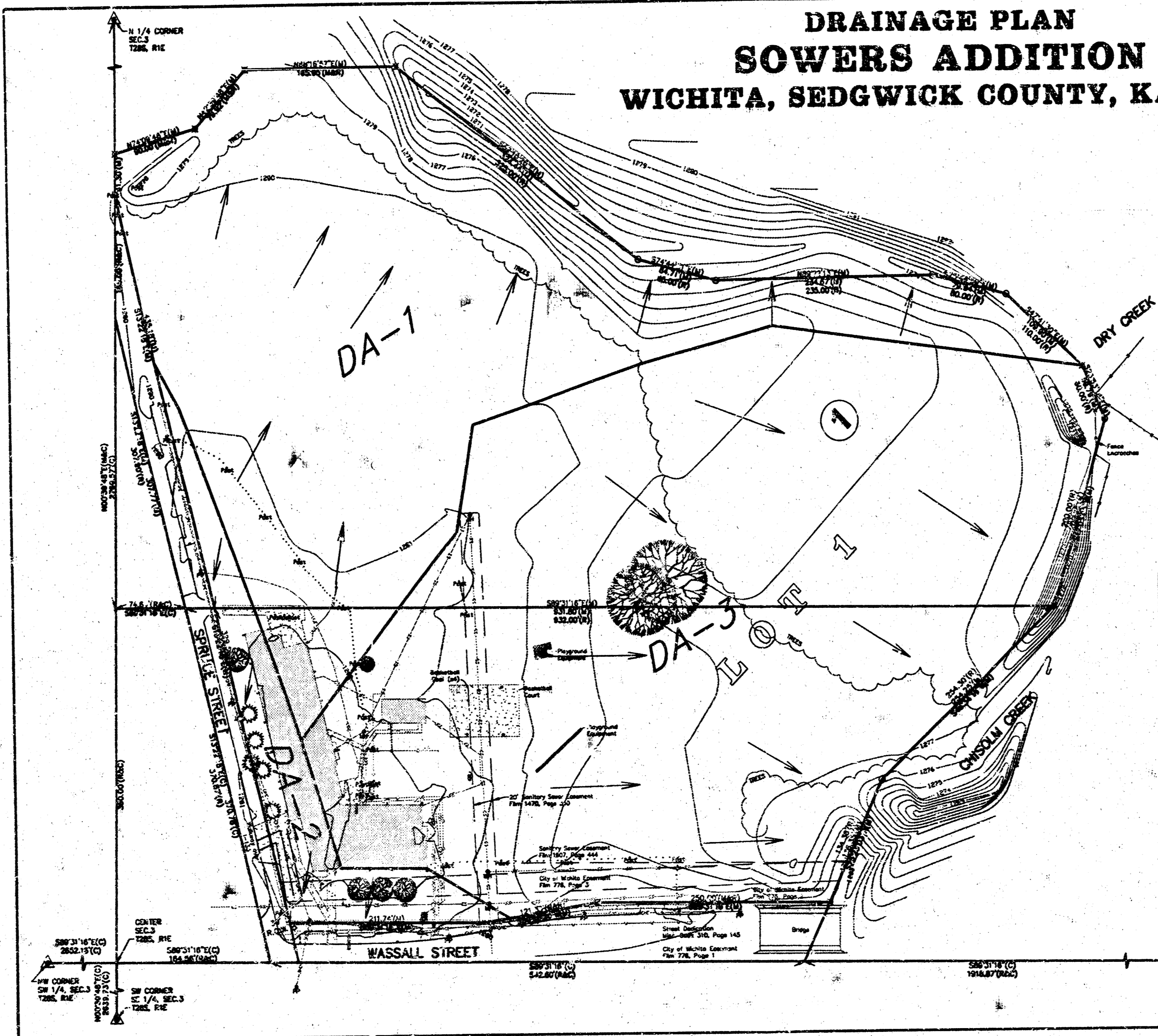
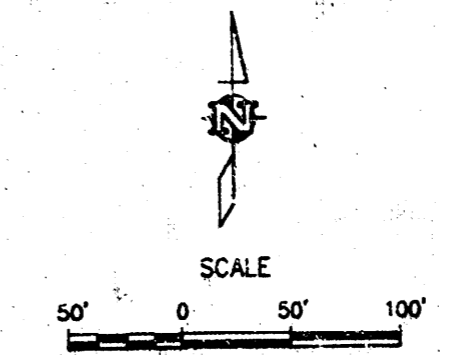


**DRAINAGE PLAN
SOWERS ADDITION
WICHITA, SEDGWICK COUNTY, KANSAS**



Area #	Area	S	Unimproved		Developed		
			sq. ft.	sq. ft.	sq. ft.	sq. ft.	
1	5.59	4.58	7.37	8.9	22.7	17.6	33
2	.740	4.58	7.37	1.7	3.6	1.7	3.6
3	8.17	4.58	7.37	13	33.1	23.7	48.2
TOTAL	14.51	4.58	7.37	23.6	59.4	43	64.8

- NOTES:**
1. Determination of Stormwater location shall be at time of development.
 2. Detention requirements shall be determined at time of development.
 3. Off-site runoff shall be limited to:
 - DA-1: 22.7 cfs
 - DA-2: 3.6 cfs
 - DA-3: 23.7 cfs

PAGE 2 OF 2

