

Timber Chapel Add'n

SKETCH PLAT

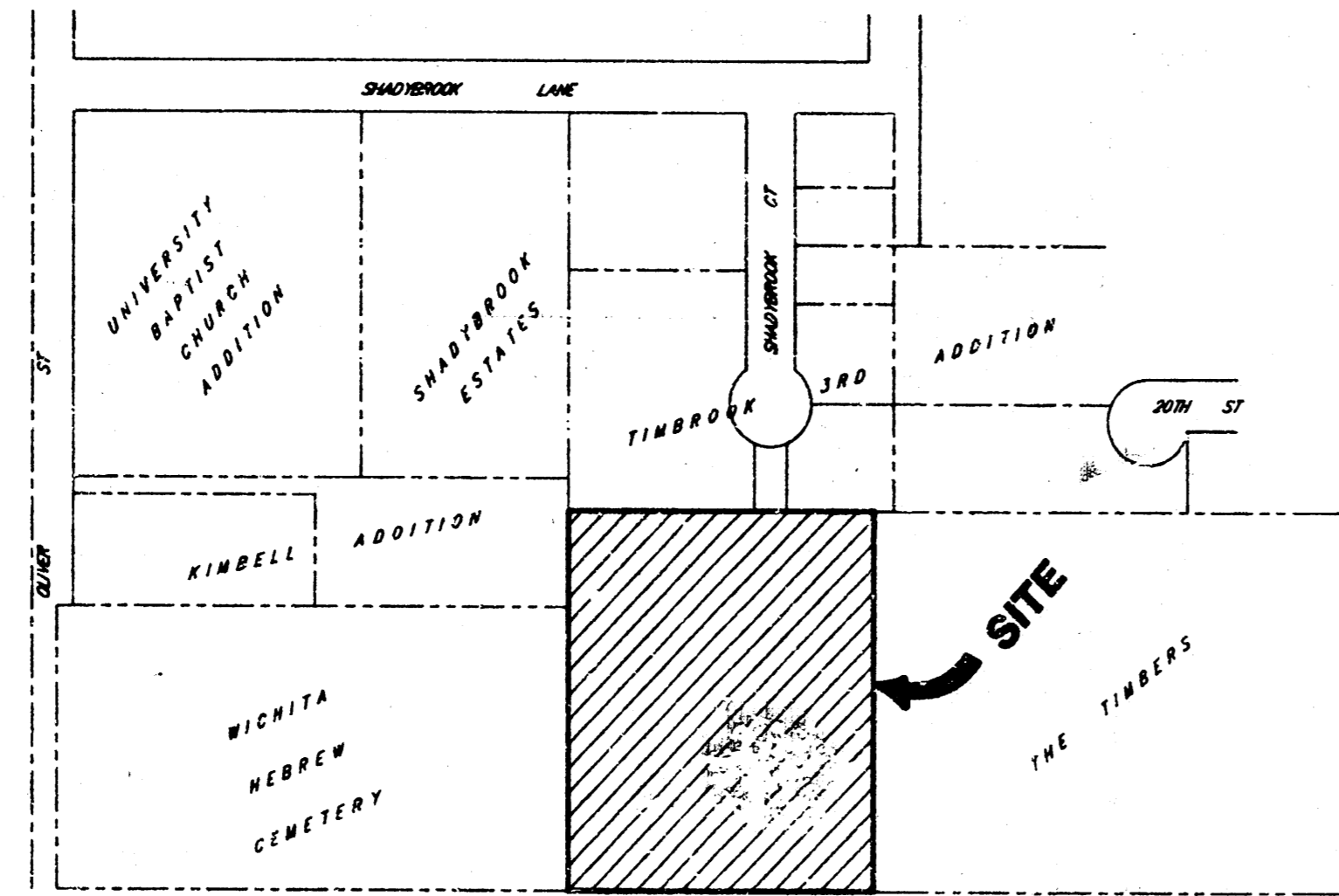
# TIMBER CHAPEL ADDITION

WICHITA, SEDGWICK COUNTY, KANSAS.

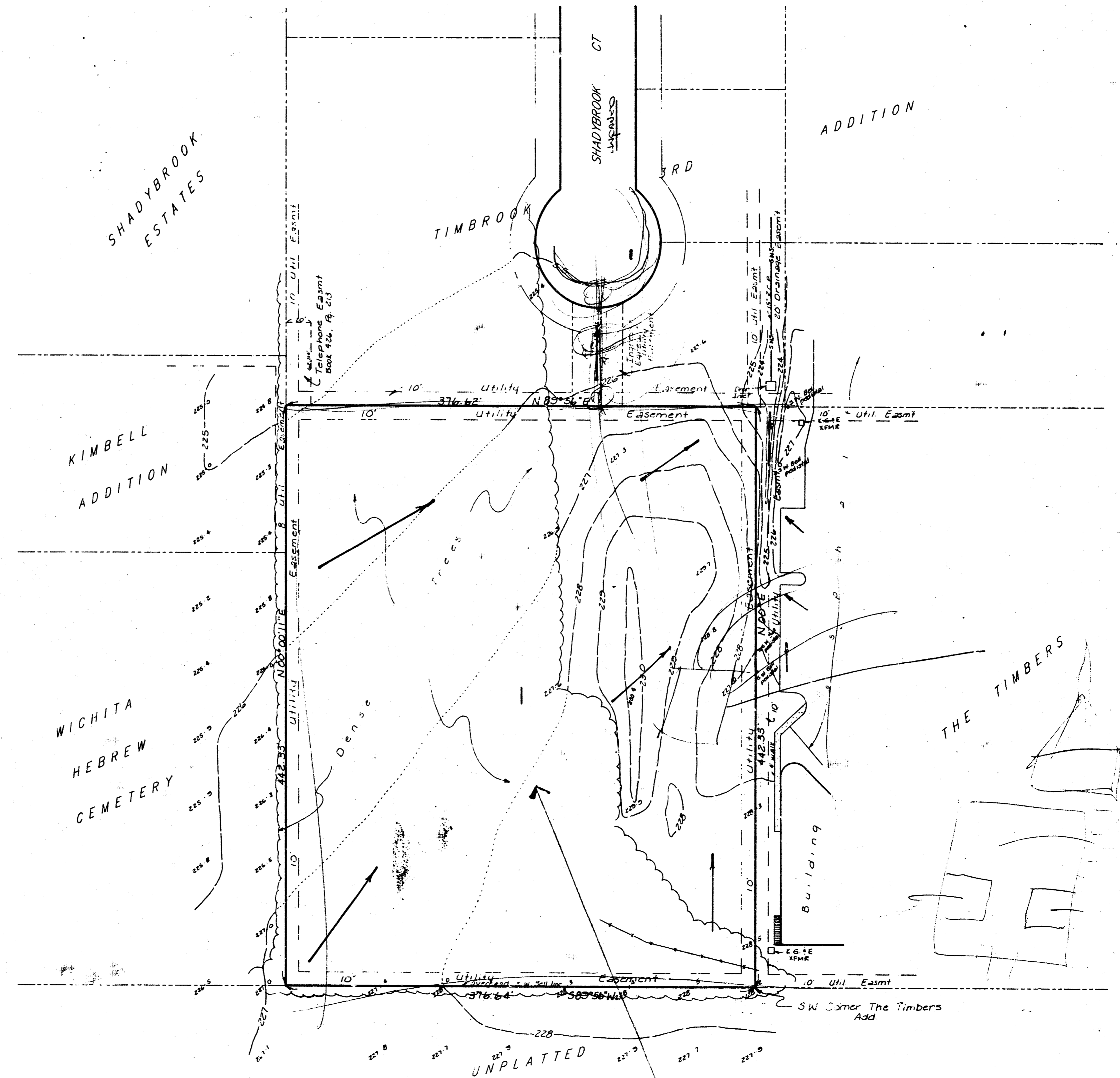
Tract in the NW 1/4 of Sec. 12, Twp. 27-S, R-1-E of the 6th P.M.  
Sedgwick County, Kansas.



Bench Mark:  
Disc stamped 232, 1944, 36 feet  
south and 32 feet west of the  
centerlines of Oliver & 17th St. &  
E 1/2 south of E.E. Signal light.  
Elev. = 251.08 City Datum.



VICINITY MAP



DA 28 AC 00 00  
PL 45 CFS  
PWP 28 CFS

Note - This lot is to be developed as a small church chapel  
site - Very little of the area will be paved. Resulting  
runoff factor = 0.30. Runoff will be directed to NE  
corner of lot to an existing storm sewer and drainage  
area within a 20' drainage easement to street.

## DRAINAGE PLAN

BAUGHMAN COMPANY P. A.  
SURVEYING & ENGINEERING  
316/267-7271 • 315 ELLIS • WICHITA, KANSAS 67211