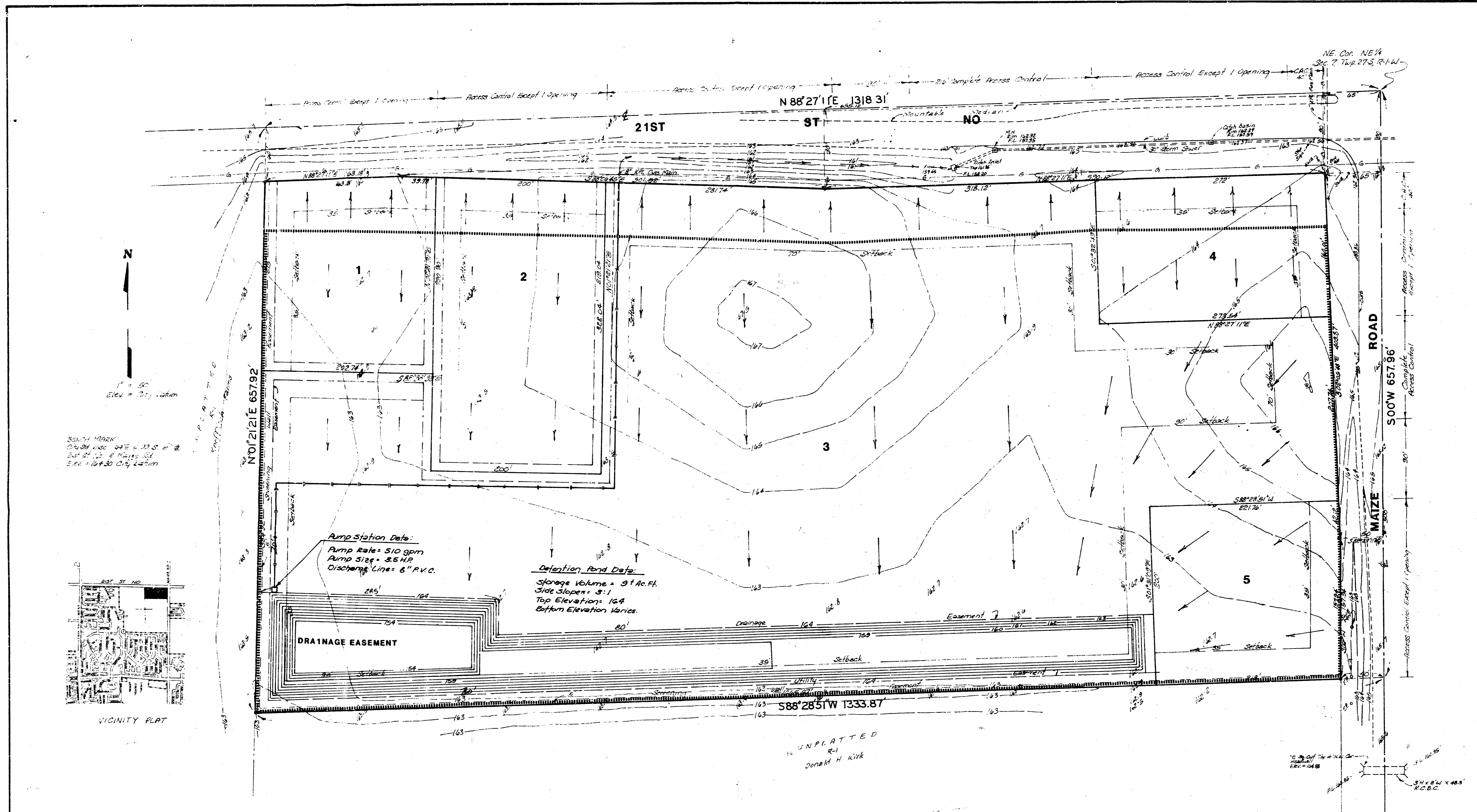
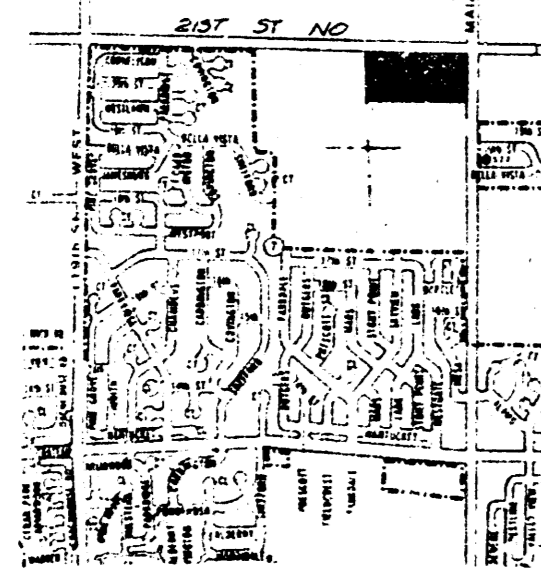


Tumber Ridge



SECT. MARK
 QUAD 140 045 010 012
 2nd St. to 2nd St. 1st
 Sec. 10 & 30 City Lot

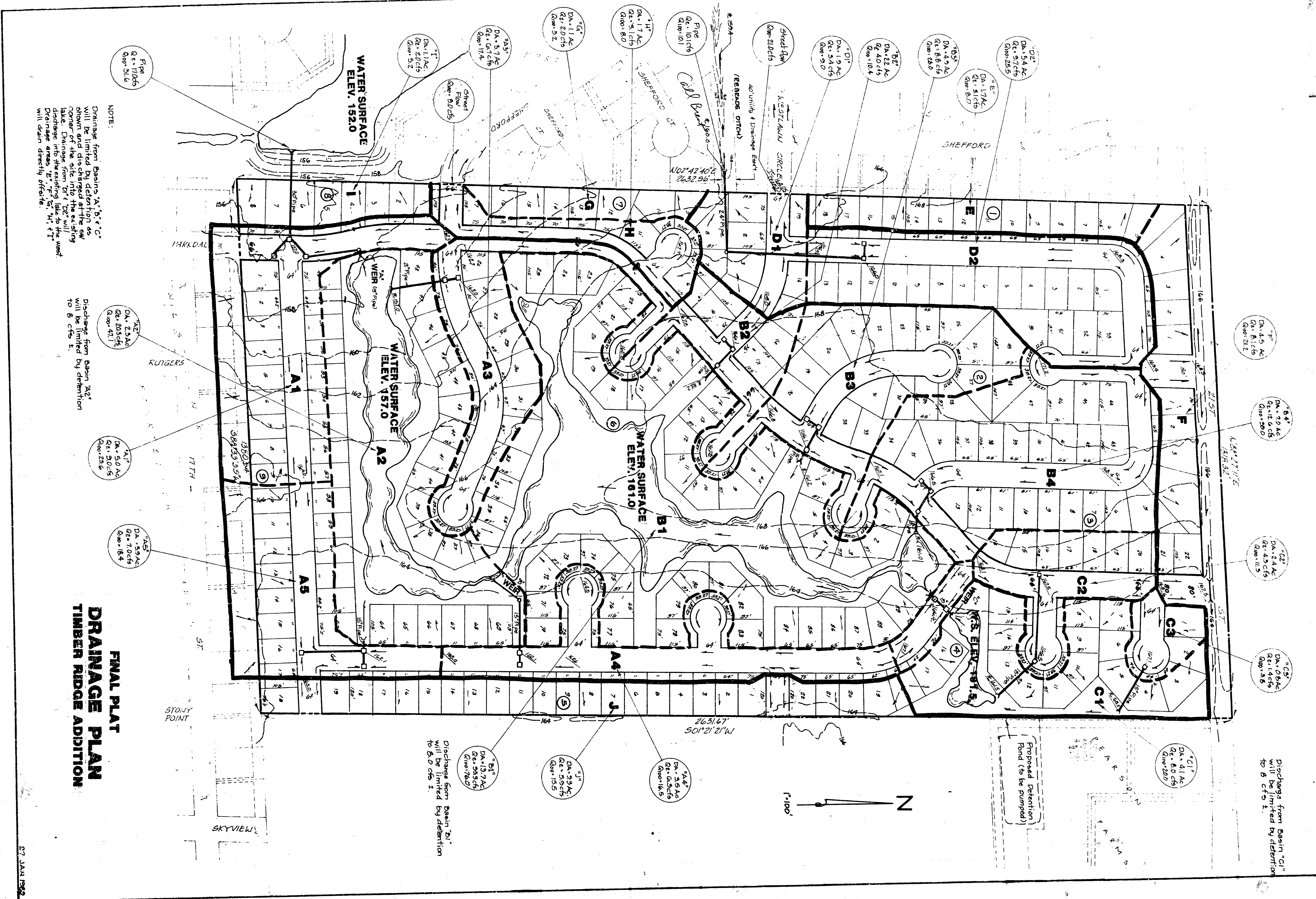


**PRELIMINARY PLAT
 PEARSON FARMS ADDITION**

N1/2, NE1/4, NE1/4, SEC 7, TWP 27-S, R-1-W

**BRUCE A. PEARSON
 ESTHER L. PEARSON**

BAUGHMAN COMPANY, P.A.
 SURVEYING & ENGINEERING
 316-262-7271 • 315 ELLIS • WICHITA, KANSAS 67211
 24 Nov 87
 316-187
 9 Oct 87



NOTE:
 Drainage from Basins A¹, B¹, C¹ will be limited by detention as shown and discharged at the SW corner of the site into the existing lake. Drainage from B² to the west discharge area, E¹, F¹, G¹, H¹, I¹, J¹ will drain directly offsite.

Discharge from Basin A² will be limited by detention to 6 cfs ±.

Discharge from Basin B¹ will be limited by detention to 6 cfs ±.

Discharge from Basin C¹ will be limited by detention to 6 cfs ±.

**FINAL PLAT
 DRAINAGE PLAN
 TIMBER RIDGE ADDITION**

27 JAN 1982