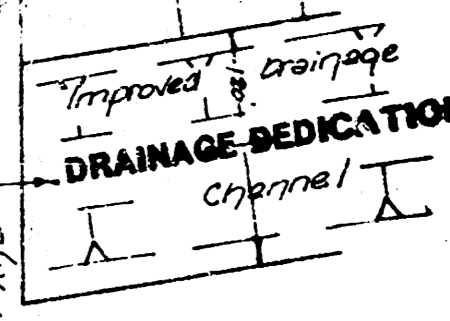
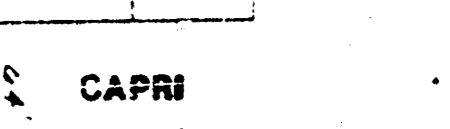
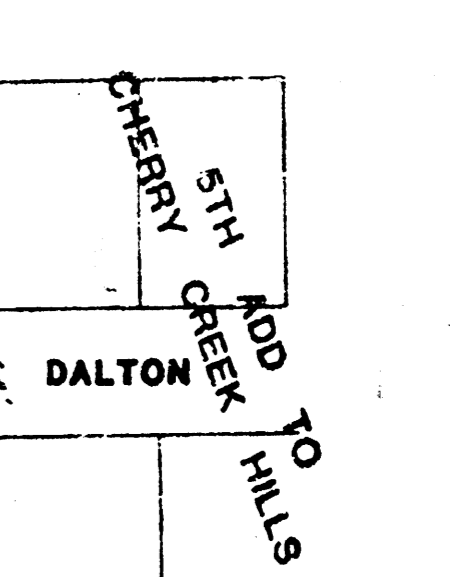
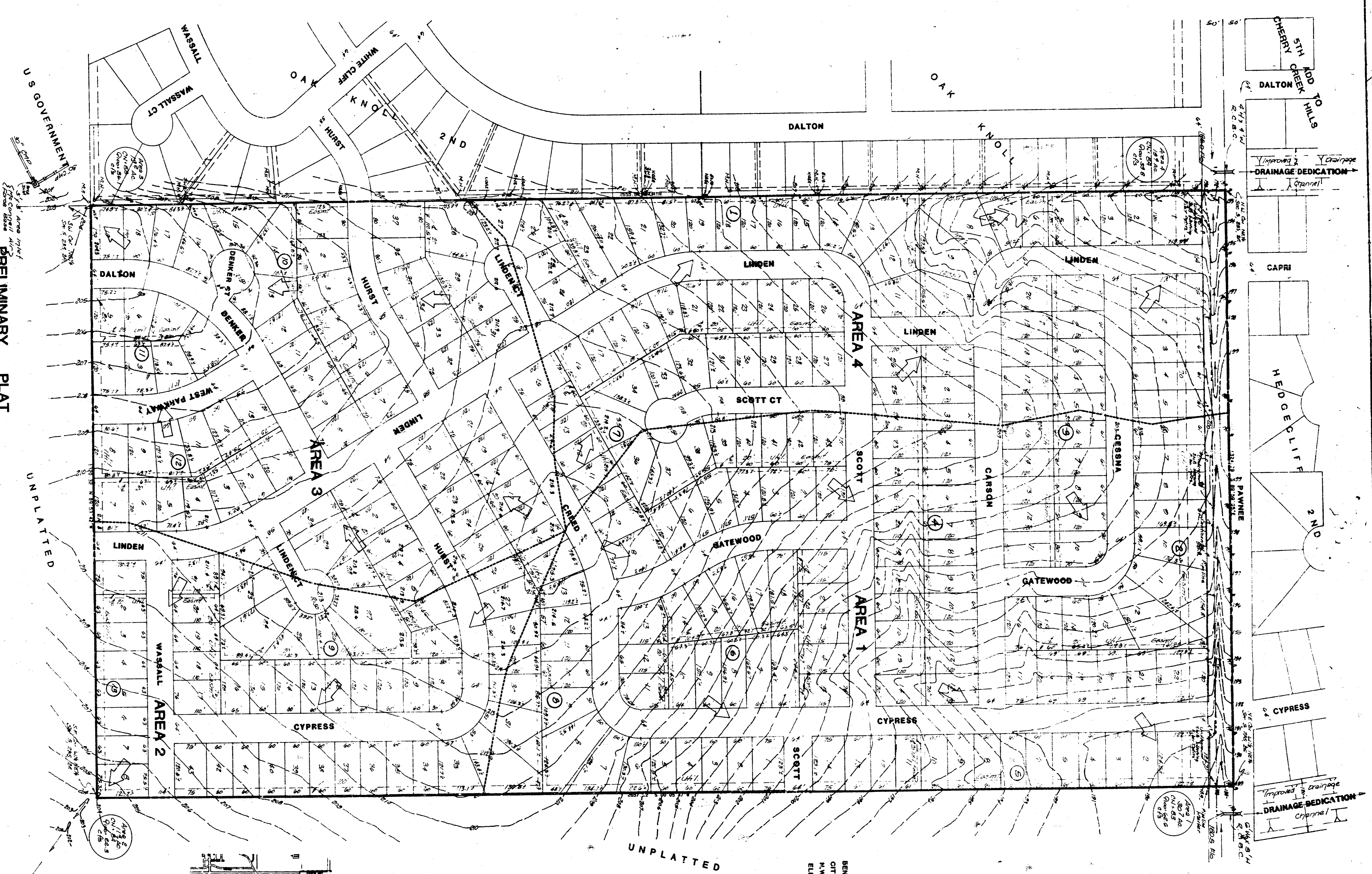


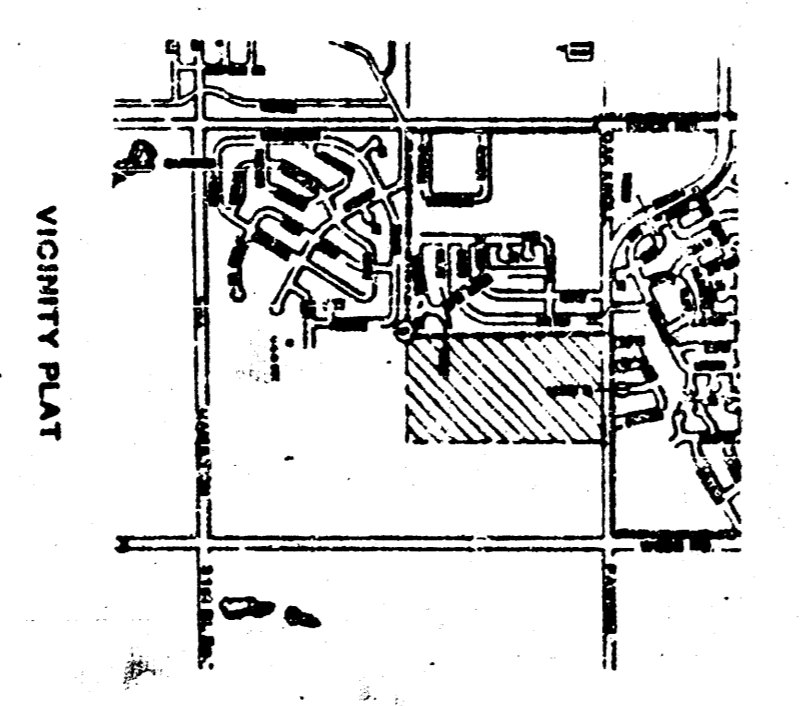
From Page 1st Add.



BEIGN MARK:
CITY STD DISC 48" S & 2" E OF
N.W. CORN OF NE 1/4 S-28-S, R-2-E
ELEV = 182,205 CITY DATUM

1" = 100'
ELEV = CITY DATUM
MAY 1987

N



TOWNE PARC ADDITION
PRELIMINARY PLAT

THE W 1/2 OF THE NE 1/4 OF SEC 5, TWP 28-S, R-2-E,
SEDGWICK COUNTY, KANSAS

BERNARD NOYCK

MAP 1

EXISTING DRAINAGE

BAUGHMAN COMPANY, P.A.
SURVEYING & ENGINEERING
3160 S. 27TH - 316 ELLIS - WICHITA, KANSAS 67211