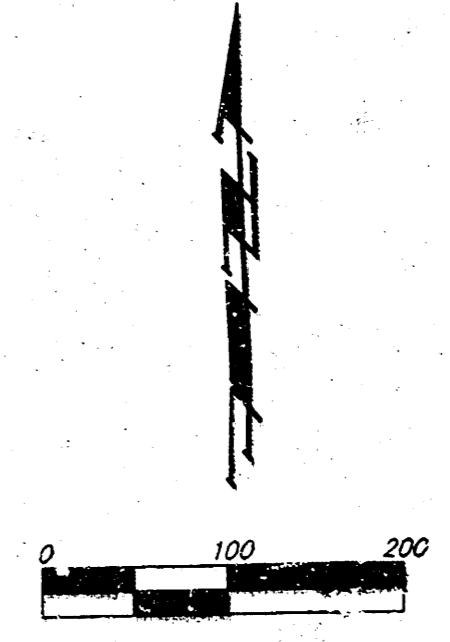
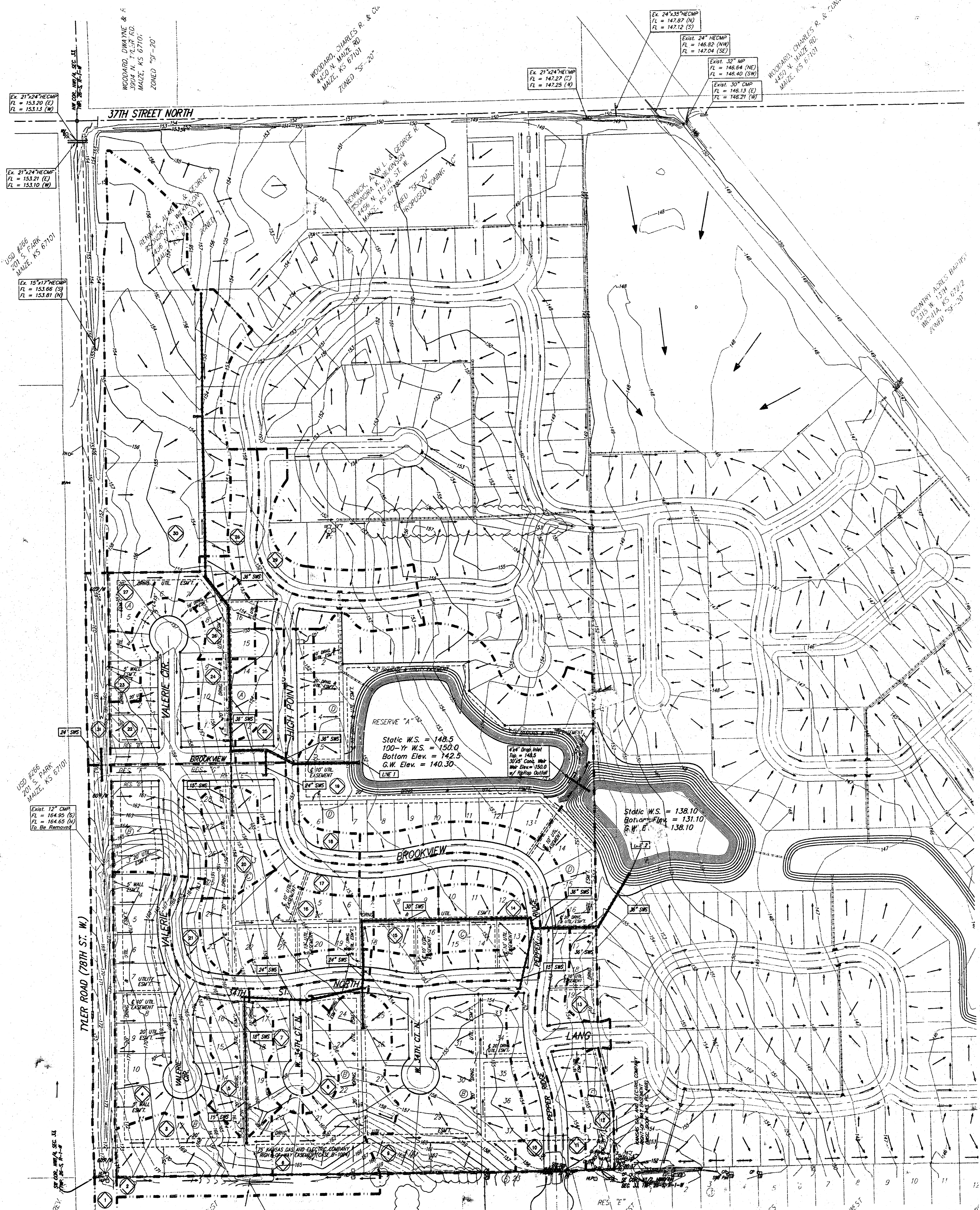


# TYLER'S LANDING ADDITION

## WICHITA, SEDGWICK COUNTY, KANSAS



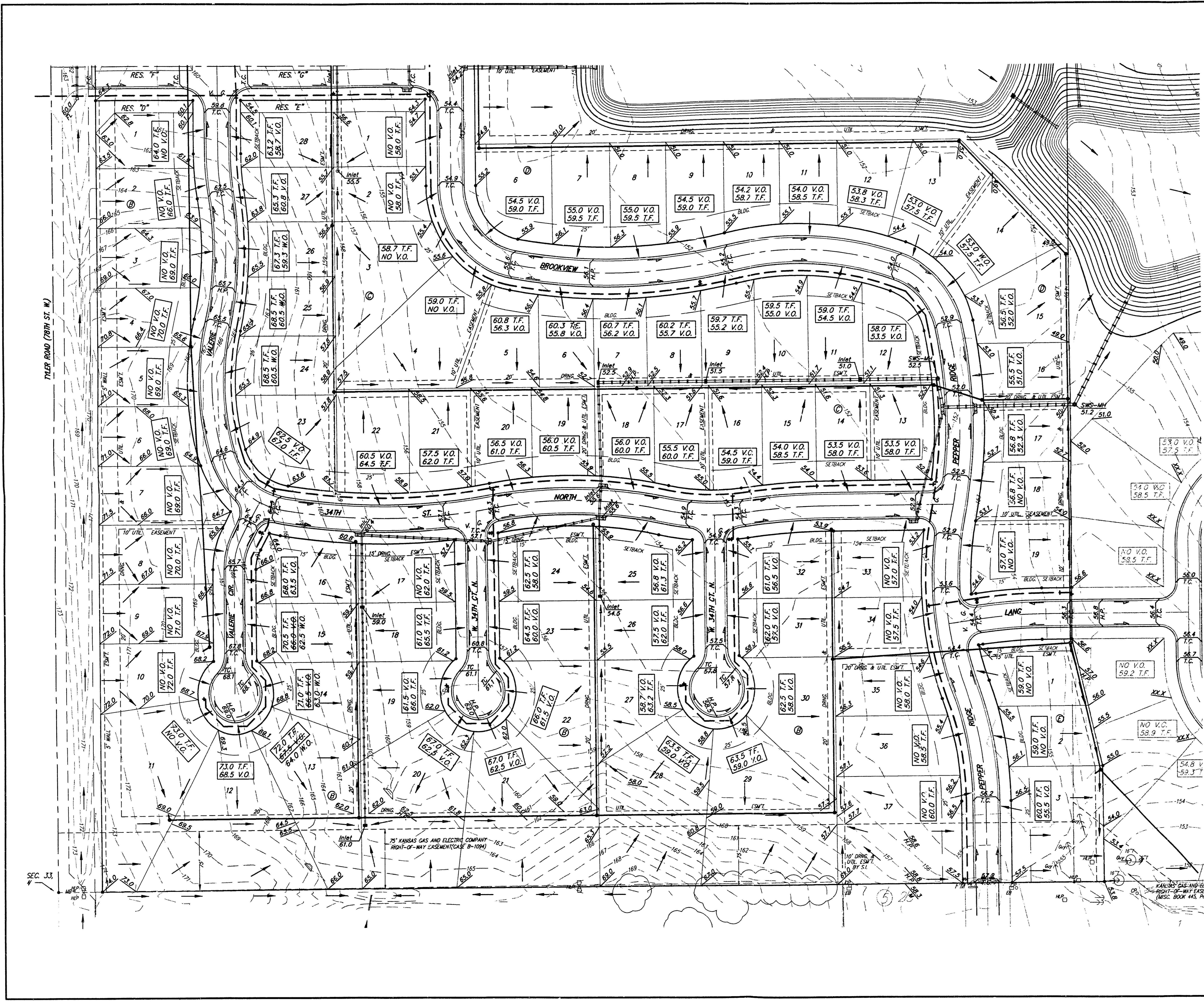
\* = 4" Diameter Meter (SM)  
 o = 3/4" Iron Pipe (FPM)  
 □ = 3/4" R.C.C. Box Pipe (FPM)  
 ● = 6" Meter (CROSS)

**BENCHMARK:**  
 CITY OF WICHITA BENCHMARK DISC -  
 SE. COR. OF THE INTERSECTION OF TYLER RD. &  
 37TH STREET NORTH  
 35.80' S. OF B.  
 30.00' E. OF P.  
 8.20' SE. OF P.P.  
 43.80' SE. OF SEC. COR. IRON  
 ELEV. = 178.04 CITY DATUM  
 135.44 NGVD29

LOT	BLOCK	CITY DATUM	NGVD29
2-15	D	1315	1340.9

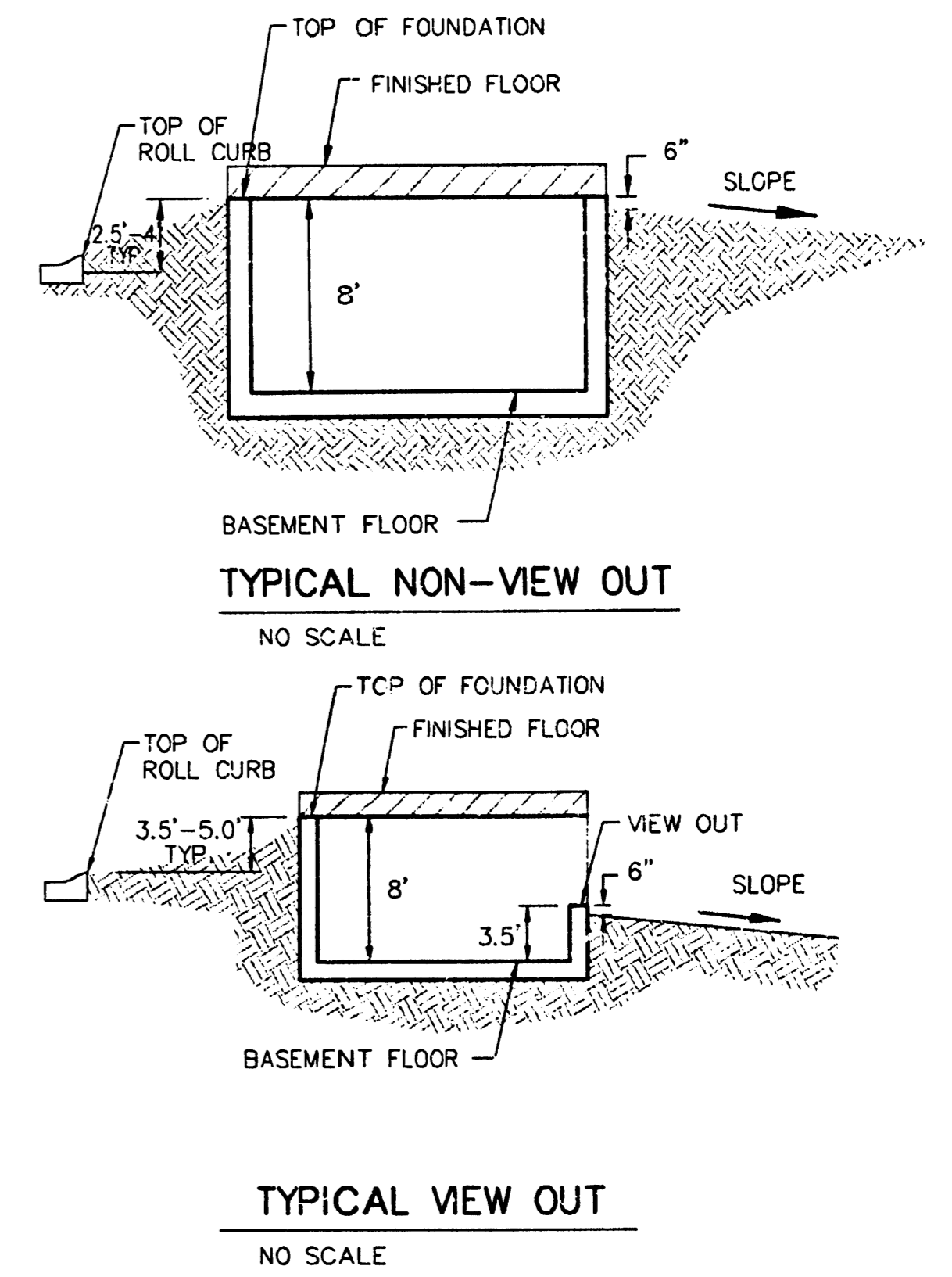
**Tyler's Landing Addition - Rational Method - Q = c/a - tc = 15 min.**

Basin	Area	C <sub>1</sub>	C <sub>2</sub>	C <sub>100</sub>	Q <sub>1</sub> (cfs)	Q <sub>2</sub> (cfs)	Q <sub>30</sub> (cfs)
1	3.26	0.44	0.46	0.61	5.5	6.8	14.7
2	0.79	0.44	0.46	0.61	1.3	1.7	3.6
3	1.31	0.44	0.46	0.61	2.2	2.7	5.9
4	3.04	0.44	0.46	0.61	5.1	6.4	13.7
5	1.07	0.44	0.46	0.61	1.8	2.2	4.8
6	1.99	0.44	0.46	0.61	3.4	4.2	8.9
7	0.80	0.44	0.46	0.61	1.3	1.7	3.6
8	0.59	0.44	0.46	0.61	0.9	1.0	2.2
9	3.58	0.44	0.46	0.61	6.2	7.7	16.5
10	2.58	0.44	0.46	0.61	4.3	5.4	11.6
11	2.46	0.44	0.46	0.61	4.1	5.2	11.1
12	0.49	0.44	0.46	0.61	0.8	1.0	2.2
13	1.18	0.44	0.46	0.61	2.0	2.5	5.3
14	0.79	0.44	0.46	0.61	1.3	1.7	3.6
15	0.61	0.44	0.46	0.61	1.0	1.3	2.7
16	1.74	0.44	0.46	0.61	2.9	3.6	7.8
17	2.83	0.44	0.46	0.61	4.3	5.3	11.4
18	0.99	0.44	0.46	0.61	1.7	2.1	4.5
19	7.54	0.44	0.46	0.61	12.7	15.8	33.8
20	0.91	0.44	0.46	0.61	1.5	1.9	4.1
21	1.13	0.44	0.46	0.61	1.9	2.4	5.1
22	1.90	0.44	0.46	0.61	3.2	4.0	8.5
23	0.31	0.44	0.46	0.61	0.5	0.7	1.4
24	0.69	0.44	0.46	0.61	1.2	1.4	3.1
25	0.88	0.44	0.46	0.61	1.1	1.4	3.1
26	0.57	0.44	0.46	0.61	1.0	1.2	2.6
27	0.70	0.44	0.46	0.61	1.2	1.5	3.1
28	1.42	0.44	0.46	0.61	2.4	3.0	6.4
29	1.03	0.44	0.46	0.61	1.7	2.2	4.6
30	6.55	0.68	0.69	0.73	17.1	20.6	35.2
31	0.66	0.44	0.46	0.61	1.1	1.4	3.0



SCALE: 1" = 60'  
 • = Iron

**BENCHMARK:**  
 CITY OF WICHITA BENCHMARK DISC -  
 SE COR. OF THE INTERSECTION OF TYLER RD. &  
 29TH STREET NORTH.  
 32.30' S. OF E.  
 30.00' E. OF E.  
 55.50' E. OF P.P.  
 9.20' SE. OF P.P.  
 43.20' SE. OF SEC. COR. IRON  
 ELEV. = 178.04 CITY DATUM  
 1385.44 NGVD29



**Notes:**  
 Proposed Top of Foundation Elevations Are Shown on Plans.  
 Contractor to Set Finished Floor Elevations.  
 All Street Elevations Shown on Plans Are for Top of Curb.  
 This Grading Plan is Designed with View-Outs.  
 Elevations Shown at Rear of House (XX.X V.O.)  
 Lot dimensions have been omitted on this plan, refer to the recorded plat for this information.

7/13/04 Revised pad & spot elev. Lots 16-18, Block D AEG  
 6/17/04 Revised V.O. elevs. to W.O. Lots 13-15, Block B AEG  
 2/18/04 Revised pad elevs. Lots 23-27, Block C AEG  
 9/23/03 Revised back lot grades AEG  
 17 June 03 revised house elev by SMO per No:  
 Bk A: Lots 1-6, 11-16  
 Bk B: Lots 1-16, 18-34, 37  
 Bk C: Lots 4-21, 23-27  
 Bk D: Lots 6-10, 12-15, 18-19  
 Bk E: Lots 1-3

**TYLER'S LANDING ADDITION**  
**MASTER GRADING PLAN**  
 CITY OF WICHITA, KANSAS

**BAUGHMAN COMPANY P.A.**  
 ENGINEERING, SURVEYING, & PLANNING  
 316-262-7271 • 315 ELLIS • WICHITA, KANSAS 67211

DESIGN	DRAWN	APPROVED	DATE	SCALE
SCL	SCL	NBW	11/04/02	1"=60'

PROJECT NUMBER: \_\_\_\_\_ SHEET: **2** OF **2**