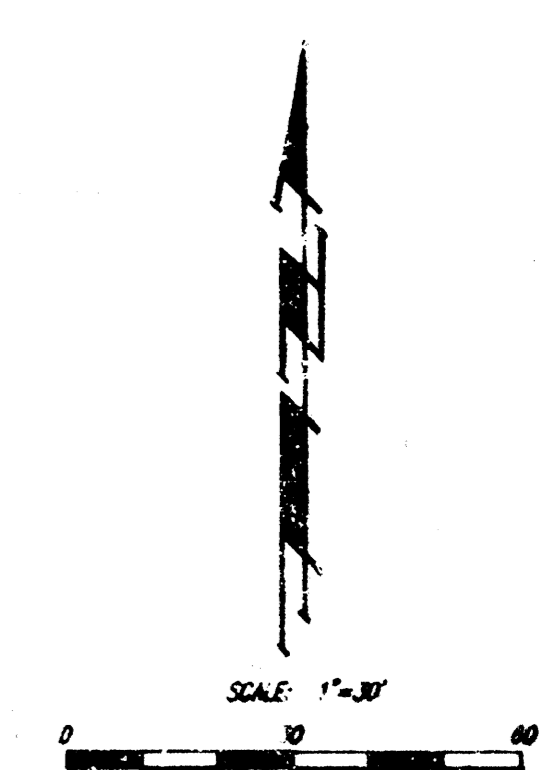
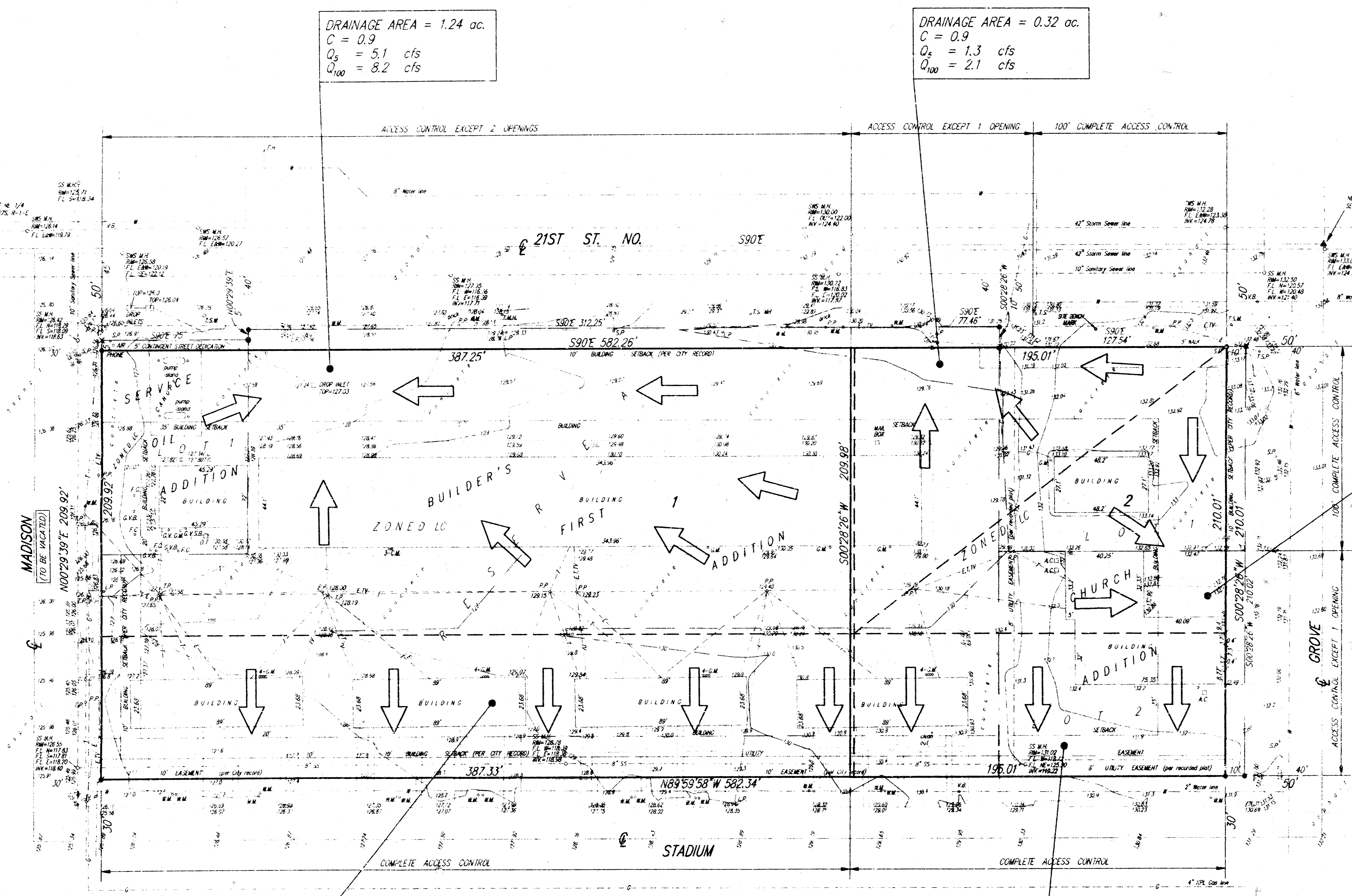


# DRAINAGE CONCEPT

## U.N.B. ADDITION

WICHITA, SEDGWICK COUNTY, KANSAS



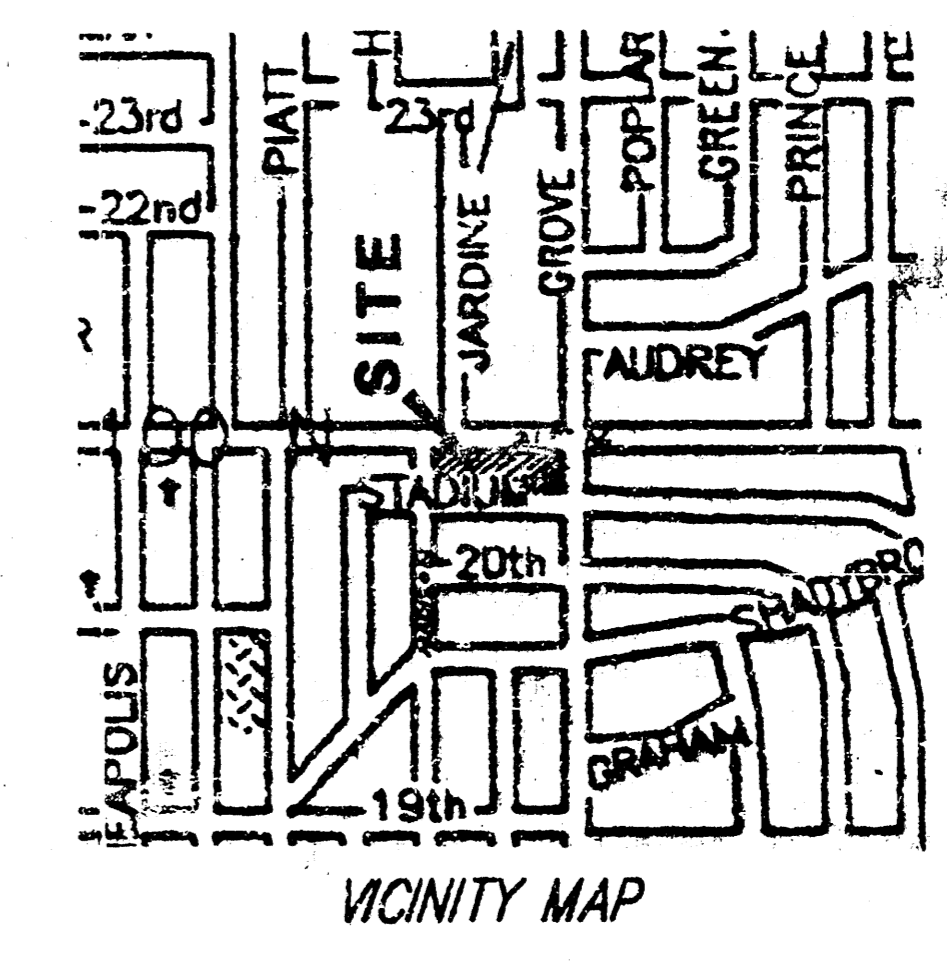
- ▲ = Bench Mark
  - = Open Well
  - ⊙ = PE Well & Storm Set
  - ⊙ = PE (Baugman) Water Set
  - ⊙ = 1/2" Iron Found
- Contour Interval = 1'

### LEGEND

- SS M.H. = Sanitary Sewer Manhole
- SMS M.H. = Storm Sewer Manhole
- M.M. = Meter Manhole
- G.M. = Gas Meter
- T.S.M. = Traffic Signal Manhole
- V.B. = Valve Box
- P.P. = Power Pole
- T.S. = Traffic Signal
- L.P.B. = Light Pole Base
- A.C. = Air Conditioner Unit
- S.P. = Sign Pole
- F.H. = Fire Hydrant
- T.P. = Telephone Pole
- G.V.S.B. = Gas Valve Switch Box
- F.C. = Filter Cap
- G.V. = Gas Valve
- O.T. = Oil Trap
- L.P. = Light Pole
- T.C. = Top of Curb
- F.L. = Floor Line
- M.V. = Invert
- G.V.B. = Gas Valve Box
- T = overhead Telephone lines
- E = overhead Electric lines
- TV = overhead Cable TV lines

NOTE: Baughman Company, P.A. has not researched any title examination of subject property. An abstract of title insurance company would need to be contacted to research and provide to us any easements, rights-of-ways or dedications.

NOTE: The utility locations represented on this survey were compiled by both field observation and information from the various utility companies. If any construction or relocation is planned for this site the various utility companies should be requested to verify their locations in the field prior to final design or construction.



CONTRACT PURCHASER: UNION NATIONAL BANK, INC.  
 150 NORTH MAIN STREET  
 WICHITA, KANSAS 67202

DESCRIPTION: LOTS 1 AND 2, CHURCH ADDITION TO WICHITA, SEDGWICK COUNTY, KANSAS; LOT 1, SERVICE OR ADDITION, WICHITA, SEDGWICK COUNTY, KANSAS; RESPECTIVE "A", BUILDER'S FIRST ADDITION, WICHITA, KANSAS

DATUM BENCHMARK: C.O.M. BRASS DISC 41.08' SOUTH AND 117.26' WEST OF THE CENTERLINES OF 21ST STREET NORTH AND GROVE STREET  
 ELEVATION = 132.20 (CITY DATUM)