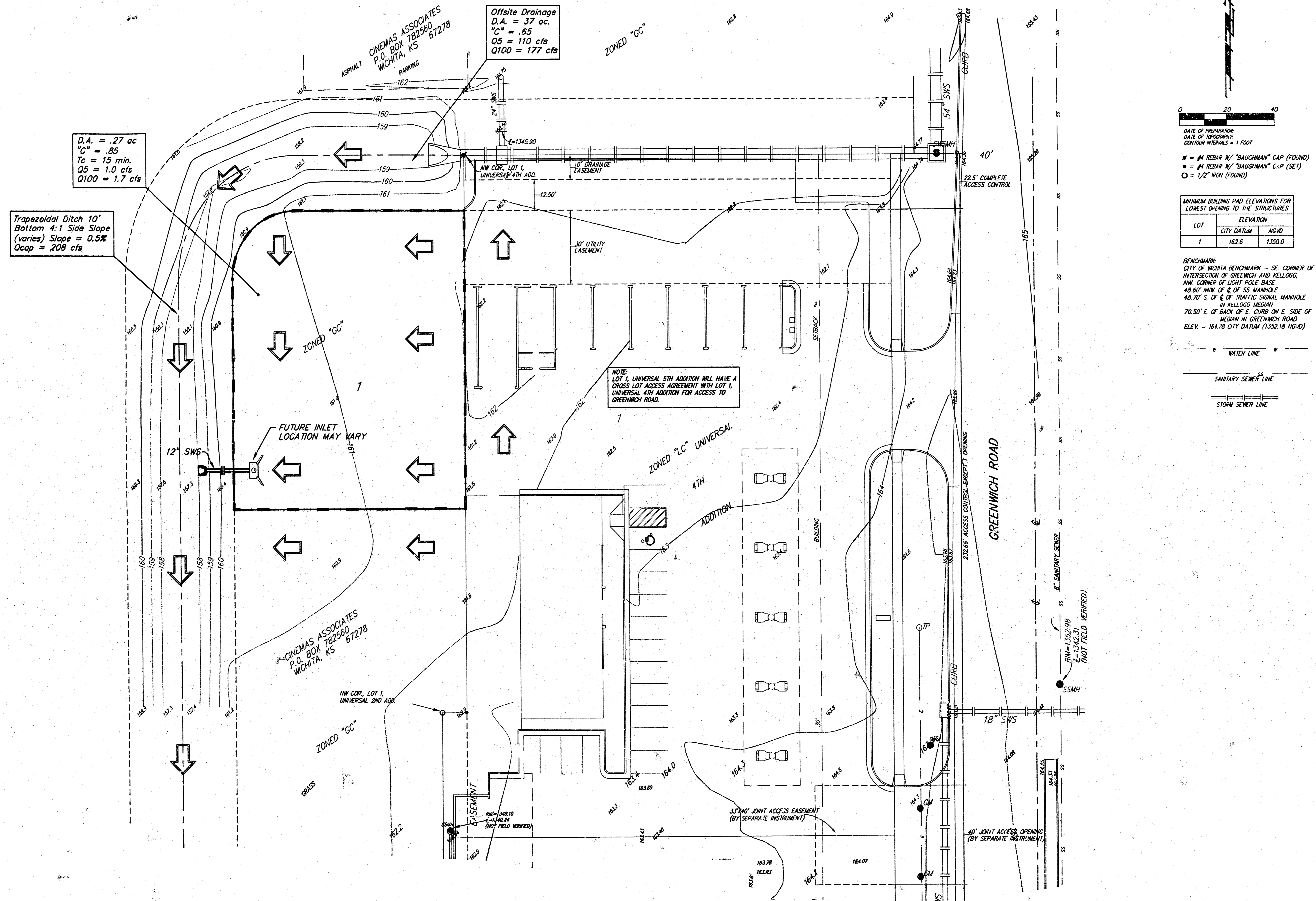


DRAINAGE PLAN UNIVERSAL 5TH ADDITION WICHITA, SEDGWICK COUNTY, KANSAS



0 20 40

DATE OF PREPARATION:
DATE OF TOPOGRAPHY:
CONTOUR INTERVALS = 1 FOOT

■ = #4 REBAR W/ "BAUGHMAN" CAP (FOUND)
● = #4 REBAR W/ "BAUGHMAN" C-P (SET)
○ = 1/2" IRON (FOUND)

MINIMUM BUILDING PAD ELEVATIONS FOR LOWEST OPENING TO THE STRUCTURES

LOT	ELEVATION	
	CITY DATUM	NGVD
1	162.6	1350.0

BENCHMARK:
CITY OF WICHITA BENCHMARK - SE CORNER OF INTERSECTION OF GREENWICH AND KELLOGG, NW CORNER OF LIGHT POLE BASE, 48.60' NWN OF & OF SS MANHOLE 48.70' S. OF & OF TRAFFIC SIGNAL MANHOLE IN KELLOGG MEDIAN, 70.50' E. OF BACK OF E. CURB ON E. SIDE OF MEDIAN IN GREENWICH ROAD, ELEV. = 164.78 CITY DATUM (1352.18 NGVD)

--- WATER LINE
--- SANITARY SEWER LINE
--- STORM SEWER LINE

08 SEPTEMBER 2003