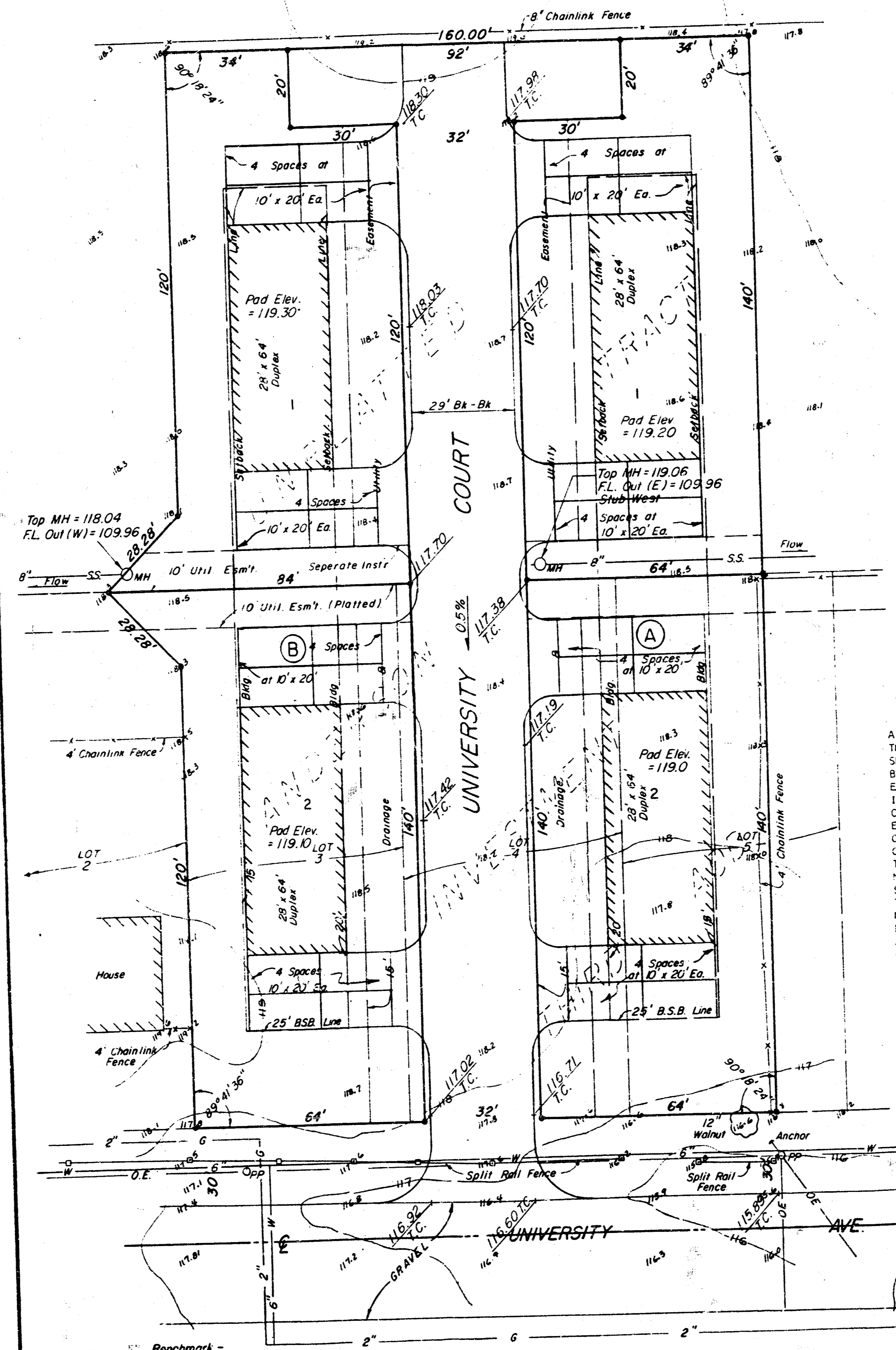
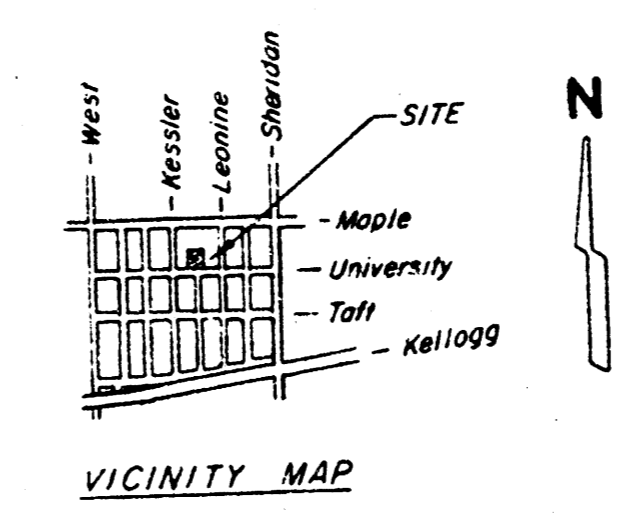
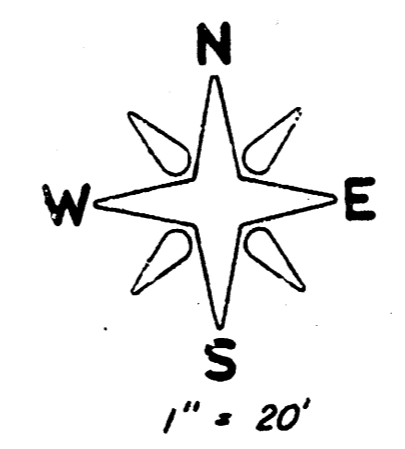


UNIVERSITY COURT
THIRD ADDITION
(Drainage)

PRELIMINARY PLAT
of
UNIVERSITY COURT THIRD ADDITION
To Wichita, Kansas

SITE DEVELOPMENT AND DRAINAGE PLAN



- LEGEND**
- S.S. = Sanitary Sewer
 - W = Water
 - OE = Overhead Electric
 - F.L. = Flow Line
 - Sp. = Spot Elevation
 - P.P. = Power Pole
 - M.H. = Manhole
 - G = Gas

LEGAL DESCRIPTION

A TRACT OF LAND IN THE NORTH 1/2 OF THE NE 1/4 OF THE NW 1/4 OF SEC. 25, T25S, R1W OF THE 6TH P.M., SEDGWICK COUNTY, KANSAS, DESCRIBED AS FOLLOWS: BEGINNING AT A POINT IN THE NORTH LINE AND 40.01' EAST OF THE NORTHWEST CORNER OF LOT 5, ANDERSON INVESTMENT THIRD ADDITION TO WICHITA, SEDGWICK COUNTY, KANSAS; THENCE NORTH PARALLEL WITH THE EAST LINE OF THE NE 1/4 OF SAID NW 1/4, A DISTANCE OF 140.01'; THENCE WEST PARALLEL WITH THE SOUTH LINE OF THE NE 1/4 OF SAID NW 1/4, A DISTANCE OF 160.01'; THENCE SOUTH PARALLEL WITH THE EAST LINE OF THE NE 1/4 OF SAID NW 1/4, A DISTANCE OF 120.01'; THENCE SOUTHWESTERLY AT AN INCLUDED ANGLE OF 135°, A DISTANCE OF 28.28' MORE OR LESS TO THE NORTHWEST CORNER OF LOT 3 IN SAID ANDERSON INVESTMENT THIRD ADDITION; THENCE EAST ALONG THE NORTH LINE OF SAID ADDITION, A DISTANCE OF 180.01' TO THE POINT OF BEGINNING.

AND ALSO LOTS 3, 4 AND THE WEST 40.01' OF LOT 5 IN ANDERSON INVESTMENT THIRD ADDITION TO WICHITA, SEDGWICK COUNTY, KANSAS.

MOEHRING & ASSOCIATES
CONSULTING ENGINEERS
WICHITA
May 21, 1987



Benchmark -
"x" on Top of Curb at West
End Curb Return at SW Cor.
Kessler & Maple. Elev. = 115.34