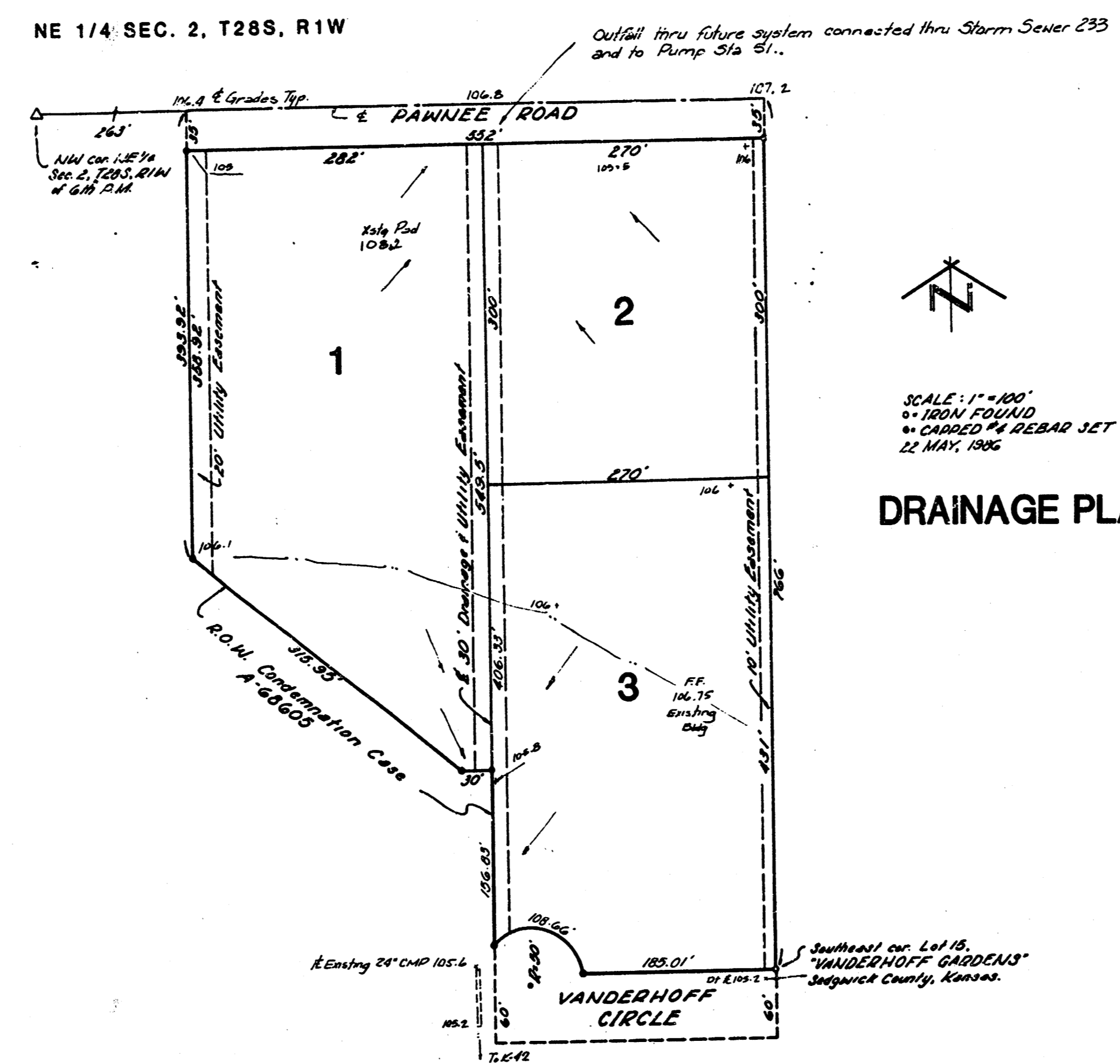


VANDERHOFF GARDENS SECOND ADDITION
(Drainage)

VANDERHOFF GARDENS SECOND ADDITION WICHITA, SEDGWICK COUNTY, KANSAS

NE 1/4 SEC. 2, T28S, R1W

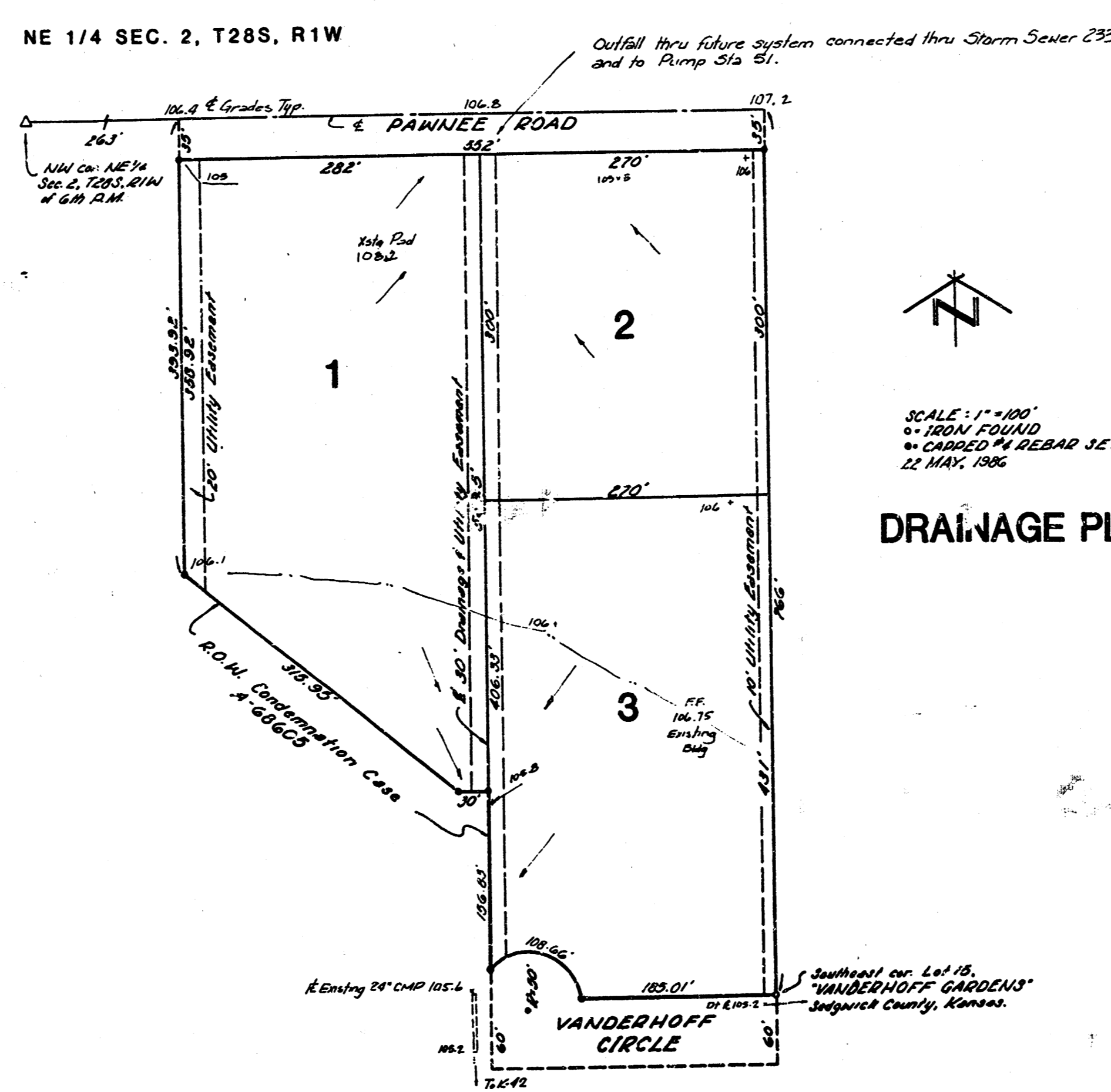


SCALE: 1" = 100'
BY IRON FOUND
CHANGED TO REBAR SET
22 MAY, 1966

DRAINAGE PLAN

VANDERHOFF GARDENS SECOND ADDITION WICHITA, SEDGWICK COUNTY, KANSAS

NE 1/4 SEC. 2, T28S, R1W



SCALE: 1" = 100'
BY IRON FOUND
CHANGED TO REBAR SET
22 MAY, 1966

DRAINAGE PLAN