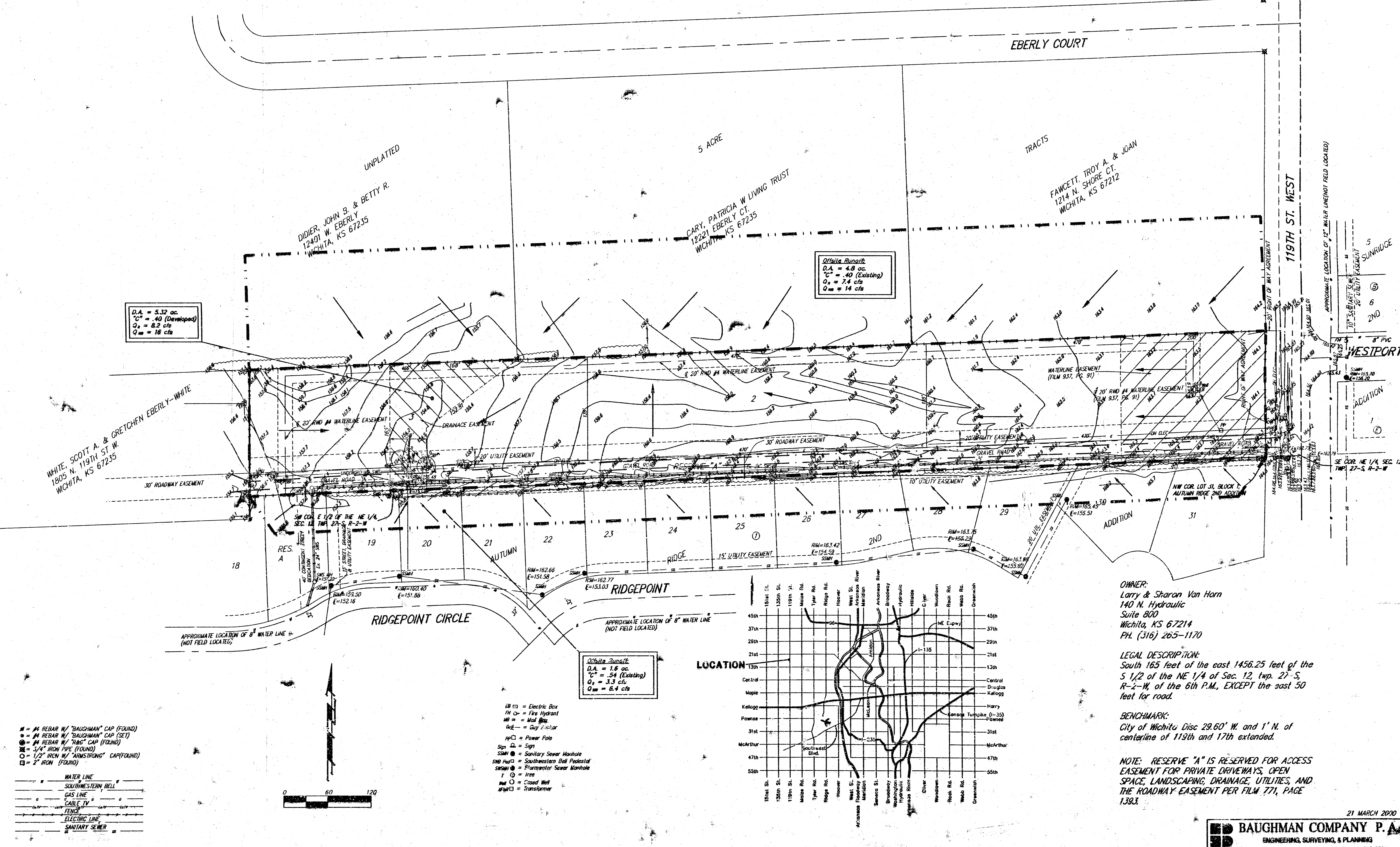


DRAINAGE PLAN

VAN HORN ADDITION

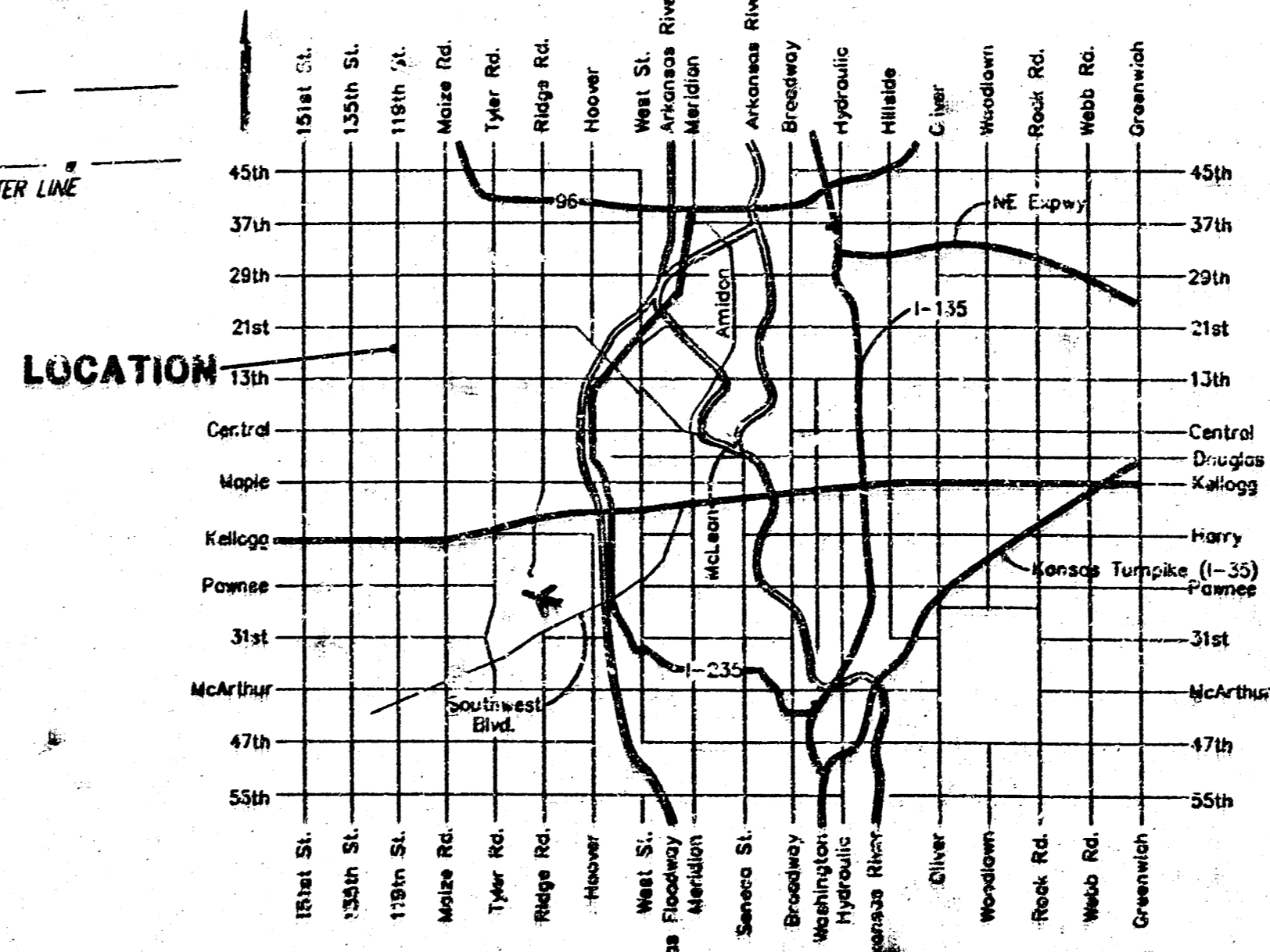
WICHITA, SEDGWICK COUNTY, KANSAS



D.A. = 5.32 ac
C₁ = .40 (Developed)
Q₁ = 8.2 cfs
Q₂ = 16 cfs

Orville Sumak
D.A. = 4.8 ac
C₁ = .40 (Existing)
Q₁ = 7.4 cfs
Q₂ = 14 cfs

Orville Sumak
D.A. = 1.6 ac
C₁ = .34 (Existing)
Q₁ = 3.3 cfs
Q₂ = 6.4 cfs



OWNER:
Larry & Sharon Van Horn
140 N. Hydraulic
Suite 800
Wichita, KS 67214
PH. (316) 265-1170

LEGAL DESCRIPTION:
South 165 feet of the east 1456.25 feet of the S 1/2 of the NE 1/4 of Sec. 12, Twp. 27-S, R-2-W, of the 6th P.M., EXCEPT the east 50 feet for road.

BENCHMARK:
City of Wichita Disc 29.60' W. and 1' N. of centerline of 119th and 17th extended.

NOTE: RESERVE "A" IS RESERVED FOR ACCESS EASEMENT FOR PRIVATE DRIVEWAYS, OPEN SPACE, LANDSCAPING, DRAINAGE, UTILITIES, AND THE ROADWAY EASEMENT PER FILM 771, PAGE 1393.