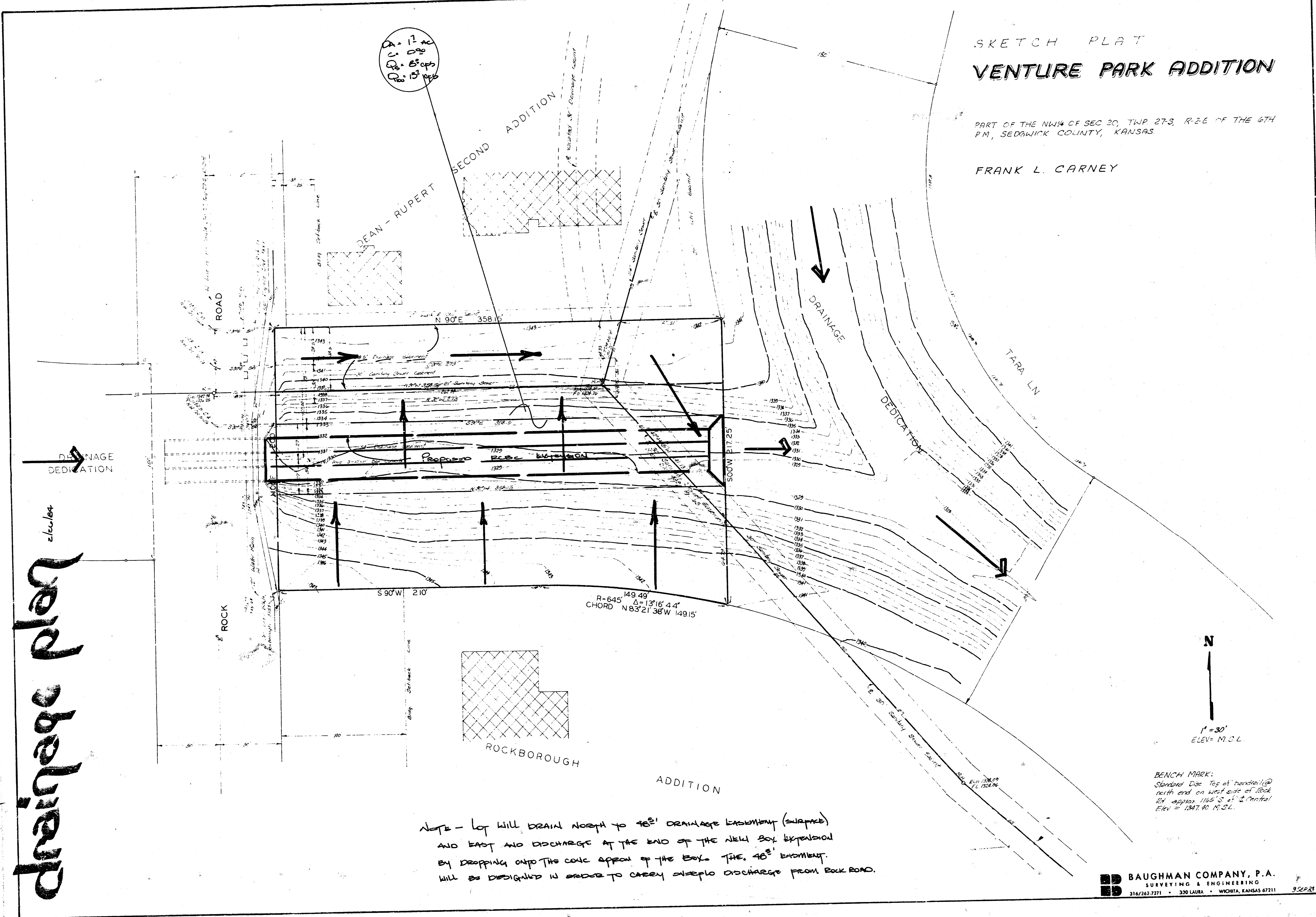


VENTURE PARK ADDITION  
(Drainage)

# SKETCH PLAT VENTURE PARK ADDITION

PART OF THE NW¼ OF SEC 20, TWP 27-S, R-26 E OF THE 6TH  
P.M., SEDGWICK COUNTY, KANSAS

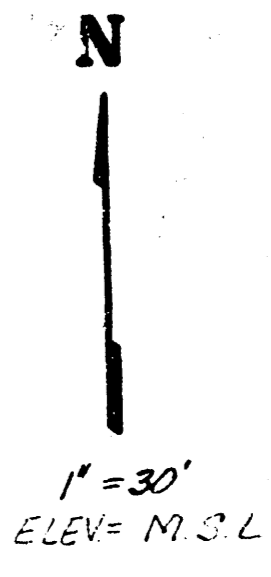
FRANK L. CARNEY



$A = 12$  ac  
 $C = 0.90$   
 $D_1 = 65$  ft  
 $D_2 = 15$  ft

drainage plan  
 z/col/est

NOTE - Lot will drain north to 46" drainage easement (surface)  
 and east and discharge at the end of the new box expansion  
 by dropping onto the conc. apron of the box. The 46" easement  
 will be designed in order to carry overflow discharge from Rock Road.



1" = 30'  
ELEV. M.C.L.

BENCH MARK:  
 Standard Disc Top of transect @  
 north end on west side of Rock  
 Rd. approx 1165' S of 2' Central  
 Elev = 1247.40 M.C.L.