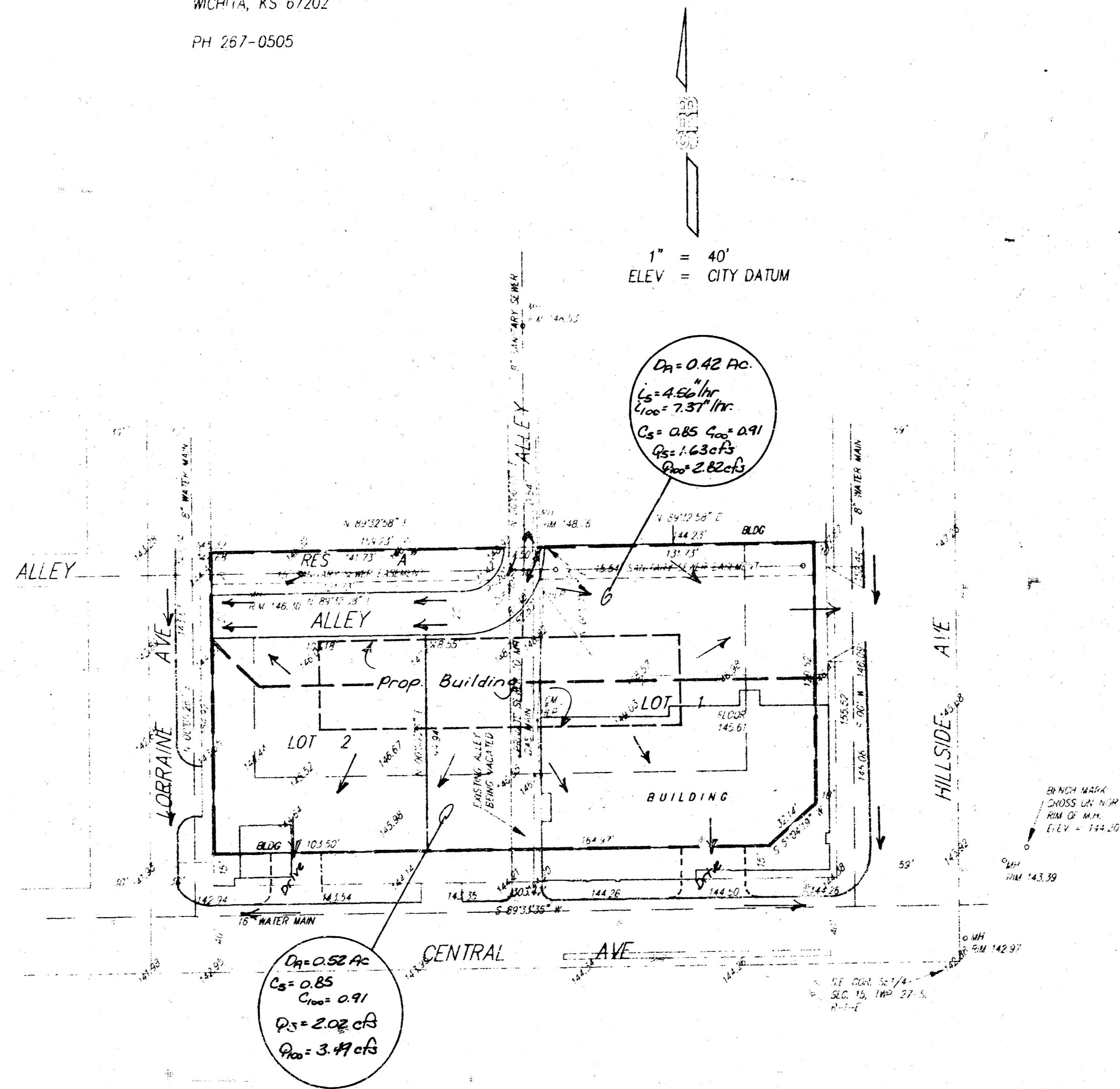


SKETCH PLAT VENTURE THREE ADDITION

WICHITA, SEDGWICK COUNTY, KANSAS

LOTS 1, 2, 3, 4, 5, AND 6, HODSON'S SECOND ADDITION TO WICHITA, SEDGWICK COUNTY, KANSAS, TOGETHER WITH ALL OF THE 15 FOOT ALLEY ADJACENT TO SAID LOTS, AND THE SOUTH 0.54 FEET OF LOT 10 ON HILLSIDE AVENUE, SCHUCKMAN'S ADDITION TO WICHITA, SEDGWICK COUNTY, KANSAS.

VENTURE THREE, L.P.
 % DAVID BURK
 835 E. 1ST ST
 WICHITA, KS 67202
 PH 267-0505



DRAINAGE PLAN 8/30/03
SRB
 341 SOUTH HILLSIDE
 WICHITA, KANSAS 67211
 316-652-7754
 FAX 652-7572
SAVOY, RUGGLES & BOHM, P. A.
 ENGINEERING & SURVEYING

27 AUG 93