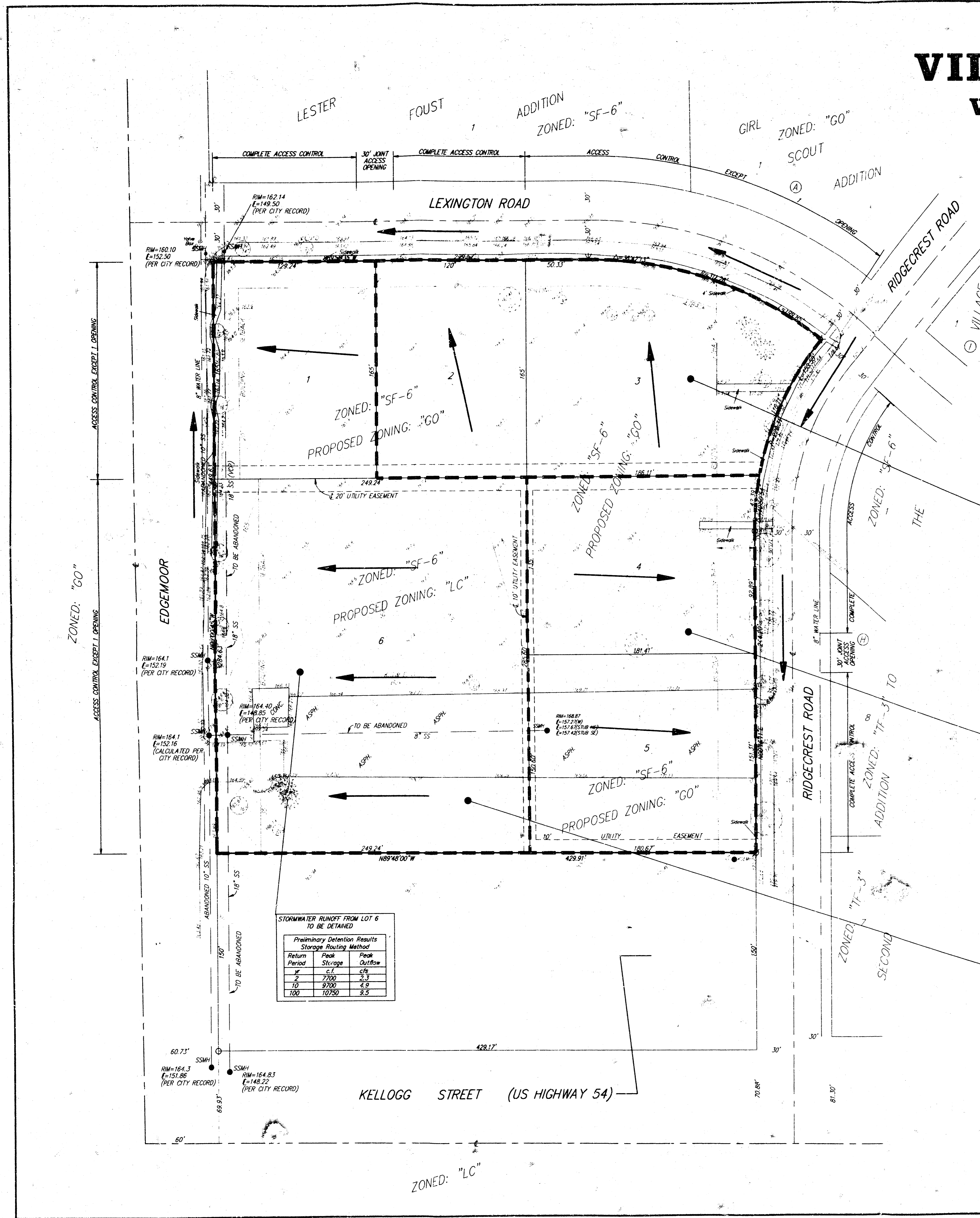


DRAINAGE PLAN

VILLAGE SQUARE ADDITION

WICHITA, SEDGWICK COUNTY, KANSAS



AREA = 1.2 ACRES

EXISTING CONDITIONS	DEVELOPED CONDITIONS
C _s = 0.35	C _s = 0.90
I ₂ = 3.83	I ₂ = 3.33
I ₅ = 4.56	I ₅ = 4.56
I ₁₀ = 5.22	I ₁₀ = 5.22
I ₂₀ = 7.36	I ₂₀ = 7.36
Q ₁ = 1.6 cfs	Q ₁ = 4.1 cfs
Q ₂ = 1.9 cfs	Q ₂ = 4.9 cfs
Q ₃ = 2.2 cfs	Q ₃ = 5.6 cfs
Q ₄ = 3.1 cfs	Q ₄ = 7.9 cfs

AREA = 1.2 ACRES

EXISTING CONDITIONS	DEVELOPED CONDITIONS
C _s = 0.35	C _s = 0.90
I ₂ = 3.83	I ₂ = 3.83
I ₅ = 4.56	I ₅ = 4.56
I ₁₀ = 5.22	I ₁₀ = 5.22
I ₂₀ = 7.36	I ₂₀ = 7.36
Q ₁ = 1.6 cfs	Q ₁ = 4.1 cfs
Q ₂ = 1.9 cfs	Q ₂ = 4.9 cfs
Q ₃ = 2.2 cfs	Q ₃ = 5.6 cfs
Q ₄ = 3.1 cfs	Q ₄ = 7.9 cfs

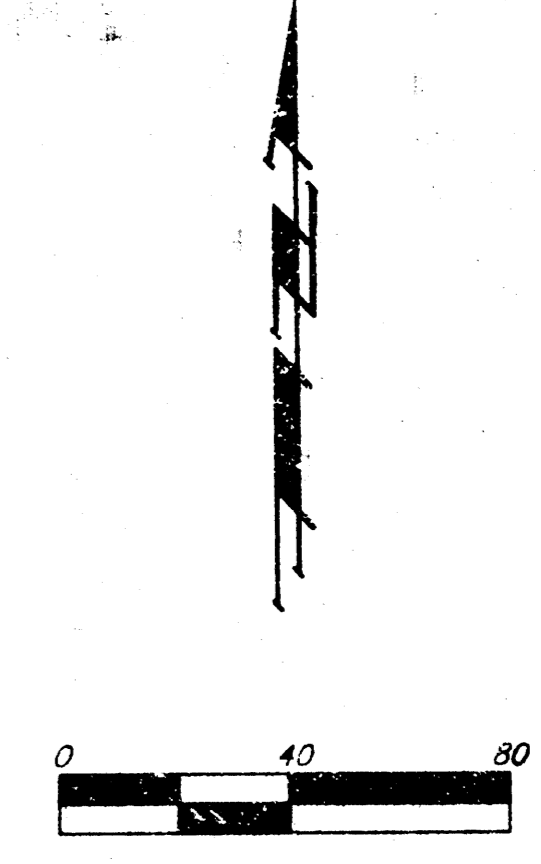
AREA = 2.1 ACRES

EXISTING CONDITIONS	DEVELOPED CONDITIONS
C _s = 0.35	C _s = 0.90
I ₂ = 3.83	I ₂ = 3.83
I ₅ = 4.56	I ₅ = 4.56
I ₁₀ = 5.22	I ₁₀ = 5.22
I ₂₀ = 7.36	I ₂₀ = 7.36
Q ₁ = 2.8 cfs	Q ₁ = 7.2 cfs
Q ₂ = 3.4 cfs	Q ₂ = 8.6 cfs
Q ₃ = 3.8 cfs	Q ₃ = 9.9 cfs
Q ₄ = 5.4 cfs	Q ₄ = 13.9 cfs

STORMWATER RUNOFF FROM LOT 6 TO BE DETAINED

Preliminary Detention Results
Storage Routing Method

Return Period	Peak Storage	Peak Outflow
2	7700	2.3
10	9700	4.9
100	10700	8.5

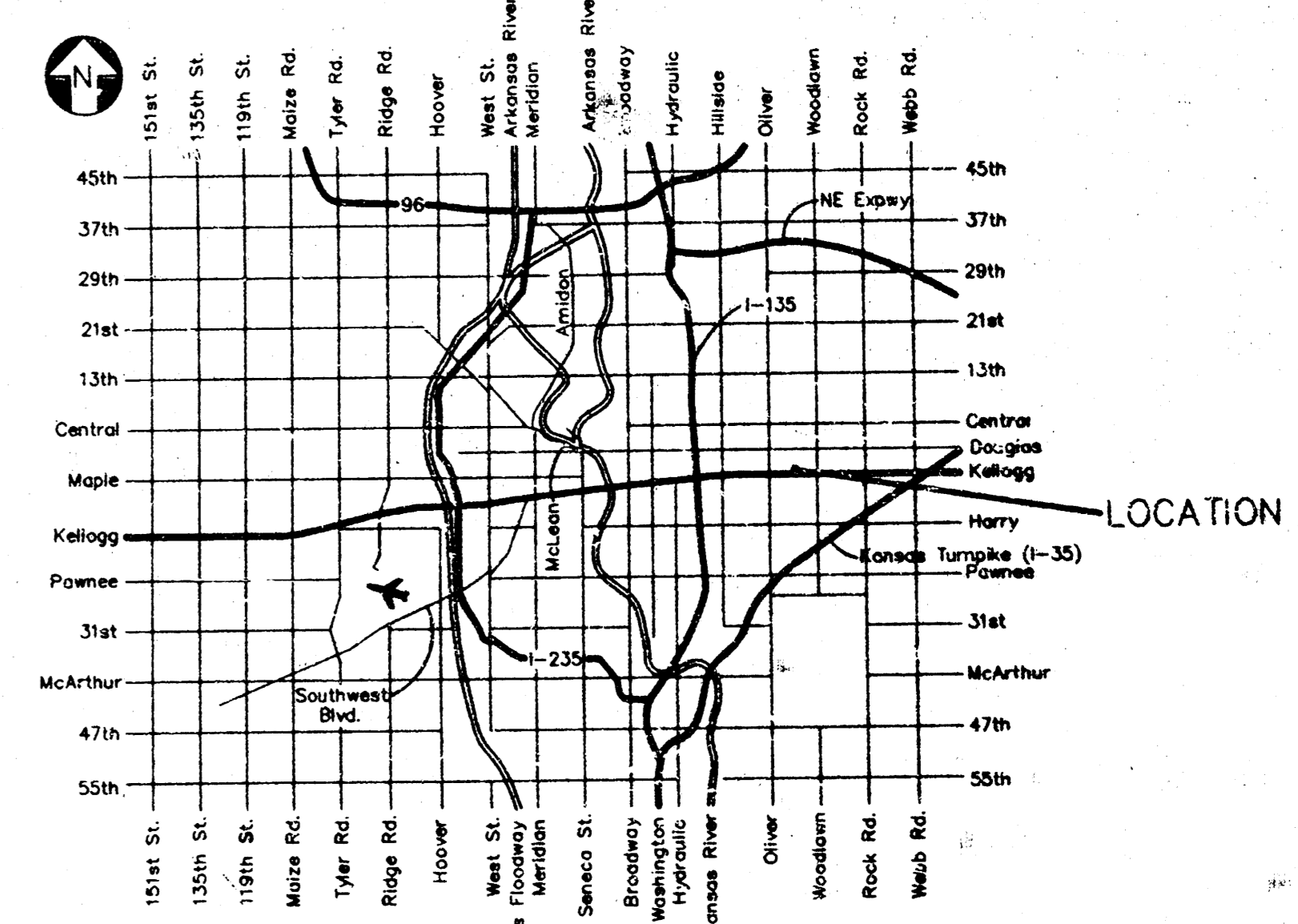


- LEGEND**
- FH = FIRE HYDRANT
 - ANCHOR
 - LP = LIGHT POLE
 - P = PINE TREE
 - PP = POWER POLE
 - SSMH = SANITARY SEWER MANHOLE
 - SSMH = SOUTHWESTERN BELL PEDESTAL
 - T = TREE
 - KGMH = K, G & E MANHOLE
 - = #4 REBAR W/ "BAUGHMAN" CAP (FOUND)
 - = 1/2" PEC IRON (FOUND)
 - = CROSS FOUND
 - = 3/4" IRON (FOUND)

LEGAL DESCRIPTION
RESERVE "D", BLOCK G, SECOND ADDITION TO THE VILLAGE, AN ADDITION TO WICHITA, SEDGWICK COUNTY, KANSAS, EXCEPT THE SOUTH 150 FEET THEREOF.

OWNER
THE LUTHERAN CHURCH - MISSOURI SYNOD
417th ELMER KARSTENSEN
2318 SW 10TH STREET
TOPEKA, KANSAS 66604-3927

BENCHMARK
SQUARE CUT TOP OF CURB IN THE MIDDLE OF SE CURB
RETURN AT EDGEWOOD AND LEXINGTON, FIVE FEET, MORE OR LESS, EAST OF BACK OF WALK SOUTH.



VICINITY MAP