

Voges VW

Dt. 08/20/40
Pl. 18/40
Pl. 28/40

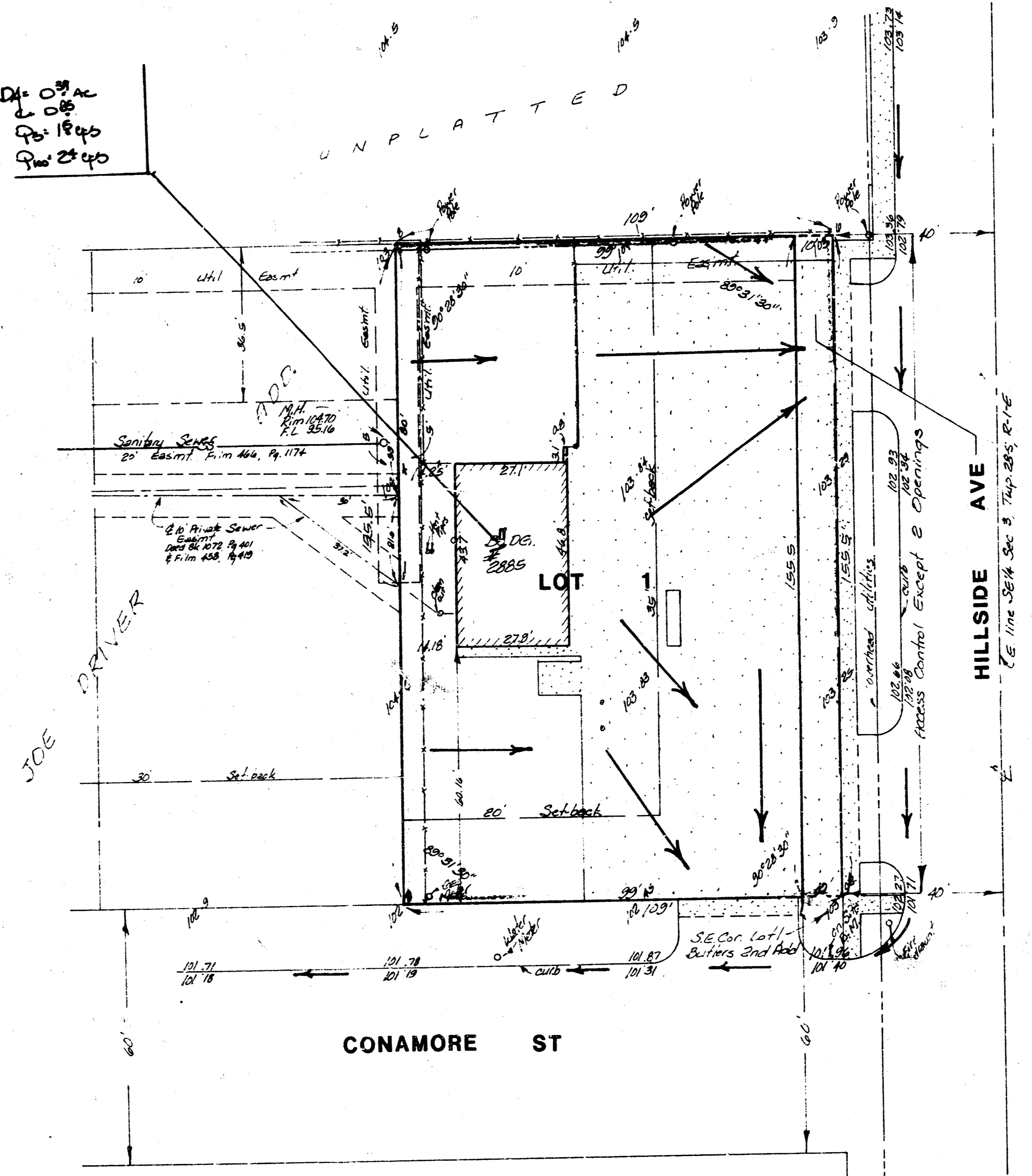
UNPLATTED



1" = 20'
ELEV. = CITY DATUM

BENCH MARK:
City Standard Disc. on N.E. Cor.
of R.C.B. at Hillside & Conamore
Elev. = 104.428 City Datum

On Site B.M.
"B" square cut on top of curb on
N. side of Conamore St. at N.W. Cor.
of Hillside & Conamore
Elev. = 101.36 City Datum



SKETCH PLAT
VOGES VW ADDITION

LOTS 1 AND 2, EXCEPT THE WEST 150 FEET THEREOF,
BUTLERS 2ND ADDITION, SEDGWICK COUNTY, KANSAS

CHARLES L VOGES

DRAINAGE PLAN

BAUGHMAN COMPANY, P.A.
SURVEYING & ENGINEERING
315262-7271 • 315 ELLIS • WICHITA, KANSAS 67211

8 SEP 388