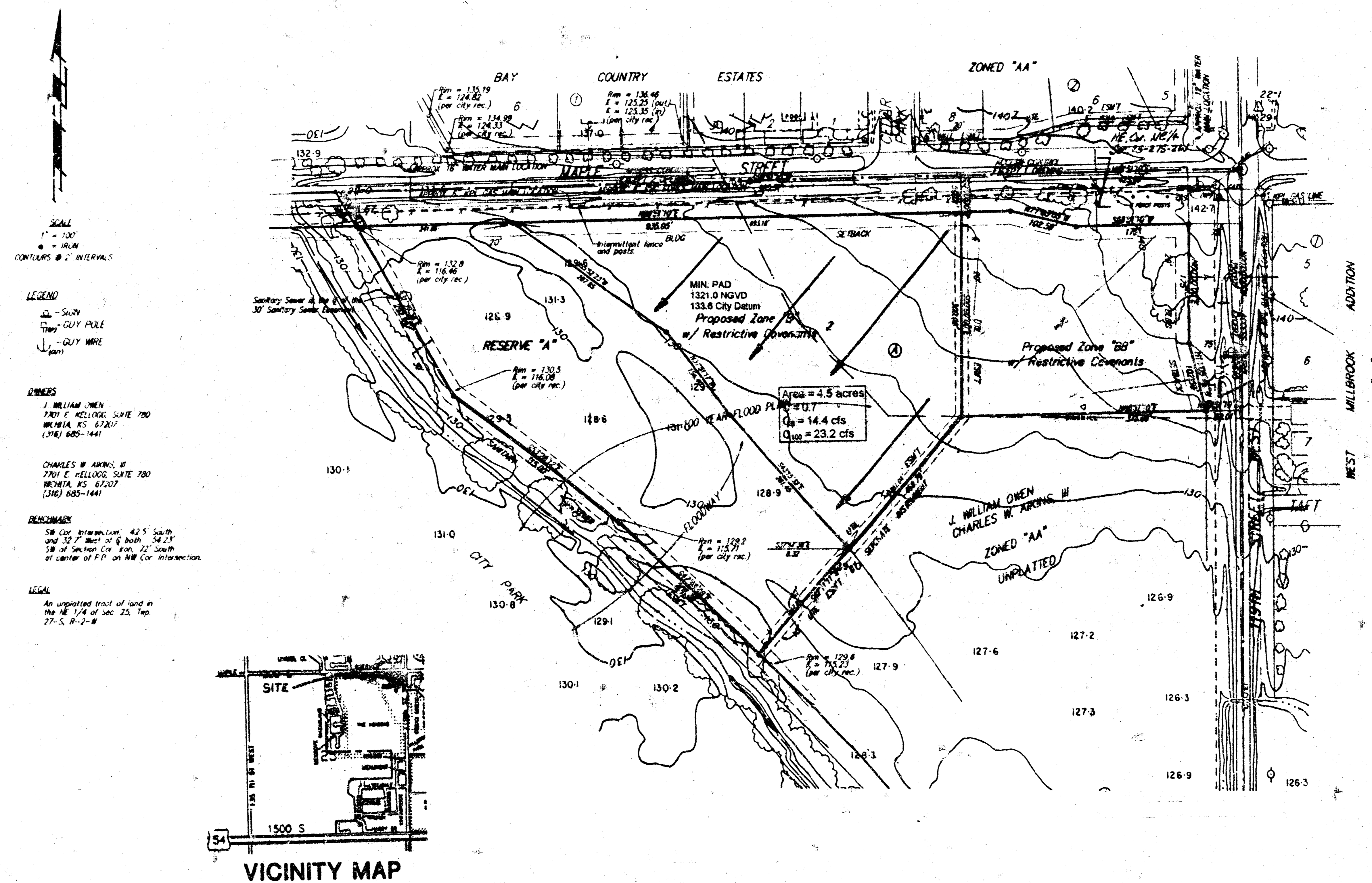


# PRELIMINARY PLAT VYNE ADDITION WICHITA, SEDGWICK COUNTY, KANSAS

## DRAINAGE PLAN



**SCALE**  
1" = 100'  
• = 100M  
CONTOURS @ 2' INTERVALS

**LEGEND**  
--- SWAY  
--- GUY POLE  
--- GUY WIRE

**OWNERS**  
J. WILLIAM OWEN  
7201 E. HELLOGG, SUITE 700  
WICHITA, KS 67217  
(316) 685-1441

CHARLES W. ARKINS, III  
7701 E. HELLOGG, SUITE 700  
WICHITA, KS 67207  
(316) 685-1441

**BENCHMARKS**  
SW Cor. Intersection, 42.5' South  
and 52.7' West of 8' Bench, 54.21'  
SW of Section Cor. 40n, 27' South  
of center of P.P. on NW Cor. Intersection

**LEGAL**  
An unpatented tract of land in  
the NE 1/4 of Sec. 25, Twp.  
27-S, R-12-W

21 AUG 1996  
30 AUG 1996  
29 AUGUST 1996