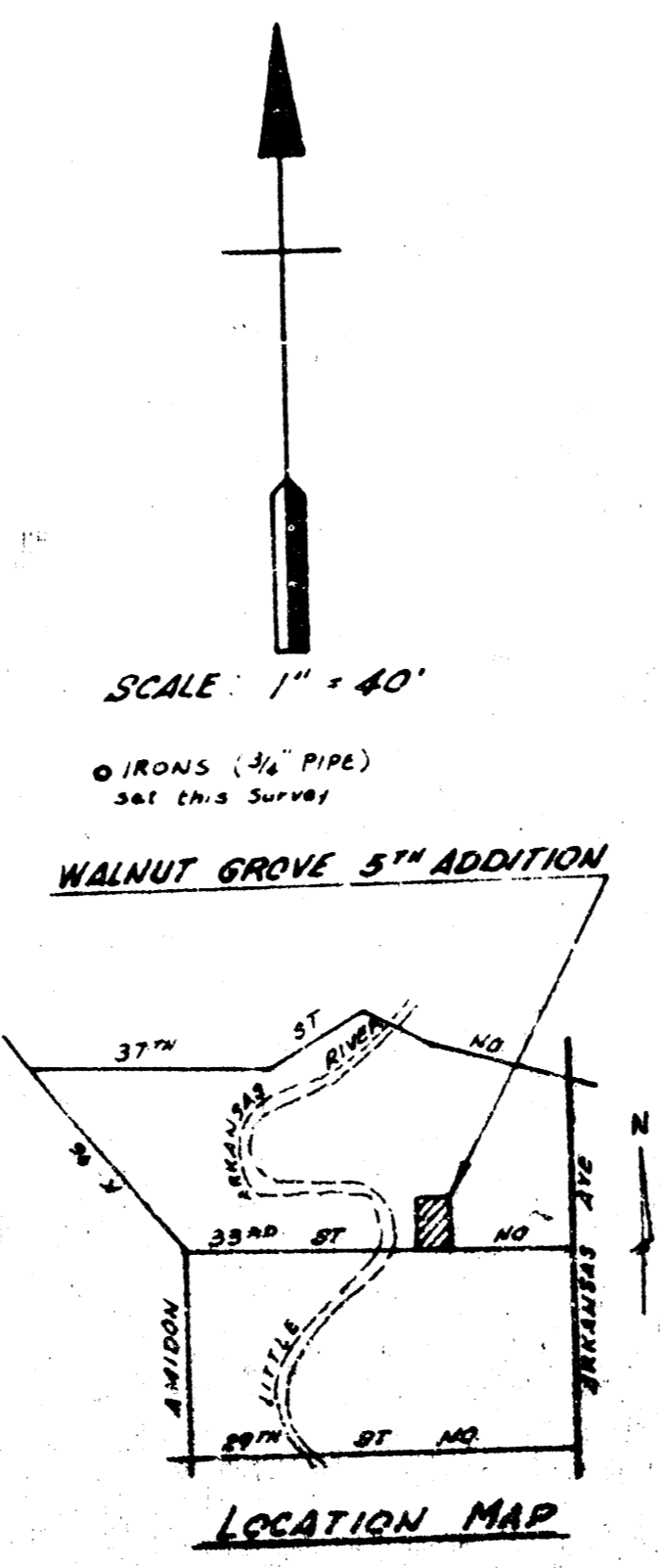
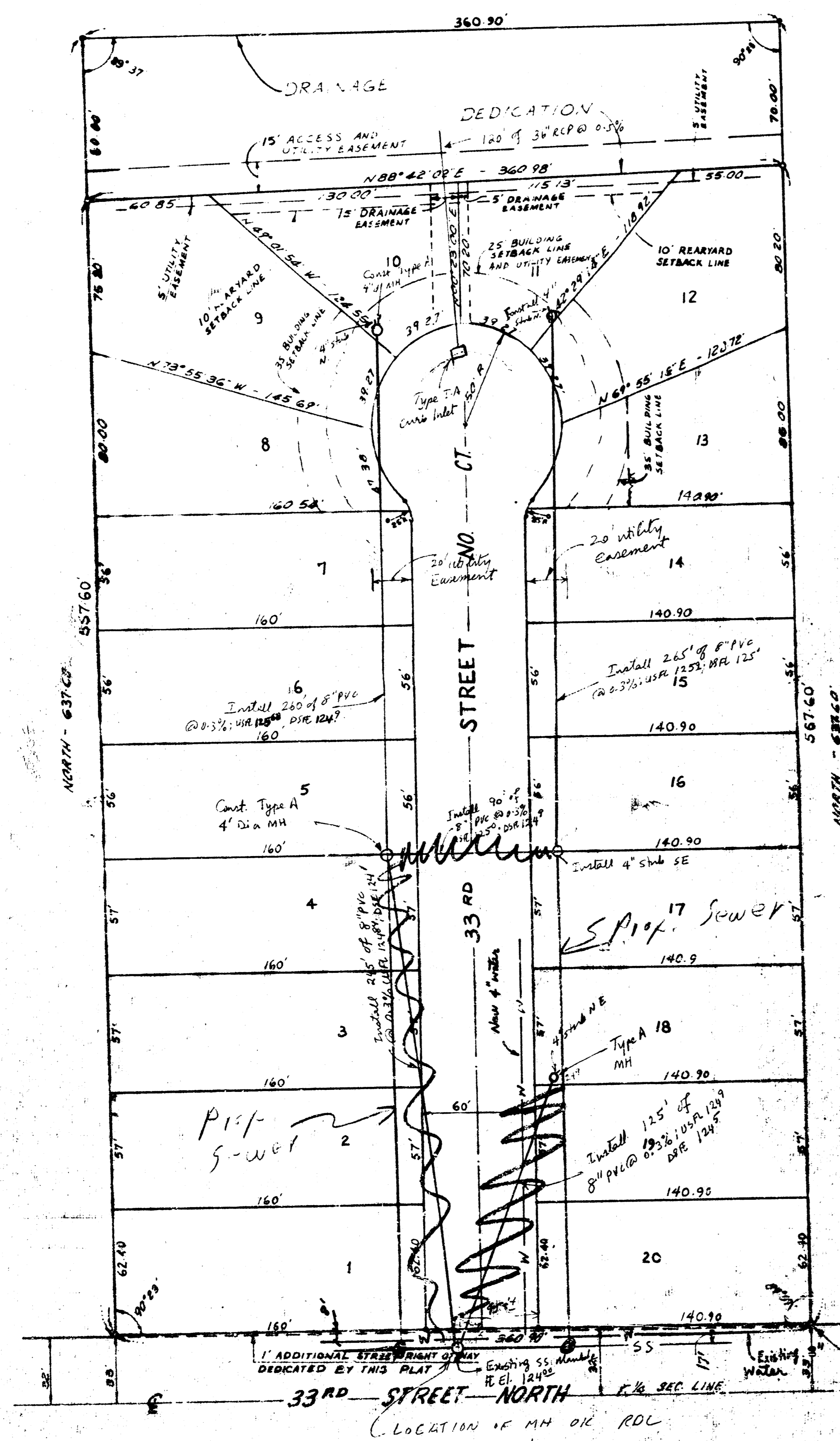


WALNUT GROVE FIFTH ADDITION

WICHITA, KANSAS



NOTE: THE MINIMUM BUILDING PAD ELEVATION OF ALL LOTS IN BLOCK B SHALL BE 1312.0 MEAN SEA LEVEL (1928 CITY DATUM).

WALNUT GROVE 5TH ADDITION
(DRAINAGE)

THIS PLAT OF "WALNUT GROVE FIFTH ADDITION" IN THE CITY OF WICHITA, KANSAS, HAS BEEN SUBMITTED TO AND APPROVED BY THE SEDGWICK COUNTY METROPOLITAN AREA PLANNING COMMISSION, WICHITA, KANSAS, DATE _____.

WICHITA -- SEDGWICK COUNTY METROPOLITAN AREA PLANNING COMMISSION

THIS PLAT IS APPROVED AND ALL OPERATIONS HEREIN SHALL BE ACCEPTED BY THE BOARD OF COMMISSIONERS OF THE CITY OF WICHITA, KANSAS, THIS _____ DAY OF _____, 19__.

_____ MAYOR
 _____ CLERK

THIS PLAT IS APPROVED AND ALL OPERATIONS HEREIN SHALL BE ACCEPTED BY THE BOARD OF COMMISSIONERS OF SEDGWICK COUNTY, KANSAS, THIS _____ DAY OF _____, 19__.

_____ COUNTY CLERK
 _____ COUNTY CLERK

STATE OF KANSAS)
 SEDGWICK COUNTY) WE, FIRSIDE ENGINEERING COMPANY, REGISTERED ENGINEERS IN AFORESAID COUNTY AND STATE OF KANSAS, CERTIFY THAT WE HAVE SURVEYED AND PLATTED "WALNUT GROVE FIFTH ADDITION", WICHITA, KANSAS, AND THAT THE ACCOMPANYING PLAT IS A TRUE AND CORRECT EXHIBIT OF THE PROPERTY SURVEYED, LEGALLY DESCRIBED AS AND BEING A REPLAT OF THE EAST 1/4 SECTION 34.9 FEET OF THAT PART OF LOT 21 LYING SOUTH OF LOT 16 EXCEPT ROAD, WALNUT GROVE, SEDGWICK COUNTY, KANSAS; MORE FULLY DESCRIBED AS:
 STARTING AT A POINT THIRTY TWO (32.0) FEET NORTH AND ONE THOUSAND THREE HUNDRED AND TWENTY-FOUR AND FORTY-FOUR HUNDREDTHS (1324.44) FEET WEST OF THE CENTER POINT OF SECTION 32, TOWNSHIP 34 SOUTH, AND RANGE 1 EAST OF THE SIXTH PRINCIPAL MERIDIAN, WICHITA, SEDGWICK COUNTY, KANSAS; THENCE NORTH A DISTANCE OF SIX HUNDRED AND THIRTY SEVEN AND SEVEN TENTHS (637.41) FEET AT AN ANGLE OF 89° 17' TO THE HALF SECTION LINE OF THE SAID SECTION 32; THENCE WEST A DISTANCE OF THREE HUNDRED AND SIXTY AND NINE TENTHS (360.9) FEET ALONG A LINE PARALLEL TO THE SAID HALF SECTION LINE; THENCE SOUTH AT AN ANGLE OF 89° 17' A DISTANCE OF SIX HUNDRED AND THIRTY SEVEN AND SIX-TENTHS (637.6) FEET; THENCE EAST A DISTANCE OF THREE HUNDRED AND SIXTY AND NINE TENTHS (360.9) FEET ALONG A LINE PARALLEL TO AND THIRTY TWO (32.0) FEET NORTH OF THE SAID HALF SECTION LINE, TO THE POINT OF BEGINNING.

DATE _____
 FIRSIDE ENGINEERING COMPANY, WICHITA, KANSAS
 REGISTERED ENGINEER V. 2017

KNOW ALL MEN BY THESE PRESENTS THAT WE, THE UNDERSIGNED, HAVE CAUSED THE LAND DESCRIBED IN THE SURVEY TO BE PLATTED AND TO BE PLATTED INTO LOTS, BLOCKS, STREETS AND A DRAINAGE DEDICATION TO BE KNOWN AS "WALNUT GROVE FIFTH ADDITION", WICHITA, KANSAS. THE EASEMENTS ARE HEREBY GRANTED AS INDICATED FOR THE CONSTRUCTION AND MAINTENANCE OF ALL PUBLIC UTILITIES AND DRAINAGE INCLUDING STORM SEWER. THE STREETS ARE HEREBY DEDICATED TO AND FOR THE USE OF THE PUBLIC. THE DRAINAGE DEDICATION IS HEREBY DEMONSTRATED FOR THE CONSTRUCTION AND MAINTENANCE OF A CHANNEL OR CONVEYANCE OF MAJOR STORM RUNOFF. THE FIFTEEN (15.0) FEET "ACCESS EASEMENT" IS HEREBY GRANTED FOR ACCESS NEEDED FOR MAINTENANCE OF THE DRAINAGE CHANNEL AND FENCES OR OTHER PERMANENT STRUCTURES ARE PERMITTED IN THIS EASEMENT.

GERALD SEIBEL
 NICOLAS G. SANDOVAL
 YASH D. DESAI
 BHANU Y. DESAI

STATE OF KANSAS)
 SEDGWICK COUNTY) BE IT REMEMBERED THAT ON THIS _____ DAY OF _____, 19__ BEFORE ME THE UNDERSIGNED, A NOTARY PUBLIC IN AND FOR THE COUNTY AND STATE AFORESAID, CAME YASH D. DESAI AND BHANU Y. DESAI, BHANU AND WENI AND GERALD SEIBEL, AND NICOLAS G. SANDOVAL, WHO ARE PERSONALLY KNOWN TO ME TO BE THE SAME PERSONS WHO EXECUTED THE WITHIN INSTRUMENT OF WRITING AND SUCH PERSONS DULY ACKNOWLEDGED THE EXECUTION OF THE SAME.

IN TESTIMONY WHEREOF, I HAVE HERETO SET MY HAND AND AFFIXED MY OFFICIAL SEAL THE DAY AND YEAR ABOVE WRITTEN.
 MY COMMISSION EXPIRES _____
 ENTERED ON TRANSFER RECORD THIS _____ DAY OF _____, 19__
 DOROTHY K. WHITE COUNTY CLERK

STATE OF KANSAS)
 SEDGWICK COUNTY) THIS IS TO CERTIFY THAT THIS PLAT HAS BEEN FILED FOR RECORD IN THE OFFICE OF THE REGISTER OF DEEDS THIS _____ DAY OF _____, 19__ AT _____ O'CLOCK, _____ M., AND IS DULY RECORDED.
 BETTE F. MCCARTY REGISTER OF DEEDS
 TAJ KETTLER DEPUTY