

GENERAL NOTES

OWNER: JOHN WEITZEL, INC.  
3310 W. CENTRAL  
WICHITA, KS 67203

LEGAL DESCRIPTION: JOHN WEITZEL ADDITION, LOT 25 DAVIS GARDENS ADDITION AND ALLEY ADJACENT TO BOTH

BENCHMARK: CITY OF WICHITA DISK, 30' S. AND 42' W. OF CENTER LINE OF SHERIDAN & CENTRAL  
ELEV. 121.66

DATE OF TOPOGRAPHIC SURVEY: 2-7-92

EXISTING ZONING: JOHN WEITZEL ADDITION: LIGHT INDUSTRIAL ("E")  
LOT 25, DAVIS GARDENS ADDITION: A-A, TO BECOME "E" SUBJECT TO PLATTING

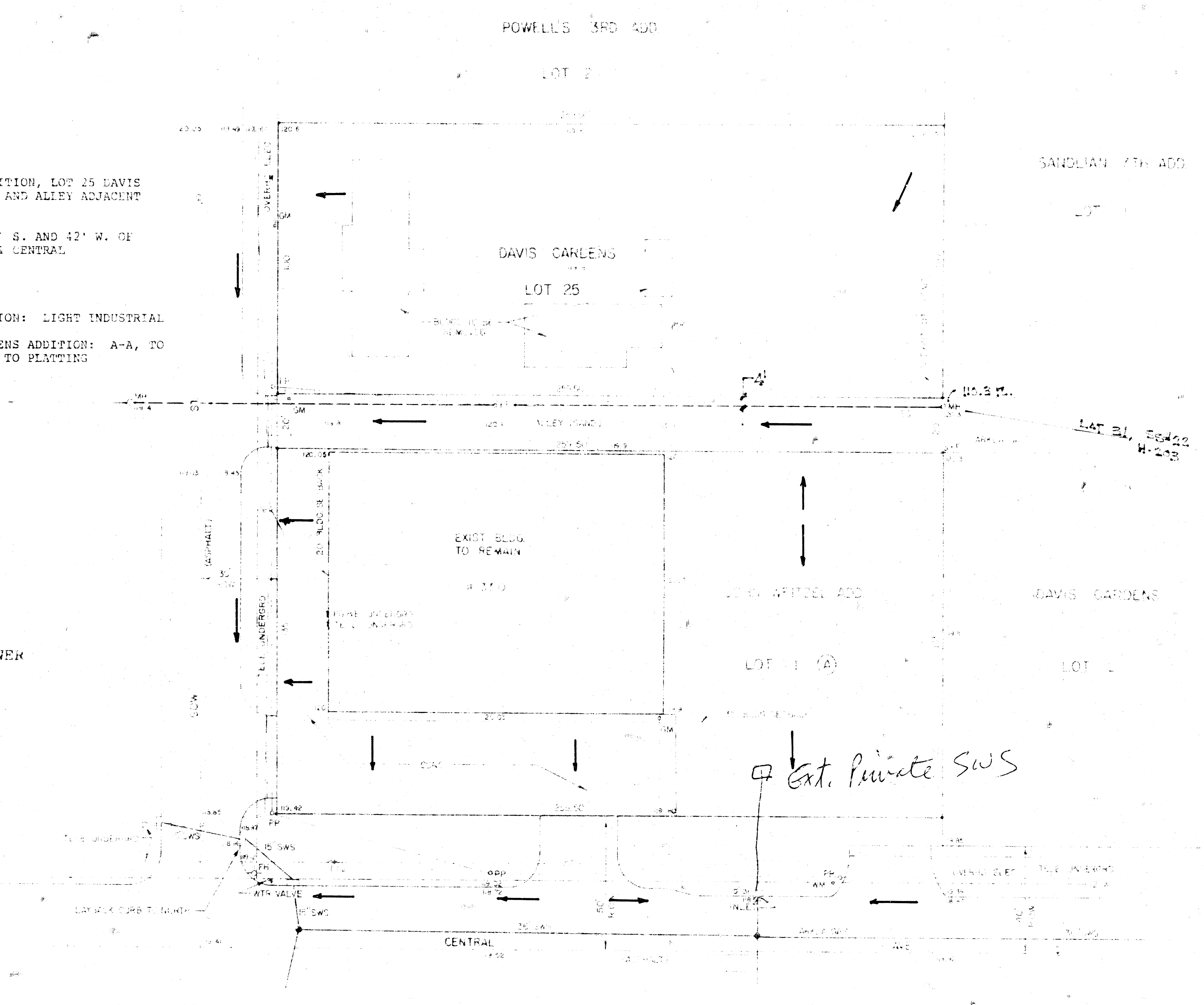
LEGEND

- SS = SANITARY SEWER
- SWS = STORM WATER SEWER
- PP = POWER POLE
- FH = FIRE HYDRANT
- WM = WATER METER
- GM = GAS METER
- W = WATER MAIN

Drainage Notes:

→ = Direction of Drainage

All future improvements shall Direct drainage to the Public Storm Sewer System in Central Ave, or onto Gow.



Drainage Plan  
**VICINITY / SURVEY MAP**  
**JOHN WEITZEL 2ND ADDITION**

WICHITA, SEDGWICK CO., KANSAS

1992