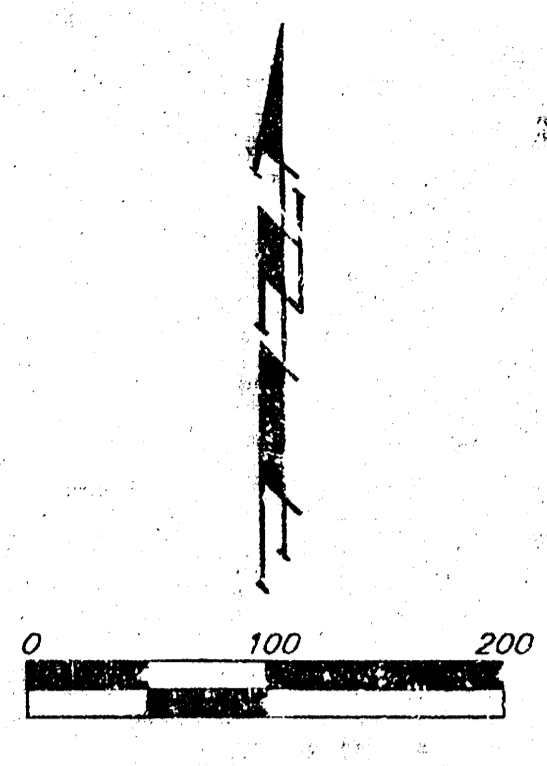


DRAINAGE PLAN

WESTRIDGE ADDITION

WICHITA, SEDGWICK COUNTY, KANSAS

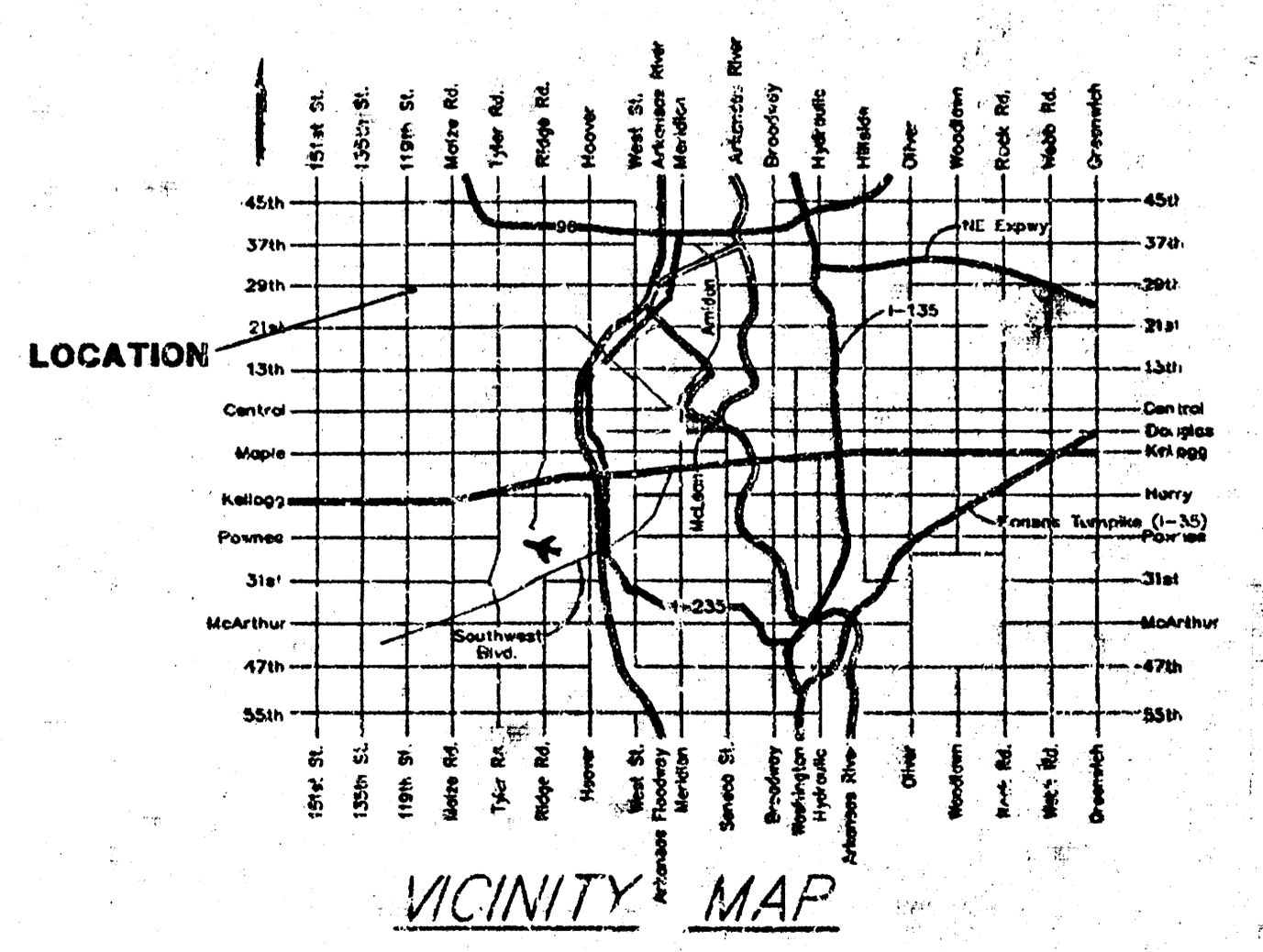
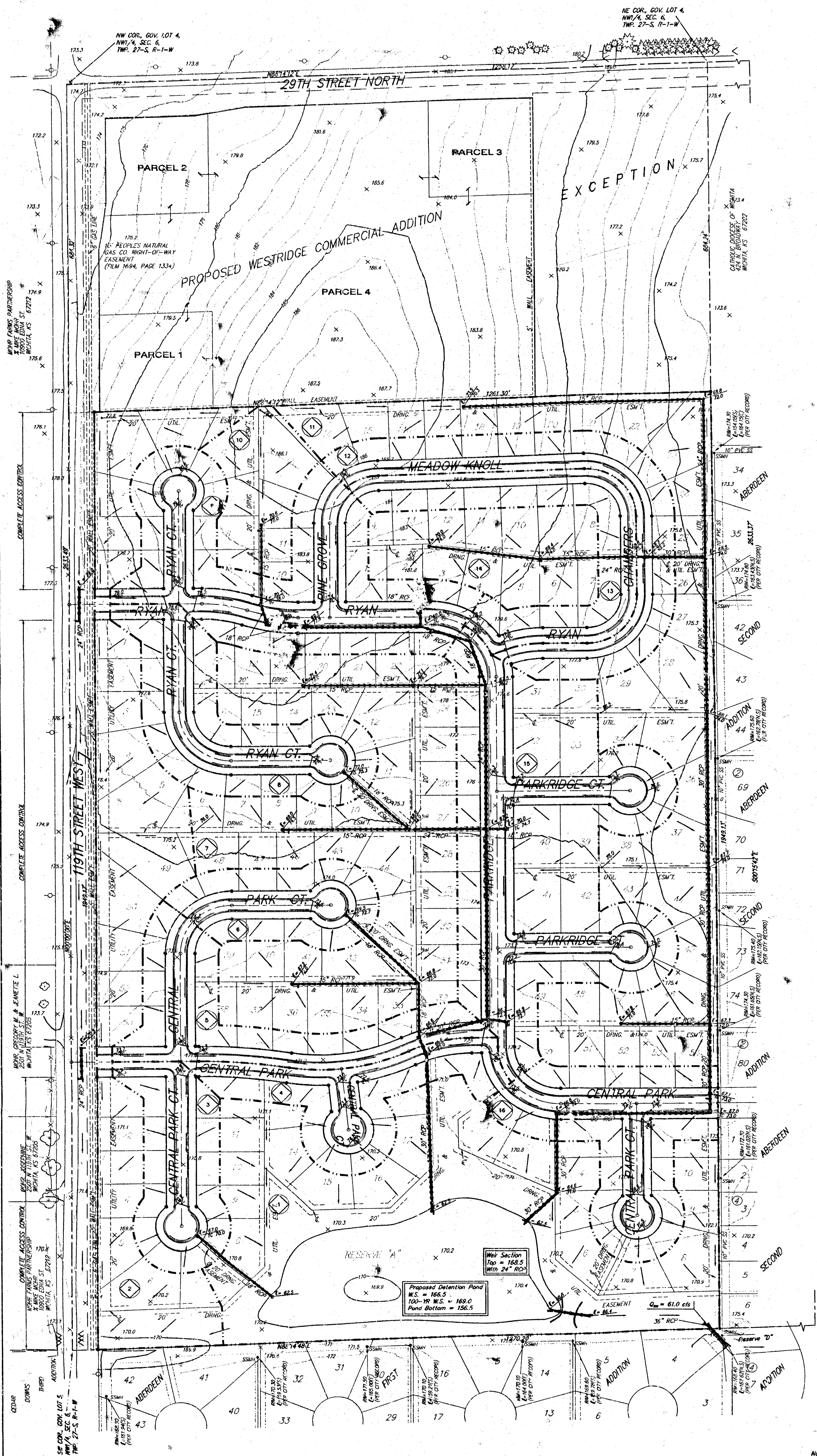


CONTOUR INTERVAL = 2 FT.
 • = #4 REINFORCED "BAUGHMAN" CAP (SET)
 ○ = UTILITY POLE

NOTE:
 AGREEMENT FOR DRAINAGE PURPOSES
 (MISC. BOOK 259, PAGE 365) OVER
 THE W1/2 OF THE NW1/4 OF SEC. 6,
 TWP. 27-S, R-1-W

NOTE:
 CITY SERVICE OIL & GAS CORP. PIPELINE
 RIGHT-OF-WAY EASEMENT
 (MISC. BOOK 122, PAGE 357)
 (FILM 620, PAGE 1257)

| Drainage Area | Area (Acres) | C ₁ | C ₂ | T ₁ (min) | T ₂ (hr) | Q ₁ (cfs) | Q ₂ (cfs) |
|---------------|--------------|----------------|----------------|----------------------|---------------------|----------------------|----------------------|
| 1 | 8.91 | .54 | .54 | 15 | 3.85 | 7.37 | 18.4 |
| 2 | 5.12 | .54 | .54 | 15 | 3.85 | 7.37 | 10.6 |
| 3 | 1.54 | .54 | .54 | 15 | 3.85 | 7.37 | 6.14 |
| 4 | 1.69 | .54 | .54 | 15 | 3.85 | 7.37 | 3.50 |
| 5 | 2.00 | .54 | .54 | 15 | 3.85 | 7.37 | 4.12 |
| 6 | 1.33 | .54 | .54 | 15 | 3.85 | 7.37 | 2.75 |
| 7 | 6.21 | .54 | .54 | 15 | 3.85 | 7.37 | 11.8 |
| 8 | 2.35 | .54 | .54 | 15 | 3.85 | 7.37 | 4.86 |
| 9 | 3.77 | .54 | .54 | 15 | 3.85 | 7.37 | 7.80 |
| 10 | 1.19 | .54 | .54 | 15 | 3.85 | 7.37 | 2.45 |
| 11 | 6.32 | .54 | .54 | 15 | 3.85 | 7.37 | 13.1 |
| 12 | 2.19 | .54 | .54 | 15 | 3.85 | 7.37 | 4.53 |
| 13 | 1.83 | .54 | .54 | 15 | 3.85 | 7.37 | 3.78 |
| 14 | 1.76 | .54 | .54 | 15 | 3.85 | 7.37 | 3.70 |
| 15 | 5.78 | .54 | .54 | 15 | 3.85 | 7.37 | 12.0 |
| 16 | 2.38 | .54 | .54 | 15 | 3.85 | 7.37 | 4.82 |



NOTE:
 AERIAL TOPOGRAPHY BY:
 WESTERN AIR MAPS, INC.
 9401 REEST ROAD
 OVERLAND PARK, KS 66207
 (DATE OF TOPG. = 5/20/99)

BAUGHMAN COMPANY P.A.
 ENGINEERING, SURVEYING, & PLANNING
 316-262-7271 • 315 E. 5th St. • WICHITA, KANSAS 67211