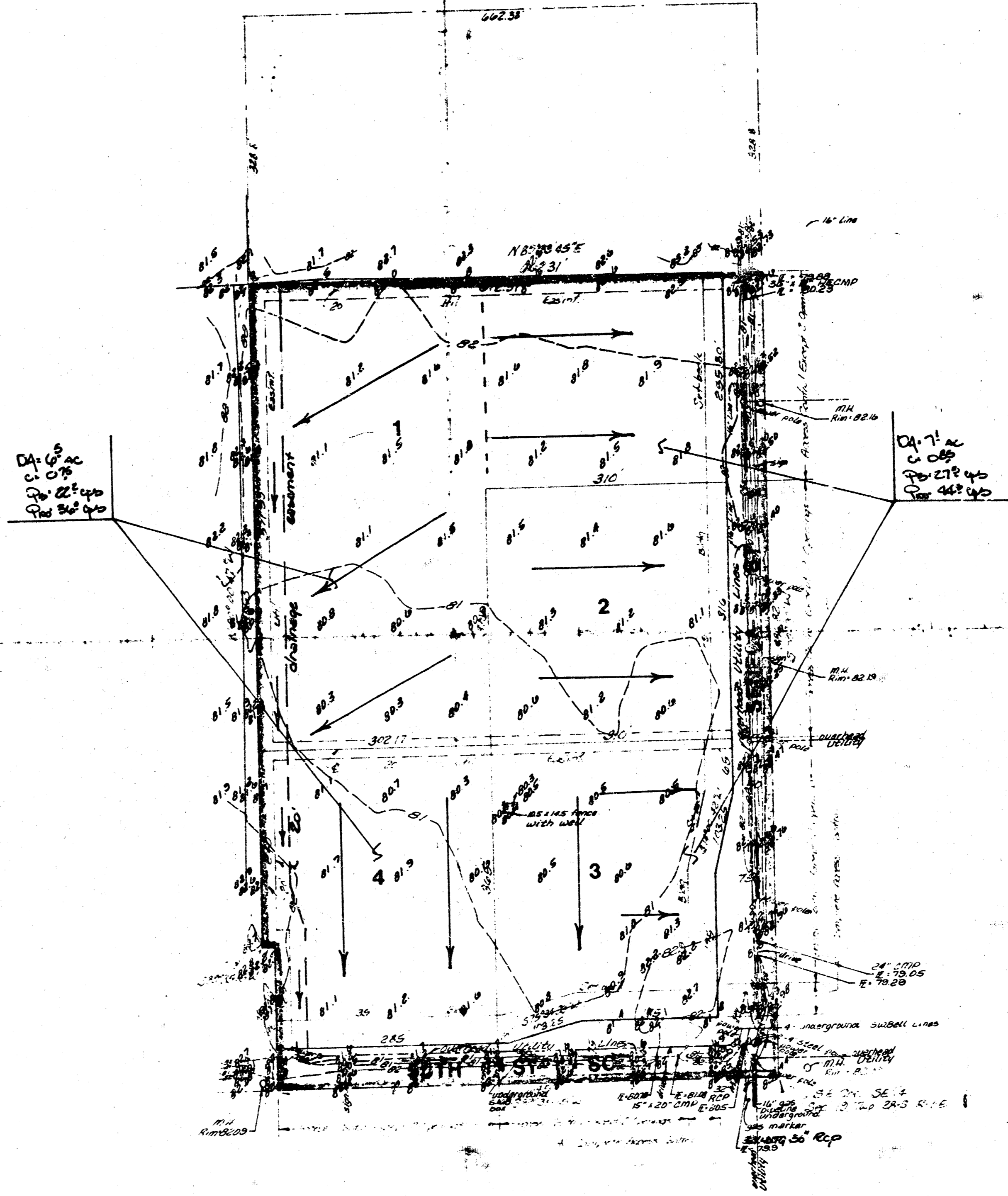
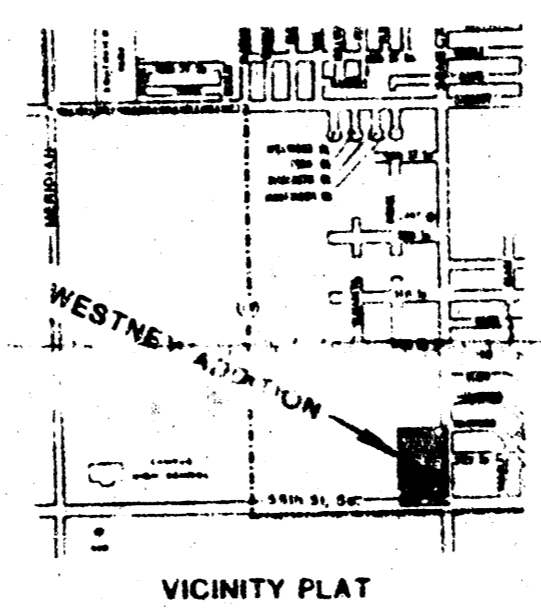


Westney

N
1" = 100'
Elevations - City Datum
Bench Marks - City Standard
Disc. 30' South & 15' East of
E. Seneca & 55th St. S.
Elevation - 86.123 City
Datum.



PRELIMINARY PLAT
WESTNEY ADDITION

WICHITA, KANSAS

PART OF THE E1/2 OF THE SE1/4 OF THE SE1/4 OF SEC 19,
TWP 28-S R-1-E OF THE 6TH PM, SEDGWICK COUNTY, KANSAS

WALT WESTNEY

DRAINAGE PLAN

BAUGHMAN COMPANY, P.A.
SURVEYING & ENGINEERING

316-292-7211 315 ELLIS WICHITA, KANSAS 67211

SEP 88