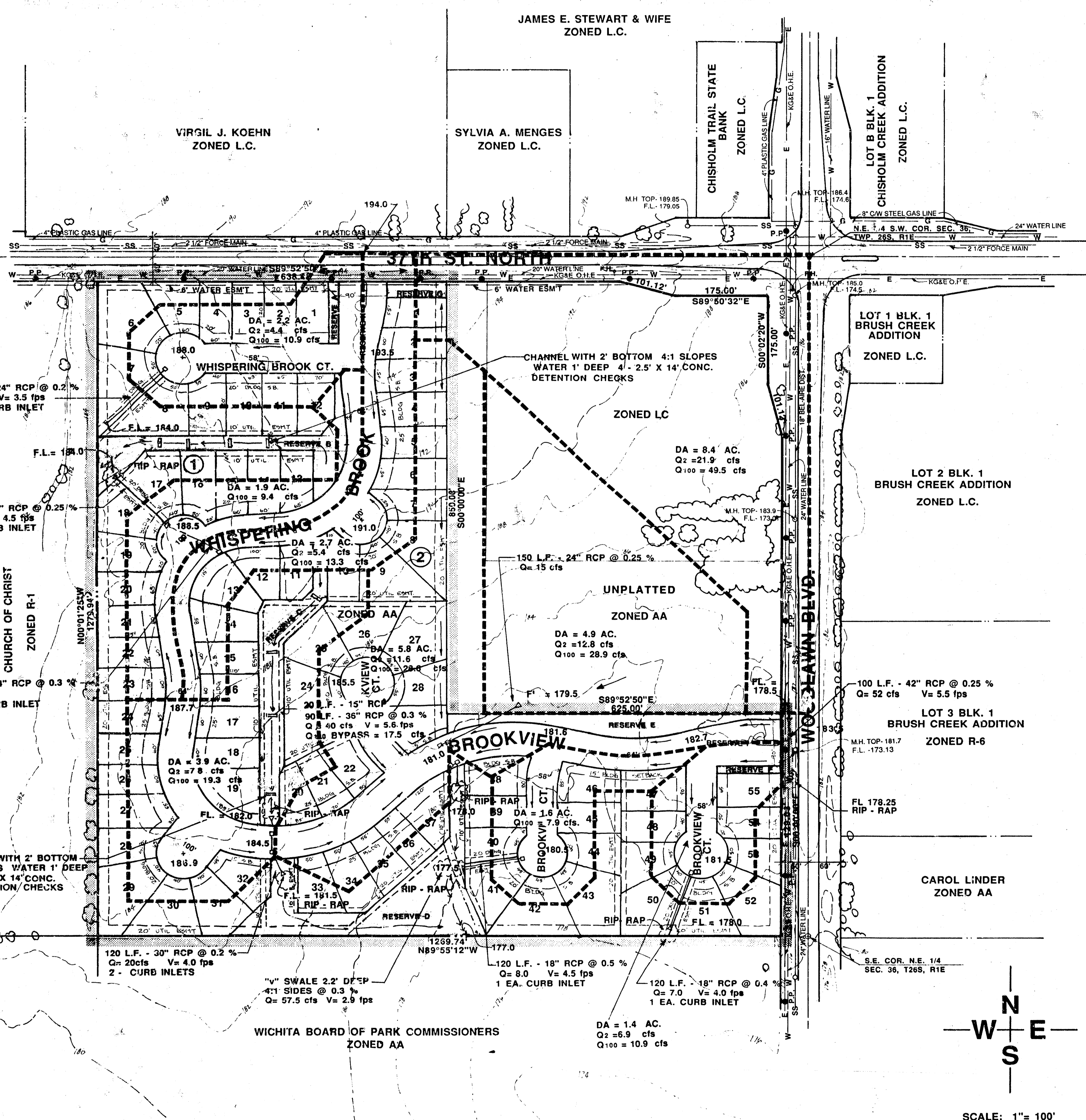


POE & ASSOCIATES OF KANSAS, INC.
 Consulting Engineers
 624 N. Oliver, Suite 110 Wichita, KS 67208
 316-625-4114

WHISPERING BROOK

RAINAGE PLAN

PREPARED BY: NESTOR R. WEIGAND JR., LESLIE RUDD & DEBORAH FREEMAN, 151 N. MARKET, WICHITA, KANSAS 67202
 PHONE: 316-262-5400



TIME OF CONCENTRATION
 15 MINUTE MINIMUM
 I₂ = 3.83
 I₁₀₀ = 7.37

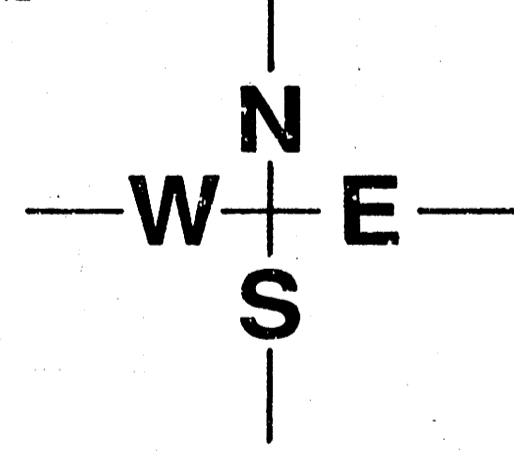
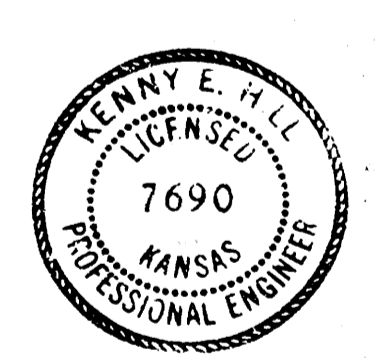
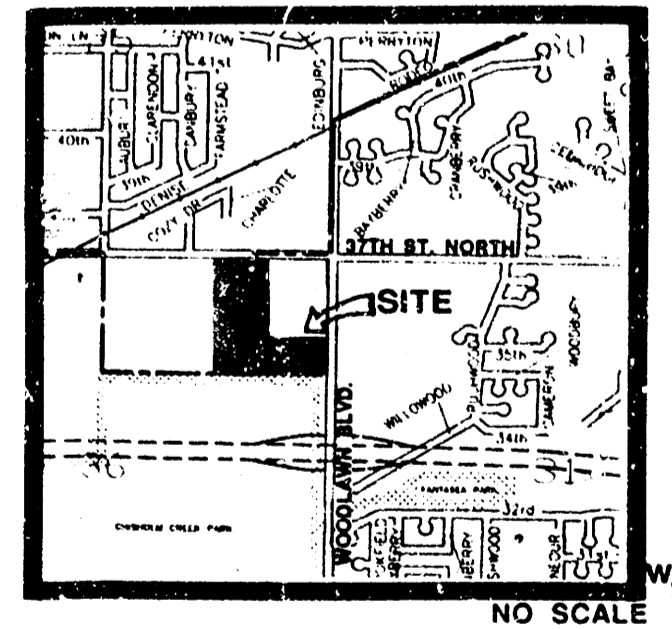
SOIL TYPE
 Fb - Farnum
 HYDROLOGIC GROUP B

C FACTORS
 LIGHT COMMERCIAL
 C₂ = 0.69
 C₁₀₀ = 0.80

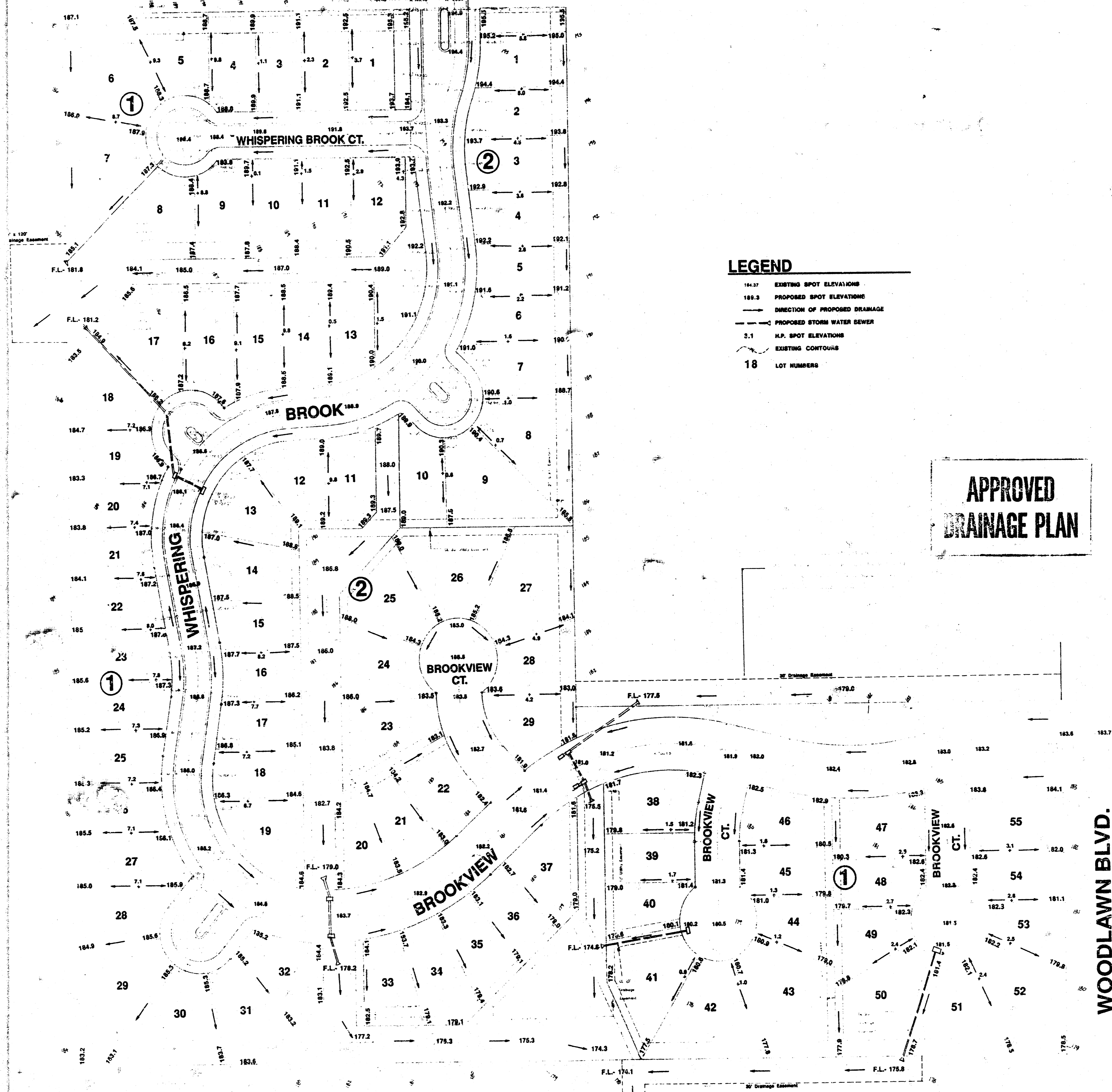
RESIDENTIAL
 C₂ = 0.52
 C₁₀₀ = 0.67

- NOTES:**
- BENCHMARK 70' W. AND 30' N. OF BOTH WOODLAWN & 37TH ST. NO., CITY OF WICHITA DATUM. ELEV. - 186.169.
 - TOPOGRAPHY OBTAINED DECEMBER 7, 1981.
 - DRAINAGE CONCEPT PLAN TO BE PREPARED BY POE & ASSOCIATES AND SUBMITTED TO CITY ENGINEER.
 - RESERVES B, C, D & E TO PERMIT DRAINAGE, DRAINAGE STRUCTURES, PONDS, LANDSCAPING, SIDEWALKS, GAZEBOS, RECREATION FACILITIES AND UTILITIES CONFINED TO EASEMENTS & UTILITY SERVICE CONNECTIONS.
 - RESERVES A, F, G, H & I TO PERMIT LANDSCAPING, ENTRY MONUMENTS, IRRIGATION, SIDEWALK AND UTILITIES CONFINED TO EASEMENTS.

APPROVED DRAINAGE PLAN



37TH STREET NORTH



LOT GRADING PLAN

WHISPERING BROOK

AN ADDITION TO WICHITA - SEDGWICK COUNTY KANSAS

FROM THE BEST