

**DRAINAGE PLAN
WILBUR ADDITION
WICHITA, SEDGWICK COUNTY, KANSAS**

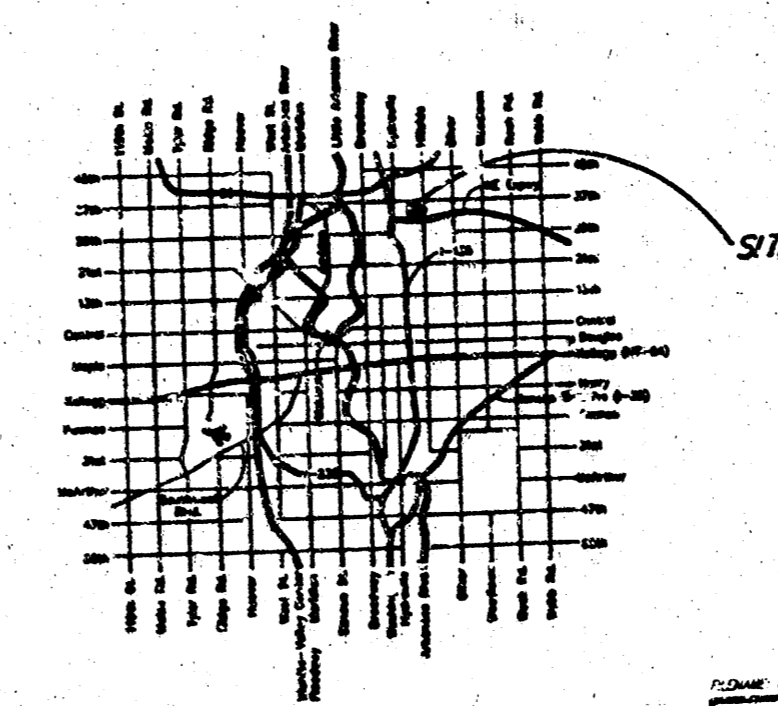
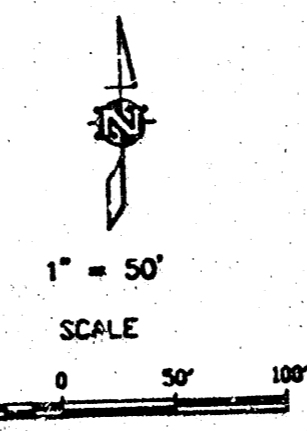
AREA = 6.51 AC.

Undeveloped Conditions:
5 Yr. $c=0.35, i=2.68$ in/hr
5 Yr. $Q = 6.1$ cfs
100 Yr. $c=0.65, i=4.54$ in/hr
100 Yr. $Q = 18.2$ cfs

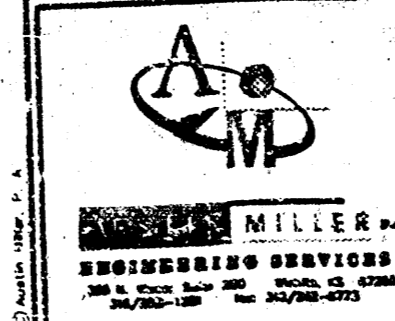
Developed Conditions:
5 Yr. $c=0.65, i=5.37$ in/hr
5 Yr. $Q = 15.1$ cfs
100 Yr. $c=0.85, i=5.59$ in/hr
100 Yr. $Q = 29.1$ cfs

NOTES:

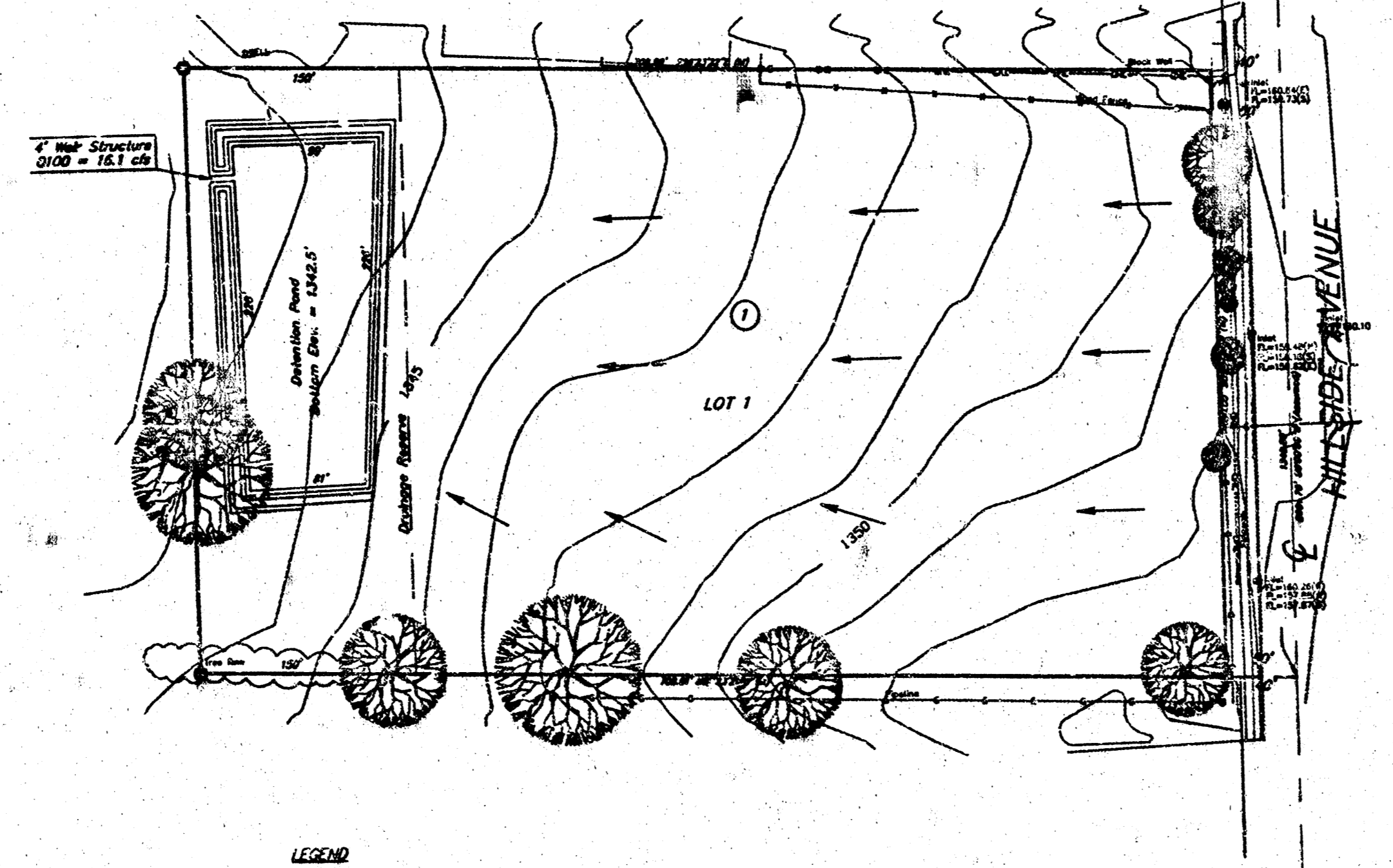
1. All runoff shall follow existing drainage patterns to the west edge of the property.
2. On-site detention will be required. Max. allowable $Q_{100} = 18.2$ cfs.
3. Final detention pond configuration shall be determined at time of development.



LOCATION MAP



N 1/4 CORNER SEC. 34, T26S, R1E
37th STREET NORTH
NE CORNER SEC. 34, T26S, R1E



LEGEND

- 1/2" Iron Pipe (Sound)
- ◆ 3/4" Rubber (Sew) ALPA CDS #104
- △ 1/2" Iron in (Reinforced) (Sound)
- Direction of Flow

E 1/4 CORNER SEC. 34, T26S, R1E