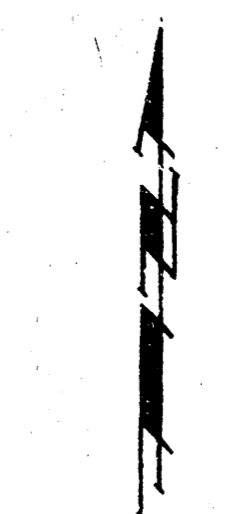
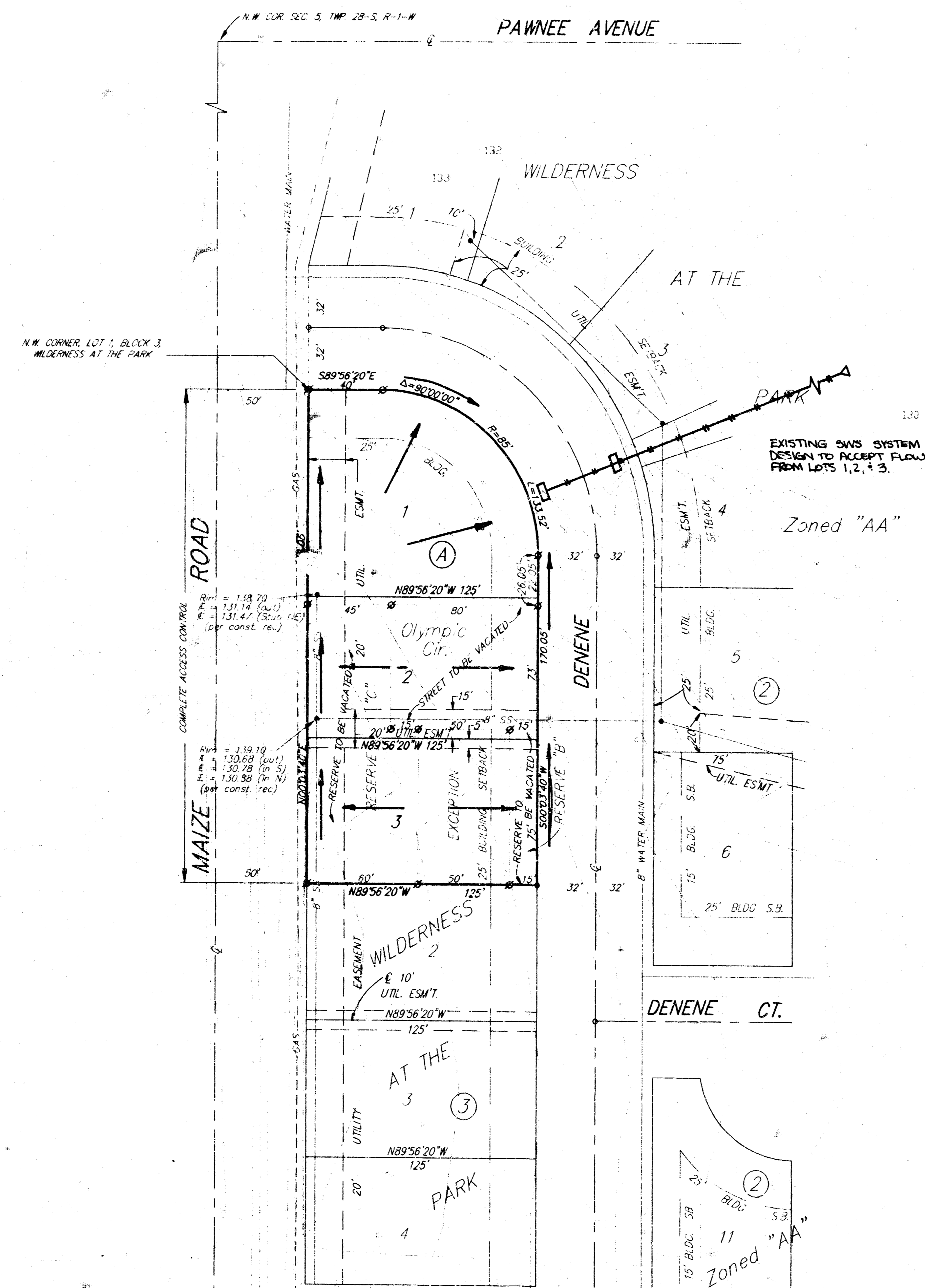


DRAINAGE PLAN

WILDERNESS AT THE PARK 2ND

AN ADDITION TO WICHITA, SEDGWICK COUNTY, KANSAS



SCALE
 1" = 40'
 * = 1/2" Rebar w/ "BAUGHMAN" Cap (set)
 Ø = 1/2" Rebar w/ "BAUGHMAN" Cap (found)

OWNER
 A-K Corporation
 Attn: A. J. Soerries
 902 N. West St.
 Wichita, KS 67203
 (316) 943-2308

LEGAL
 A replat of Lot 1, Blk. 3, Reserve "B",
 Reserve "C", Olympic Circle, and
 the Exception within Wilderness
 At The Park, an addition to
 Wichita, Sedgwick County, Kansas.

BENCHMARK
 City Standard Disc. 42.3" S.
 & 49.5" W. of E. of Maize Road
 & Pawnee Avenue
 Elev. = 135.10 (city datum)
 = 1322.50 (M.S.L.)

VICINITY MAP

21 November 1994