

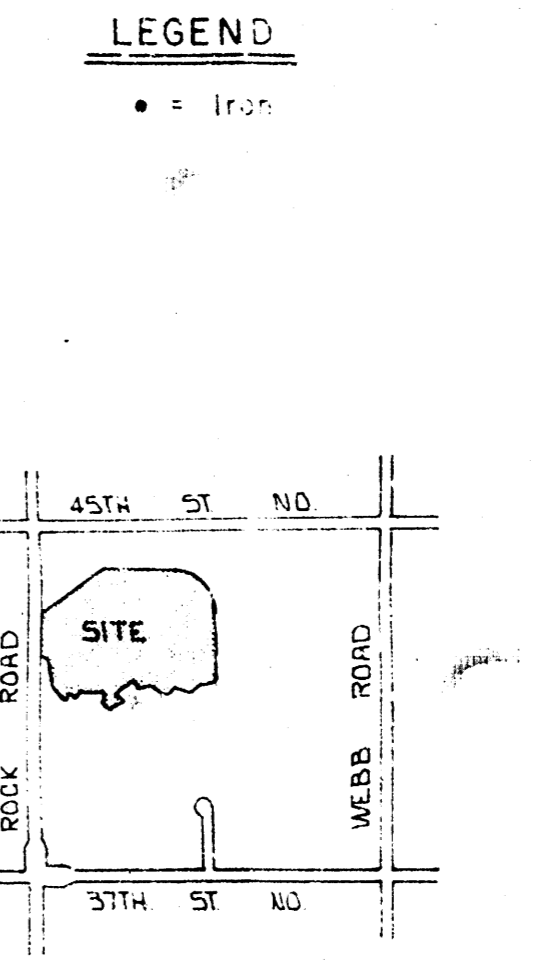
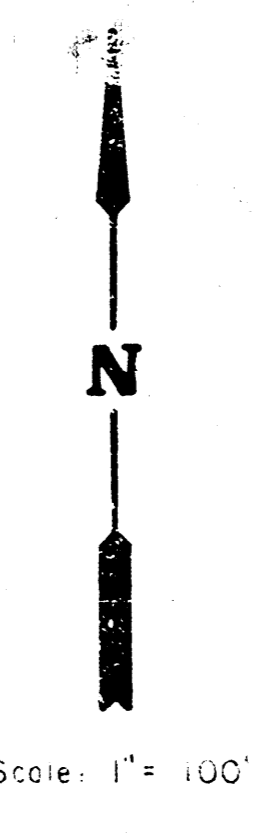
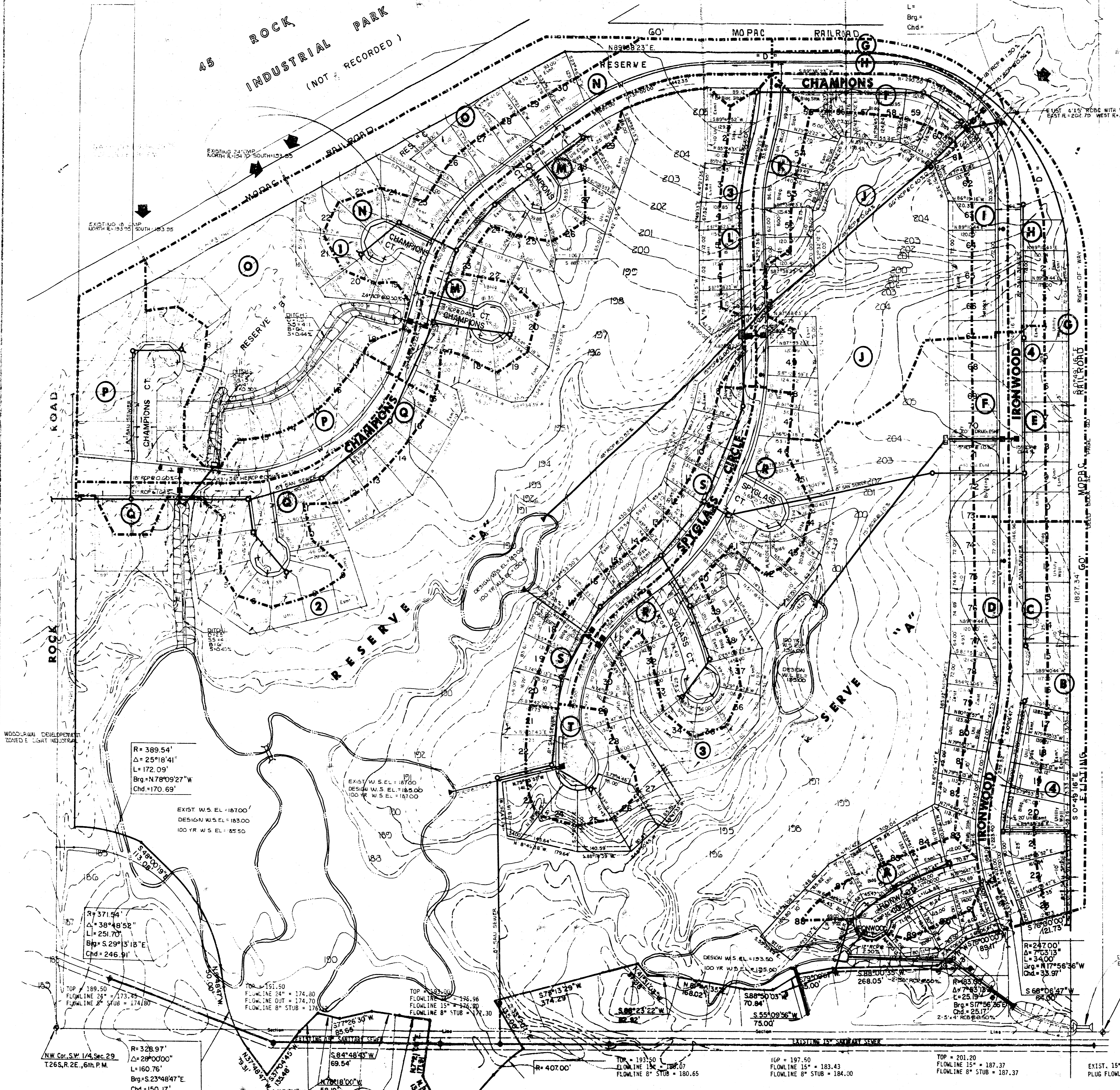
DRAINAGE AND UTILITY PLAN

MULBERRY EAST SECOND

AN ADDITION TO WICHITA, SEDGWICK COUNTY, KANSAS

NE 1/4, NW 1/4, Sec. 29
T.26S, R.2E, 6th. PM

WILLIAMS AND PARTNER
(Engineers)
(This Mulberry East 2nd Addition)



LOCATION MAP

<p>R = 389.54' Δ = 25°18'41" L = 172.09' Brg = N78°09'27"W Chd = 170.69'</p> <p>EXIST. W.S. EL. = 187.00 DESIGN W.S. EL. = 185.00 100 YR. W.S. EL. = 181.50</p>	<p>R = 371.44' Δ = 38°48'52" L = 251.70' Brg = S29°3'18"E Chd = 246.91'</p> <p>TOP = 189.50 FLOWLINE 24" = 173.25 FLOWLINE 24" STUB = 174.80</p>	<p>R = 328.97' Δ = 28°00'00" L = 160.76' Brg = S23°48'47"E Chd = 150.17'</p> <p>NW 1/4, SW 1/4, Sec. 29 T.26S, R.2E, 6th. PM.</p>	<p>R = 407.00'</p> <p>TOP = 193.50 FLOWLINE 15" = 187.07 FLOWLINE 8" STUB = 180.65</p>	<p>TOP = 197.50 FLOWLINE 15" = 183.43 FLOWLINE 8" STUB = 184.00</p>	<p>TOP = 201.20 FLOWLINE 15" = 187.37 FLOWLINE 8" STUB = 187.37</p>	<p>EXIST. 15" SAN. SEW. PLUS FLOWLINE = 189.89</p>
---	--	---	--	---	---	--

MULBERRY EAST
ZONED E Light Industrial

AREA	AREA (ACRES)	AREA (SQ. FT.)	AREA (SQ. YD.)	AREA (SQ. MI.)	AREA (SQ. IN.)	AREA (SQ. FT.)	AREA (SQ. YD.)	AREA (SQ. MI.)	AREA (SQ. IN.)
A	1.41	96,800	10,700	0.0036	10,700	10,700	10,700	0.0036	10,700
B	2.41	162,400	18,000	0.0063	18,000	18,000	18,000	0.0063	18,000
C	2.28	151,680	16,800	0.0060	16,800	16,800	16,800	0.0060	16,800
D	1.93	128,640	14,300	0.0053	14,300	14,300	14,300	0.0053	14,300
E	0.96	64,800	7,200	0.0027	7,200	7,200	7,200	0.0027	7,200
F	0.93	62,400	7,000	0.0026	7,000	7,000	7,000	0.0026	7,000
G	3.80	254,400	28,300	0.0087	28,300	28,300	28,300	0.0087	28,300
H	67	4,488,000	503,000	0.1411	503,000	503,000	503,000	0.1411	503,000
I	2.48	165,120	18,400	0.0060	18,400	18,400	18,400	0.0060	18,400
J	89.88	5,952,000	672,000	0.1920	672,000	672,000	672,000	0.1920	672,000
K	1.8	119,040	13,300	0.0053	13,300	13,300	13,300	0.0053	13,300
L	2.15	142,560	15,900	0.0061	15,900	15,900	15,900	0.0061	15,900
M	3.73	245,280	27,600	0.0079	27,600	27,600	27,600	0.0079	27,600
N	73.21	4,812,000	545,000	0.1511	545,000	545,000	545,000	0.1511	545,000
O	0.93	62,400	7,000	0.0026	7,000	7,000	7,000	0.0026	7,000
P	1.32	87,840	9,800	0.0029	9,800	9,800	9,800	0.0029	9,800

