

N.W. Cor. NE 1/4, NW 1/4, Sec 15, T28S, R1E, 6th P.M. rd. 1/2" I.P. in thimble

N.E. Cor. NW 1/4 Sec. 15 T28S, R1E of 6th P.M. rd. 1/2" I.P. in thimble

Continental Oil Company Pipeline (Film 191, Pg 1475)

Northwest Central Pipeline Co. (Misc. Bk 42, Pg 98)

LEGEND

--- Drainage Basin Boundary

→ Drainage Direction

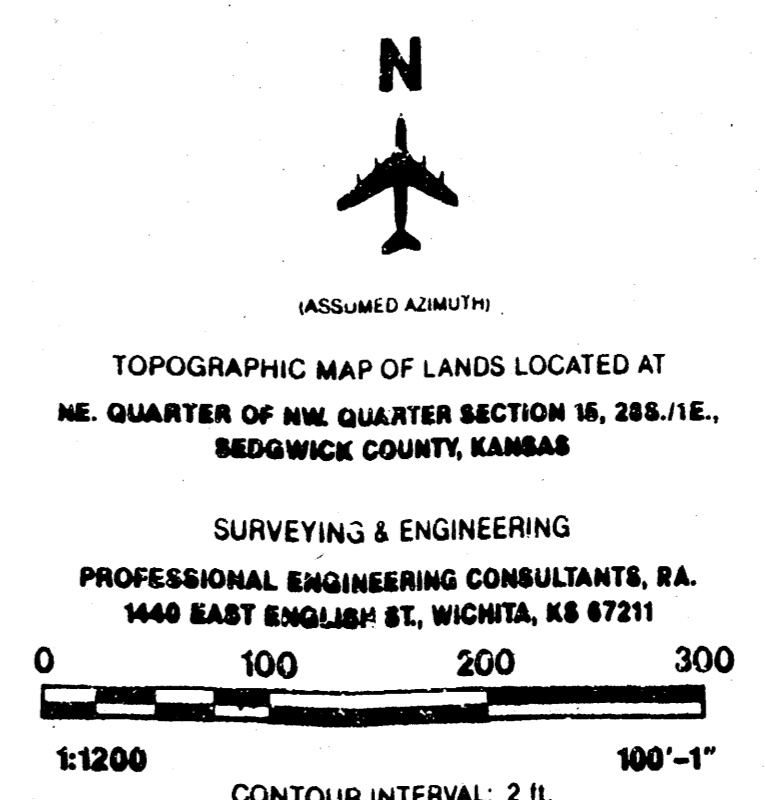
15" Proposed Culvert with Size

BENCH MARK C.o.W Disk 31 ft west and 31 ft south of the intersection of Hydraulic & MacArthur. Elev. 86.27 City or 1273.67 MSL

NOTES

Soil Type Ca, Hydrologic Group B

Entire plat to drain internally via private streets, drives, flumes, and storm sewers to private detention area, with discharge to the KTA ditch. Final configuration of the private drainage and detention facilities will be determined at the time of site development. Refer to Drainage Plan and Supporting Calculation for Emery Park Addition dated July 15, 1988 and on file at the City Engineer's Office.

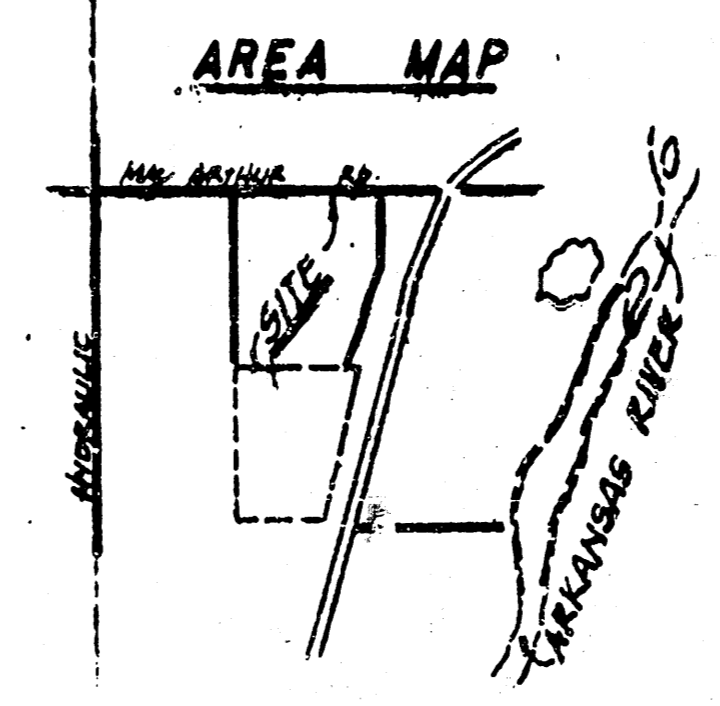


ASSUMED ADJUSTED

TOPOGRAPHIC MAP OF LANDS LOCATED AT THE QUARTER OF NW QUARTER SECTION 16, 28S.1E., REDWICK COUNTY, KANSAS

SURVEYING & ENGINEERING PROFESSIONAL ENGINEERING CONSULTANTS, P.A. 1440 EAST ENGLISH ST., WICHITA, KS 67211

PHOTOGRAMMETRY BY: AERIAL PHOTOGRAPHY MILES AIR PHOTO SURVEY THE VERTICAL HEIGHT OF: 101 THURSTON STREET ALTITUDE: 3,000 A.M.S.L. MANHATTAN, KANSAS 66502 DATES OBTAINED: 25 JUL 1988 WICHITA-338 FILE W-220 P-11



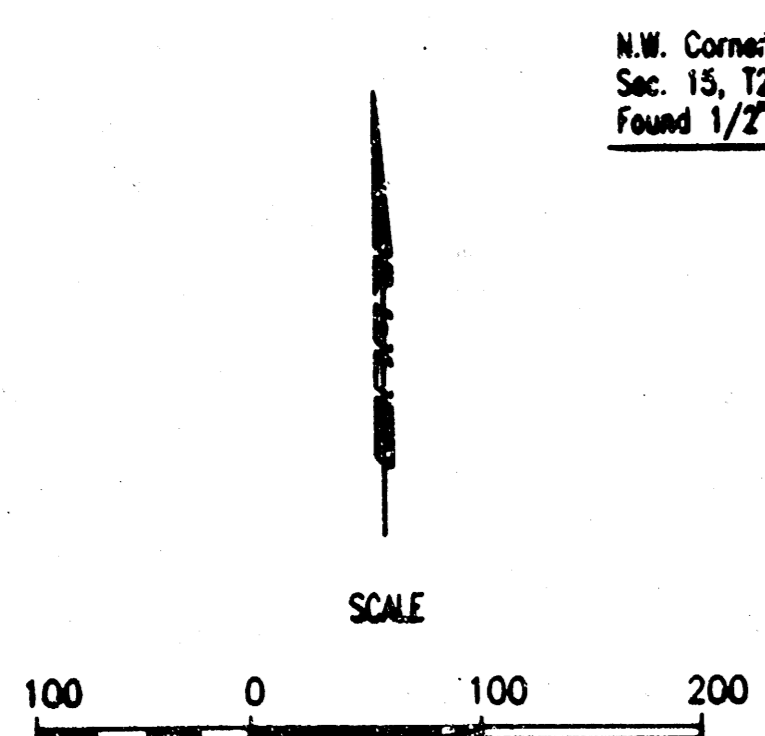
DRAINAGE PLAN
WILLOWOOD ESTATES

PROFESSIONAL ENGINEERING CONSULTANTS, P.A.
ENGINEERS
WICHITA, KANSAS

| | | | |
|-------------|-----|------------|------------|
| Designed by | MWB | Checked by | |
| Drawn by | DEP | Date | 11/5/88 |
| | | Job | 36-96329-2 |

WILLOWOOD ESTATES ADDITION

MOBILE HOME PARK DRAINAGE PLAN



GENERAL
 100 SPACES @ 50'-55'x100'
 63 SPACES @ 55'-60'x100'
 163 TOTAL SPACES
 TOTAL AREA = 35.9 ACRES
 DENSITY = 5.35 UNITS/ACRE
 ● = IRON SET
 UNPLATTED "SF-6"

B.M. - CITY OF MIDVA DISC 31' WEST AND 31' SOUTH OF THE INTERSECTION OF THE CENTERLINES OF HERRING AND MACARTHUR ROAD.
 ELEV.=86.273 CITY DATUM
 ELEV.=1273.673 M.S.L.

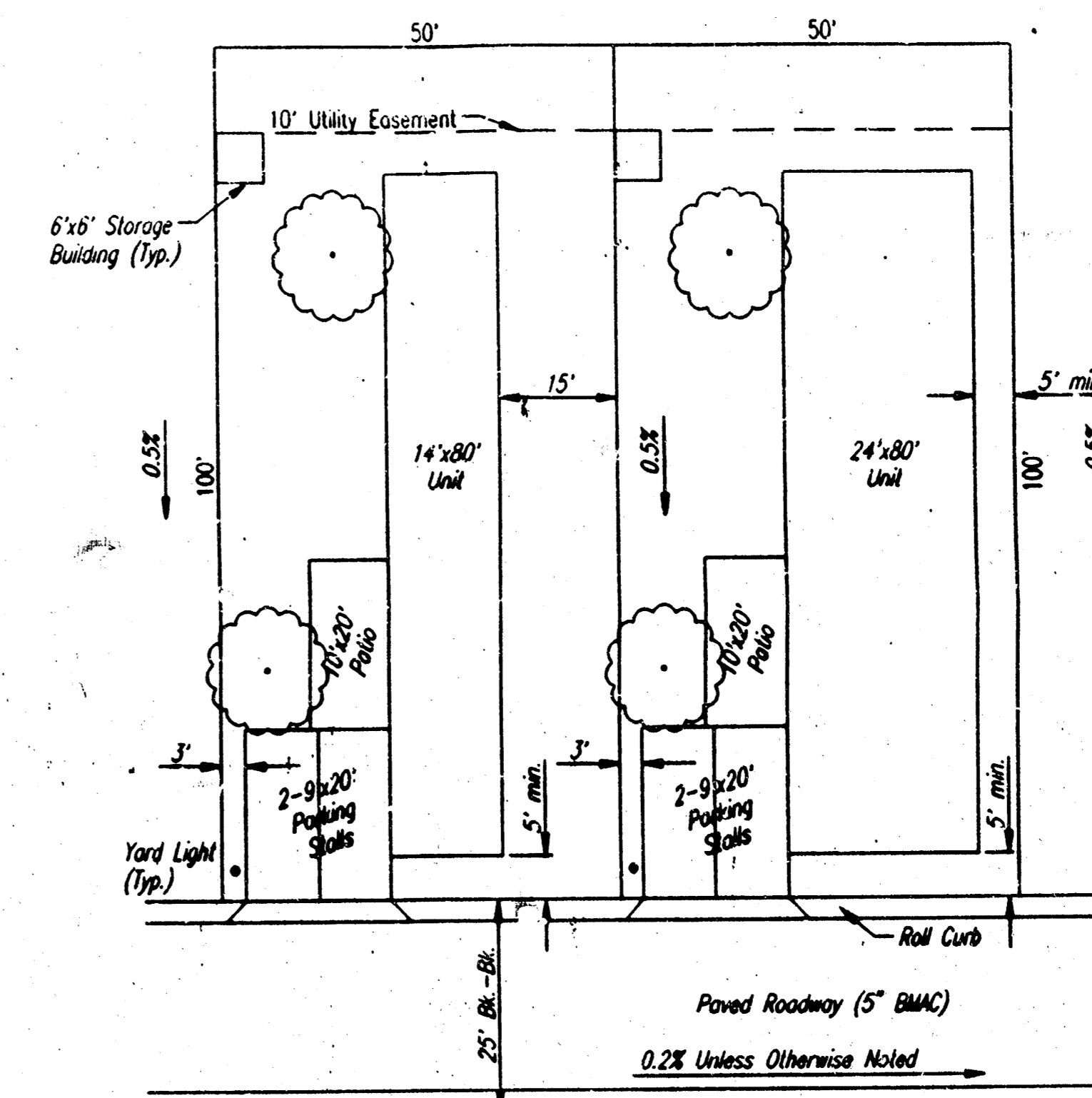
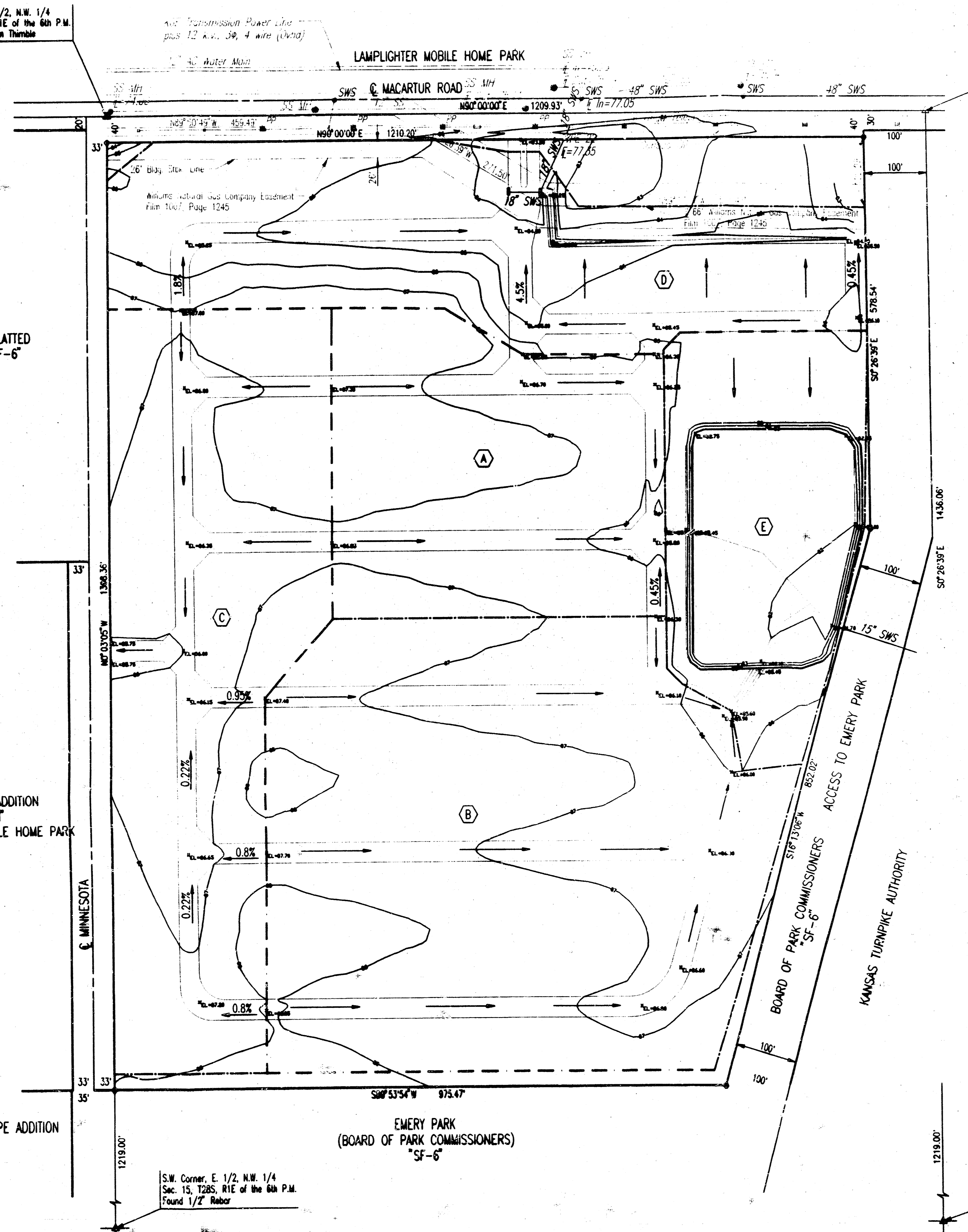
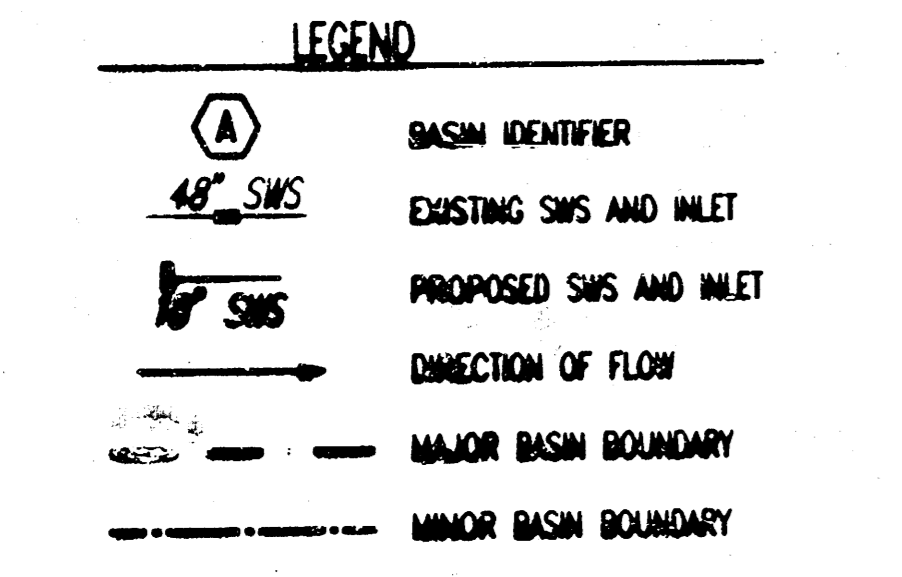
BENCHMARKS FROM MACARTHUR ROAD PLANS

B.M. - CHS W ON E. HEADWALL OF E. ENTRANCE APPROX. 610' EAST AND 80' NORTH OF N.W. CORNER 1/2, N.W. 1/4, SEC. 15, T28S, R1E
 ELEV.=86.54 CITY DATUM
 ELEV.=1273.94 M.S.L.

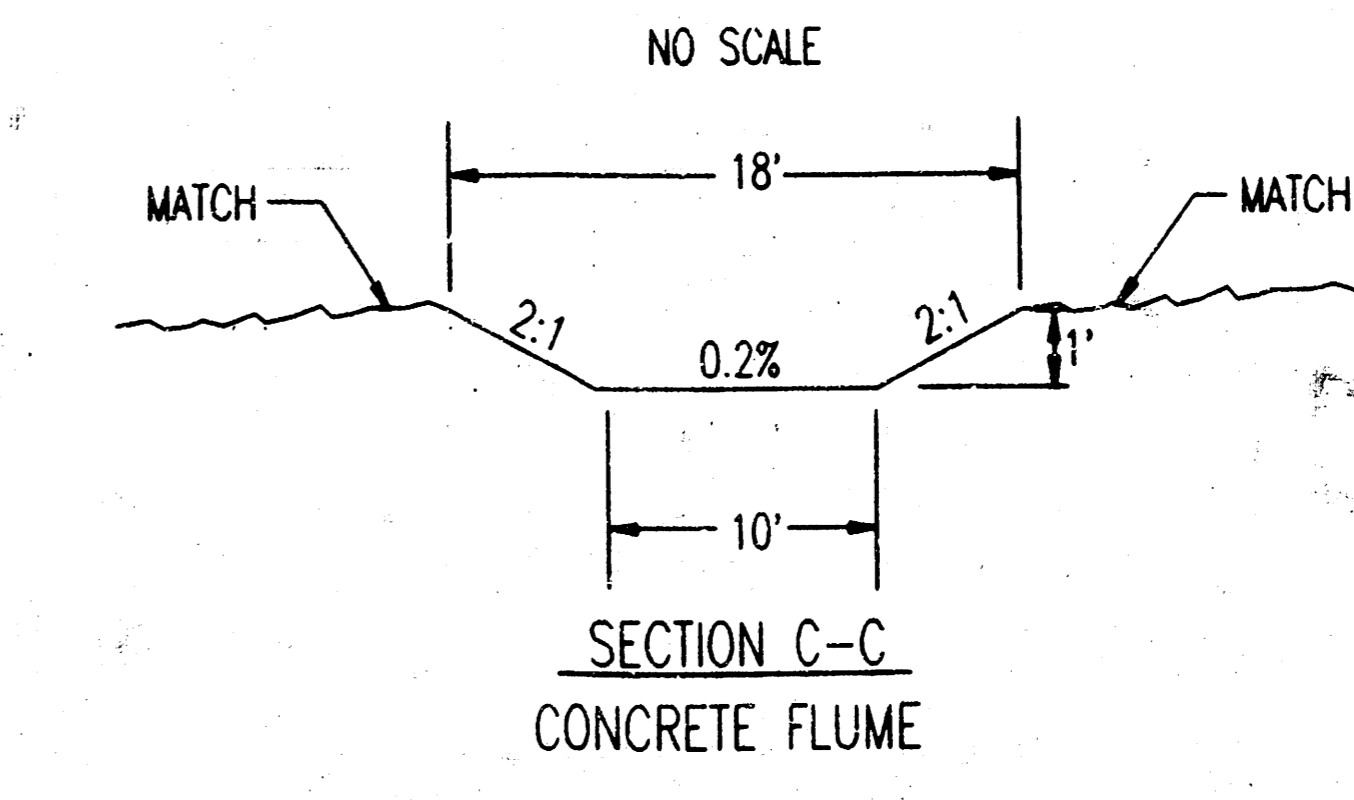
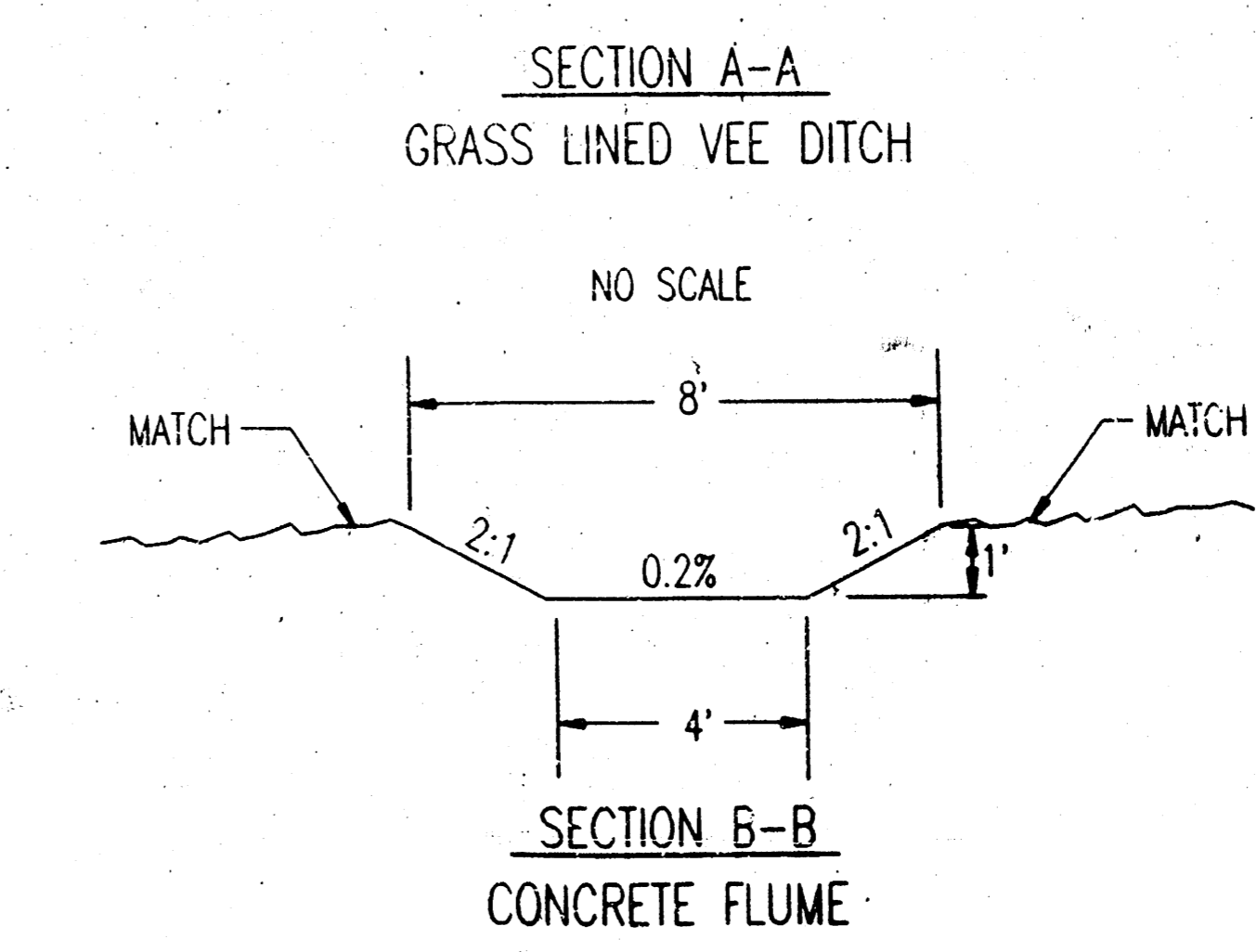
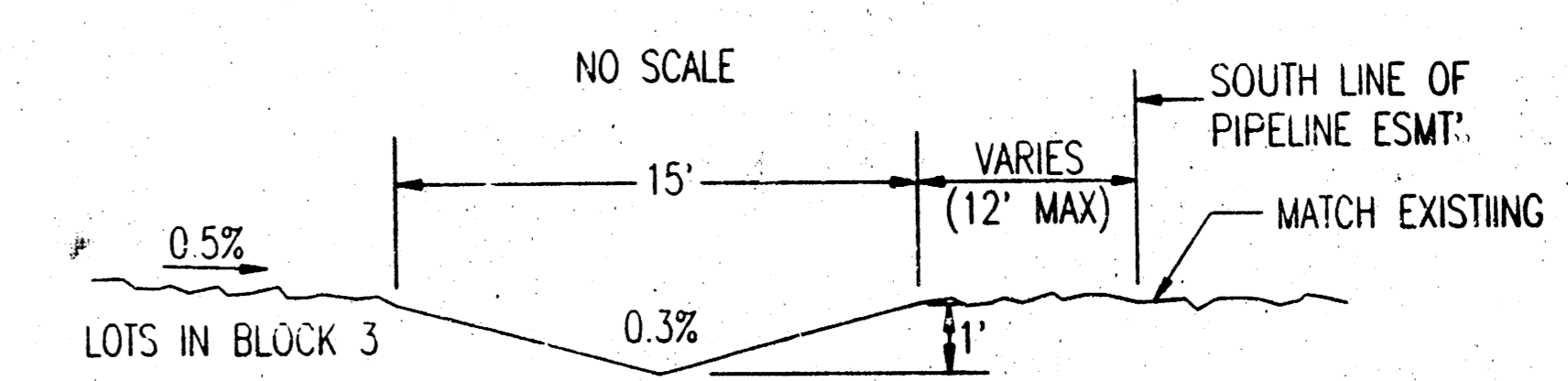
B.M. - R.P. SPINE IN 70' ELM. APPROX. APPROX. 770' EAST AND 115' NORTH OF N.W. CORNER 1/2, N.W. 1/4, SEC. 15, T28S, R1E
 ELEV.=83.88 CITY DATUM
 ELEV.=1271.28 M.S.L.

B.M. - R.P. SPINE IN POWER POLE APPROX. APPROX. 625' NORTH OF N.E. CORNER N.W. 1/4, SEC. 15, T28S, R1E
 ELEV.=85.5 CITY DATUM
 ELEV.=1272.9 M.S.L.

CAMELOT ADDITION
 "MH"
 WILLOWOOD MOBILE HOME PARK



TYPICAL SITE PLAN



DATE: 04/11/88
 DRAWN BY: J.M. MILLER
 CHECKED BY: J.M. MILLER
 SCALE: 1"=100.00'
 SHEET NO. 12-00-1000-14