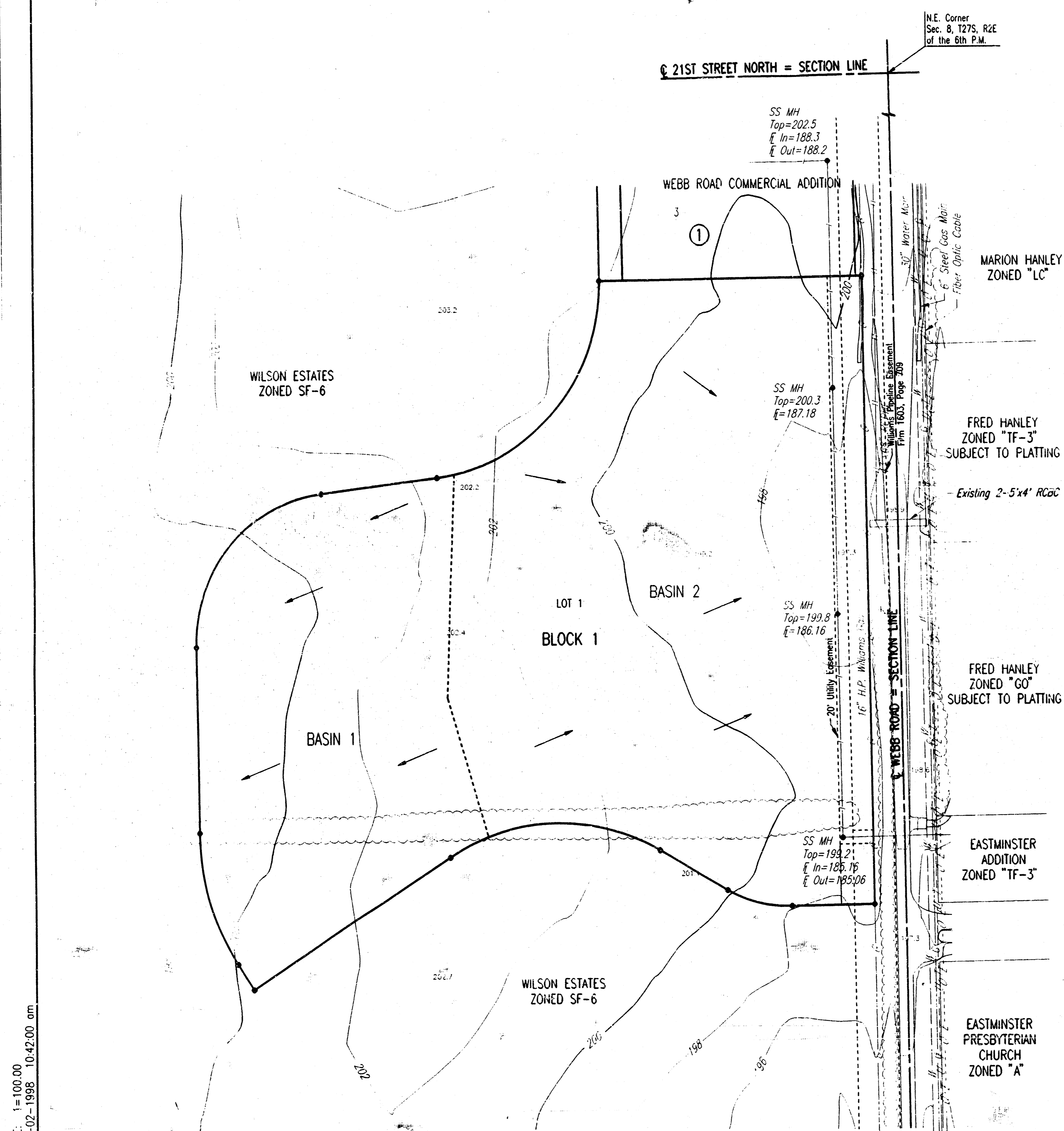


WILSON APARTMENTS ADDITION DRAINAGE PLAN



N.E. Corner
Sec. 8, T27S, R2E
of the 6th P.M.

21ST STREET NORTH = SECTION LINE

SS MH
Top=202.5
In=188.3
Out=188.2

WEBB ROAD COMMERCIAL ADDITION

MARION HANLEY
ZONED "LC"

SS MH
Top=200.3
In=187.18

FRED HANLEY
ZONED "TF-3"
SUBJECT TO PLATTING

Existing 2-5'x4' RC&C

SS MH
Top=199.8
In=186.16

FRED HANLEY
ZONED "GO"
SUBJECT TO PLATTING

SS MH
Top=199.21
In=188.19
Out=188.06

EASTMINSTER
ADDITION
ZONED "TF-3"

EASTMINSTER
PRESBYTERIAN
CHURCH
ZONED "A"

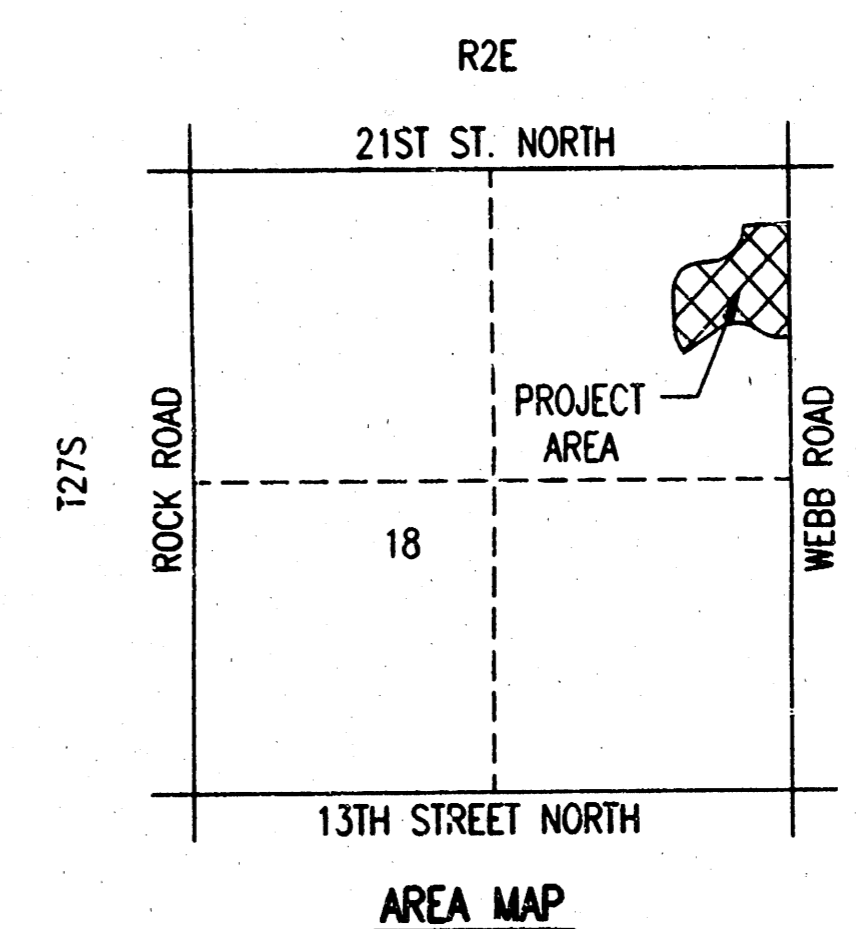
SCALE: 1"=100'

● = IRON SET

DATE: MARCH, 1998
TOPOGRAPHY: APRIL, 1995

B.M. - CITY OF WICHITA BENCH MARK DISC 44 FEET SOUTH AND
48 FEET EAST OF THE INTERSECTION OF CENTERLINES
OF WEBB ROAD AND 21ST STREET NORTH.
ELEV.=205.238 CITY DATUM

FOR ADDITIONAL INFORMATION AND SETBACK LINES SEE C.U.P.
EP-201 ON FILE AT THE WICHITA-SEDDGWICK COUNTY METROPOLITAN
AREA PLANNING DEPARTMENT, WICHITA, KANSAS.



DRAINAGE TO BE CONVEYED TO STREET RIGHT-OF-WAY VIA DRIVES, FLUMES, PRIVATE
STORM SEWERS, SWALES OR OTHER APPROVED DRAINAGE DEVICES.

BASINS 1 AND 2 WERE PREVIOUSLY INCLUDED AS PART OF THE PRELIMINARY DRAINAGE
STUDY INCLUDED IN BRADLEY FAIR 2ND ADDITION DRAINAGE PLAN. THIS PLAT WAS
INCLUDED IN PART OF BASINS 5 AND 7 OF THAT DRAINAGE PLAN. AS SEEN IN THE
B.F. 2ND DRAINAGE PLAN, DETENTION STORAGE FOR RUNOFF IN BASIN 1 WILL BE
PROVIDED FOR IN POND NO. 5 WHICH IS NOW PART OF WILSON FARMS ADDITION,
AND RUNOFF FROM BASIN TWO DRAINS TO THE EXISTING 2-5'x4' RC&C AS SHOWN.
THAT DRAINAGE PLAN ALSO DEMONSTRATES THAT BASIN 2 WAS INCLUDED IN BASINS
S-6 AND S-9 OF THE WEBB RD. IMPROVEMENTS DRAINAGE PLAN PERFORMED BY MKEC.
THE 'C' FACTORS USED IN THIS BASIN REPRESENTS DEVELOPED CONDITIONS,
THEREFORE NO DETENTION IN BASIN 2 IS REQUIRED.

DSNR, ORG. OPER. DIV. SCALE: 1"=100.00
 C:\1998\98087\DRAWING\ 03-02-1998 10:42:00 am