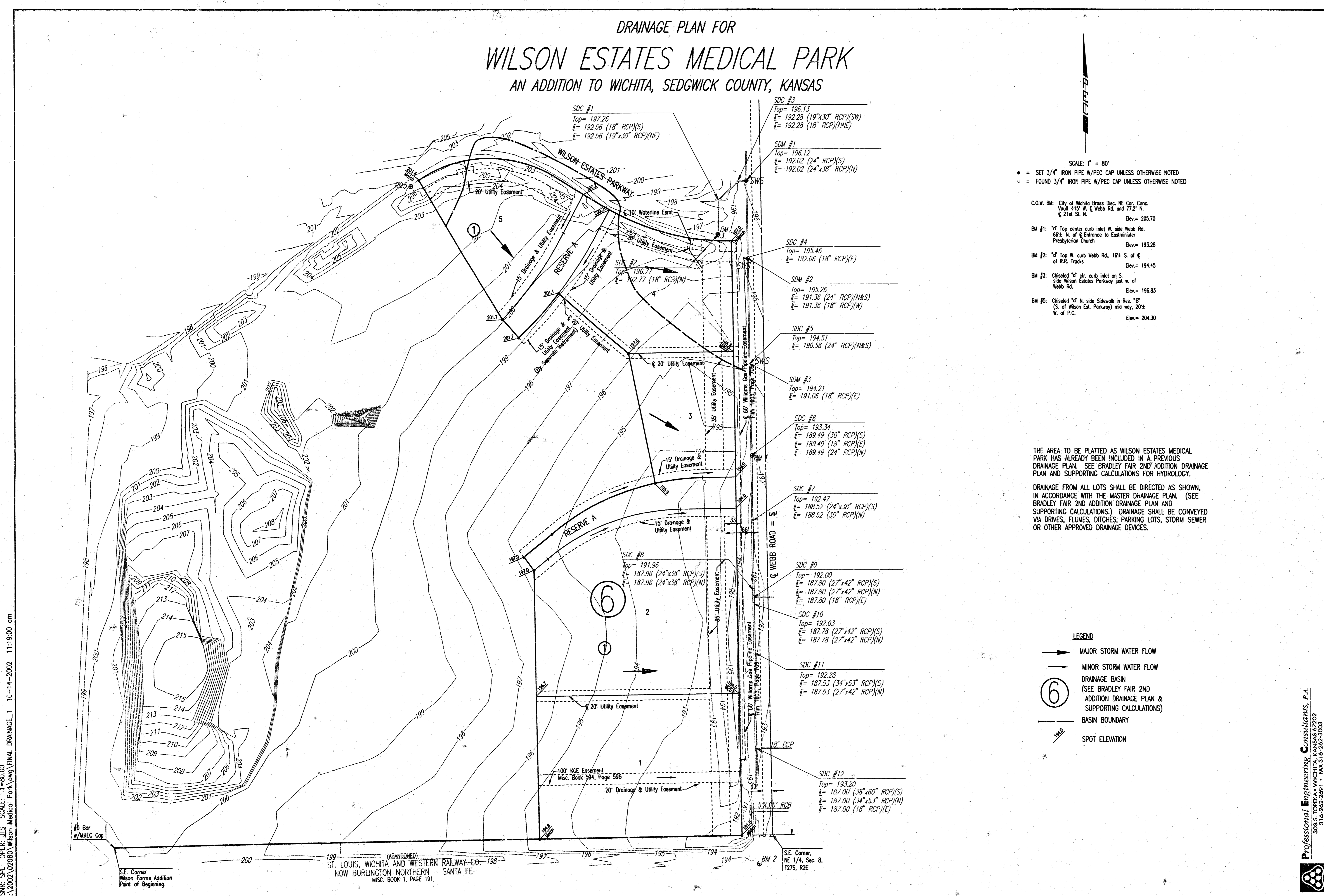


DRAINAGE PLAN FOR
WILSON ESTATES MEDICAL PARK
 AN ADDITION TO WICHITA, SEDGWICK COUNTY, KANSAS



SCALE: 1" = 80'
 ● = SET 3/4" IRON PIPE W/PEC CAP UNLESS OTHERWISE NOTED
 ○ = FOUND 3/4" IRON PIPE W/PEC CAP UNLESS OTHERWISE NOTED

- C.O.W. Bk: City of Wichita Brass Div. NE Cor. Conc. Vault 415' W. & Webb Rd. and 77.2' N. & 21st St. N. Elev. = 205.70
- BM #1: "d Top center curb inlet W. side Webb Rd. 66% N. of E Entrance to Eastminister Presbyterian Church Elev. = 193.28
- BM #2: "d Top W. curb Webb Rd., 16% S. of E. of R.R. Tracks Elev. = 194.45
- BM #3: Chiseled "d cur. curb inlet on S. side Wilson Estates Parkway just W. of Webb Rd. Elev. = 196.83
- BM #5: Chiseled "d N. side Sidewalk in Res. "6" (S. of Wilson Est. Parkway) mid way, 20% W. of P.C. Elev. = 204.30

THE AREA TO BE PLATTED AS WILSON ESTATES MEDICAL PARK HAS ALREADY BEEN INCLUDED IN A PREVIOUS DRAINAGE PLAN. SEE BRADLEY FAIR 2ND ADDITION DRAINAGE PLAN AND SUPPORTING CALCULATIONS FOR HYDROLOGY.

DRAINAGE FROM ALL LOTS SHALL BE DIRECTED AS SHOWN, IN ACCORDANCE WITH THE MASTER DRAINAGE PLAN. (SEE BRADLEY FAIR 2ND ADDITION DRAINAGE PLAN AND SUPPORTING CALCULATIONS.) DRAINAGE SHALL BE CONVEYED VIA DRIVES, FLUMES, DITCHES, PARKING LOTS, STORM SEWER OR OTHER APPROVED DRAINAGE DEVICES.

- LEGEND**
- ➔ MAJOR STORM WATER FLOW
 - ➞ MINOR STORM WATER FLOW
 - ⑥ DRAINAGE BASIN (SEE BRADLEY FAIR 2ND ADDITION DRAINAGE PLAN & SUPPORTING CALCULATIONS)
 - BASIN BOUNDARY
 - 198.0 SPOT ELEVATION

DSNR, SPL OPER. JUS SCALE: 1"=80.00
 G:\2002\02060\Wilson-Medical Park\DWG\FINAL DRAINAGE_1 IC-14-2002 11:19:00 am

SE Corner
 Wilson Farms Addition
 Point of Beginning

(ABANDONED)
 ST. LOUIS, WICHITA AND WESTERN RAILWAY CO. 198
 NOW BURLINGTON NORTHERN - SANTA FE
 MISC. BOOK 1, PAGE 191

SE Corner,
 NE 1/4, Sec. 8,
 T27S, R2E

Professional Engineering Consultants, P.A.
 303 S. TOPEKA - WICHITA, KANSAS 67202
 316-262-2601 • FAX 316-262-3003

