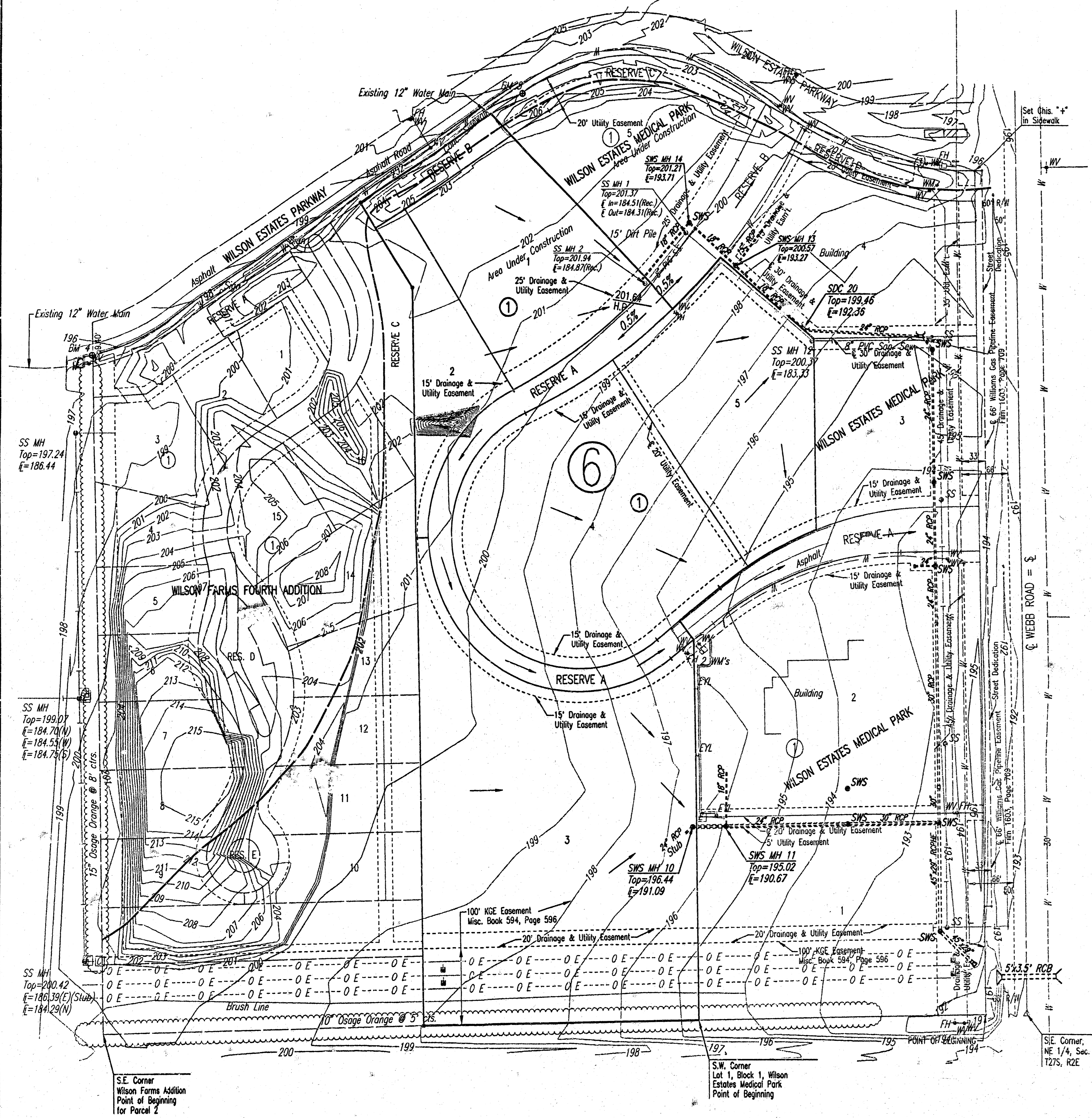


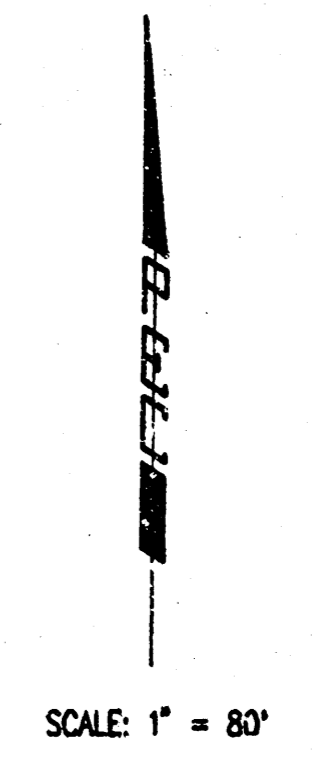
# DRAINAGE PLAN

## WILSON ESTATES MEDICAL PARK 2ND

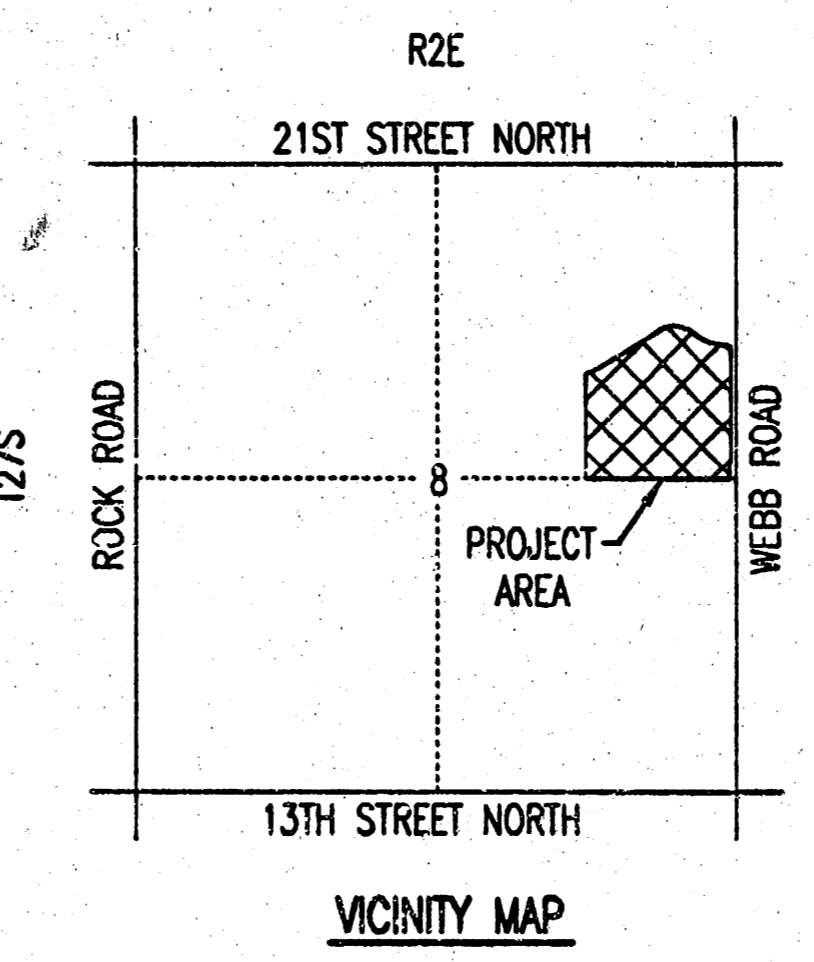
### AN ADDITION TO WICHITA, SEDGWICK COUNTY, KANSAS



- LEGEND**
- SET 1/2" REBAR WITH PEC CAP
  - WV WATER VALVE
  - FH FIRE HYDRANT
  - WATER LINE
  - SS SANITARY SEWER MANHOLE
  - ⑥ DRAINAGE BASIN (SEE BRADLEY FAIR 2ND ADDITION DRAINAGE PLAN & SUPPORTING CALCULATIONS)
  - BASIN BOUNDARY
  - MAJOR STORM WATER FLOW



- C.O.W. BM: City of Wichita Brass Disc, NE Cor. Conc. Vault 415' W. & Webb Rd. and 77.2' N. of 21st St. N. Elev. = 205.70
- BM #1: 6" Top center curb inlet W. side Webb Rd. 58 1/2' N. of Entrance to Eastminister Presbyterian Church Elev. = 193.28
- BM #2: 6" Top W. curb Webb Rd., 16 1/2' S. of E. of R.R. Tracks Elev. = 194.45
- BM #3: Chiseled 6" ctr. curb inlet on S. side Wilson Estates Parkway just W. of Webb Rd. Elev. = 196.83
- BM #4: Chiseled 6" T/C, S. curb Wilson Estates Parkway, adjacent to NW Cor. Lot 1, Block 2, Legacy Park Wilson Estates Add. Elev. = 196.41
- BM #5: Chiseled 6" N. side Sidewalk in Res. "B" (S. of Wilson Est. Parkway) mid way, 20 1/2' W. of P.C. Elev. = 204.30
- BM #6: B.M. Spike in N. face N. Pole - 2 pole KGE Structure on S. side Lot midway. Elev. = 200.32
- BM #7: R.R. Spike in N. face N. pole - 2 pole KGE Structure just N.W. of S.W. cor. Lot 1, Block 2, Legacy Park Wilson Estates Addition. Elev. = 200.70



THE AREA TO BE PLATTED AS WILSON ESTATES MEDICAL PARK HAS ALREADY BEEN INCLUDED IN A PREVIOUS DRAINAGE PLAN. SEE BRADLEY FAIR 2ND ADDITION DRAINAGE PLAN AND SUPPORTING CALCULATIONS FOR HYDROLOGY.

DRAINAGE FROM ALL LOTS SHALL BE DIRECTED AS SHOWN, IN ACCORDANCE WITH THE MASTER DRAINAGE PLAN. (SEE BRADLEY FAIR 2ND ADDITION DRAINAGE PLAN AND SUPPORTING CALCULATIONS.) DRAINAGE SHALL BE CONVEYED VIA DRIVES, FLUMES, DITCHES, PARKING LOTS, STORM SEWER OR OTHER APPROVED DRAINAGE DEVICES.

G:\2003\03320\DD 03320.DWG DRAINAGE 07-17-2003 09:10:13 am

S.E. Corner  
Wilson Farms Addition  
Point of Beginning  
for Parcel 2

S.W. Corner  
Lot 1, Block 1, Wilson  
Estates Medical Park  
Point of Beginning

S.E. Corner,  
NE 1/4, Sec. 8,  
T25S, R2E