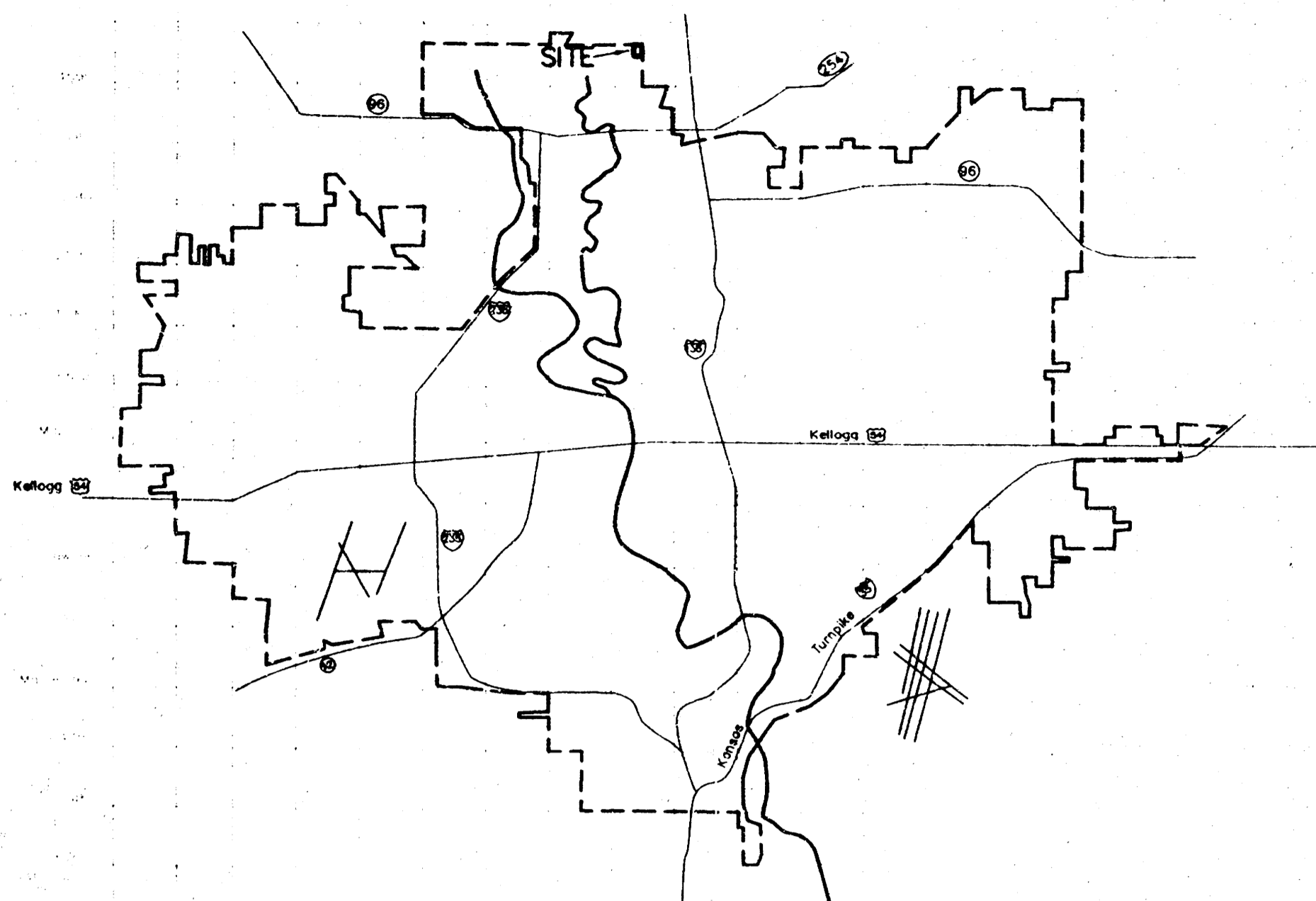


**DRAINAGE PLAN**  
for  
**WILSON MEADOW ADDITION**  
To Wichita, Sedgwick County, Kansas



VICINITY MAP



1" = 30'

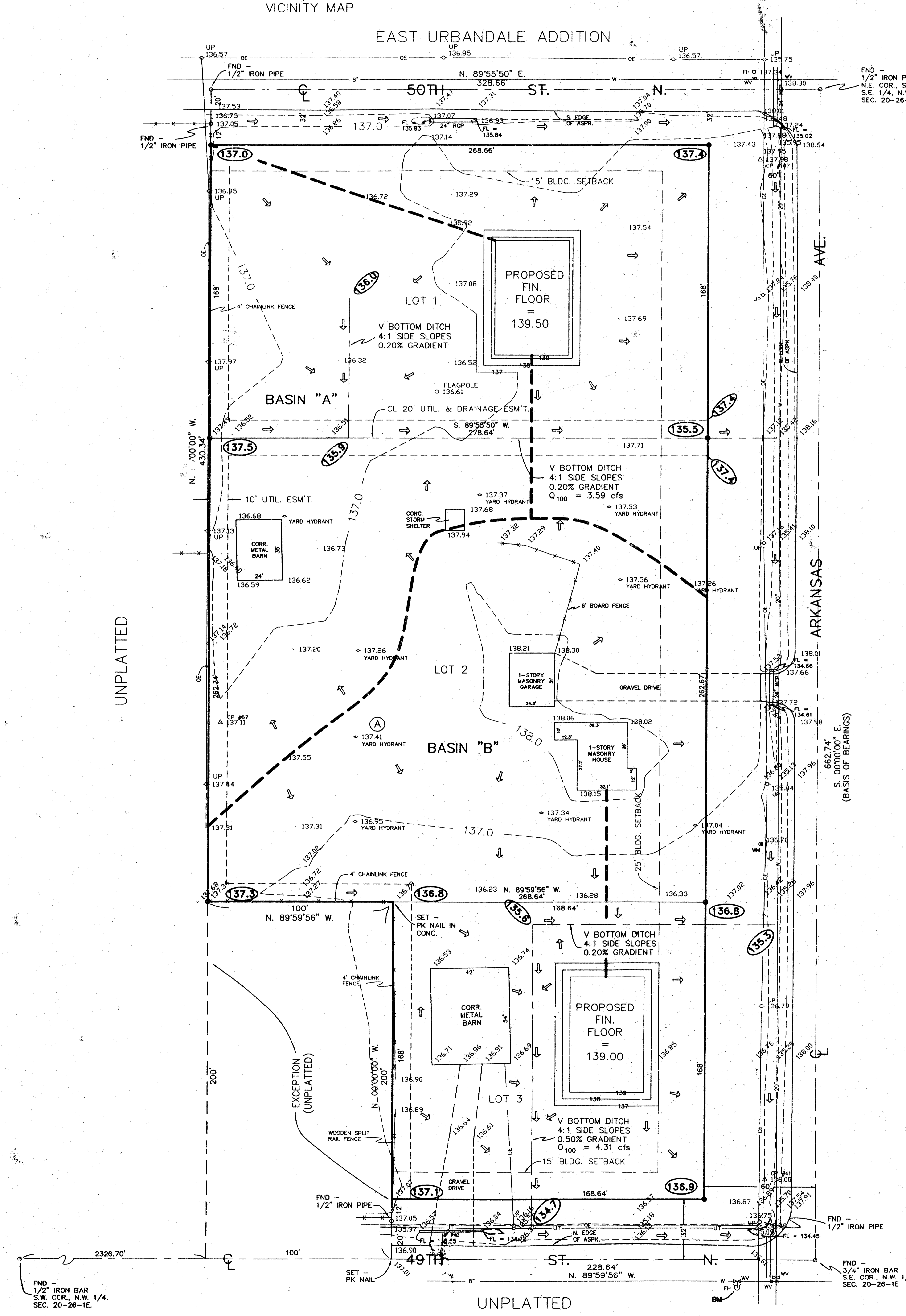
○ = 3/4" IRON PIPE W/MOEHRING CAP (SET)

**LEGEND**

- W = WATER MAIN
- WM = WATER METER
- WV = WATER VALVE
- FH = FIRE HYDRANT
- TSB = TELEPHONE SPLICE BOX
- UT = UNDERGROUND TELEPHONE
- UP = UTILITY POLE
- OE = OVERHEAD ELECTRIC
- UE = UNDERGROUND ELECTRIC

**LEGAL DESCRIPTION**

THE EAST 5 ACRES, EXCEPT THE SOUTH 200 FEET OF THE WEST 100 FEET THEREOF, IN THE SOUTH HALF OF THE S. 1/4 OF THE N.W. 1/4 IN SECTION 20, TOWNSHIP 26 SOUTH, RANGE 1 EAST OF THE 6TH P.M., SEDGWICK COUNTY, KANSAS.



**BENCHMARK**

RR SPIKE IN WEST FACE UTIL. POLE, EAST SIDE OF ARKANSAS AVE., & NORTH LINE OF 46TH ST. N. ELEV. = 138.06 CITY DATUM.

"O" IN OPEN, TOP OF FIRE HYDRANT S.W. CORNER OF 49TH ST. N. & ARKANSAS AVE. ELEV. = 137.89 CITY DATUM.

MOEHRING & ASSOCIATES  
CONSULTING ENGINEERS  
433 S. HYDRAULIC  
WICHITA, KANSAS  
263-8291

