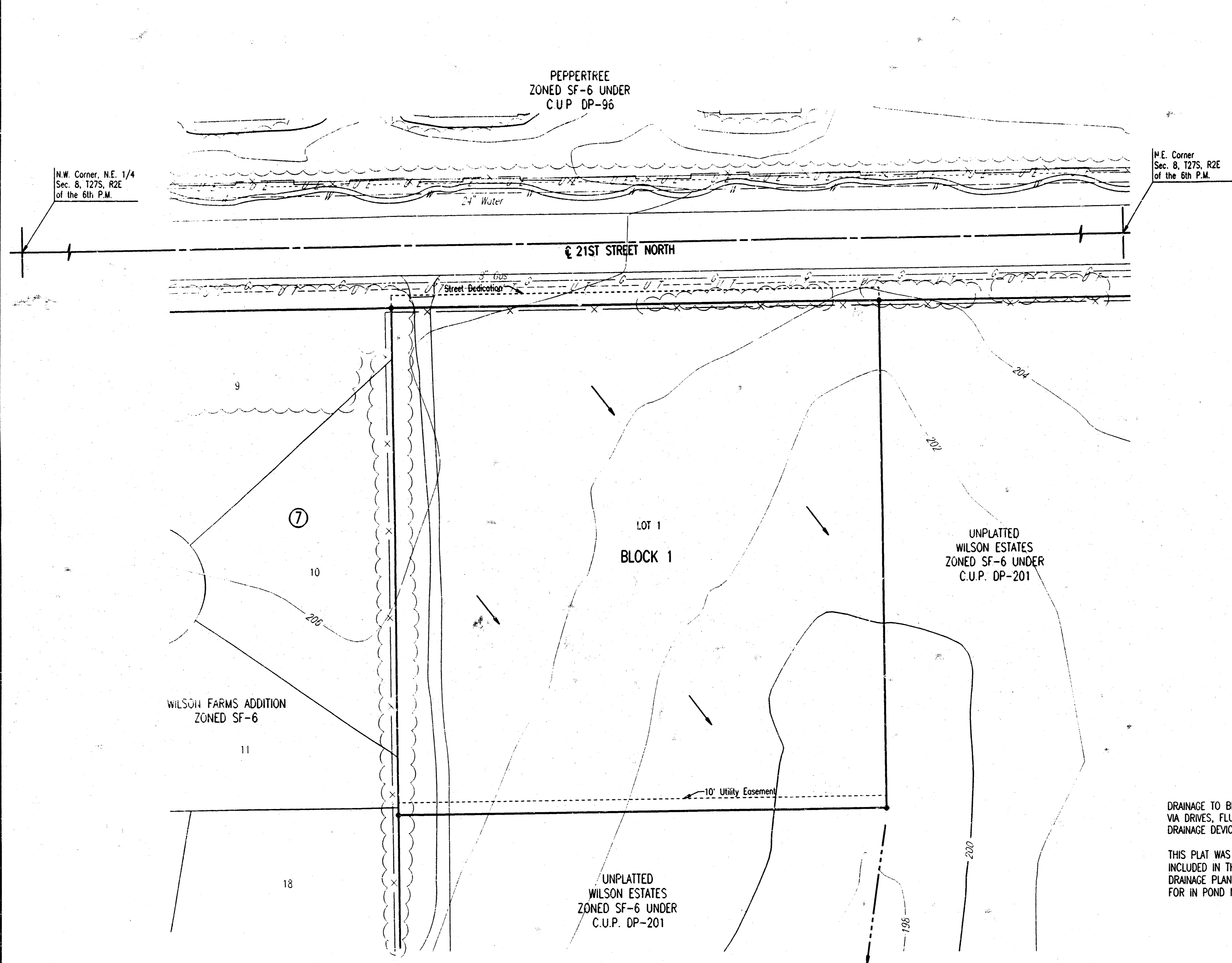


DRAINAGE PLAN
WILSON RETIREMENT ADDITION
 TO WICHITA, SEDGWICK COUNTY, KANSAS



N.W. Corner, N.E. 1/4
 Sec. 8, 127S, R2E
 of the 6th P.M.

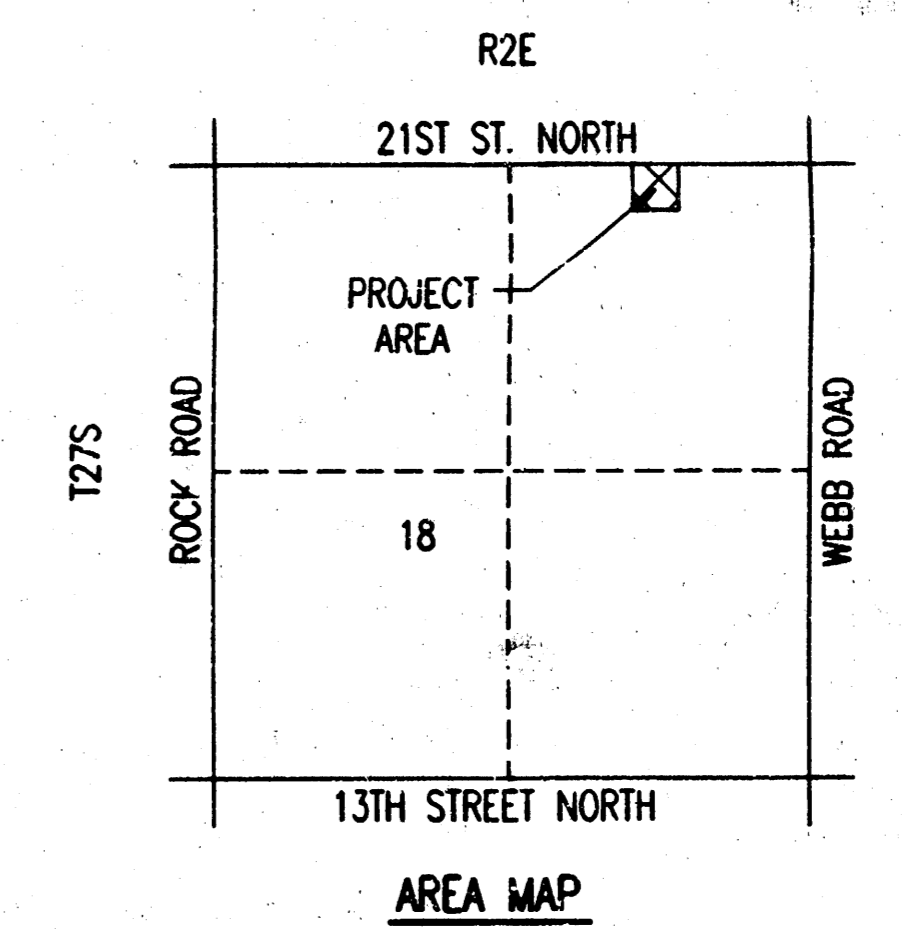
N.E. Corner
 Sec. 8, 127S, R2E
 of the 6th P.M.



SCALE: 1"=50'
 ● = IRON SET
 DATE: MARCH, 1996
 TOPOGRAPHY: APRIL, 1995

B.M. - CITY OF WICHITA BENCH MARK DISC 44 FEET SOUTH AND
 48 FEET EAST OF THE INTERSECTION OF CENTERLINES
 OF WEBB ROAD AND 21ST STREET NORTH
 ELEV.=205.238 CITY DATUM

FOR ADDITIONAL INFORMATION AND SETBACK LINES SEE C.U.P.
 DP-201 ON FILE AT THE WICHITA-SEDCWICK COUNTY METROPOLITAN
 AREA PLANNING DEPARTMENT, WICHITA, KANSAS.



DRAINAGE TO BE CONVEYED TO EITHER STREET RIGHT-OF-WAY OR SWALE TO SOUTH
 VIA DRIVES, FLUMES, PRIVATE STORM SEWERS, SWALES OR OTHER APPROVED
 DRAINAGE DEVICES.

THIS PLAT WAS INCLUDED AS PART OF BASIN 5 OF THE PRELIMINARY DRAINAGE STUDY
 INCLUDED IN THE DRADLEY FAIR 2ND ADDITION PLAN. AS SEEN IN THE B.F. 2ND
 DRAINAGE PLAN, DETENTION STORAGE FOR RUNOFF FROM THIS PLAT WILL BE PROVIDED
 FOR IN POND NO. 5, WHICH IS NOW PART OF WILSON FARMS ADDITION.

DSNR: DRC OPER: DAR SCALE: 1"=50.00
 O:\1995\98066\DRANPLN_03-02-1996 10:42:38 am