

**DRAINAGE PLAN**  
**WILSON RETIREMENT**  
**2ND ADDITION**  
 TO WICHITA, SEDGWICK COUNTY, KANSAS

N.W. Corner, N.E. 1/4  
 Sec. 8, T27S, R2E  
 of the 6th P.M.

N.E. Corner  
 Sec. 8, T27S, R2E  
 of the 6th P.M.  
 1/2" I.P. in Thumb

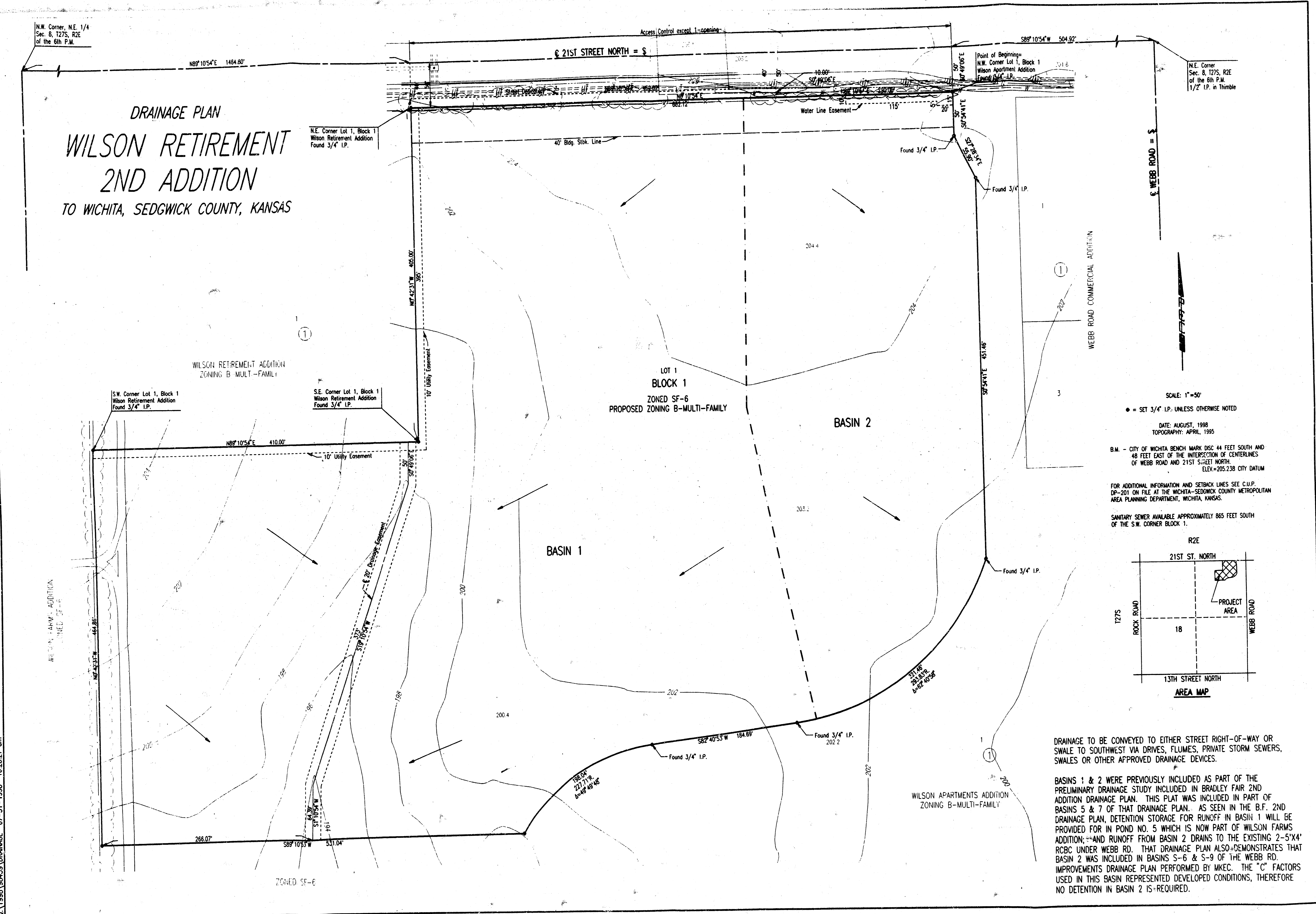
S.W. Corner Lot 1, Block 1  
 Wilson Retirement Addition  
 Found 3/4" I.P.

S.E. Corner Lot 1, Block 1  
 Wilson Retirement Addition  
 Found 3/4" I.P.

LOT 1  
 BLOCK 1  
 ZONED SF-6  
 PROPOSED ZONING B-MULTI-FAMILY

WILSON APARTMENTS ADDITION  
 ZONING B-MULTI-FAMILY

WILSON RETIREMENT ADDITION  
 ZONING B-MULTI-FAMILY



SCALE: 1"=50'

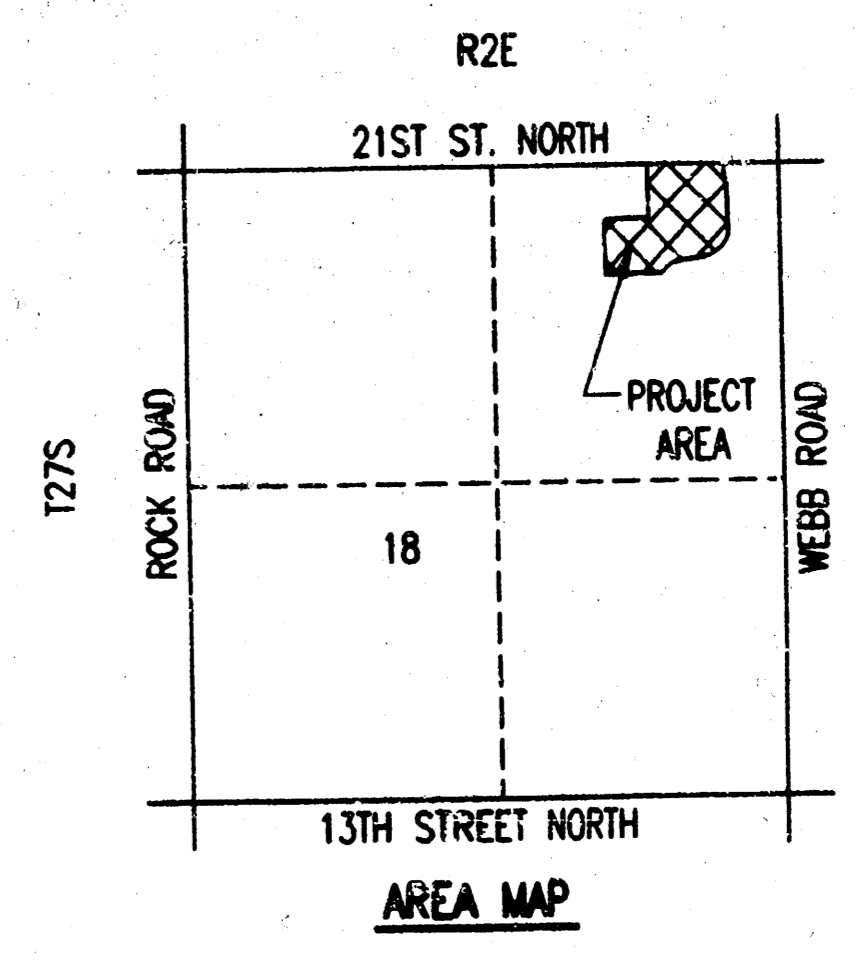
• = SET 3/4" I.P. UNLESS OTHERWISE NOTED

DATE: AUGUST, 1998  
 TOPOGRAPHY: APRIL, 1995

B.M. - CITY OF WICHITA BENCH MARK DISC 44 FEET SOUTH AND  
 48 FEET EAST OF THE INTERSECTION OF CENTERLINES  
 OF WEBB ROAD AND 21ST STREET NORTH.  
 ELEV.=205.238 CITY DATUM

FOR ADDITIONAL INFORMATION AND SETBACK LINES SEE C.U.P.  
 DP-201 ON FILE AT THE WICHITA-SEDGWICK COUNTY METROPOLITAN  
 AREA PLANNING DEPARTMENT, WICHITA, KANSAS.

SANITARY SEWER AVAILABLE APPROXIMATELY 865 FEET SOUTH  
 OF THE S.W. CORNER BLOCK 1.



DRAINAGE TO BE CONVEYED TO EITHER STREET RIGHT-OF-WAY OR  
 SWALE TO SOUTHWEST VIA DRIVES, FLUMES, PRIVATE STORM SEWERS,  
 SWALES OR OTHER APPROVED DRAINAGE DEVICES.

BASINS 1 & 2 WERE PREVIOUSLY INCLUDED AS PART OF THE  
 PRELIMINARY DRAINAGE STUDY INCLUDED IN BRADLEY FAIR 2ND  
 ADDITION DRAINAGE PLAN. THIS PLAT WAS INCLUDED IN PART OF  
 BASINS 5 & 7 OF THAT DRAINAGE PLAN. AS SEEN IN THE B.F. 2ND  
 DRAINAGE PLAN, DETENTION STORAGE FOR RUNOFF IN BASIN 1 WILL BE  
 PROVIDED FOR IN POND NO. 5 WHICH IS NOW PART OF WILSON FARMS  
 ADDITION; AND RUNOFF FROM BASIN 2 DRAINS TO THE EXISTING 2'-5'X4'  
 RCBC UNDER WEBB RD. THAT DRAINAGE PLAN ALSO DEMONSTRATES THAT  
 BASIN 2 WAS INCLUDED IN BASINS 5-6 & 5-9 OF THE WEBB RD.  
 IMPROVEMENTS DRAINAGE PLAN PERFORMED BY MKCC. THE "C" FACTORS  
 USED IN THIS BASIN REPRESENTED DEVELOPED CONDITIONS, THEREFORE  
 NO DETENTION IN BASIN 2 IS REQUIRED.

DSHR, KER, OPER. SCALE: 1"=50.00  
 01/1998/98459 DRAINAGE 07-31-1998 10:28:27 am