

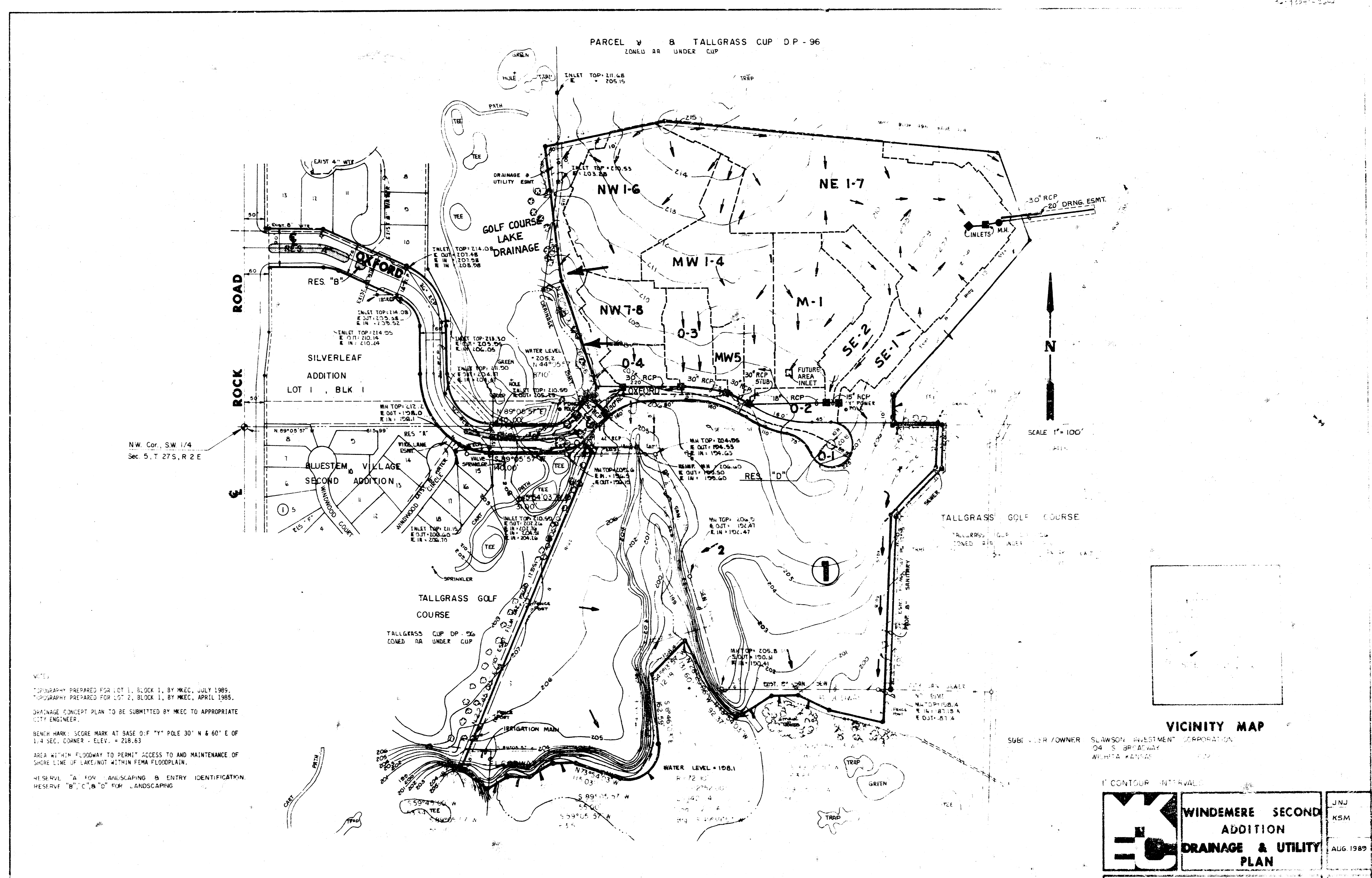
WINDEMERE 2ND ADDITION (WINDEMERE APARTMENTS)

Page 2

DRAINAGE AREA	AREA ACRES	AREA ACCUM.	C <sub>2</sub>	C <sub>100</sub>	T <sub>c</sub> (Min)	I <sub>2</sub> (In/Hr)	I <sub>100</sub> (In/Hr)	Q <sub>2</sub> (CFS)	Q <sub>100</sub> (CFS)	PIPE SIZE	PIPE SLOPE	INLETS
AREA NE 0-2 Multi-Family Apartments 'D' Soils 75% Impervious	0.70	0.70	0.86	15	15	3.83	7.37	1.9	4.4			1 L(1)=5'
		4.61	0.72	0.86	16	15	3.72	7.37	12.3	30" RCP	0.5%	
AREA 0-4 Multi-Family Apartments 'D' Soils 75% Impervious	0.38	0.70	0.86	15	15	3.83	7.37	1.0	2.4			1 L(1)=5'
		4.99	0.72	0.86	16	15	3.83	7.37	13.8	30" RCP	0.6%	
AREA 0-5 Meadow North 1/2 Oxford 96% Impervious	0.31	0.87	0.89	15	15	3.83	7.37	1.0	2.0			1 L(1)=5' (Sump)
AREA 0-6 (0+2) All South 1/2 Oxford 96% Impervious	0.55	0.87	0.89	15	15	3.83	7.37	1.8	3.6			1 L(1)=5' (Sump)
AREA NW 1-6 Multi-Family Apartments 'D' Soils 75% Impervious	2.10	0.70	0.86	16	15	3.72	7.37	5.5	13.3	To Lake (Future 24" RCP & Sump Inlets)		
AREA NW 7-8 Multi-Family Apartments 'D' Soils 75% Impervious	0.64	0.70	0.86	15	15	3.83	7.37	1.7	4.1	To Lake (Future 15" RCP & Sump Inlets)		
Structure Under Oxford & Golf Course Lake	15.95	0.45	0.65	44	30	2.11	5.40	15.1	56.0	36" RCP	0.7%	W/Weir Drop Inlet

WINDEMERE 2ND ADDITION (WINDEMERE APARTMENTS)

DRAINAGE AREA	AREA ACRES	AREA ACCUM.	C <sub>2</sub>	C <sub>100</sub>	T <sub>c</sub> (Min)	I <sub>2</sub> (In/Hr)	I <sub>100</sub> (In/Hr)	Q <sub>2</sub> (CFS)	Q <sub>100</sub> (CFS)	PIPE SIZE	PIPE SLOPE	INLETS	
AREA NE 1-7 Multi-Family Apartments 'D' Soils 75% Impervious	4.09	0.70	0.86	18	15	3.51	7.37	10.1	25.9	30" RCP	0.5%	2 L(1)=10' (Sump) or Equiv.	
AREA SE-1 Multi-Family Apartments 'D' Soils 75% Impervious	0.40	0.70	0.86	20	15	3.33	7.37	0.3	2.5	15" RCP	0.5%	1 L(1)=5'	
AREA SE-2 Multi-Family Apartments 'D' Soils 75% Impervious	0.79	0.70	0.86	19	15	3.42	7.37	1.9	5.0			1 L(1)=5'	
		1.19	0.70	0.86	20	15	3.33	7.37	2.8	18" RCP	0.5%		
AREA M-1 Multi-Family Apartments 'D' Soils 75% Impervious	1.31	0.70	0.86	16	15	3.72	7.37	3.4	8.3			(Future Area Inlet)	
AREA MW 1-4 Multi-Family Apartments 'D' Soils 75% Impervious	1.81	0.70	0.86	15	15	3.83	7.37	4.9	11.5			(Future Inlets)	
		3.12	0.70	0.86	16	15	3.72	7.37	8.1	19.8	30" RCP	0.5%	(Stub-Future Drainage)
AREA 0-2 RCP to W. Oxford 96% Impervious	0.52	0.87	0.89	15	15	3.83	7.37	1.7	3.4			1 L(1)=5' (With Above Stub)	
		3.64	0.72	0.86	16	15	3.72	7.37	9.7	23.1	30" RCP	0.5%	
AREA MW-5 Multi-Family Apartments 'D' Soils 75% Impervious	0.27	0.70	0.86	15	15	3.83	7.37	0.7	1.7			1 L(1)=5'	
		3.91	0.72	0.86	16	15	3.72	7.37	10.5	24.8	30" RCP	0.5%	



NOTES:  
 1. TOPOGRAPHY PREPARED FOR LOT 1, BLOCK 1, BY MKEC, JULY 1989.  
 2. TOPOGRAPHY PREPARED FOR LOT 2, BLOCK 1, BY MKEC, APRIL 1985.  
 3. DRAINAGE CONCEPT PLAN TO BE SUBMITTED BY MKEC TO APPROPRIATE CITY ENGINEER.  
 4. BENCH MARK: SCORE MARK AT BASE OF "Y" POLE 30' N & 60' E OF 1/4 SEC. CORNER - ELEV. = 218.63  
 5. AREA WITHIN FLOODWAY TO PERMIT ACCESS TO AND MAINTENANCE OF SHORE LINE OF LAKE/NOT WITHIN FEMA FLOODPLAIN.  
 6. HEREIN "A" FOR LANDSCAPING, "B" ENTRY IDENTIFICATION, RESERVE "C", "D" FOR LANDSCAPING