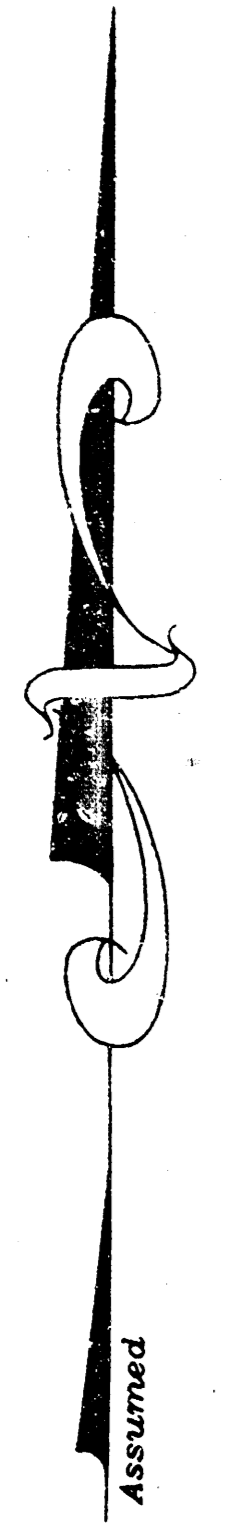


Central Ave.

Drainage Plan for Winterset Plaza

an addition to
Wichita, Sedgwick County, Kansas
January, 1994



1" = 50'

Note:
Area A₂ to be
drained out future
drives.

Owner/Developer:

Robert G. Bundy & Phillip A. Bundy
c/o Bundy and Associates
6235 West Kelliog
Wichita, Kansas 67209

Suburban West State Bank
PO Box 318
Goddard, Kansas 67052

Zoning:

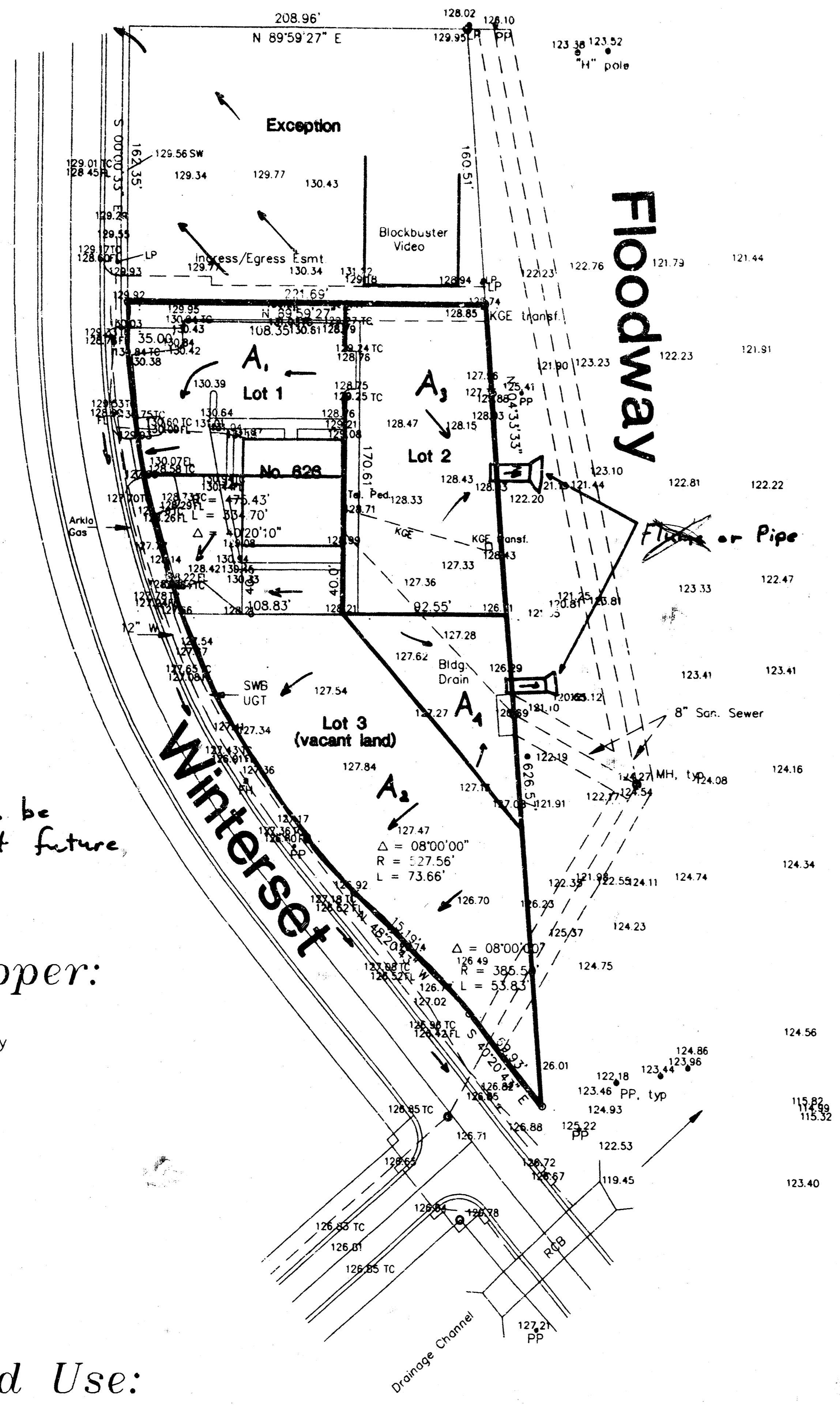
Commercial

Existing Land Use:

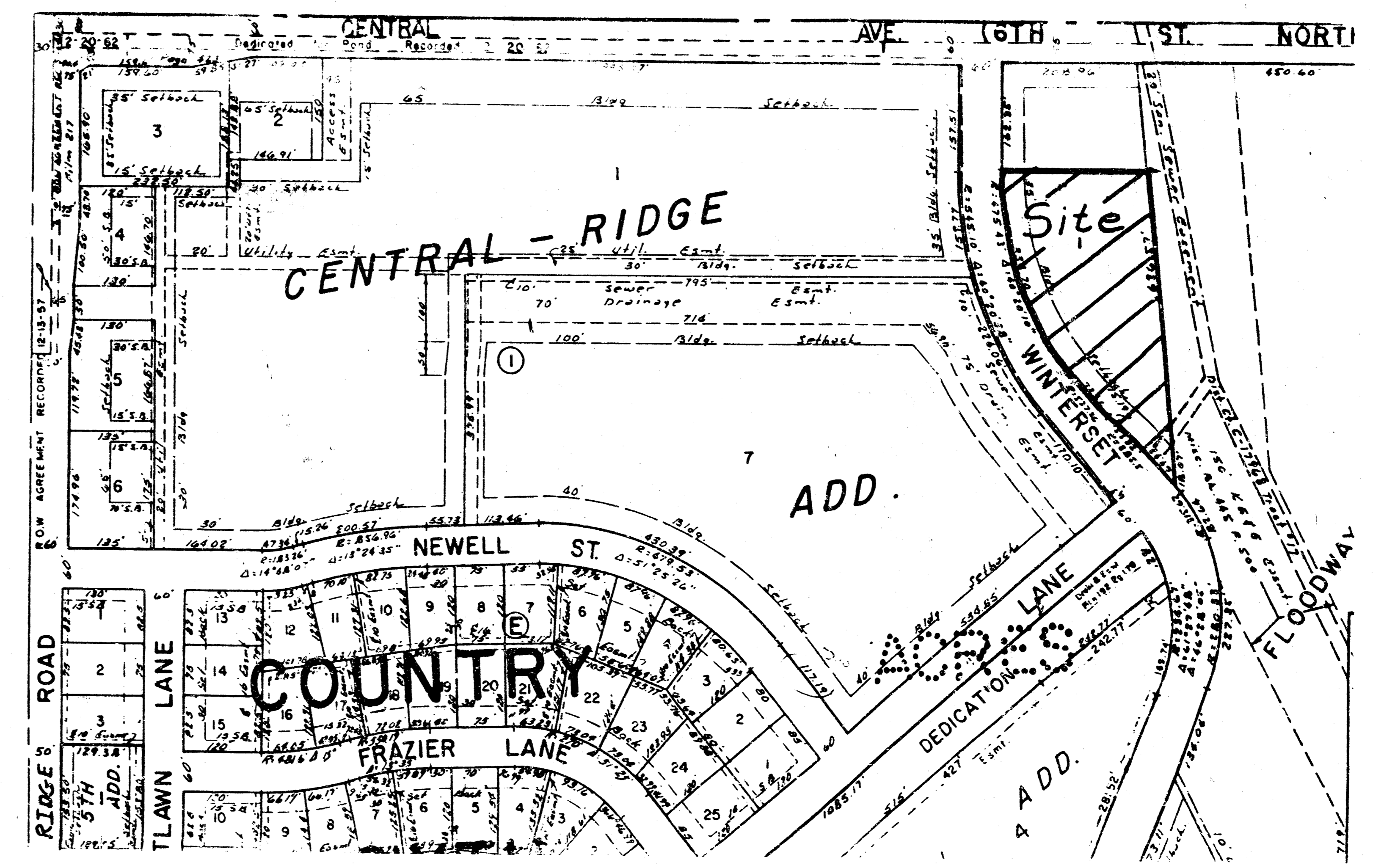
Commercial

Proposed Land Use:

Commercial



Bench Mark:
60d. Spike in West Face,
High Line Pole
93' East of Centerline
Wayside and Winterset
Elevation 122.92, City Datum



Vicinity Map
1" = 200' +/-

DRAINAGE DATA

C = 0.85 Tc = 15 min.
I(5) = 4.61 in/hr I(100) = 7.36 in/hr

Area	Acreage	Q(5)	Q(100)
A1	0.55	2.2	3.5
A2	0.70	2.7	4.4
A3	0.37	1.5	2.7
A4	0.28	0.8	1.3

S. E. Anderson PE/LS
Consulting Engineer
Whitewater, Kansas
March, 1994