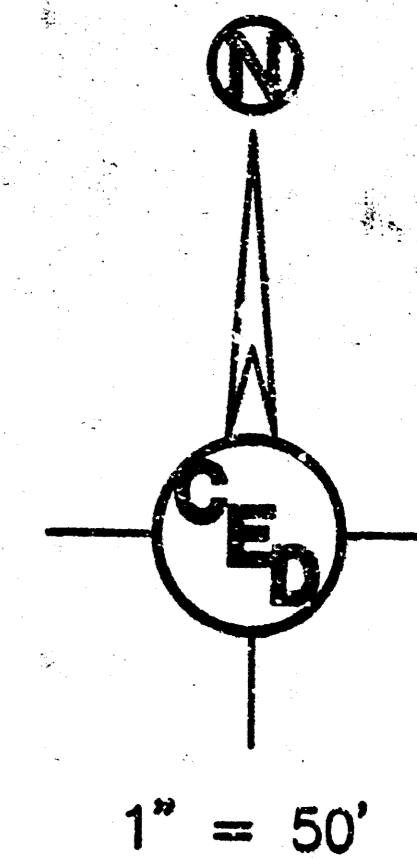


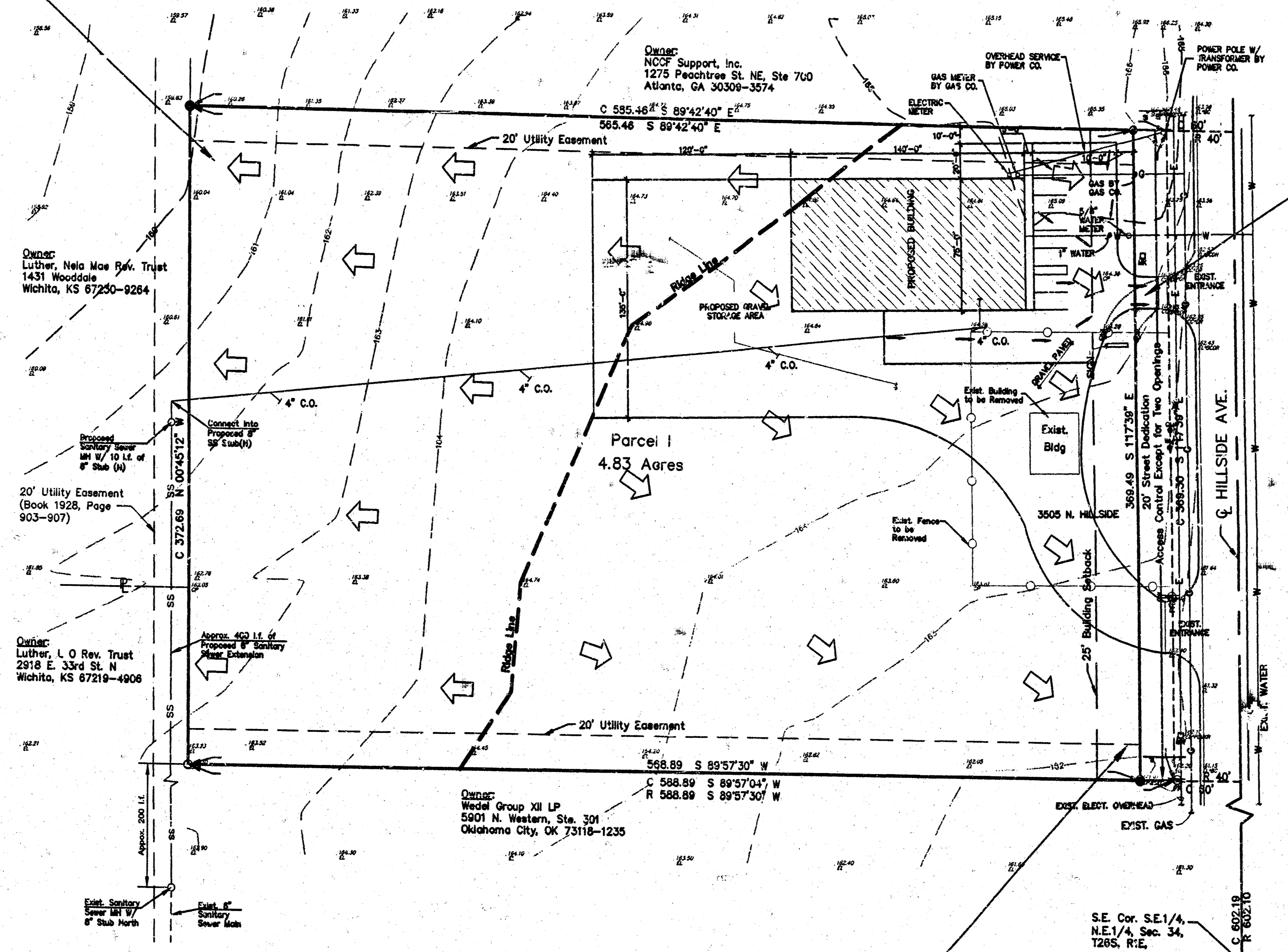
**DRAINAGE PLAN FOR
'WIREMEN ACRES'
SEDGWICK COUNTY, KANSAS
IN THE NE 1/4 OF SECTION 34, T26S, R1E OF THE 6TH P.M.**



DRAINAGE DATA
Area=2.2 acres
SCS Soil Type B
Farnum Loam
C = 0.25
Tc = 15 min.
i 5=4.62"/hr.
Q 5=2.5 cfs

DRAINAGE DATA
Area=0.2 acres
SCS Soil Type B
Farnum Loam
C = 0.87
Tc = 15 min.
i 5=4.62"/hr.
Q 5=0.8 cfs

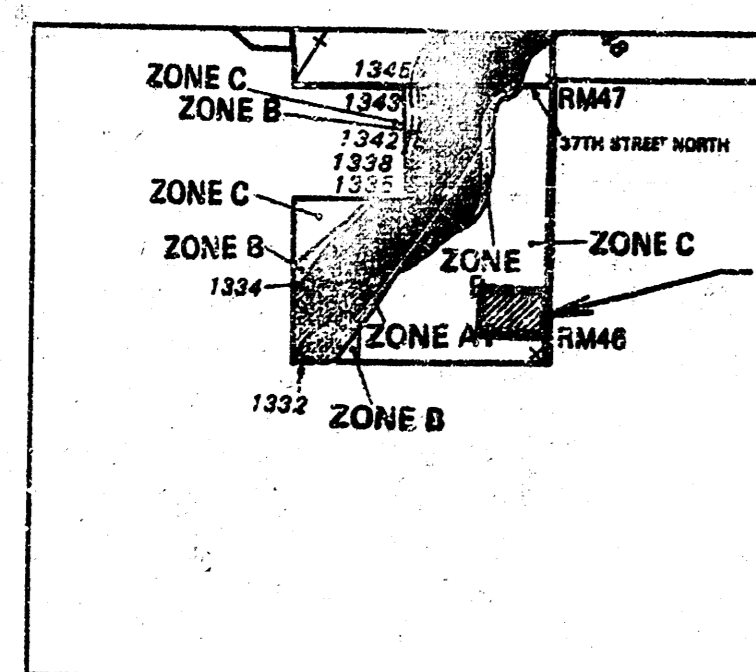
PROPOSED SURFACE DRAINAGE:
Surface drainage will continue to drain consistent with the existing contours depicted on this topographic map. Regrading will occur as required around the perimeter of the proposed building. However, regrading of the entire lot is not proposed and developed lot drainage will be as reflected by existing contours.



- LEGEND**
- - 5/8" rebar w/ "ARMSTRONG" cap set
 - - 5/8" rebar w/ "PEC" cap found
 - G — GAS LINE
 - SS — SANITARY SEWER
 - W — WATER MAIN
 - E — ELECTRIC LINE
 - — Sign
 - ⊠ — Transformer
 - ⊞ — Pipeline Marker
 - ⊕ — Power Pole
 - GW — Guy Wire
 - GP — Guy Pole
 - GM — Gas Meter
 - WM — Water Meter
 - — Existing Drainage Flow
 - - - Proposed Drainage Flow

FLOOD ZONE MAP

Sec. 34, T26S, R1E



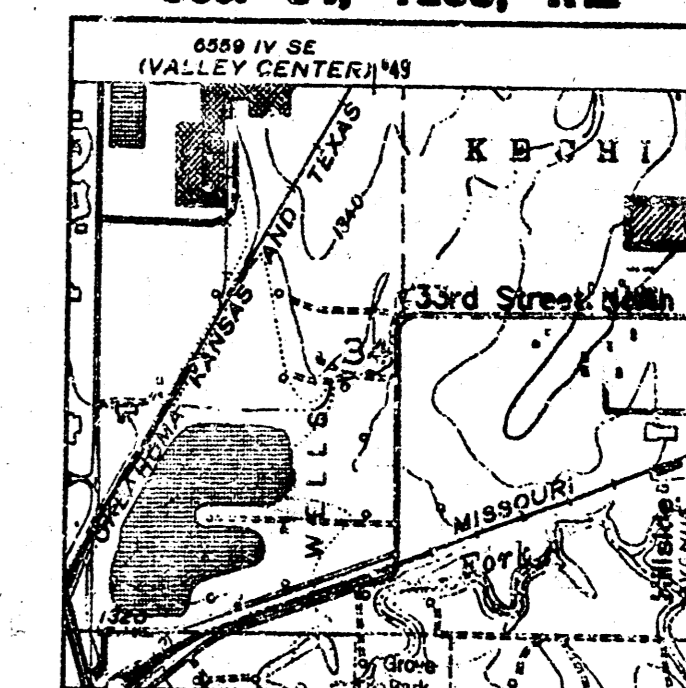
SCALE: 1" = 2,000'

FLOOD ZONE:
Subject property is in Zone C, as shown on Federal Emergency Management Agency (FEMA) Flood Insurance Rate Map (FIRM) for Sedgwick County, Kansas, Community Panel Number 200321 0150 A, effective June 3, 1986.

DRAINAGE DATA
Area=2.4 acres
SCS Soil Type B
Farnum Loam
C = 0.25
Tc = 15 min.
i 5=4.62"/hr.
Q 5=2.8 cfs

VICINITY MAP

Sec. 34, T26S, R1E

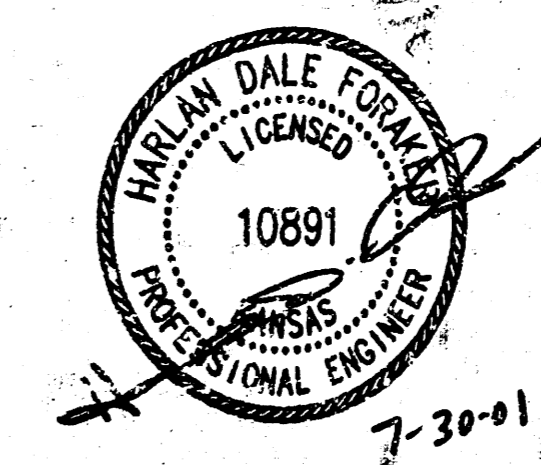


WICHITA EAST QUADRANGLE
7.5 Minute Series
SCALE: 1" = 2,000'

SURVEY DISCLAIMER:
TOPOGRAPHIC SURVEY AND CONTOUR MAP USED IN PREPARING PLANS WAS PROVIDED BY ARMSTRONG LAND SURVEY, P.A., 250 MATHEWSON, WICHITA, KS, (316)263-0082. ENGINEER DOES NOT GUARANTEE SURVEY ELEVATIONS FOR ACCURACY. CONTRACTOR SHALL VERIFY ELEVATIONS AND NOTIFY ENGINEER OF ANY DISCREPANCIES.

DRAINAGE PLAN PREPARED BY:
CERTIFIED ENGINEERING DESIGN, P.A.
810 WEST DOUGLAS, SUITE C
WICHITA, KANSAS 67203
PH: (316) 262-8808
FAX: (316) 262-1689

SHEET	1
TOTAL	1



ARMSTRONG LAND SURVEY, P.A.
250 MatheWson
Wichita, KS 67214
Ph: (316) 263-0082
FAX: (316) 262-1689