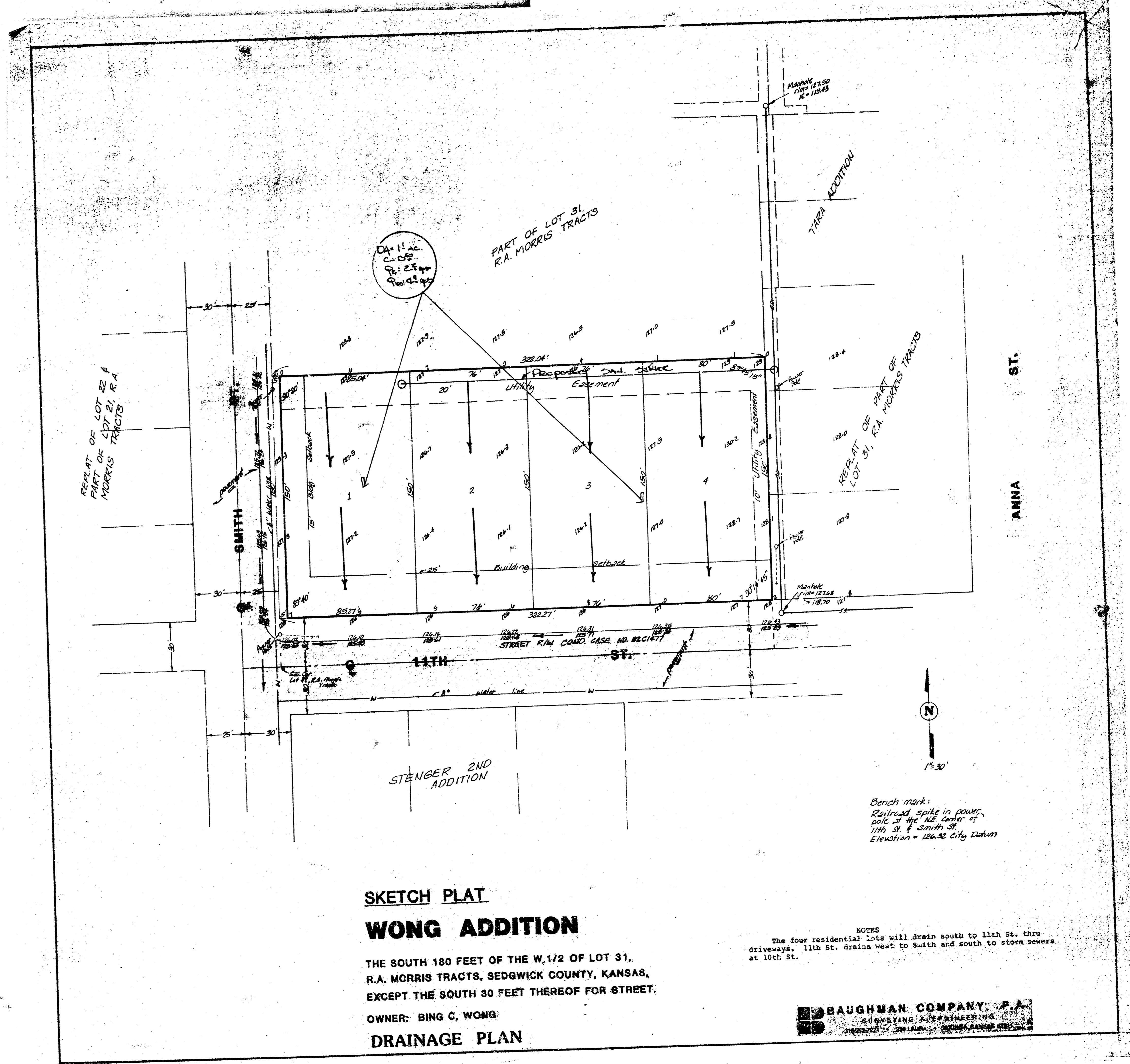


WONG ADDITION  
(Drainage)



REPLAT OF LOT 22 &  
PART OF LOT 21, R.A.  
MORRIS TRACTS

PART OF LOT 31,  
R.A. MORRIS TRACTS

WONG ADDITION

REPLAT OF PART OF  
LOT 31, R.A. MORRIS TRACTS

ANNA ST.

STENGER 2ND  
ADDITION

**SKETCH PLAT  
WONG ADDITION**

THE SOUTH 180 FEET OF THE W. 1/2 OF LOT 31,  
R.A. MORRIS TRACTS, SEDGWICK COUNTY, KANSAS,  
EXCEPT THE SOUTH 30 FEET THEREOF FOR STREET.

OWNER: BING C. WONG  
**DRAINAGE PLAN**

Bench mark:  
Railroad spike in power  
poles at the NE corner of  
11th St. & Smith St.  
Elevation = 126.32 City Datum

NOTES  
The four residential lots will drain south to 11th St. thru  
driveways. 11th St. drains west to Smith and south to storm sewers  
at 10th St.

**BAUGHMAN COMPANY, P.A.**  
SURVEYING & ENGINEERING