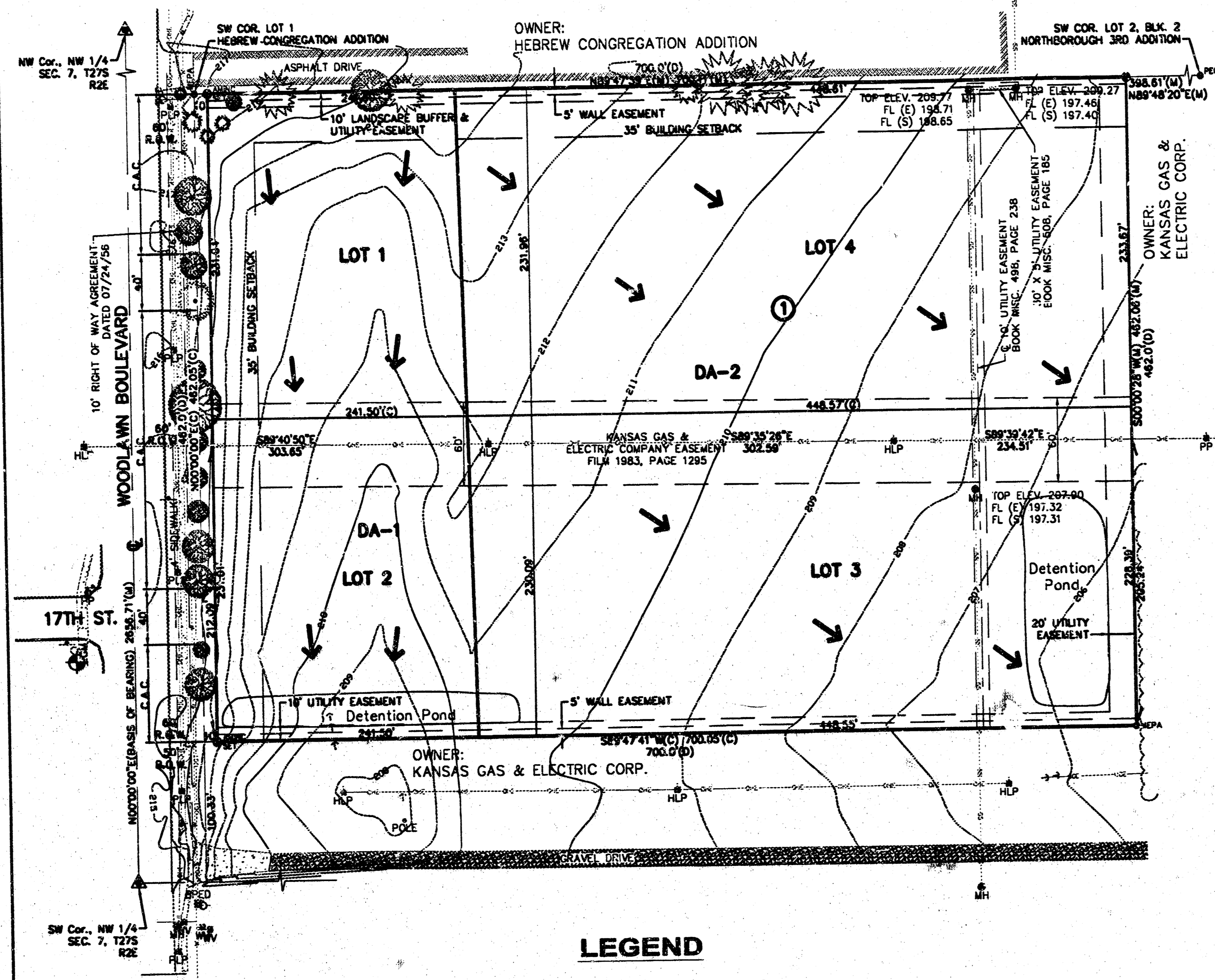


WOODBOROUGH ADDITION WICHITA, SEDGWICK COUNTY, KANSAS DRAINAGE PLAN



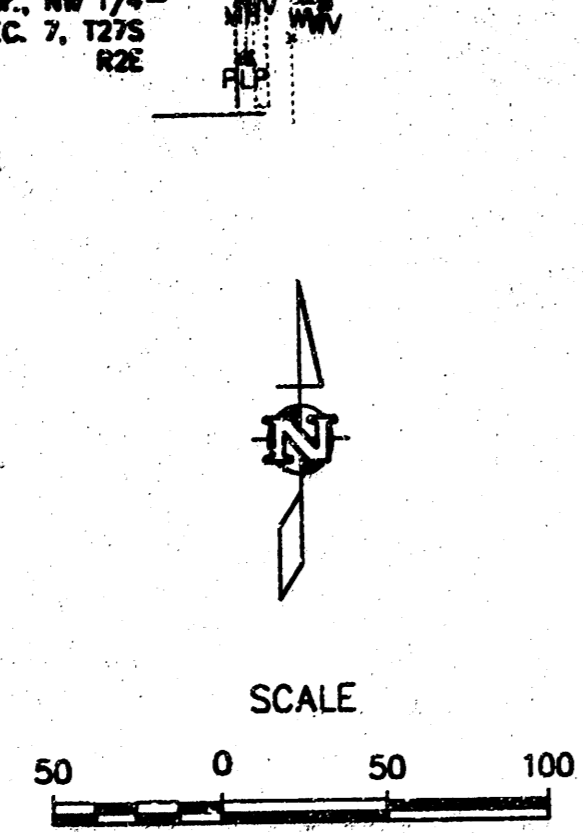
Area #	Area (ac)	C	I ₁₀₀	Undeveloped		Developed	
				Q ₁ (cfs)	Q ₁₀₀ (cfs)	C ₁ (cfs)	Q ₁₀₀ (cfs)
1	2.04	4.56	7.37	2.3	4.5	7.9	12.8
2	5.28	4.56	7.37	6.0	11.7	20.5	33.1
TOTAL	7.32*			8.3	16.2	28.4	45.9

NOTES:
 1. Determination of Q's was made using the rational method.
 2. c's used were as follows:

5yr frequency	Undeveloped	Developed
	.25	.85
100 yr frequency	.30	.85

Notes:
 1. Approximately 27,000 cubic feet of storage is required.
 2. Detention ponds to be designed and constructed at time of site development.
 3. Alternately, drainage may be connected to city storm sewer in woodlawn if available.

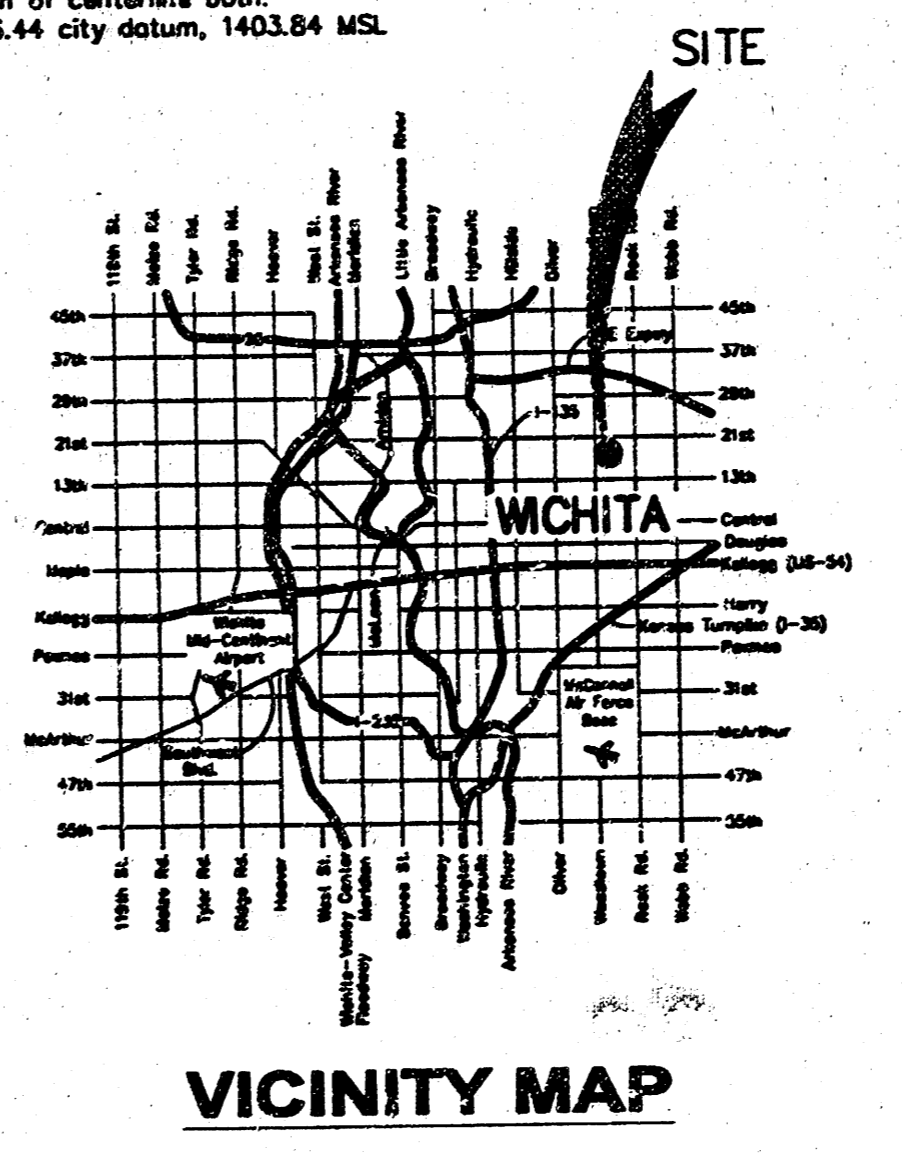
E:\projects\020\02075\02075-drainage.dwg Thu Feb 12 07:56:31 2004 Steve Schmidt



LEGEND

- | | | |
|---|---------------------|-------------------------|
| (C) = Calculated | = Asphalt | = Pole |
| (D) = Described | = Bell Pedestal | = Power Light Pole |
| (M) = Measured | = Cedar | = Power Pole |
| C.A.C. = Complete Access Control | = Concrete | = Sanitary Sewer |
| R.O.W. = Right-of-Way | = Contour Elevation | = Shrub |
| MEPA = 5/8" Rebar with MEPA cap (found) | = Fire Hydrant | = Sign |
| PEC = 1/2" Rebar with PEC cap (found) | = Gas Meter | = Tree |
| IP = 1" Iron Pipe (found) | = Crowl | = Underground Telephone |
| 5/8" = 5/8" Rebar (found) | = Guy Anchor | = Water |
| AMNC SET = 5/8" Rebar AMNC CLS #104 (set) | = High Line Power | = Manhole |
| SC = Section Corner | = Overhead Electric | = Water Valve |

BENCHMARK
 Woodlawn and 17th St. North
 C.O.W. Benchmark, 43' West and
 37' South of centerline both.
 Elev. 218.44 city datum, 140.84 MSL.



FILENAME: 02075-drainage

A.M. CONSULTING
ENGINEERING SERVICES
 142 N. Emporia - Wichita, KS 67202
 316/261-3110 Fax: 316/261-3110