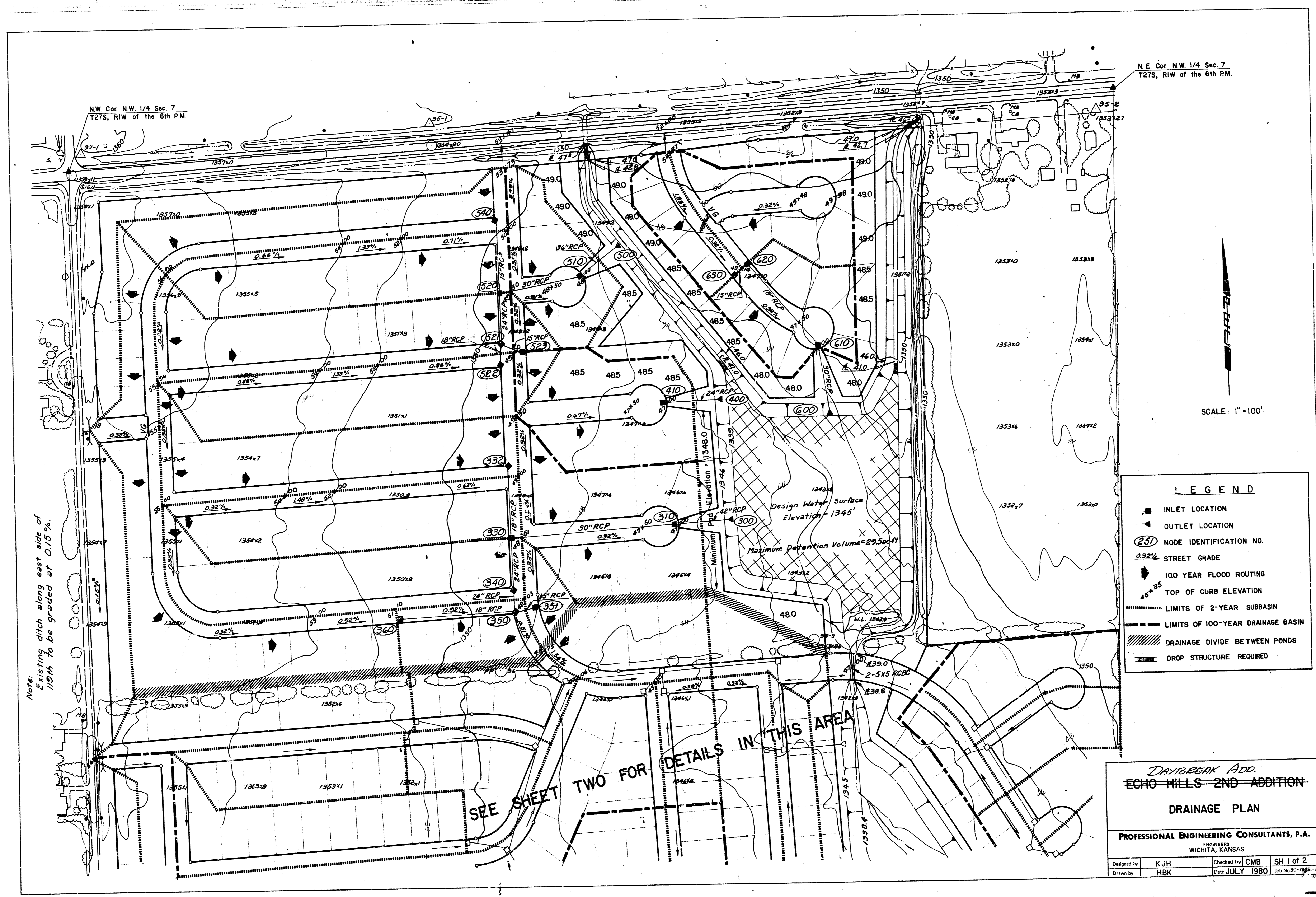


WOODBRIDGE ADDITION  
(See Daybreak Addition  
Drainage)

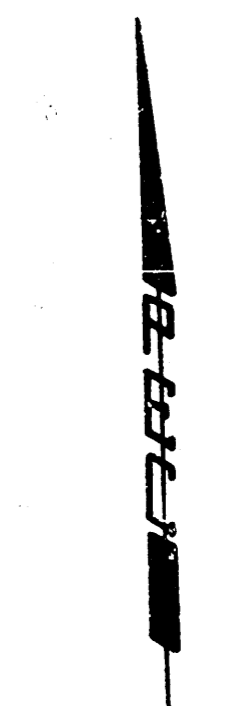


Note:  
Existing ditch along east side of  
10th to be graded at 0.15%.

SEE SHEET TWO FOR  
DETAILS IN THIS AREA

N.E. Cor. N.W. 1/4 Sec. 7,  
T27S, R1W of the 6th P.M.

N.W. Cor. N.W. 1/4 Sec. 7,  
T27S, R1W of the 6th P.M.



SCALE: 1" = 100'

**LEGEND**

- INLET LOCATION
- ◄ OUTLET LOCATION
- (25) NODE IDENTIFICATION NO.
- 0.32% STREET GRADE
- 100 YEAR FLOOD ROUTING
- TOP OF CURB ELEVATION
- LIMITS OF 2-YEAR SUBBASIN
- LIMITS OF 100-YEAR DRAINAGE BASIN
- DRAINAGE DIVIDE BETWEEN PONDS
- DROP STRUCTURE REQUIRED

**DAYBREAK ADD.  
ECHO HILLS 2ND ADDITION  
DRAINAGE PLAN**

PROFESSIONAL ENGINEERING CONSULTANTS, P.A.  
ENGINEERS  
WICHITA, KANSAS

Designed by	KJH	Checked by	CMB	SH 1 of 2
Drawn by	HBK	Date	JULY 1980	Job No. 30-7928-1120