

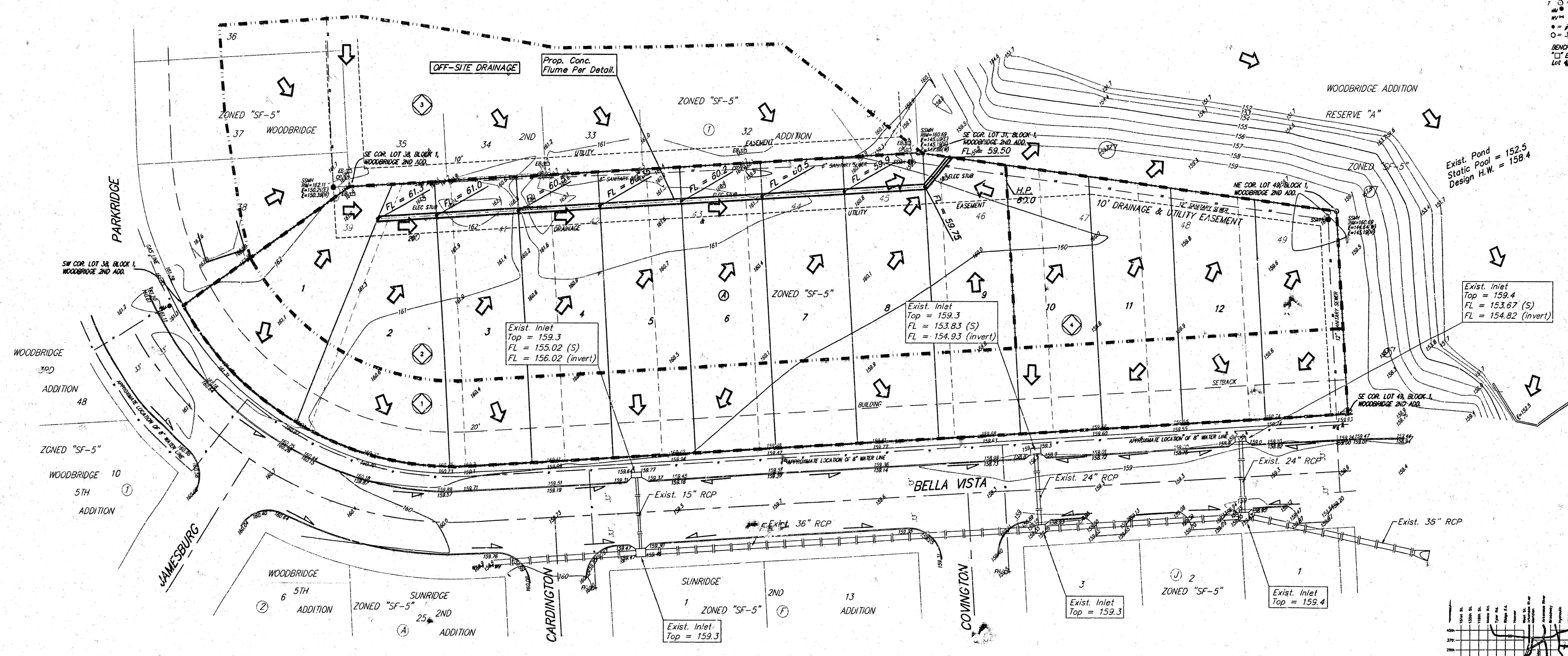
# DRAINAGE PLAN WOODBRIDGE 7TH ADDITION WICHITA, SEDGWICK COUNTY, KANSAS

0 30 60

DATE OF PREPARATION: FEBRUARY 25, 2002  
DATE OF TOPOGRAPHY: FEBRUARY 19, 2002  
CONTOUR INTERVALS = 1 FOOT

CP = Cable TV Pedestal  
 EB = Electric Box  
 FH = Fire Hydrant  
 SSW = Sanitary Sewer Manhole  
 SWB = Southwestern Bell Pedestal  
 T = Tree  
 WM = Water Meter  
 WVA = Water Valve  
 ● = #4 REBAR W/ "BAUGHMAN" CR  
 ○ = 3/4" IRON (FOUND)

BENCHMARK:  
 □ East and RCB 1102, East of Lot 48 North side Delta Vets.



Exist. Pond  
 Static Pool = 152.5  
 Design H.W. = 158.4

Exist. Inlet  
 Top = 159.4  
 FL = 153.67 (S)  
 FL = 154.82 (invert)

Exist. Inlet  
 Top = 159.3  
 FL = 155.02 (S)  
 FL = 156.02 (invert)

Exist. Inlet  
 Top = 159.3  
 FL = 153.83 (S)  
 FL = 154.93 (invert)

Exist. Inlet  
 Top = 159.3

Exist. Inlet  
 Top = 159.4

MINIMUM BUILDING PAD ELEVATIONS FOR LOWEST OPENING TO THE STRUCTURES

LOT	BLOCK	ELEVATION	
		City Datum	160.6
1-13	A		160.6

Basin No.	Area acres	Runoff Coefficient		Peak Flowrate	
		2-y	100-y	2-y	100-y
1	0.83	0.52	0.67	1.7	4.1
2	1.16	0.52	0.67	2.3	5.7
3	0.75	0.52	0.67	1.5	3.7
4	0.41	0.52	0.67	0.8	2.0

