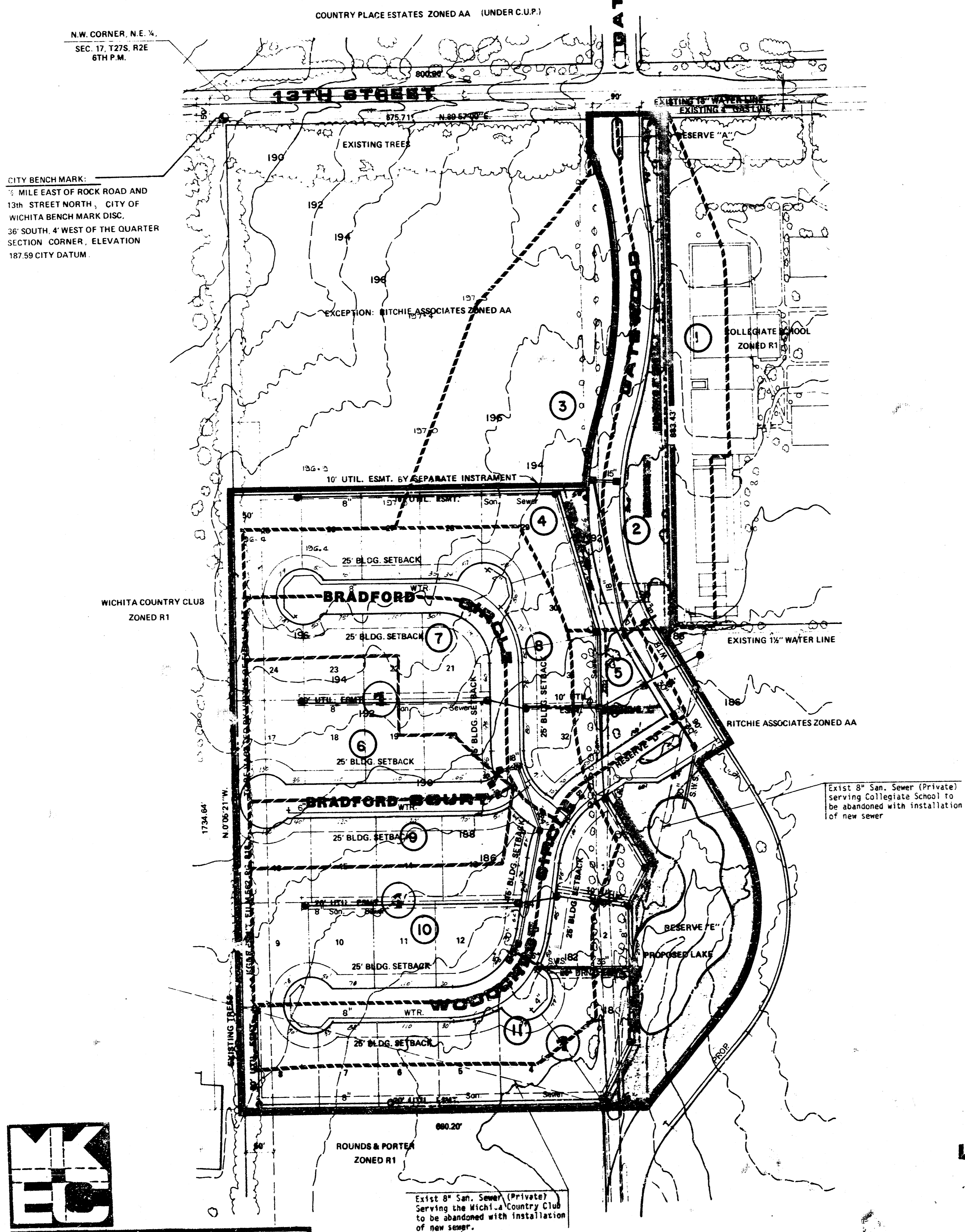
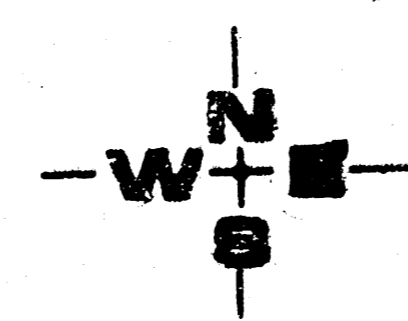
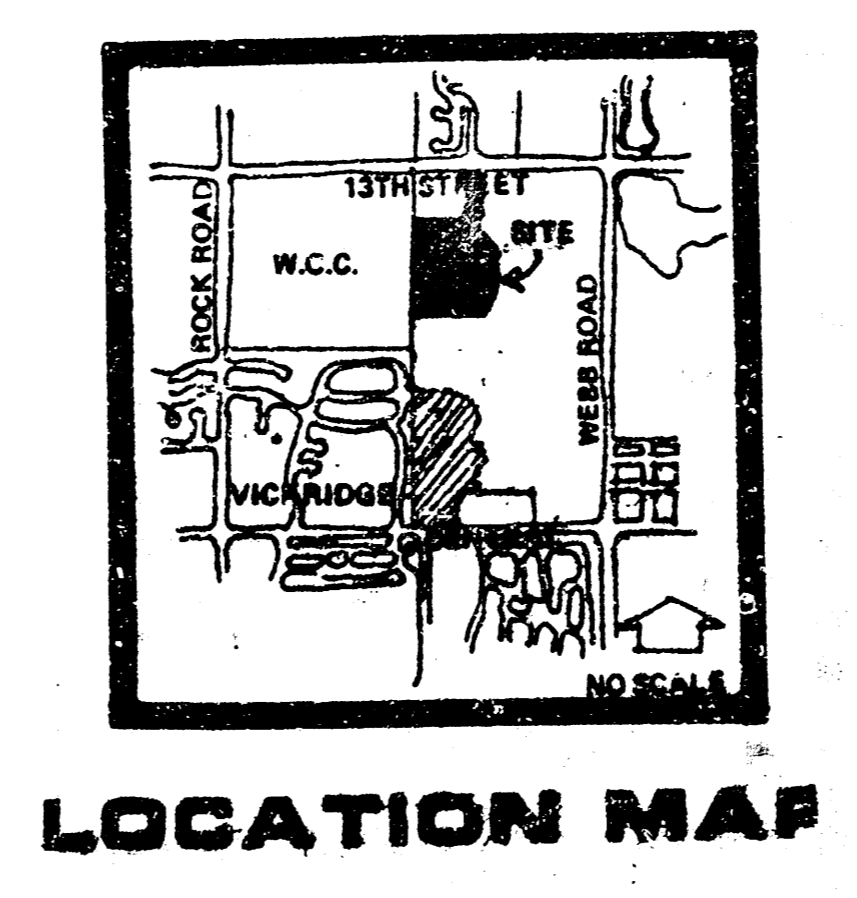


NO.	AREA ACRES	AREA ACCUM.	Tc	C	I ₂	I ₅	I ₁₀₀	O ₂	O ₅	O ₁₀₀	SIZE	SLOPE
1. Collegiate	1.8		17	0.44		4.31	7.00		6.6	10.7	15" # 15	
2.	1.7		17	0.50		4.31	7.00		3.7	6.0		
1 & 2		3.5		0.68		4.31	7.00		10.3	16.7	21" # 0.445	
3.	3.6		15	0.60		4.56	7.37		8.2	13.3	18" # 0.22	
1 & 3		7.1		0.58		4.31	7.00		18.1	29.3	30" # 0.25	
4.	1.1		15	0.50		4.31	7.00		2.5	4.0		
5.	0.9		15	0.50		4.31	7.00		2.0	3.3		
1 thru 5		9.1		0.57		4.20	6.84		22.0	35.5	30" # 0.25	
6.	2.0		18	0.5	3.51		6.84	3.5		6.8	15" # 0.455	
7.	2.0		18	0.5	3.51		6.84	3.5		6.8		
6 & 7		4.0		0.5	3.51		6.84	7.0			18" # 0.455	
8.	2.6		20	0.6	3.33		6.53	5.2		10.2		
6 thru 8		6.6		0.54	3.33		6.53	11.9		23.3	24" # 0.25	
9.	1.3		15	0.6	4.31		7.00	3.4		5.5		
6 thru 9		7.9		0.55	3.33		6.53	14.5		28.4	30" # 0.545	
10.	3.0			0.5	3.61		7.00	5.4		10.5		
6 thru 10		10.9		0.54	3.33		6.53	19.6		38.4	36" # 0.345	
11.	2.5		20	0.6	3.33		6.53	5.0		9.8		
6 thru 11		13.4		0.55	3.33		6.53	24.50		48.1	36" # 0.54	



MK EC

MID-KANSAS ENGINEERING CONSULTANTS PA
 3500 N. ROCK ROAD
 BUILDING 800
 WICHITA, KANSAS 67206
 682-6361



CONSULTANTS
 MID-KANSAS ENGINEERING CONSULTANTS PA