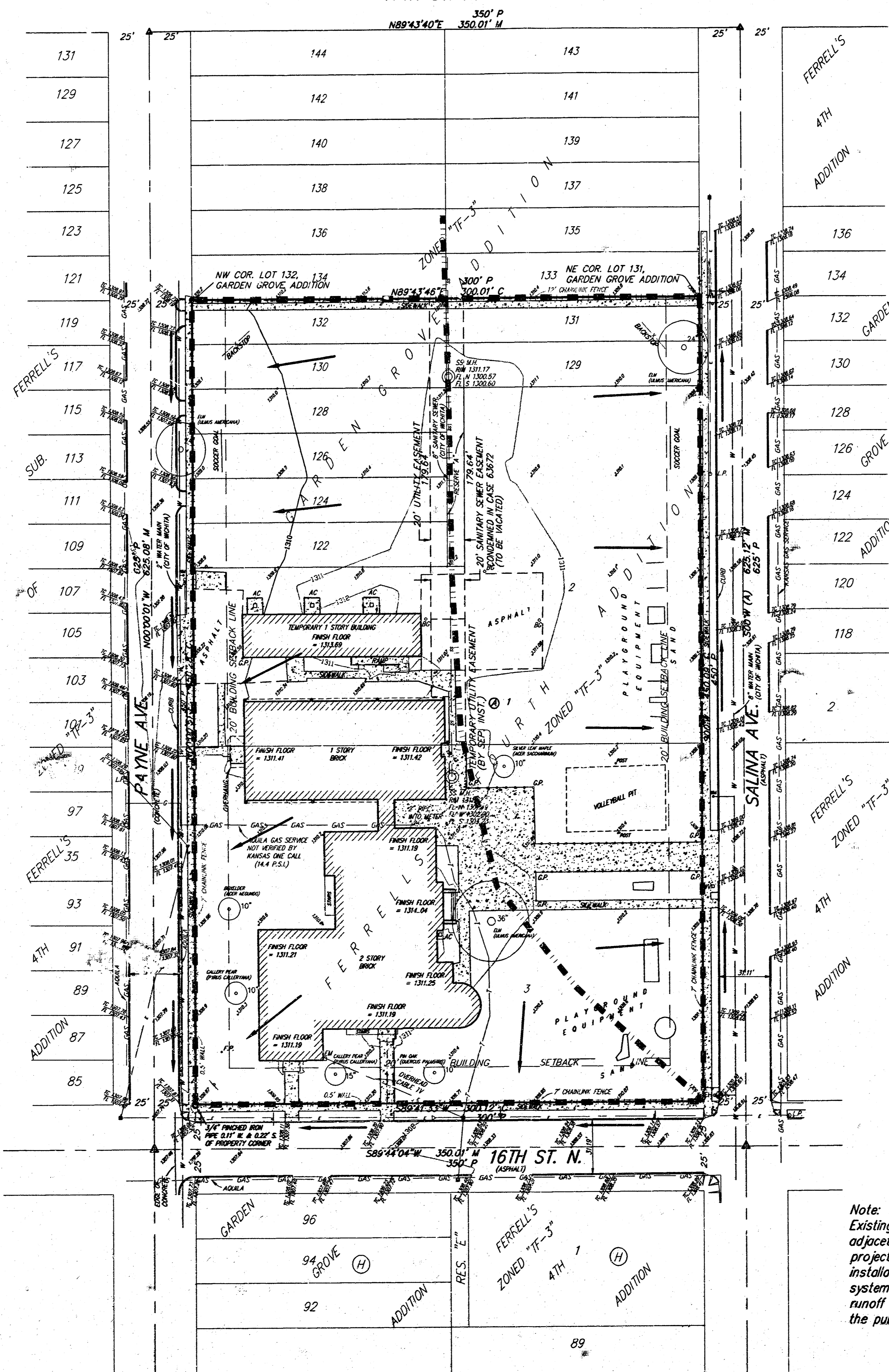

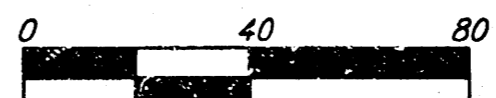


# DRAINAGE PLAN WOODLAND ELEMENTARY SCHOOL ADDITION WICHITA, SEDGWICK COUNTY, KANSAS

17TH ST. N.



DATE OF PREPARATION: 23 MARCH 2004  
 DATE OF TOPOGRAPHY: 18 APRIL 2003  
 CONTOUR INTERVALS = 1.000'

**SURVEY MARKS LEGEND**

- △ = Triangular
- = 3/4" IRON PIPE
- ⊙ = 3/4" FINCHED IRON PIPE
- ∇ = CHISELED V NOTCH (SET)
- = 1/2" REBAR W/ RINGSLES & BOM CAP (SET)

**REMARKS:** CON IRON ON CONCRETE BASE OF FINISH SCHOOL LIGHT ON SOUTH SIDE OF 16TH ST. N. 100 FEET MORE OR LESS EAST OF PAINE ELEV. = 1300.0 (M.S.L.)

**REMARKS:** 1" TOP OF CURB 20" H. & 15" W. OF CENTER LINE OF SALINA AVE. @ 16TH ST. N. ELEV. = 1300.0 (M.S.L.)

*Note:*  
 Existing runoff is directed to the adjacent city right-of-ways. This infill project has limited availability for installation of any stormwater sewer systems. Proposed conditions will allow runoff to continue to discharge within the public right-of-ways.