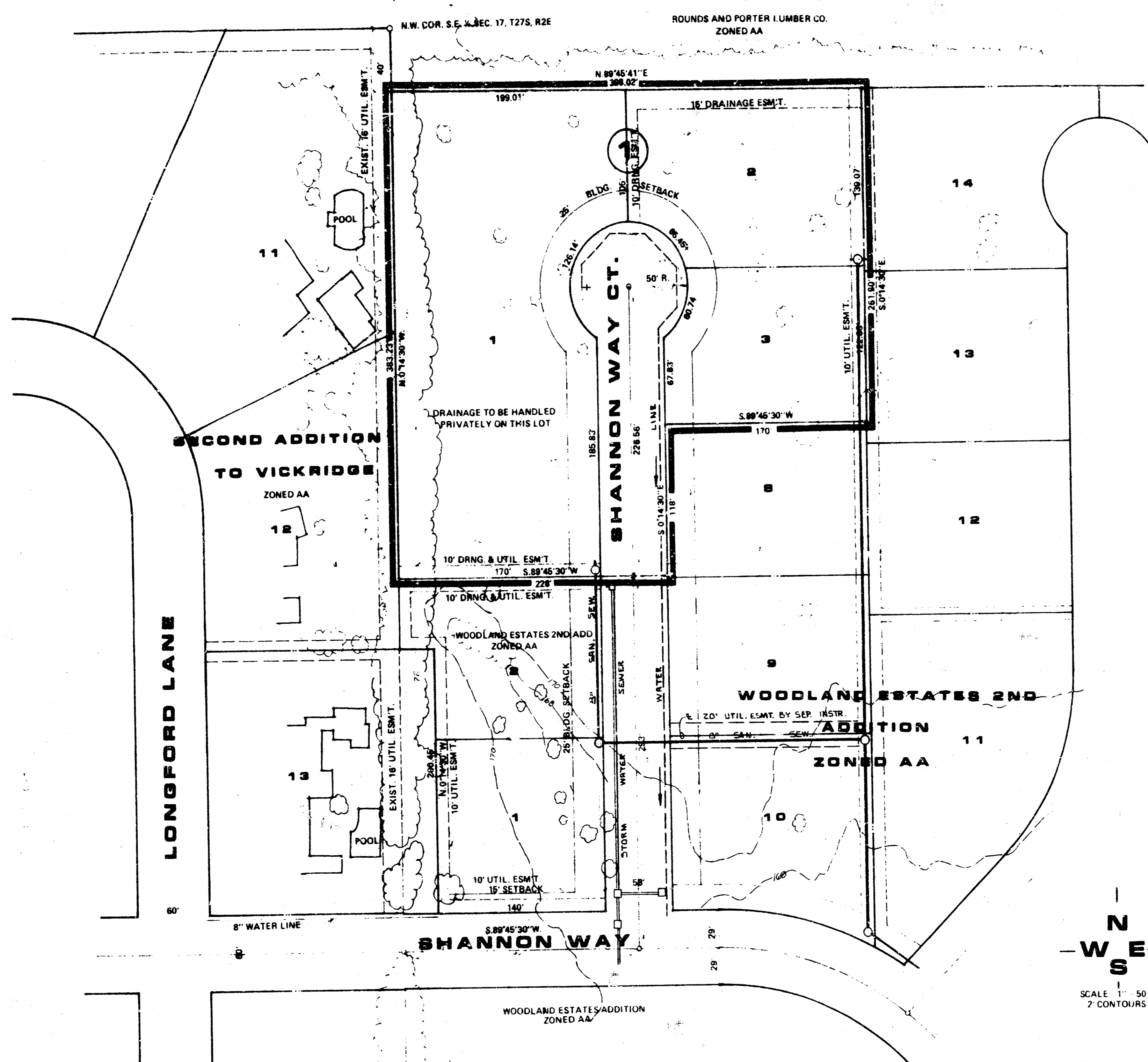
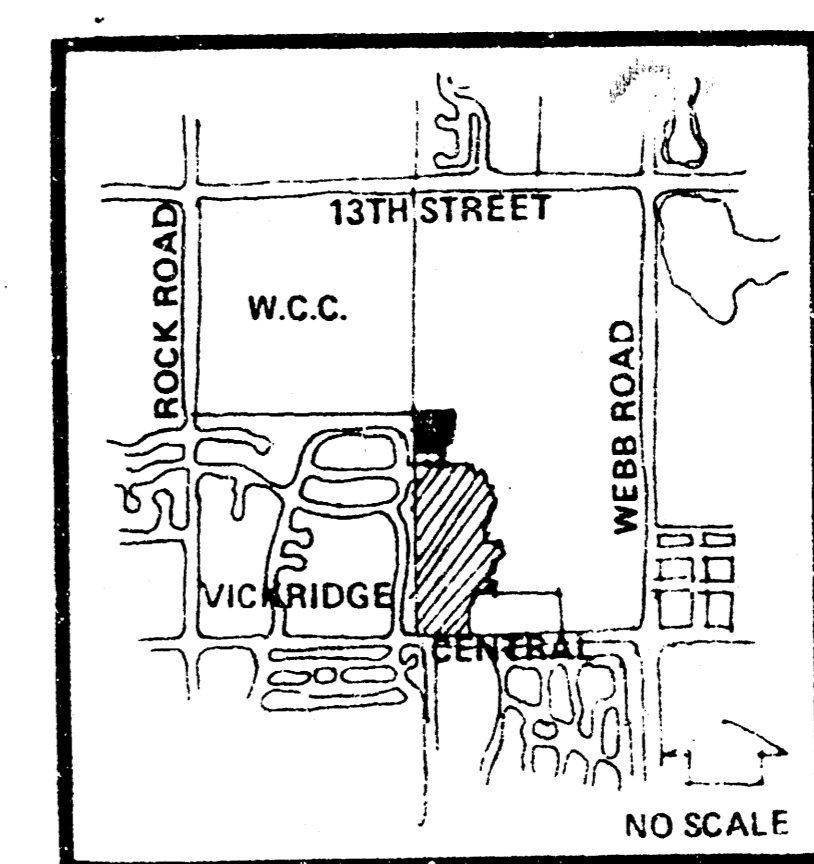


WOODLAND ESTATES 3RD ADDITION  
(Drainage)

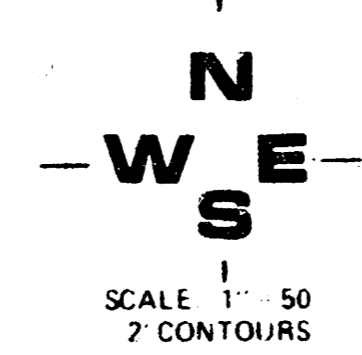


**NOTES:**

TOPOGRAPHY IS FROM AERIAL TAKEN JUNE 1985.  
 A DRAINAGE CONCEPT PLAN WILL BE PREPARED BY M.K.E.C. AND  
 SUBMITTED TO CITY ENGINEER.  
 BENCHMARK: SPIKE STEP IN CORNER FENCE POST 80' S OF N.W. CORNER  
 LOT 15, BLOCK 1 WOODLAND ESTATES 2ND ADDITION ELEV 178.08



LOCATION MAP



DRAINAGE & UTILITY CONCEPT (REPLAT OF A PORTION OF WOODLANDS ESTATES 2ND ADDITION)

# WOODLAND ESTATES 3RD

OWNER: RITCHIE ASSOCIATES, 8100 E. 22ND NORTH, BLDG. 500, WICHITA, KS 67226



MID-KANSAS ENGINEERING CONSULTANTS, P.A.  
 3000 NORTH ROCK ROAD  
 WICHITA, KANSAS 67203  
 WICHITA, KANSAS 67203 620-4541