

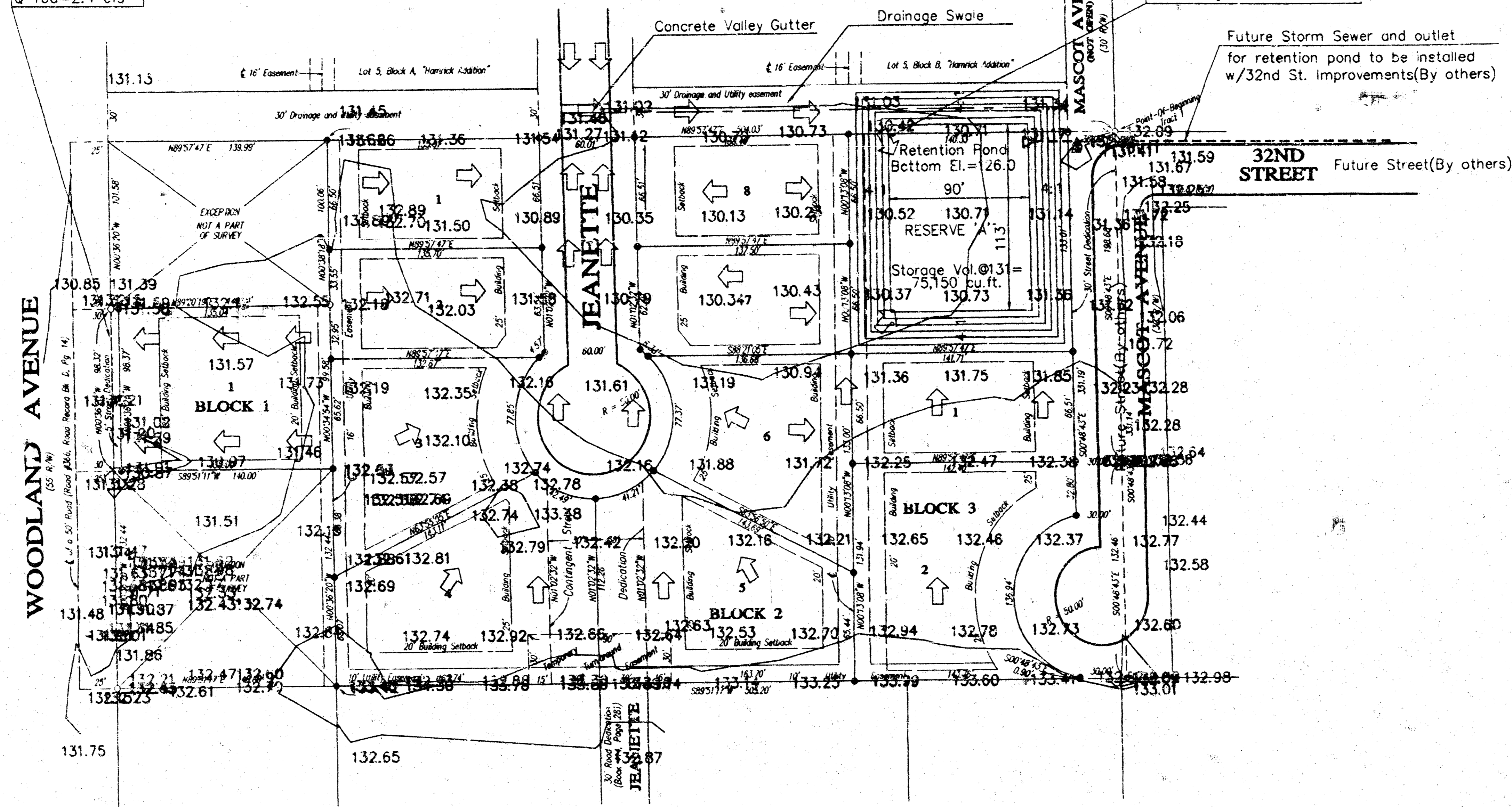
Drainage Plan for "WOODLAND GLEN"

AN ADDITION TO SEDGWICK COUNTY, KANSAS
IN THE SOUTHWEST QUARTER OF SECTION 32, T26S, R1E OF THE 6TH P.M.

DRAINAGE DATA
Area=0.31 acres
C = 0.85
Tc = 15 min.
i 100=8.98"/hr.
Q 100=2.4 cfs

DRAINAGE DATA
Area=3.9 acres
C = 0.85
Tc = 15 min.
i 100=8.98"/hr.
Q 100=29.70 cfs
Retention Pond
P 100 = 7.8"
CN=75 S=3.33
SCS Q(runoff)=4.86 inches
Vol. Runoff=68,803 cu.ft.
Max. Stage=130.7

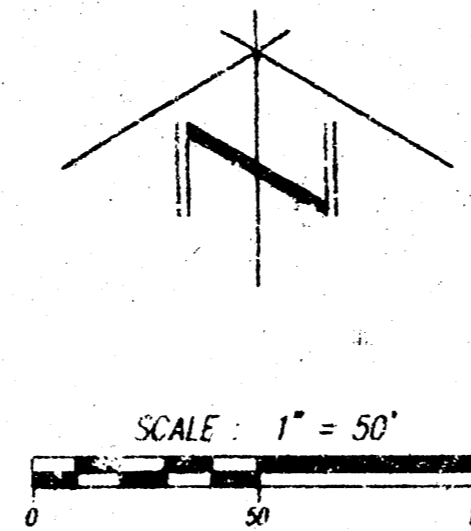
Pond water depth=4.7 feet for 100 yr. precip.
SCS Soil Type B(Urban land-Canadian complex)
Soil permeability = 2.0-5.0 in./hr.(From SCS Soil Survey)
Time to empty by percolation=4.7"x12"/2" /r.=28.2 hours
NOTE:
(Retention pond will be converted into detention pond at a future date when storm sewer improvements are installed in with 32nd Street paving improvements.)



BENCH MARK
Railroad spike in H.P. Northeast corner of Proposed "Woodland Glen"
Elevation: 132.32' City Datum

OTHER EASEMENTS
132.17 "Woodland Glen" lies within the RICE Easements for pole line shown on Misc. bk. 155, pg. 342 and on Misc. bk. 16A, pg. 355

SETBACKS
Side-yard building setbacks are 6' unless otherwise noted



LEGEND:
● = #4 Rebar Set with I.D. Cap 17E51 23522
○ = Monument Found
▲ = Bench Mark
Bearing Basis Assumed

131.50 TOPOGRAPHIC SURVEY BY: [Signature]

TERRA TECH
LAND SURVEYING | INC.

DRAINAGE PLAN FOR
WOODLAND GLEN ADDITION
WICHITA, KS

CERTIFIED ENGINEERING DESIGN

CEDE
438 NORTH OHIO
WICHITA, KANSAS 67214
PH. (316)262-8808 FAX (316)262-0680

DESIGNED: HOF	SCALE: 1" = 50'	SHEET
DRAWN: HOF	DATE: 12-2-08	1
CHECKED: HOF	CEDE FILE: WOOD_MOODP.DWG	TOTAL 1

12-29-08