

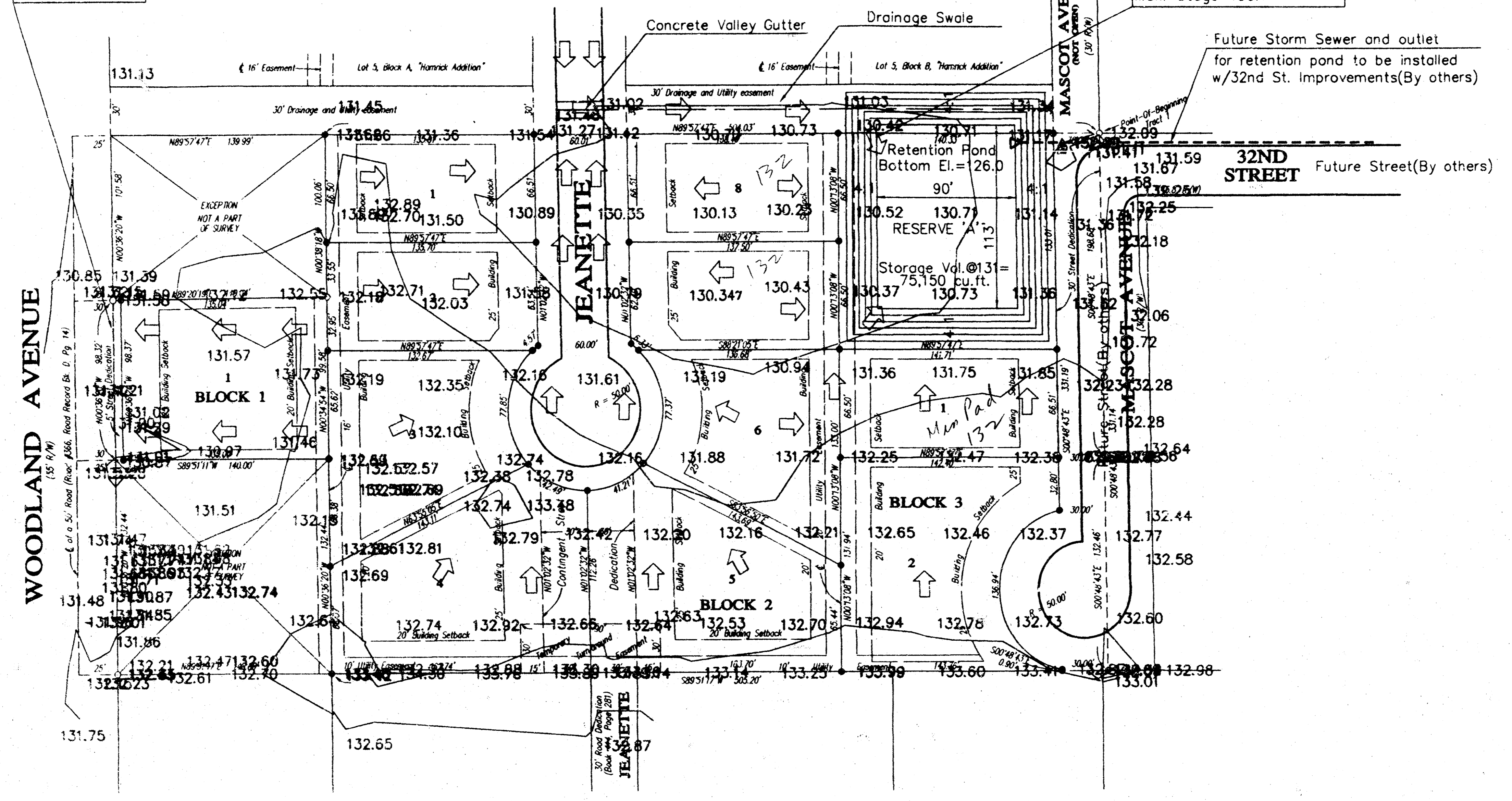
Drainage Plan for "WOODLAND GLEN"

AN ADDITION TO SEDGWICK COUNTY, KANSAS
IN THE SOUTHWEST QUARTER OF SECTION 32, T26S, R1E OF THE 6TH P.M.

DRAINAGE DATA
Area=0.31 acres
C = 0.85
Tc = 15 min.
i 100=8.98"/hr.
Q 100=2.4 cfs

DRAINAGE DATA
Area=3.9 acres
C = 0.85
Tc = 15 min.
i 100=8.98"/hr.
Q 100=29.70 cfs
Retention Pond
P 100 = 7.8"
CN=75 S=3.33
SCS Q(runoff)=4.86 inches
Vol. Runoff=68,803 cu.ft.
Max. Stage=130.7

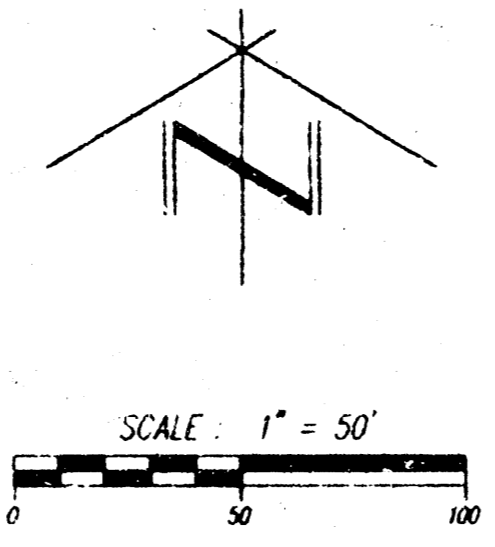
Pond water depth=4.7 feet for 100 yr. precip.
SCS Soil Type B(Urban land-Canadian complex)
Soil permeability = 2.0-6.0 in./hr.(From SCS Soil Survey)
Time to empty by percolation=4.7'x12/2"/hr.=28.2 hours
NOTE:
(Retention pond will be converted into detention pond at a future date when storm sewer improvements are installed in with 32nd Street paving improvements.)



BENCH MARK:
Railroad Spike in H.P. Northeast corner of Proposed "Woodland Glen"
Elevation: 132.32' City Datum

OTHER EASEMENTS:
132.17 "Woodland Glen" lies within the A/E Easements for pole line called out in Misc. Bk. 165, Pg. 34; and in Misc. Bk. 168, Pg. 355.

SETBACKS:
Side-yard building setbacks are 6' unless otherwise noted.



LEGEND:
● = 1/4" Rebar Set with I.D. Cap 1/8" S.I. 0.522"
○ = Monument Found
▲ = Bench Mark
Bearing Basis Assumed

DRAINAGE PLAN FOR WOODLAND GLEN ADDITION WICHITA, KS		
CERTIFIED ENGINEERING DESIGN		
438 NORTH OHIO WICHITA, KANSAS 67214 PH. (316)262-8808 FAX (316)262-0080		
DESIGNED: HDF	SCALE: 1" = 50'	SHEET 1
DRAWN: HDF	DATE: 12-98	
CHECKED: HDF	FILE: WOOD_MOODP.DWG	TOTAL 1

131.50 TOPOGRAPHIC SURVEY BY:
TERRA TECH
LAND SURVEYING INC.

12-29-98