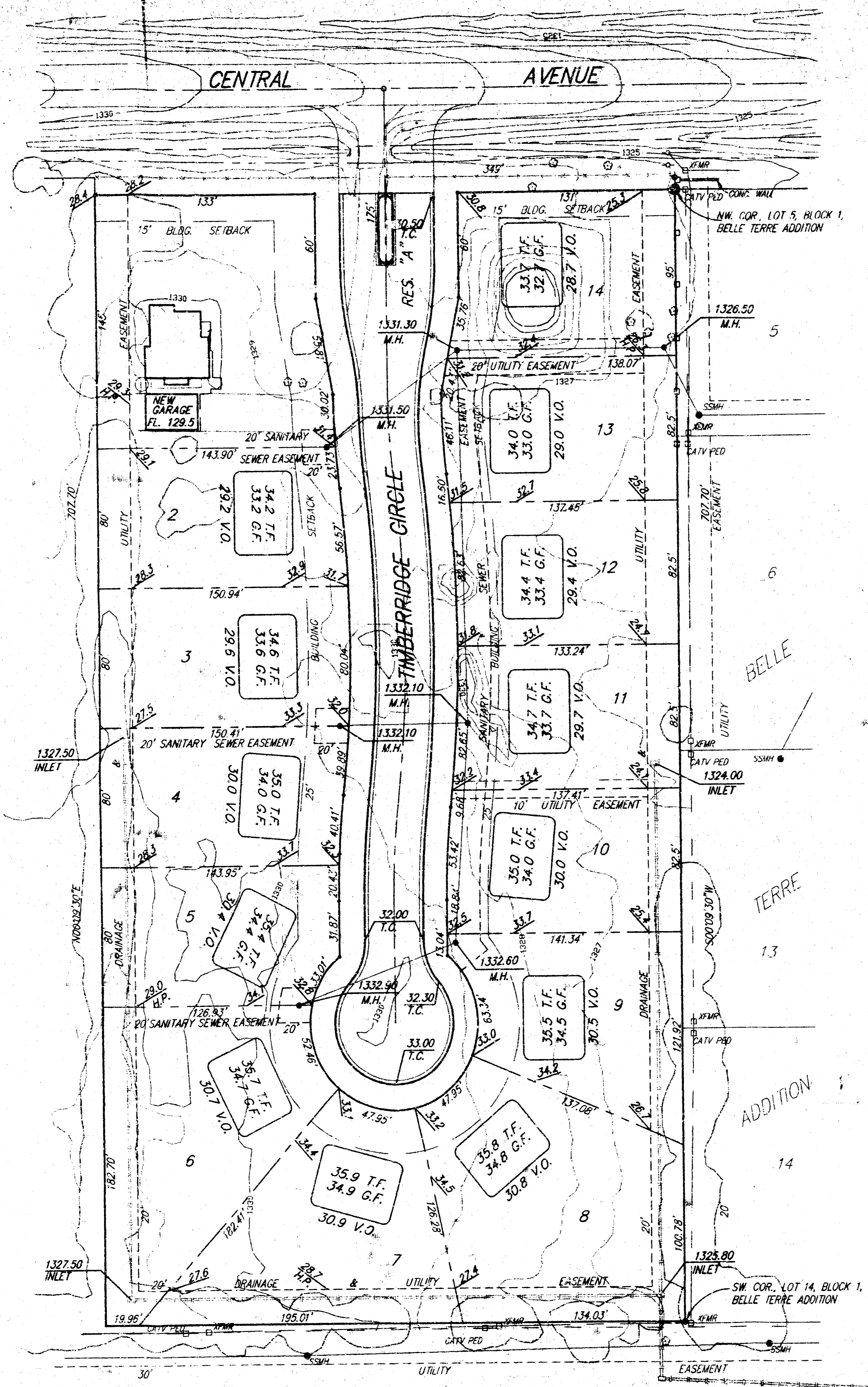
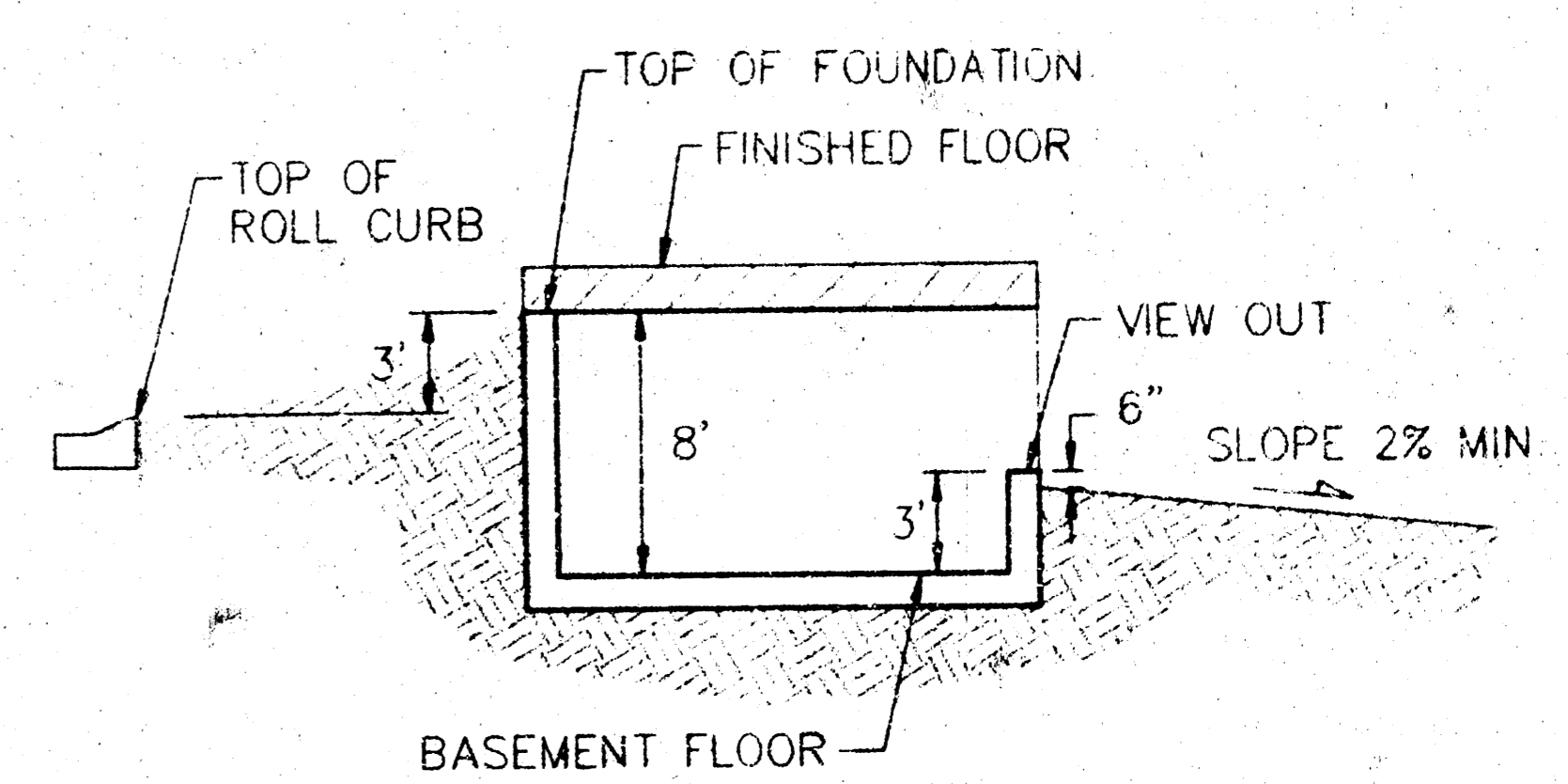


Benchmark:
 Railroad Spike in North Face of
 Power Pole Located 12' North
 and 2' West of the Northeast
 Corner of Reserve "C", Belle
 Terre Addition.
 Elevation = 1316.17 MSL



NOTE:
 Proposed top of foundation and garage floor
 elevations are shown on plans. Contractor to
 set finish floor elevation.
 All street elevations shown on plans are for top
 of curb (full height).
 View-out elevations are denoted by XXX V.O.



TYPICAL VIEW OUT
 NO SCALE

**APPROVED
 DRAINAGE PLAN**

WOODLAND PLACE ADDITION
LOT GRADING PLAN

BAUGHMAN COMPANY P. A.
 ENGINEERING, SURVEYING, & PLANNING
 318-262-7271 • 315 ELLIS • WICHITA, KANSAS 67211

DESIGN	DRAWN	APPROVED	DATE	SCALE	SHEET
	JAB		6-10-96	1"=40'	1 OF 1

PROJECT NUMBER: WOODLAND PLACE ADDITION-05-E-25