

NEWMARKET V ADDITION

AN ADDITION TO WICHITA, SEDGWICK COUNTY, KANSAS

DRAINAGE PLAN

NOTE:

Minimum Pad = 167.5 City Datum or 1354.9 NGVD
 Total inflow, Q, into the detention pond is based upon a fully developed basin.

The 7' x 2.5' RCB can only handle a portion of the total flow down the Maize Rd. ditch. Currently the rest of the flow is diverted to the west.

New Market V drainage plan meets the requirements of the Cadillac Lake Drainage Study dated August 2006.

Property is located within a FEMA Flood Zone A.

BFE = ELEVATION: 164.5 CITY DATUM
 1352.1 N.G.V.D.

*Once a final wetland determination has been done on the property to the west, then the ditch slopes can be adjusted accordingly.

** Total Drainage Area = 670 Acres which drains to 10'x3' & 7'x 2.5' RCB's.

All Elevations in NGVD.

Box Culvert Along Maize Rd. will be installed to meet the requirements of City of Wichita, Traffic Engineering Department.

The drainage plan is subject to change based on the Army Corp permit Requirements.

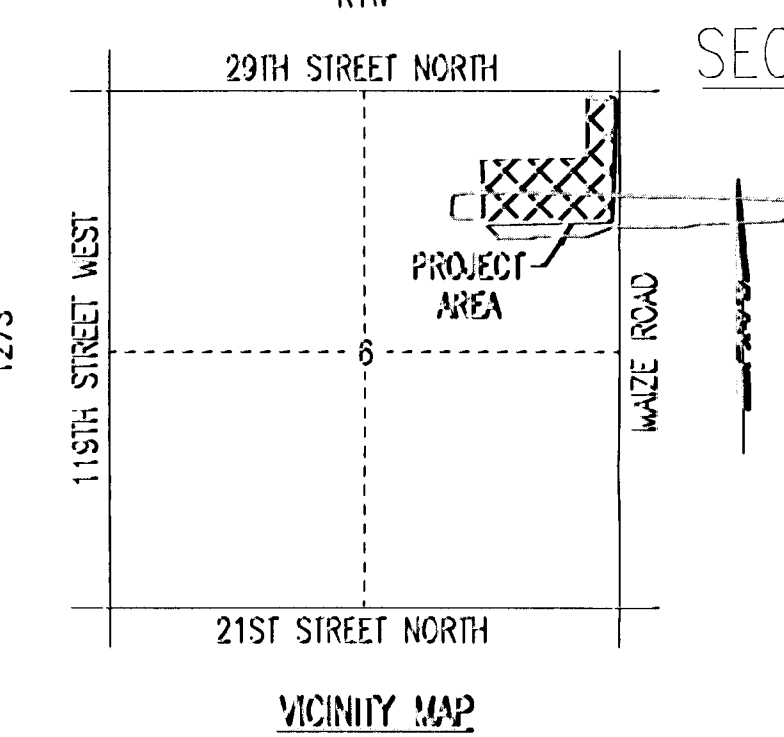
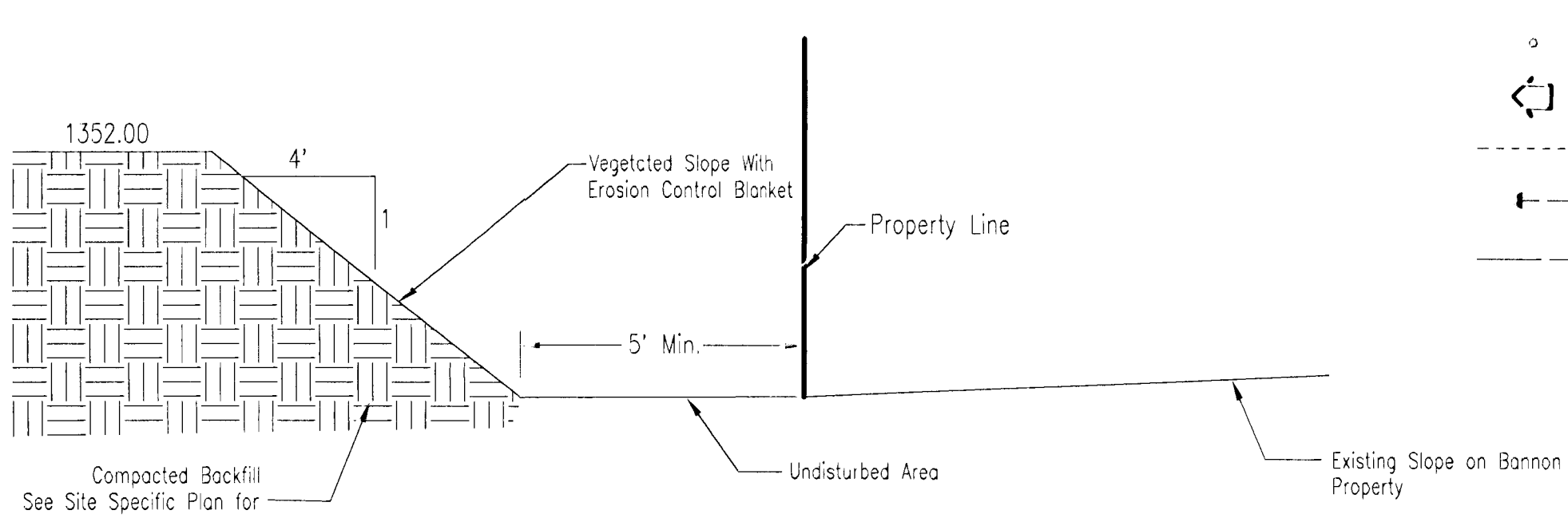
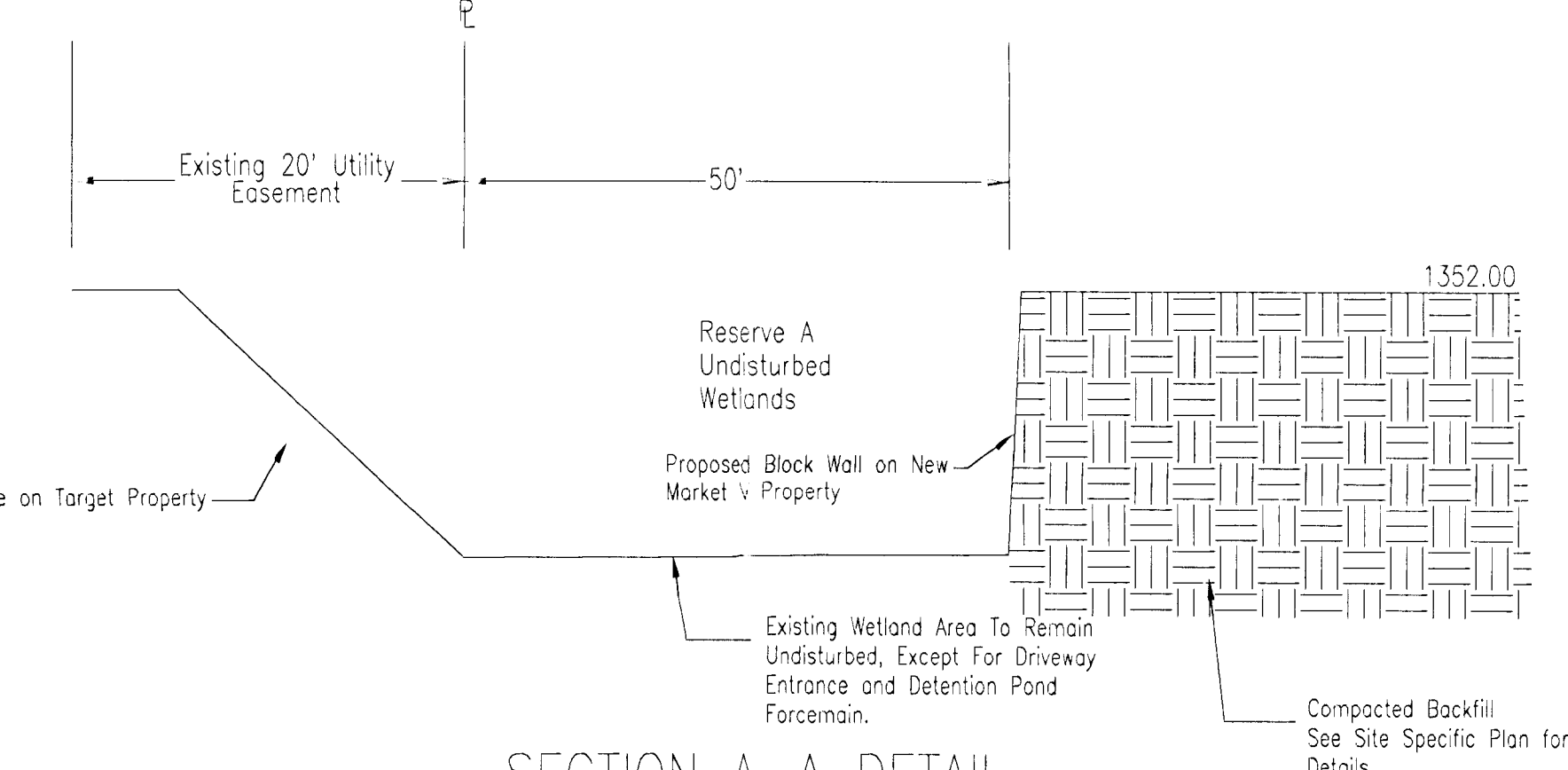
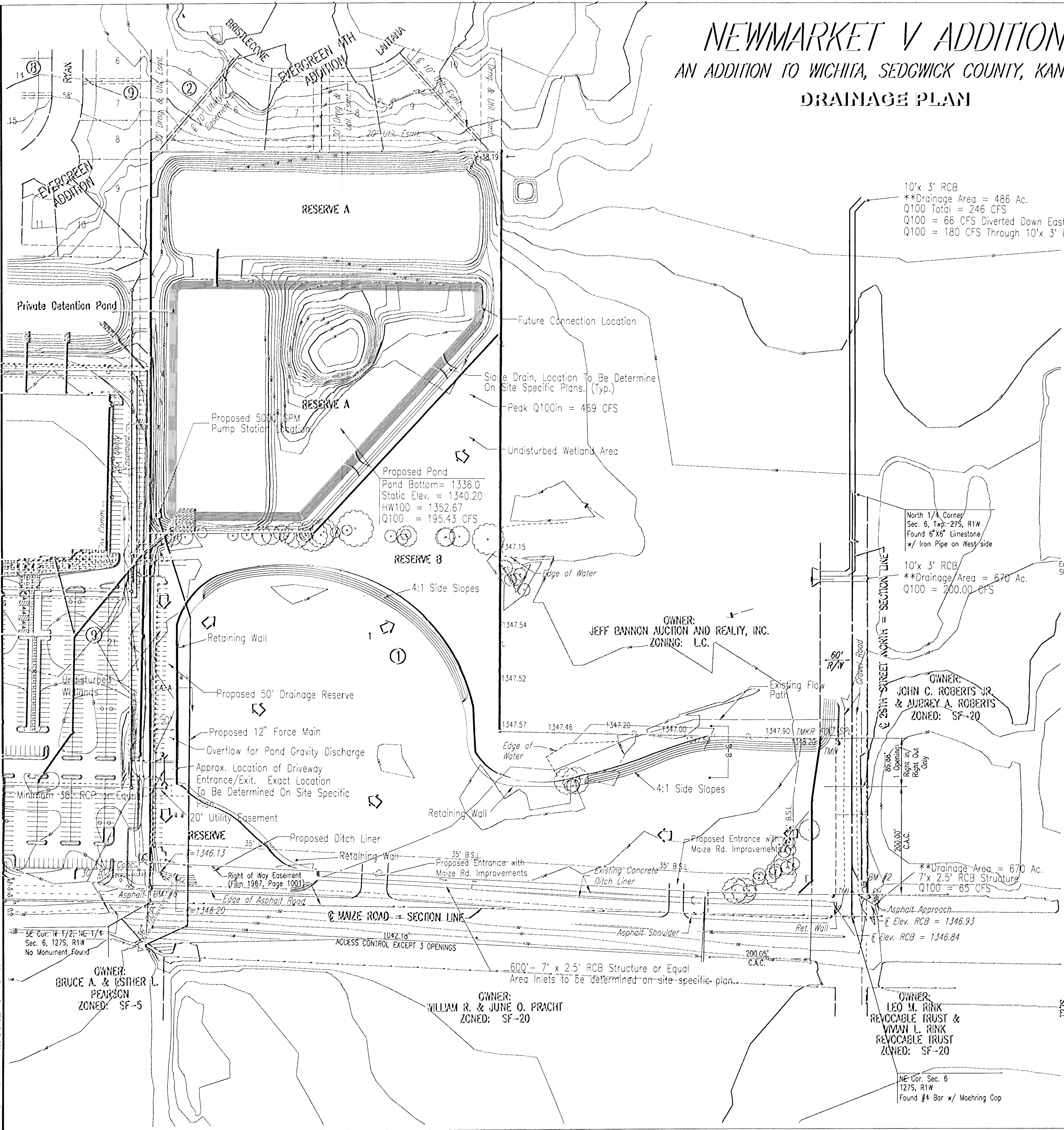
SCALE: 1" = 100'

BENCHMARKS \oplus BM

BM #2
 CITY OF WICHITA BM DISC 63.4' WNW OF NE COR., SEC. 6, 127S, R1W
 ELEVATION: 161.92 CITY DATUM
 1349.32 N.G.V.D.

BM #6
 CHISELED "J" ON TOP BACK CURB, W. CURB LINE OF MAIZE RD. AT BEGINNING OF CURB \pm 1/4 MILE S. OF 29TH ST. N.
 ELEVATION: 164.52 CITY DATUM
 1351.92 N.G.V.D.

Reserve A - Drainage & Storm Water Detention
 Reserve B - Wetland Preservation & Drainage



LEGEND

- \circ Sign
- \leftarrow Flow Arrow - Very Low Flows
- Flowline Of Ditch
- \rightarrow Flow Arrow - Normal Flows
- Existing Flow Path

Revised 2/29/08

Sheet 04-24-2008 15:45:45 PW by NCD
 Plot Scale 1:100 06-10-2008 10:53:06 AM by AEE
 C:\2005\04023\04023-Reserve Drainage Plan 4-24-08