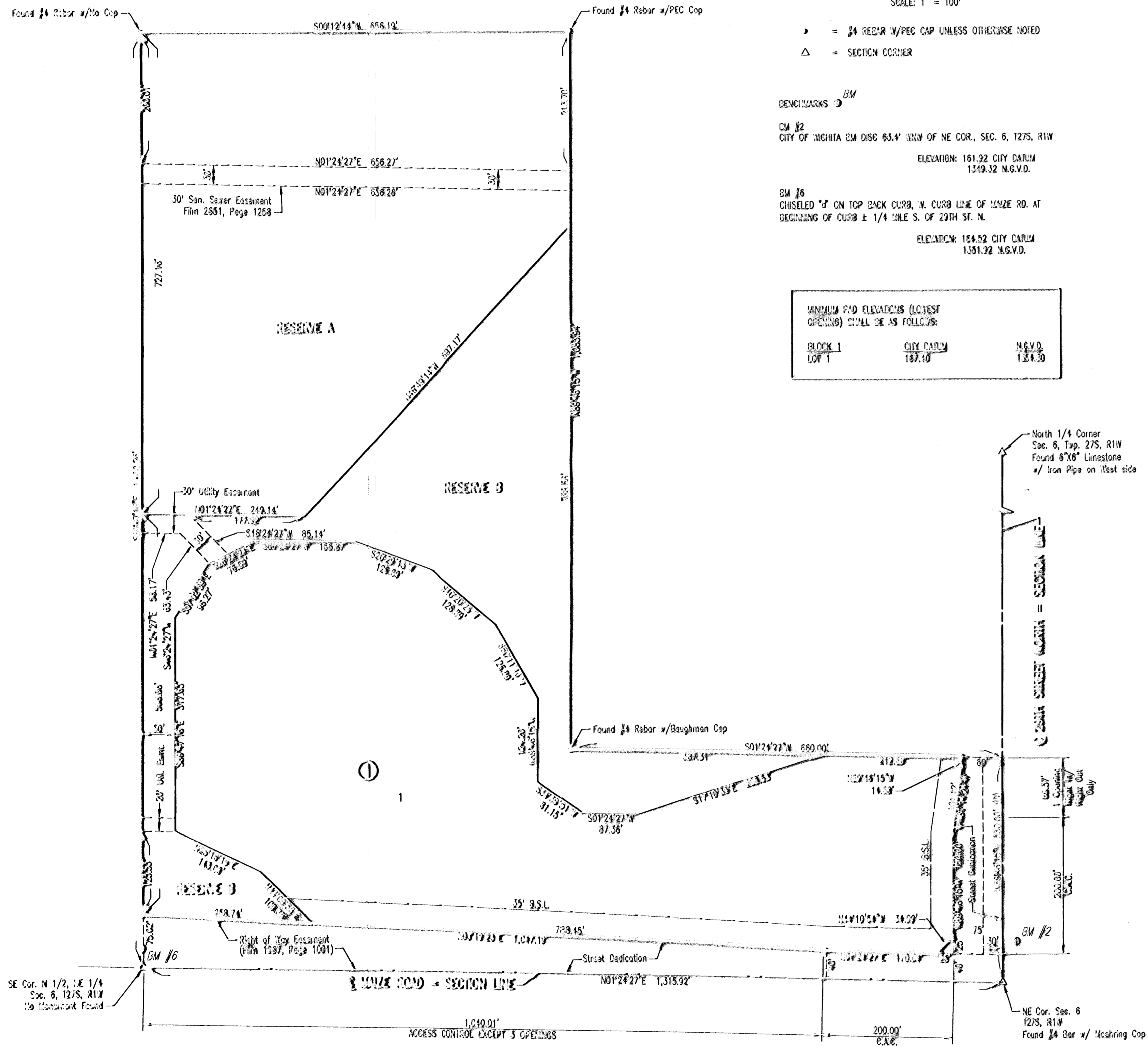


# NEWMARKET V ADDITION

## AN ADDITION TO WICHITA, SEDGWICK COUNTY, KANSAS



SCALE: 1" = 100'

▸ = #4 REBAR w/PEC CAP UNLESS OTHERWISE NOTED  
 Δ = SECTION CORNER

BENCHMARKS: BM  
 BM #2  
 CITY OF WICHITA BM DISC 63.4' WNW OF NE COR., SEC. 6, T27S, R1W  
 ELEVATION: 161.92 CITY DATUM  
 1349.32 M.G.V.D.

BM #6  
 CHISELED "d" ON TOP BACK CURB, W. CURB LINE OF MAIZE RD. AT  
 BEGINNING OF CURB ± 1/4 MILE S. OF 29TH ST. N.  
 ELEVATION: 184.52 CITY DATUM  
 1351.92 M.G.V.D.

MINIMUM PVD ELEVATIONS (LOWEST OPENING) SHALL BE AS FOLLOWS:		
BLOCK	CITY DATUM	M.G.V.D.
BLOCK 1	187.10	1.81.30
LOT 1		

STATE OF KANSAS }  
COUNTY OF SEDGWICK } SS

WE, PROFESSIONAL ENGINEERING CONSULTANTS, P.A., ENGINEERS AND SURVEYORS IN AFORESAID STATE AND COUNTY, DO HEREBY CERTIFY THAT OF THIS 12<sup>th</sup> DAY OF May, 2008, WE HAVE SURVEYED AND PLATTED NEWMARKET V ADDITION, AN ADDITION TO WICHITA, SEDGWICK COUNTY, KANSAS, INTO A LOT, A BLOCK, AND RESERVES THE SAME BEING DESCRIBED AS FOLLOWS:

PART OF THE NORTH 1/2 OF THE N.E. 1/4, SECTION 6, TOWNSHIP 27 SOUTH, RANGE 1 WEST OF THE 6TH P.M. DESCRIBED AS:

BEGINNING AT THE NORTHEAST CORNER OF SECTION 6, TOWNSHIP 27 SOUTH, RANGE 1 WEST OF THE 6TH P.M., SEDGWICK COUNTY, KANSAS, THENCE BEARING N89°18'15"W ALONG THE NORTH LINE OF SAID N.E. 1/4, A DISTANCE OF 330.00 FEET; THENCE BEARING S01°24'27"W, PARALLEL WITH THE EAST LINE OF SAID N.E. 1/4, A DISTANCE OF 880.00 FEET; THENCE BEARING N89°18'15"W, PARALLEL WITH THE NORTH LINE OF SAID N.E. 1/4, A DISTANCE OF 1,083.04 FEET; THENCE BEARING S01°24'27"W, PARALLEL WITH THE SOUTH LINE OF THE NORTH 1/2 OF THE N.E. 1/4 AND THE NORTH LINE OF EVERGREEN ADDITION TO WICHITA, SEDGWICK COUNTY, KANSAS; THENCE BEARING S01°24'27"W, ALONG THE NORTH LINE OF EVERGREEN ADDITION, A DISTANCE OF 1,400.28 FEET TO THE S.E. CORNER OF THE NORTH 1/2, OF THE N.E. 1/4, SECTION 6; THENCE BEARING N1°24'27"E, A DISTANCE OF 1,315.92 FEET TO THE POINT OF BEGINNING.

ALL PUBLIC EASEMENTS LYING WITHIN THE ABOVE DESCRIBED TRACT OF LAND ARE HEREBY VACATED AND REPLATED BY VIRTUE OF KSA 12-512(b) AMENDED.

JAMES R. BECKWITH, R.L.S. NO. 832  
 PROFESSIONAL ENGINEERING CONSULTANTS, P.A.

ALL ADJUTERS RIGHT OF ACCESS TO AND FROM 29TH STREET NORTH OVER AND ACROSS THE NORTH PROPERTY LINE, AND TO AND FROM MAIZE ROAD OVER AND ACROSS THE EAST PROPERTY LINE IS HEREBY GRANTED TO THE CITY OF WICHITA, PROVIDED HOWEVER THAT THERE SHALL BE ACCESS TO 29TH STREET NORTH AT 1-OPENING AND ACCESS TO MAIZE ROAD AT 3-OPENINGS. ALL ACCESS OPENINGS SHALL BE IN ACCORDANCE WITH MINIMUM SPACING REQUIREMENTS OF THE WICHITA/SEDGWICK COUNTY ACCESS MANAGEMENT STANDARDS.

THE STREET DEDICATION ALONG THE NORTH AND EAST PROPERTY LINES ARE HEREBY DEDICATED TO AND FOR THE USE OF THE PUBLIC.

EASEMENTS FOR THE CONSTRUCTION AND MAINTENANCE OF PUBLIC UTILITIES ARE HEREBY GRANTED.

A DRAINAGE PLAN HAS BEEN APPROVED FOR THIS PLAT. ALL DRAINAGE EASEMENTS, RIGHTS-OF-WAY, OR RESERVES SHALL REMAIN AT ESTABLISHED GRADES AND UNOBSTRUCTED TO ALLOW FOR THE CONVEYANCE OF STORM WATER, UNLESS MODIFIED WITH THE APPROVAL OF THE CITY ENGINEER.

RESERVE "A" IS HEREBY PLATTED FOR DRAINAGE DETENTION, LANDSCAPING, SIDEWALKS, AND UTILITIES CONFINED TO EASEMENTS. RESERVE "B" IS HEREBY PLATTED AS A BUFFER FOR DRAINAGE AND UTILITIES OCCUPIED TO EASEMENTS. RESERVES "A" & "B" SHALL BE OWNED AND MAINTAINED BY AN OWNERS ASSOCIATION TO BE FORMED WITHIN NEWMARKET V ADDITION.

FEMA FLOOD PLAN AND REGULATORY FLOODWAY BOUNDARIES ARE SUBJECT TO PERIODIC CHANGE, AND SUCH CHANGE MAY AFFECT THE DESCRIBED LAND USE WITHIN THE ADDITION.

KNOW ALL MEN BY THESE PRESENTS THAT WE, THE UNDERSIGNED PROPERTY OWNERS OF THE LAND AS ABOVE SET FORTH IN THE SURVEYORS CERTIFICATE, HAVE CAUSED THE LAND TO BE SURVEYED AND PLATTED INTO A LOT, A BLOCK, AND RESERVES THE SAME TO BE KNOWN AS NEWMARKET V ADDITION, AN ADDITION TO WICHITA, SEDGWICK COUNTY, KANSAS.

OWNERS:  
NEWMARKET V, LLC, A KANSAS LIMITED LIABILITY COMPANY

JERRY JONES, VICE PRESIDENT

STATE OF KANSAS }  
COUNTY OF SEDGWICK } SS

THIS INSTRUMENT WAS ACKNOWLEDGED BEFORE ME ON THIS 12<sup>th</sup> DAY OF May, 2008, BY JERRY JONES, VICE PRESIDENT OF NEWMARKET V, LLC,

A KANSAS LIMITED LIABILITY COMPANY  
  
 NOTARY PUBLIC

MY APPOINTMENT EXPIRES: December 31, 2009

WE, TRUST BANK, N.A., HOLDER OF A MORTGAGE ON THE ABOVE DESCRIBED PROPERTY, DO HEREBY CONSENT TO THE PLATING OF NEWMARKET V ADDITION, AN ADDITION TO WICHITA, SEDGWICK COUNTY, KANSAS.

ROGER G. EASTWOOD, SENIOR VICE PRESIDENT

STATE OF KANSAS }  
COUNTY OF SEDGWICK } SS

THIS INSTRUMENT WAS ACKNOWLEDGED BEFORE ME ON THIS 12<sup>th</sup> DAY OF May, 2008, BY ROGER G. EASTWOOD, SENIOR VICE PRESIDENT OF

TRUST BANK  
  
 NOTARY PUBLIC

MY APPOINTMENT EXPIRES: 12/31/09

THIS PLAT IS APPROVED AND ALL DEDICATIONS SHOWN HEREON, IF ANY ARE ACCEPTED BY THE CITY COUNCIL OF THE CITY OF WICHITA, KANSAS, THIS

\_\_\_\_\_ DAY OF \_\_\_\_\_, 2008.

\_\_\_\_\_ MAYOR

\_\_\_\_\_ CITY CLERK

STATE OF KANSAS }  
COUNTY OF SEDGWICK } SS

THIS PLAT OF NEWMARKET V ADDITION, AN ADDITION TO WICHITA, SEDGWICK COUNTY, KANSAS, HAS BEEN SUBMITTED TO AND APPROVED BY THE WICHITA-SEDGWICK COUNTY METROPOLITAN AREA PLANNING COMMISSION, WICHITA, KANSAS.

DATED THIS \_\_\_\_\_ DAY OF \_\_\_\_\_, 2008.

WICHITA-SEDGWICK COUNTY METROPOLITAN AREA PLANNING COMMISSION

\_\_\_\_\_ CHAIRMAN

\_\_\_\_\_ SECRETARY

REVIEWED IN ACCORDANCE WITH K.S.A. 58-2506 ON THIS \_\_\_\_\_ DAY

OF \_\_\_\_\_, 2008.

TRACY L. ROBELO, L.S. 1218  
 DEPUTY COUNTY CLERK  
 SEDGWICK COUNTY, KANSAS

ENTERED ON TRANSFER RECORD THIS \_\_\_\_\_ DAY OF \_\_\_\_\_, 2008.

\_\_\_\_\_ COUNTY CLERK

THIS IS TO CERTIFY THAT THIS INSTRUMENT WAS FILED FOR RECORD IN THE

REGISTER OF DEEDS OFFICE AT \_\_\_\_\_, MO., ON THE \_\_\_\_\_ DAY

OF \_\_\_\_\_, 2008.

\_\_\_\_\_ REGISTER OF DEEDS

BILL WEEK

\_\_\_\_\_ DEPUTY

TONYA BUCKINGHAM

SARAH E. HATRUP  
 Notary Public - State of Kansas  
 My Appt. Expires: 12/31/09