

# PRELIMINARY PLAT WEST TOWNE INDUSTRIAL ADDITION

WICHITA, SEDGWICK COUNTY, KANSAS

**LEGAL DESCRIPTION:**

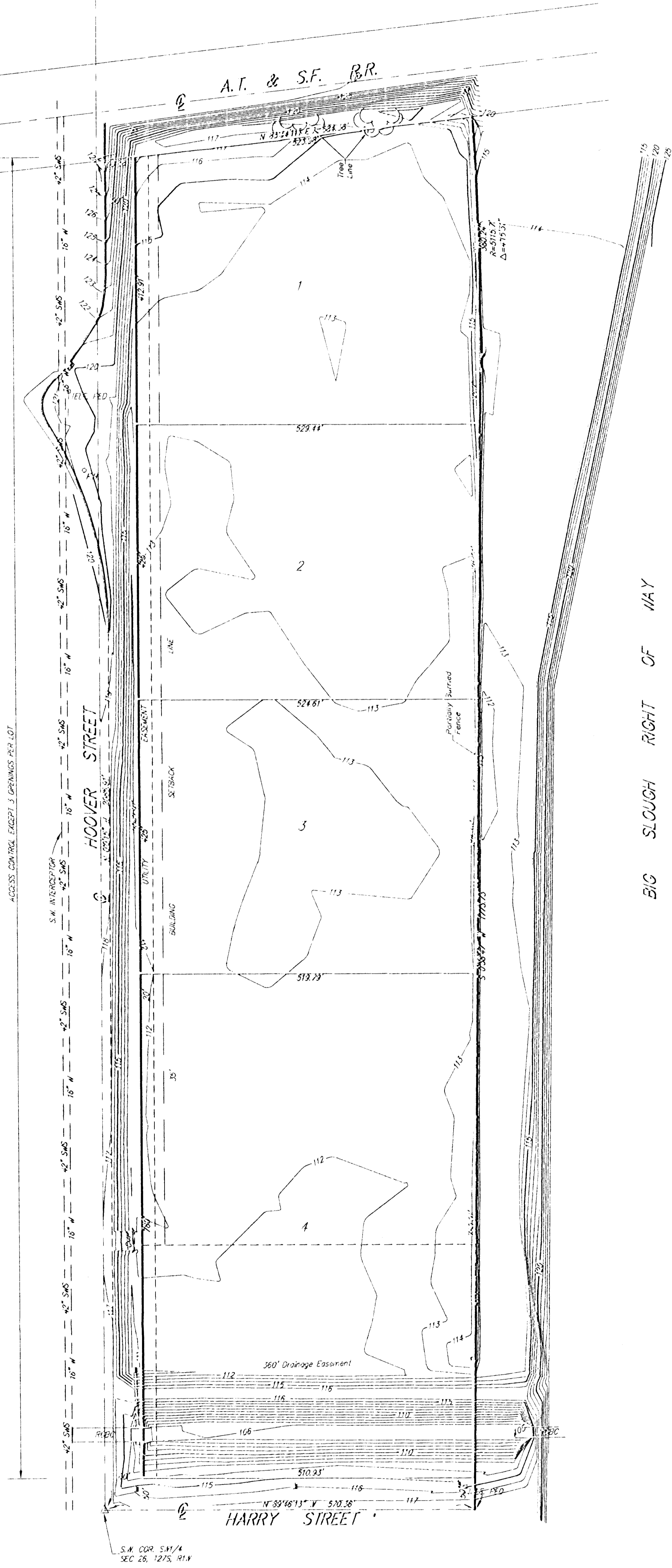
That part of the 1/2 of the SW1/4 lying south of the A.T.&S.F. Railroad right-of-way except, that part taken for floodway in District Court Case A-31849, in Sec. 26, Twp. 27-S, R-1-W of the 6th P.M., Sedgwick County, Kansas.

INDUSTRIAL ASSETS, L.L.C.  
RANDY VOITH  
229 E. WILLIAM, 5TH FLOOR  
WICHITA, KS 67202

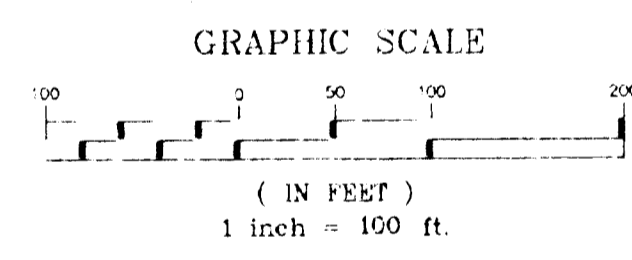
PH (316) 264-3700

GROSS SIZE:  
1,233,256 Sq. Ft. ±  
28.31 Acres ±

NET SIZE:  
1,082,399 Sq. Ft. ±  
24.85 Acres ±



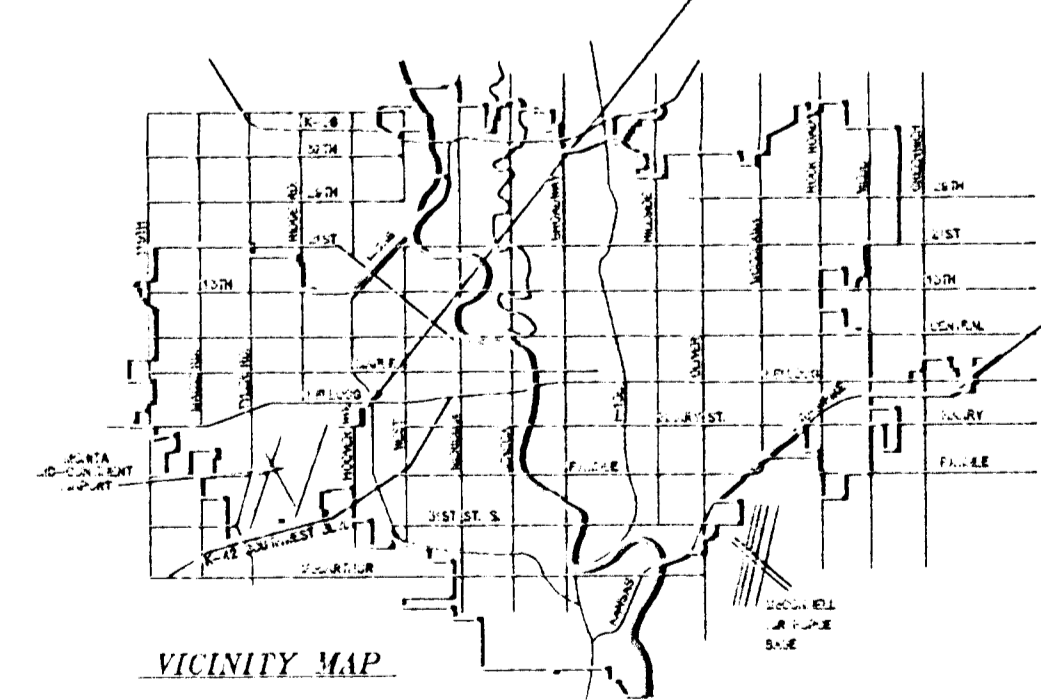
BIG SLOUGH RIGHT OF WAY



TOPOGRAPHY = CITY DATUM  
S.E. ANDERSON, MARCH 97

BENCH MARK: CITY OF WICHITA DISC  
N. END OF N. HEADWALL OF R.C.B.C.  
100 FT. N. OF INTERSECTION HARRY &  
HOOVER.  
ELEV. = 114.26 (CITY DATUM)

WEST TOWNE INDUSTRIAL ADDITION



VICINITY MAP



324 NORTH MAIN  
WICHITA, KANSAS 67203  
http://www.tekst.com/~srb

315-264-8008  
FAX 264-4821  
E-mail: sr@tekst.com

DWG FILE: 00734P-R.C.  
PROJECT NO: 9700754P

SAVOY, RUGGLES & BOHM, P.A.  
ENGINEERING & SURVEYING

29 AUG 1997