

# NEW MARKET

## S Q U A R E <sub>sm</sub>

21st Street & Maize Road - Wichita, Kansas

# TARGET

AT

# NEW MARKET SQUARE NORTHWEST WICHITA, KANSAS

## OCTOBER 2003

PLANS PREPARED BY

# PROFESSIONAL ENGINEERING CONSULTANTS, P.A. ENGINEERS WICHITA, KANSAS

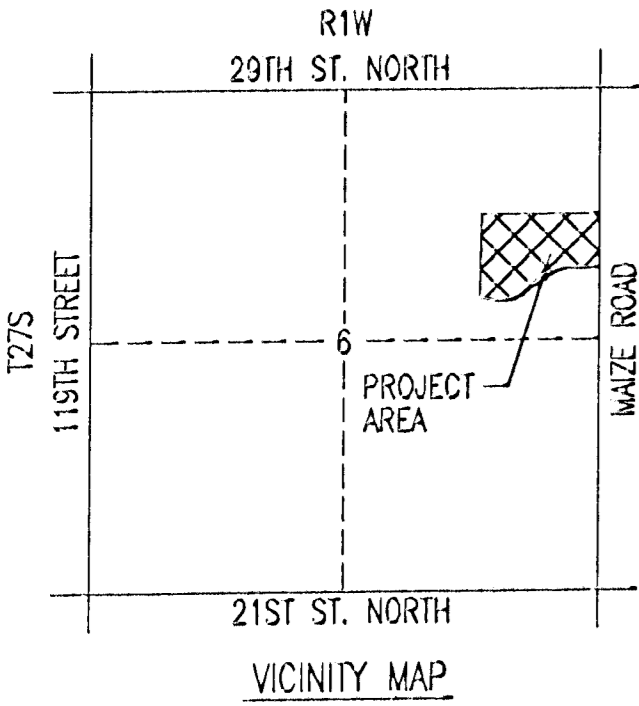
DSNR: BER OPER: GJR SCALE: 1=1.00  
C:\2002\02693\002\Site Civil\Title Sheet 10-03-2003 10:33:06 am

**TARGET**

REVIEWED BY:

Site Development Manager	___ Revise and Resubmit ___ Not Reviewed ___ Approved
Project Architect	___ Revise and Resubmit ___ Not Reviewed ___ Approved
Project Engineer (M)	___ Revise and Resubmit ___ Not Reviewed ___ Approved
Project Engineer (E)	___ Revise and Resubmit ___ Not Reviewed ___ Approved
Project Engineer (S)	___ Revise and Resubmit ___ Not Reviewed ___ Approved

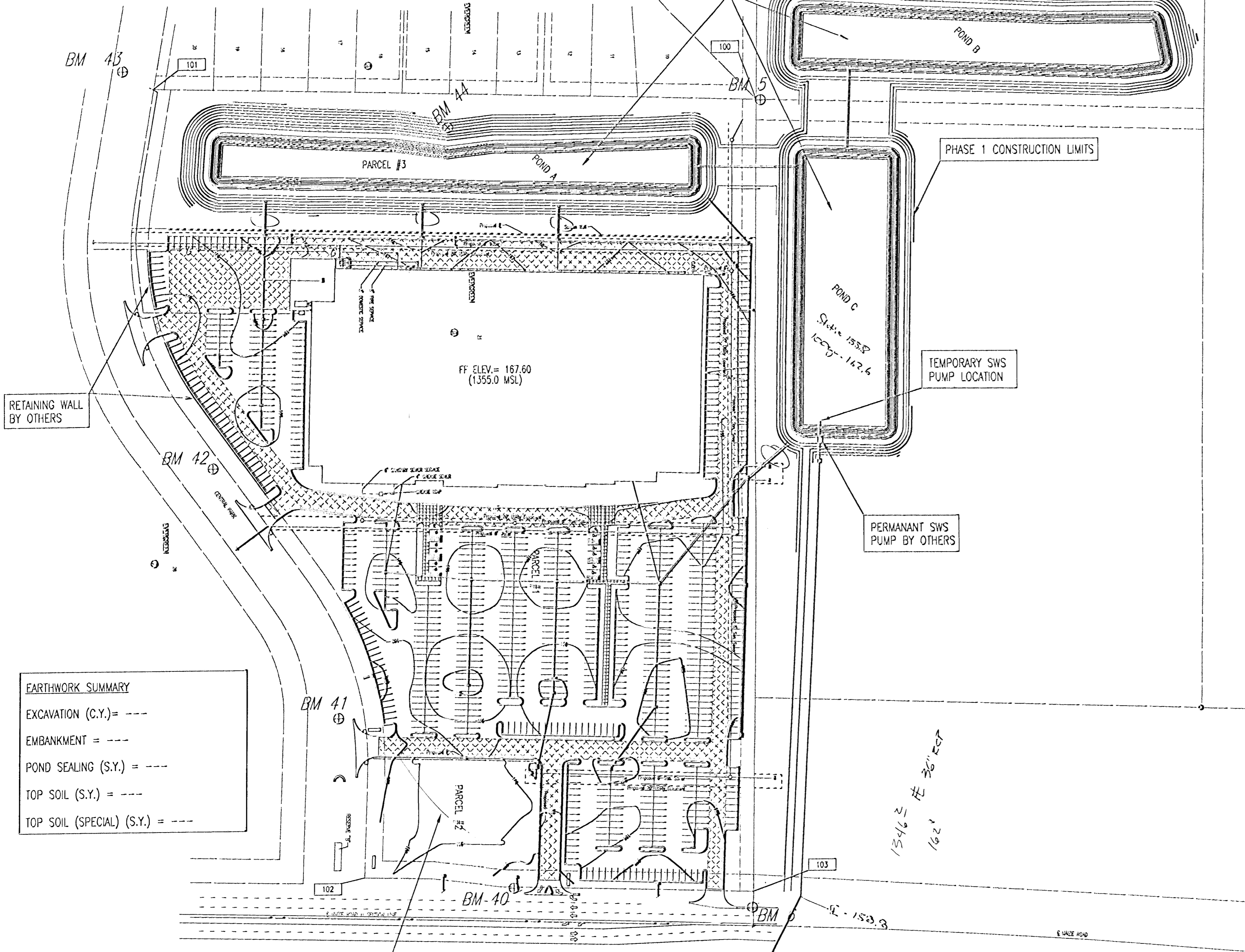
Approved only for conformance of the site construction documents to Target Developer Guide, Edition 2.3 and the Target building documents. Consultant is solely responsible for completeness, accuracy, and dimensions on the site construction documents.



POINT	NORTH	EAST	DESCRIPTION
100	8,954.9287	3,895.5573	NW CORNER OF LOT 21, BLOCK 9
101	8,073.0581	3,873.8894	SW CORNER OF LOT 21, BLOCK 9
102	8,380.4289	5,021.7857	SE CORNER OF LOT 21, BLOCK 9
103	8,950.6661	5,045.7997	NE CORNER OF LOT 21, BLOCK 9

100 = COORDINATE POINT NO.

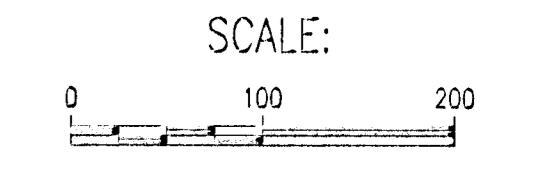
STATIC POOL = 155.8  
DWS 100 = 162.6



EARTHWORK SUMMARY	
EXCAVATION (C.Y.) =	---
EMBANKMENT =	---
POND SEALING (S.Y.) =	---
TOP SOIL (S.Y.) =	---
TOP SOIL (SPECIAL) (S.Y.) =	---

GENERAL NOTES

- ALL ELEVATIONS SHOWN ARE BASED ON CITY OF WICHITA DATUM.
- AT LEAST 72 HOURS PRIOR TO BEGINNING EXCAVATION (EXCLUDING WEEKENDS AND HOLIDAYS), THE CONTRACTOR SHALL CONTACT THE KANSAS ONE-CALL SYSTEM, A UTILITY LOCATION SERVICE, AT (316) 687-2470 TO REQUEST THE LOCAL UTILITY COMPANIES MARK ANY EXISTING LINES WITHIN THE PROJECT AREA.
- UNDERGROUND UTILITY SERVICE LINES AND OVERHEAD UTILITY POLE LINES ARE TO BE ADJUSTED AS NECESSARY BY OTHERS PRIOR TO CONSTRUCTION UNLESS THE PLANS SPECIFICALLY CALL FOR THEIR ADJUSTMENT BY THE CONTRACTOR OR UNLESS THE PLANS SPECIFICALLY IDENTIFY A UTILITY TO BE ADJUSTED BY ITS OWNER DURING CONSTRUCTION. EXISTING UTILITIES AND THEIR LOCATIONS, AS SHOWN ON THE PLANS, REPRESENT THE BEST INFORMATION OBTAINABLE FOR THE DESIGN. THE CONTRACTOR WILL BE REQUIRED TO WORK AROUND EXISTING UTILITIES WITHIN THE RIGHT-OF-WAY WHICH DO NOT CONFLICT WITH PROPOSED CONSTRUCTION.
- THE CONTRACTOR SHALL BE RESPONSIBLE FOR PRESERVING PROPERTY IRONS. THE CONTRACTOR WILL BE REQUIRED TO RE-ESTABLISH ANY PROPERTY IRONS WHICH ARE DAMAGED OR DESTROYED BY HIS CONSTRUCTION OPERATIONS. SUCH IRONS SHALL BE RE-ESTABLISHED BY A LICENSED LAND SURVEYOR IN ACCORDANCE WITH STATE LAWS.
- RUBBLE FROM THE REMOVAL OF MISCELLANEOUS STRUCTURES INCLUDING ANY TREES REMOVED, TREE TRIMMINGS, AND EXCESS EXCAVATION WHICH IS TO BE WASTED SHALL BE DISPOSED OF ON SITES PROVIDED BY THE CONTRACTOR. THESE SITES SHALL ALSO BE APPROVED BY THE ENGINEER AS TO SUITABILITY, APPEARANCE, AND SITE LOCATION. LOCATIONS THAT, IN THE OPINION OF THE ENGINEER, WILL LEAVE AN UNSIGHTLY APPEARANCE WILL NOT BE APPROVED. ALL DISPOSAL SITES MUST BE APPROVED BY THE KANSAS DEPARTMENT OF HEALTH AND ENVIRONMENT. MATERIAL EITHER STOCKPILED OR DISPOSED OF IN A FLOOD PLAIN WILL REQUIRE A KANSAS STATE BOARD OF AGRICULTURE PERMIT. ANY MATERIAL DUMPED IN WATERS OF THE UNITED STATES OR WETLANDS IS SUBJECT TO U.S. CORPS. OF ENGINEERS PERMITTING REGULATIONS. ANY MATERIAL BURIED OR STOCKPILED BEYOND APPROVED CONSTRUCTION LIMITS MAY REQUIRE ARCHAEOLOGICAL INVESTIGATIONS UNLESS BURIED IN A PREVIOUSLY APPROVED DISPOSAL LOCATION.
- THE CONTRACTOR SHALL AVOID REMOVAL OR TRIMMING OF ANY TREES OR SHRUBS WHERE POSSIBLE. WHERE THE CONTRACTOR BELIEVES THE REMOVAL OR TRIMMING IS UNAVOIDABLE, HE SHALL COORDINATE SUCH WORK WITH THE ENGINEER.
- THE CONTRACTOR SHALL ABIDE BY THE PROVISIONS OF THE STORM WATER POLLUTION PREVENTION PLAN DURING CONSTRUCTION AND SHALL EXECUTE A CONTRACTOR CERTIFICATION FOR PRIOR TO CONSTRUCTION. THE CONTRACTOR SHALL BE RESPONSIBLE FOR MAINTAINING EROSION CONTROL MEASURES UNTIL A WRITTEN RELEASE TRANSFER OF RESPONSIBILITY IS ISSUED BY THE OWNER.
- TREES AND DEBRIS SHOWN TO BE REMOVED OR IN CONFLICT WITH PROPOSED CONSTRUCTION SHALL BE REMOVED AND DISPOSED OF OFF-SITE IN AN APPROVED MANNER. TREES NOT SHOWN TO BE REMOVED SHALL BE SPARED AND PROTECTED DURING CONSTRUCTION.
- THESE PLANS WERE PREPARED ON THE BASIS THAT ALL FILL MATERIAL WILL BE PROVIDED FROM THE SITE OR FROM A BORROW SOURCE ADJACENT TO THE SITE. THE SIZE OF THE PROPOSED PONDS SHALL BE BASED UPON FILL REQUIRED TO CONSTRUCT THE PROPOSED EMBANKMENTS. IF ADDITIONAL MATERIAL IS REQUIRED BEYOND THE LIMITS SHOWN FOR THE PROPOSED PONDS, POND C SHALL BE EXTENDED TO THE NORTH BY FULL EXCAVATION TO THE PROPOSED BOTTOM ELEVATION. EXPANSION OF POND C SHALL NOT RELIEVE THE CONTRACTOR OF THE REQUIREMENT TO SEAL THE POND.
- TOP SOIL (SPECIAL) SHALL NOT BE APPLIED TO THE NORTH END OF POND C.
- ACCESS TO THE SITE SHALL BE RESTRICTED TO ONE OR BOTH OF THE EXISTING ENTRANCES OFF MAIZE ROAD. A CONSTRUCTION ENTRANCE SHALL BE CONSTRUCTED PRIOR TO USE OF EITHER ENTRANCE.
- CONSTRUCTION TOLERANCE FOR THE PROPOSED PARKING LOT SUBGRADE SHALL BE 0" TO +5".
- CONSTRUCTION TOLERANCE FOR THE BUILDING PAD SHALL BE 0" TO +1".
- A GEOTECHNICAL REPORT IS AVAILABLE FOR INSPECTION.



CONSTRUCTION SEQUENCE

- PRIOR TO CONSTRUCTION, INCLUDING CLEARING AND MOBILIZATION, A CONSTRUCTION ENTRANCE AND PERIMETER SILT BARRIER SHALL BE INSTALLED.
- CONSTRUCT SILT BASIN.
- CONSTRUCT DITCH FROM 36" PIPE UNDER MAIZE ROAD TO PROPOSED TEMPORARY PUMP LOCATION.
- EXCAVATE PIT AS REQUIRED TO PUMP RETAINED STORM WATER BELOW ELEVATION 158.8 TO ELEVATION 155.8 AND INSTALL PUMP. THE PUMP SHALL HAVE THE CAPACITY TO RESTORE FULL DETENTION TO THE PONDS WITHIN 4 DAYS AFTER WATER HAS RECEDED TO ELEVATION 158.8. (APPROXIMATELY 2000 GAL/MIN UPON COMPLETION OF POND EXCAVATION.)
- CLEAR SITE AND DEWATER EXISTING POND. (PLUG EXISTING 24" PIPE UNDER CENTRAL PARK.)
- EXCAVATE POND A AND BEGIN FILLING EXISTING POND. MAINTAIN GRAVITY FLOW TO TEMPORARY PUMP. (INSTALL 24" INTERCONNECT PIPE WHEN APPROPRIATE.)
- UPON COMPLETION OF POND A AND POND SEALING, STRIP TOP SOIL (SPECIAL) FROM POND C AND INSTALL AROUND POND A AS SHOWN. PLACE TOP SOIL FROM SITE STRIPPINGS AROUND POND A AND SEED.
- EXCAVATE POND B MAINTAINING GRAVITY FLOW AS DESCRIBED ABOVE.
- FILL PLACEMENT SHALL BE EXPEDITED IN THE EXISTING POND, THE PROPOSED BUILDING PAD, AND IN AREAS CRITICAL TO UTILITY CONSTRUCTION TO SERVE THE BUILDING PAD. THIS PORTION OF THE SITE SHALL BE TURNED OVER TO UTILITY CONSTRUCTION AT THE EARLIEST OPPORTUNITY. THE CONTRACTOR SHALL COORDINATE HIS WORK TO ALLOW UTILITY CONSTRUCTION TO SERVE THE PAD CONCURRENTLY WITH FILL PLACEMENT EAST OF THE PAD.
- POND B SHALL BE SEALED, TOP SOILED, AND SEEDED PRIOR TO OR CONCURRENTLY WITH THE CONSTRUCTION OF POND C.
- THE CONTRACTOR SHALL COORDINATE HIS WORK WITH STORM SEWER CONSTRUCTION SUCH THAT POSITIVE DRAINAGE ACROSS THE SITE IS MAINTAINED AT ALL TIMES. THIS MAY REQUIRE THE SUSPENSION OF EARTHWORK OPERATIONS DURING STORM SEWER CONSTRUCTION.
- THE CONTRACTOR SHALL MAINTAIN TEMPORARY PUMP CAPACITY UNTIL THE PROPOSED PERMANENT PUMP IS OPERATIONAL.

BENCHMARKS

- Benchmark #5: 1" Post Set near N.E. cor Evergreen, S' N. of E-W fence line, and in line with fence to south. Elev.=161.83 C.O.W. =1349.23 M.S.L.
- Benchmark #6: Chiseled "d" on top back curb, W. curb line of Maize Rd. at beginning of curb 1/4 mile S. of 29th St. N. Elev.=164.515 C.O.W. 1351.915 M.S.L.
- Benchmark #40: RR Spike in W. face of 2nd power pole N. of Central Park St., on W. side of Maize Rd. Elev.=164.57
- Benchmark #41: Chiseled "d" on W. end median in Central Park St. on W. side of Maize Rd. Elev.=163.32
- Benchmark #42: Chiseled "d" on N. top of curb Central Park St. Approx. 650' W. of Maize Rd. Elev.=164.03
- Benchmark #43: Chiseled "d" on S. top of curb Central Park St. 15' W. and 47' S. of SW Corner Lot 21, Block 9 Elev.=165.00
- Benchmark #44: Chiseled "X" on N. rim S.S. Manhole (E. of 2 manholes), 1000' W. of E. Maize Rd. and 450' N. of E. Central Park St. Elev.=164.75



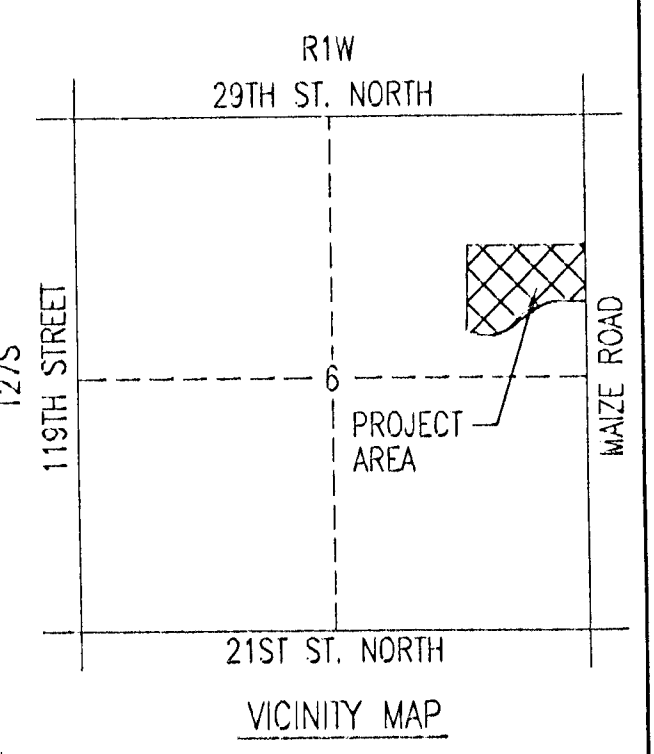
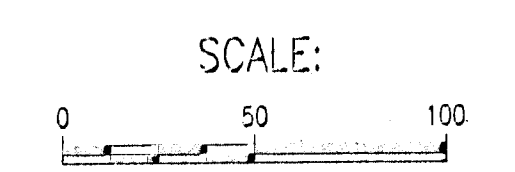
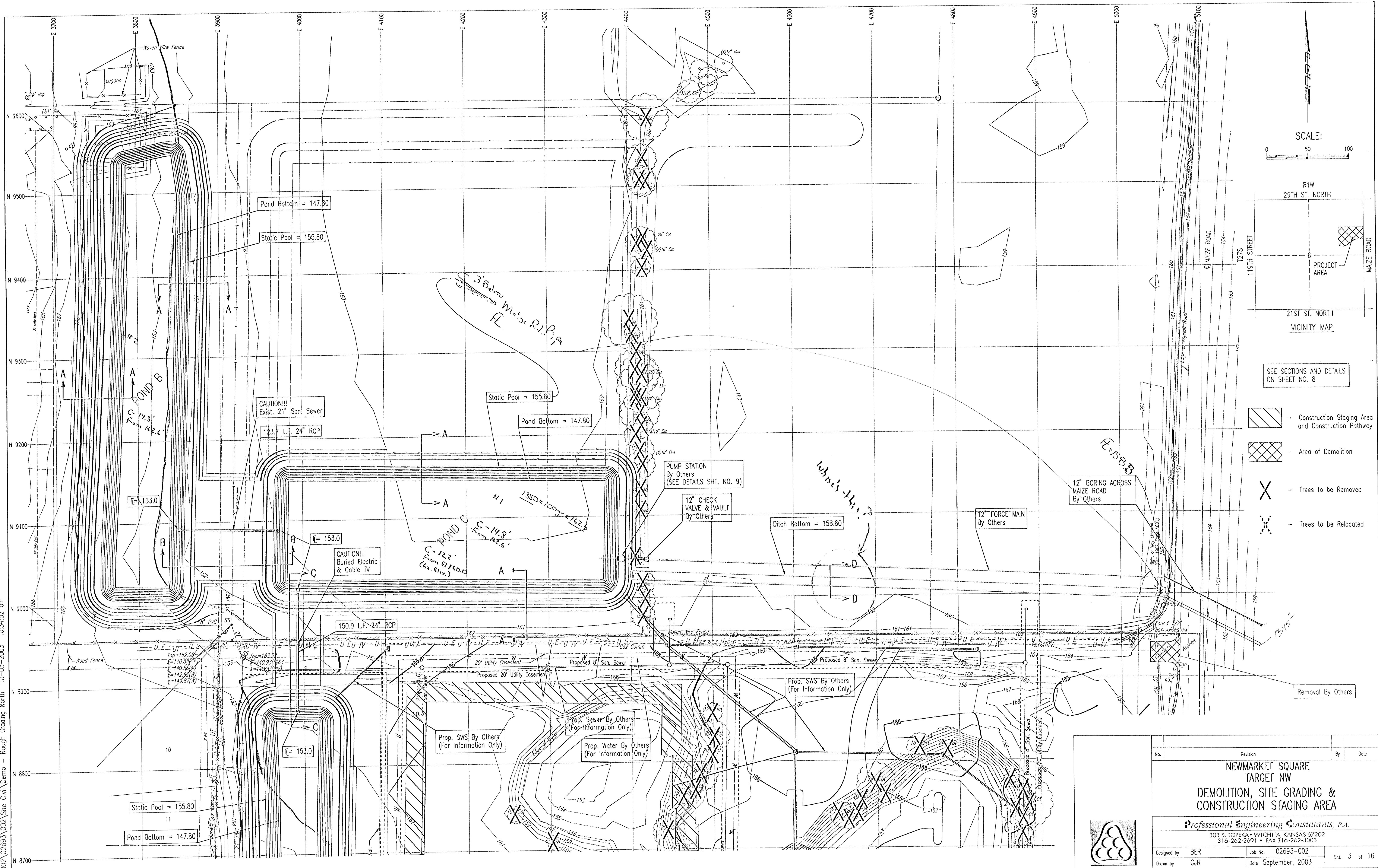
REVIEWED BY:

Site Development Manager	___	Revisa and Resubmit	___	Not Reviewed	___	Approved	___
Project Architect	___	Revisa and Resubmit	___	Not Reviewed	___	Approved	___
Project Engineer (M)	___	Revisa and Resubmit	___	Not Reviewed	___	Approved	___
Project Engineer (E)	___	Revisa and Resubmit	___	Not Reviewed	___	Approved	___
Project Engineer (S)	___	Revisa and Resubmit	___	Not Reviewed	___	Approved	___

Approved only for conformance of the site construction documents to Target Developer Guide, Edition 2.3 and the Target building documents. Consultant is solely responsible for completeness, accuracy, and dimensions on the site construction documents.

No.	Revision	By	Date
<b>NEWMARKET SQUARE TARGET NW PROPOSED OVERALL SITE PLAN</b>			
<b>Professional Engineering Consultants, P.A.</b> 303 S. TOPEKA • WICHITA, KANSAS 67202 316-262-2691 • FAX 316-262-3003			
Designed by	BER	Job No.	02693-002
Drawn by	GJR	Date	September, 2003
			Sht. 2 of 16

DSNR: BER OPER. CJR SCALE: 1"=50.00  
 C:\2002\02693\002\Site Civil\Demo - Rough Grading North 10-03-2003 10:34:52 am



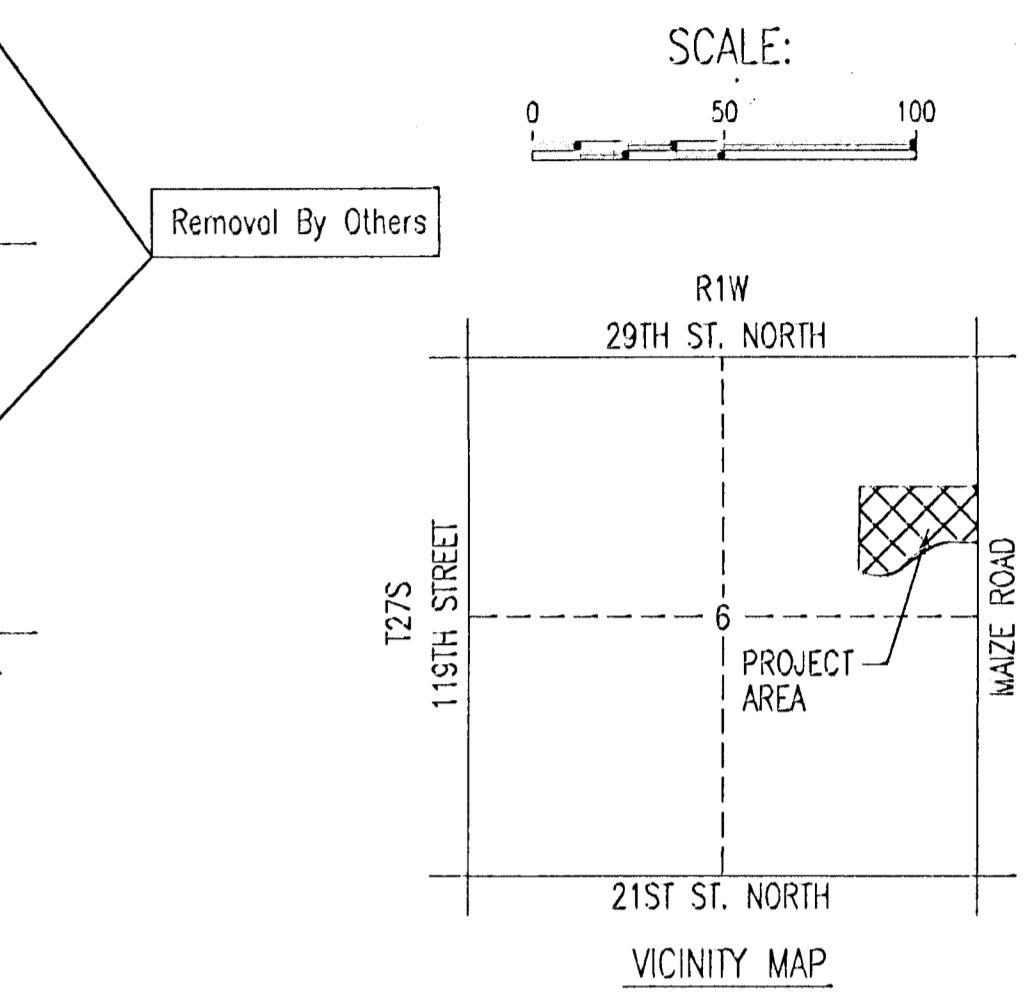
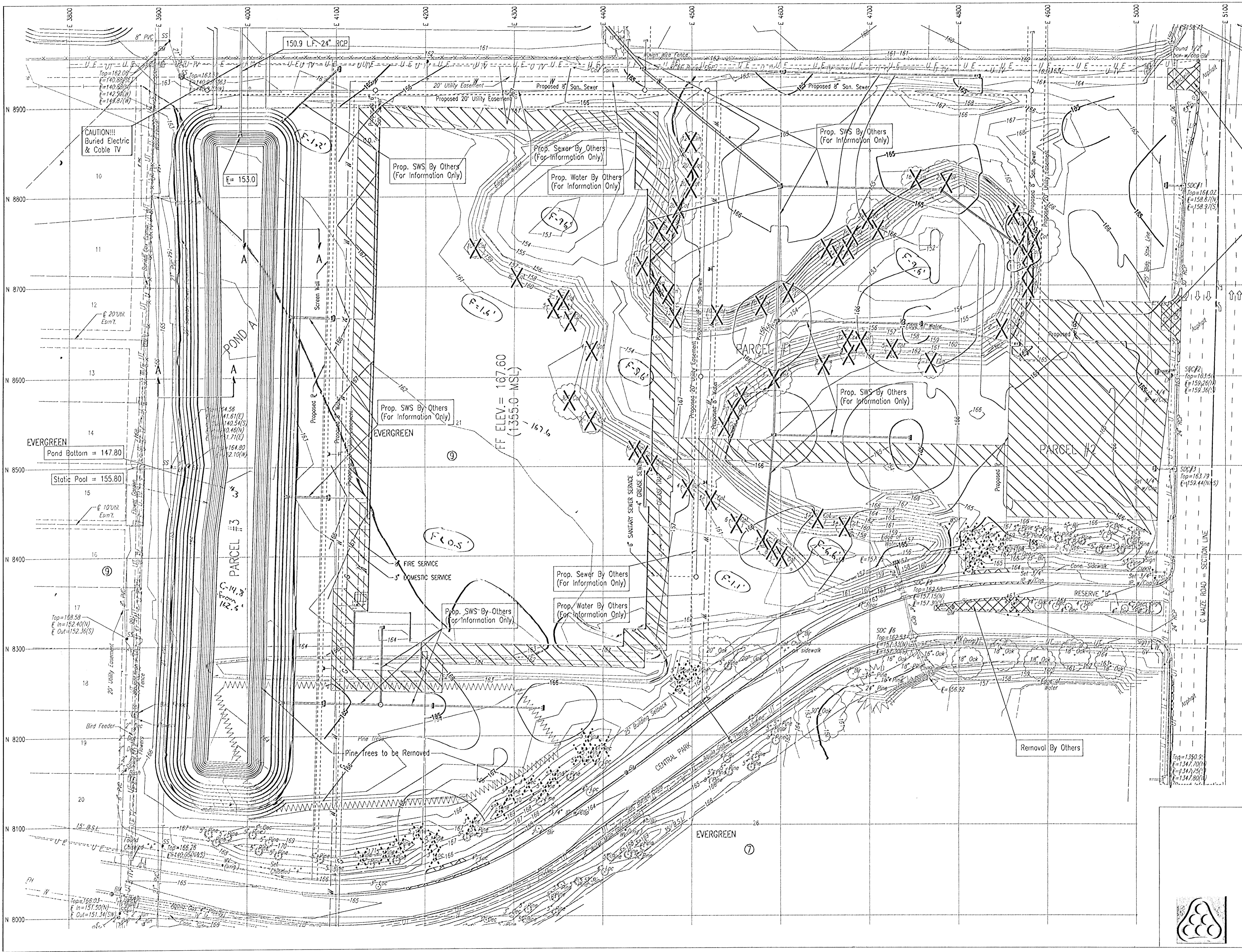
SEE SECTIONS AND DETAILS ON SHEET NO. 8

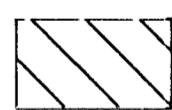



- Construction Staging Area and Construction Pathway
- Area of Demolition
- Trees to be Removed
- Trees to be Relocated

Removal By Others

No.	Revision	By	Date
<b>NEWMARKET SQUARE            TARGET NW            DEMOLITION, SITE GRADING &amp;            CONSTRUCTION STAGING AREA</b>			
<b>Professional Engineering Consultants, P.A.</b> 303 S. TOPEKA • WICHITA, KANSAS 67202 316-262-2691 • FAX 316-262-3003			
Designed by	BER	Job No.	02693-002
Drawn by	CJR	Date	September, 2003
			Sht. 3 of 16

USNR: BER UPER LWR SCALE: 1"=50.00'  
 G:\2002\02693\002\Site Civil\Demo - Rough Grading South 10-03-2003 10:35:33 am



- SEE SECTIONS AND DETAILS ON SHEET NO. 8
-  - Construction Staging Area and Construction Pathway
  -  - Area of Demolition
  -  - Trees to be Removed
  -  - Trees to be Relocated By Others

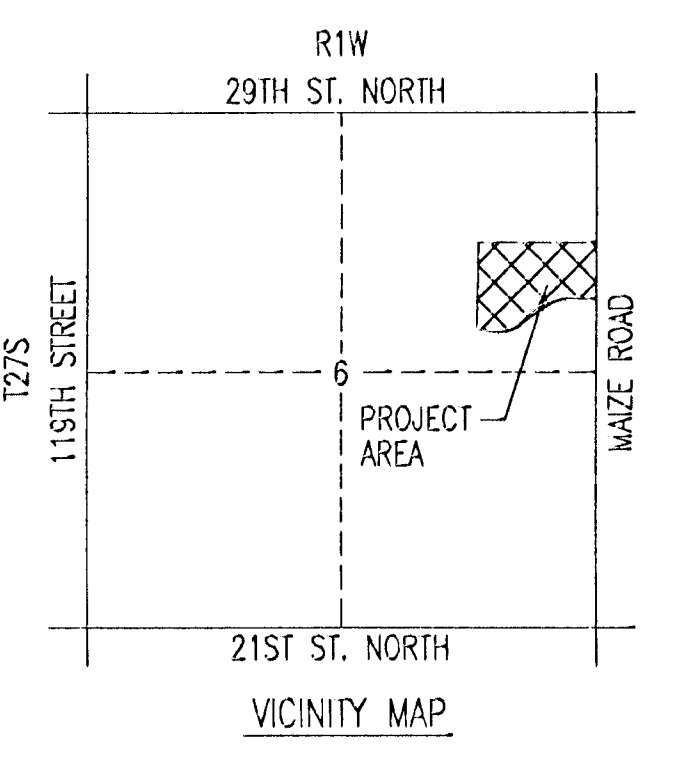
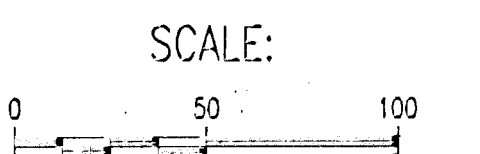
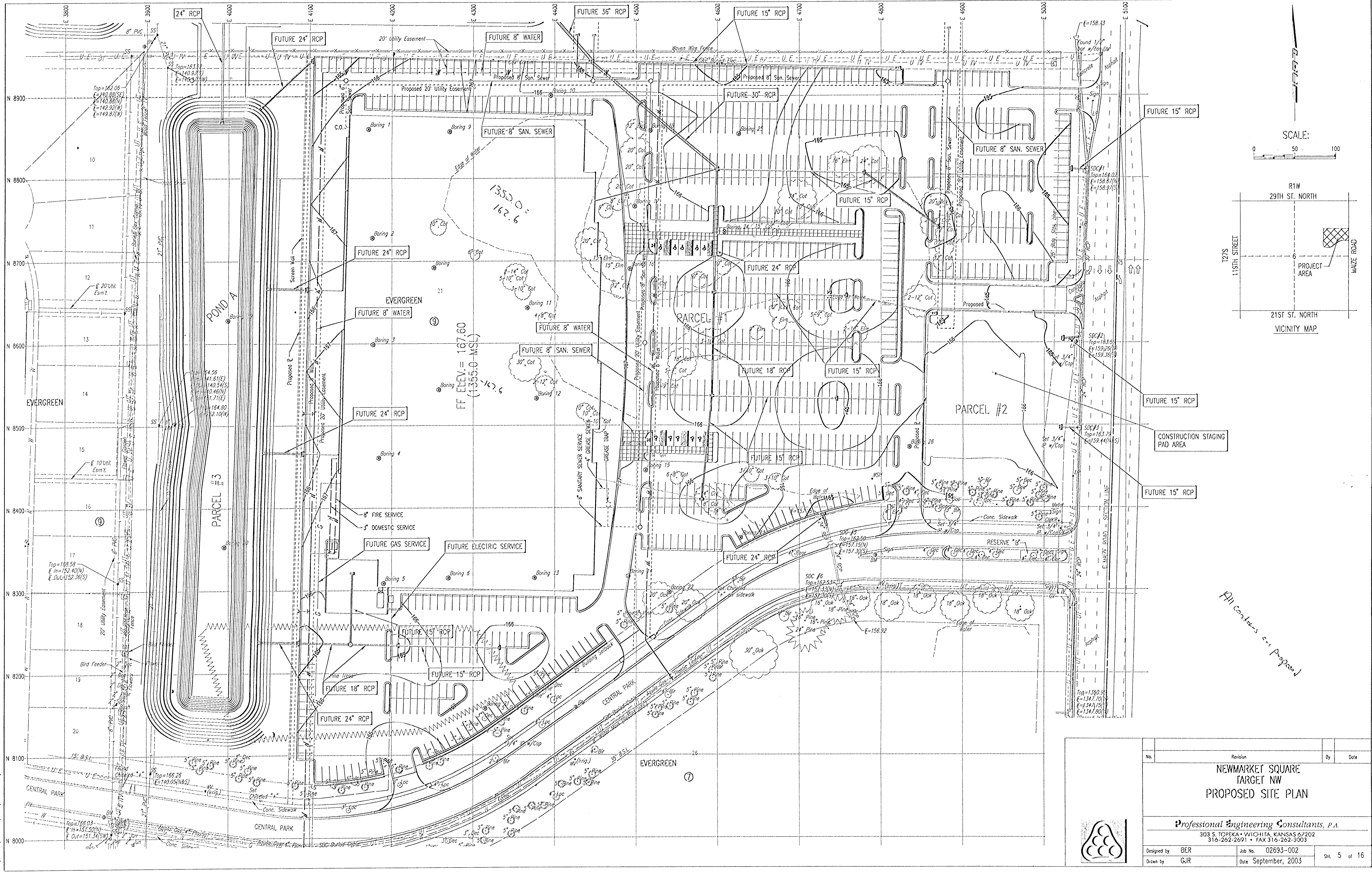
No.	Revision	By	Date

**NEWMARKET SQUARE  
 TARGET NW  
 DEMOLITION, SITE GRADING &  
 CONSTRUCTION STAGING AREA**

**Professional Engineering Consultants, P.A.**  
 303 S. TOPEKA • WICHITA, KANSAS 67202  
 316-262-2671 • FAX 316-262-3003

Designed by BER	Job No. 02693-002	Sht. 4 of 16
Drawn by GJR	Date September, 2003	

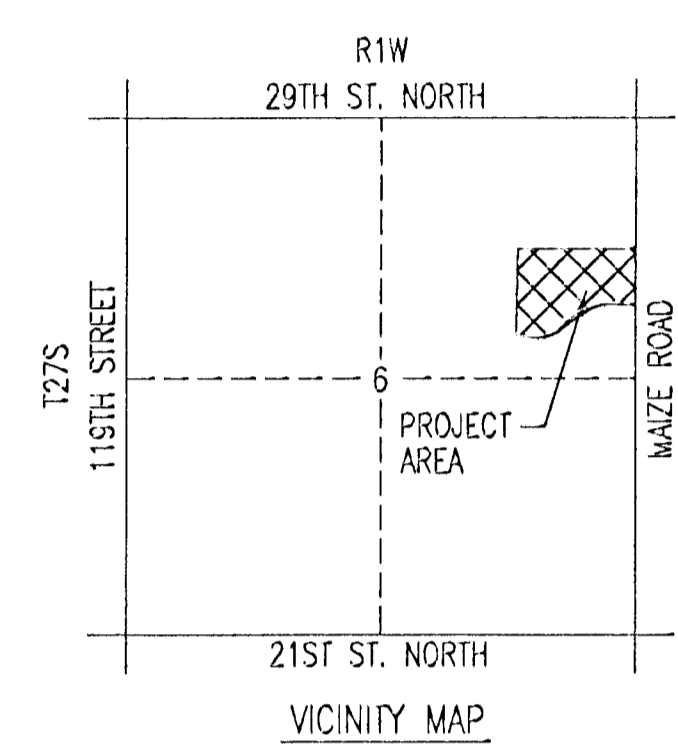
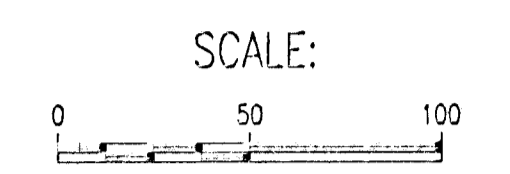
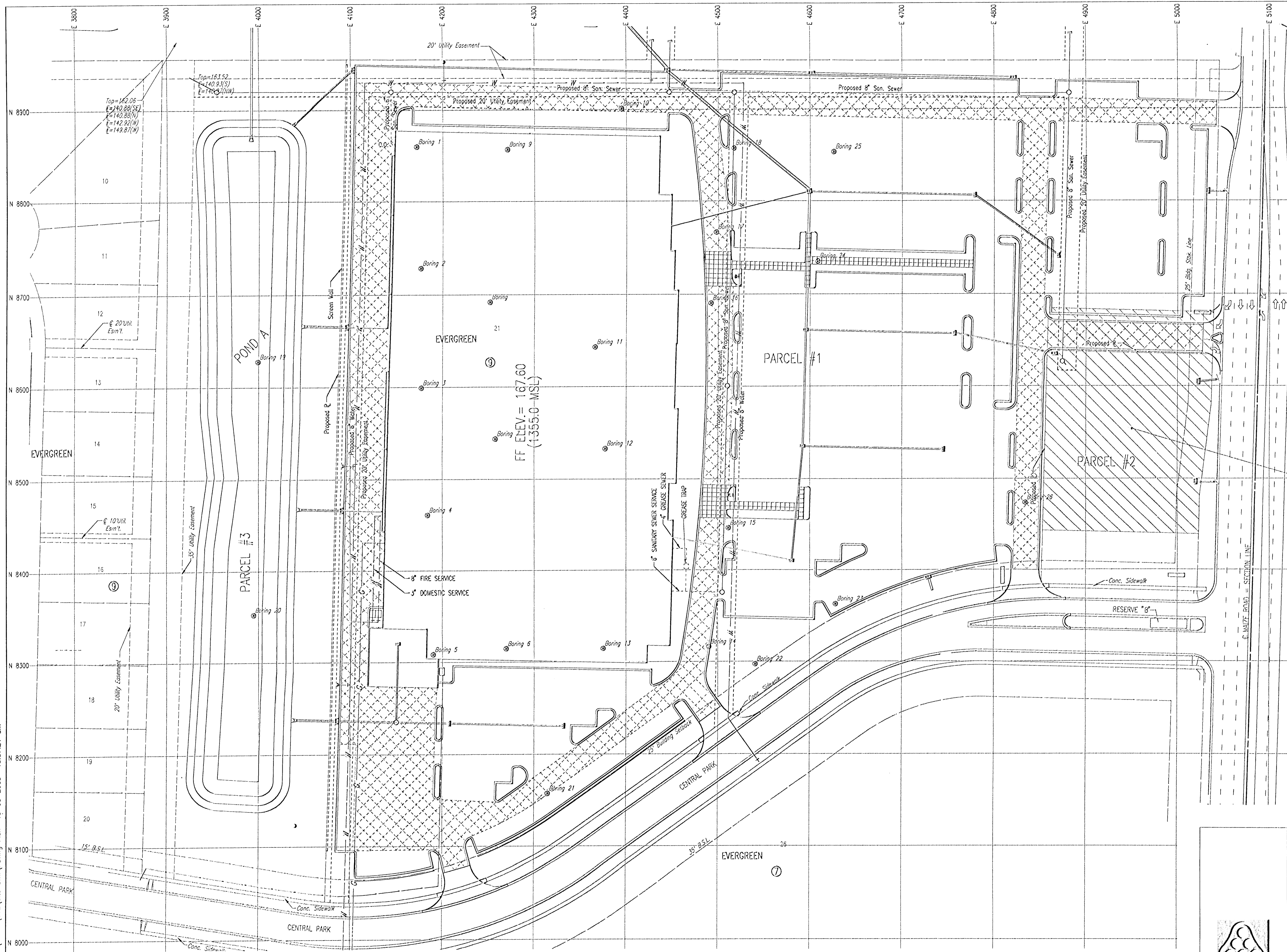
DSNR: BER OPER: GJR SCALE: 1"=50.00  
 Q:\2002\02693\002\Site Civil\Site Plan 10-03-2003 10:36:40 am



*All contours are proposed*

No.	Revision	By	Date
<b>NEWMARKET SQUARE            TARGET NW            PROPOSED SITE PLAN</b>			
<b>Professional Engineering Consultants, P.A.</b> 303 S. TOPEKA • WICHITA, KANSAS 67202 316-262-2691 • FAX 316-262-3003			
Designed by	BER	Job No.	02693-002
Drawn by	GJR	Date	September, 2003
			Sht. 5 of 16

DSNR: BER OPER: GJR SCALE: 1"=50.00  
 Q:\2002\02653\002\Site Civil\ paving Plan 10-03-2003 10:37:21 am

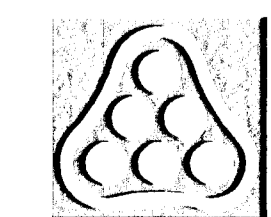


Construction Staging Pad Area

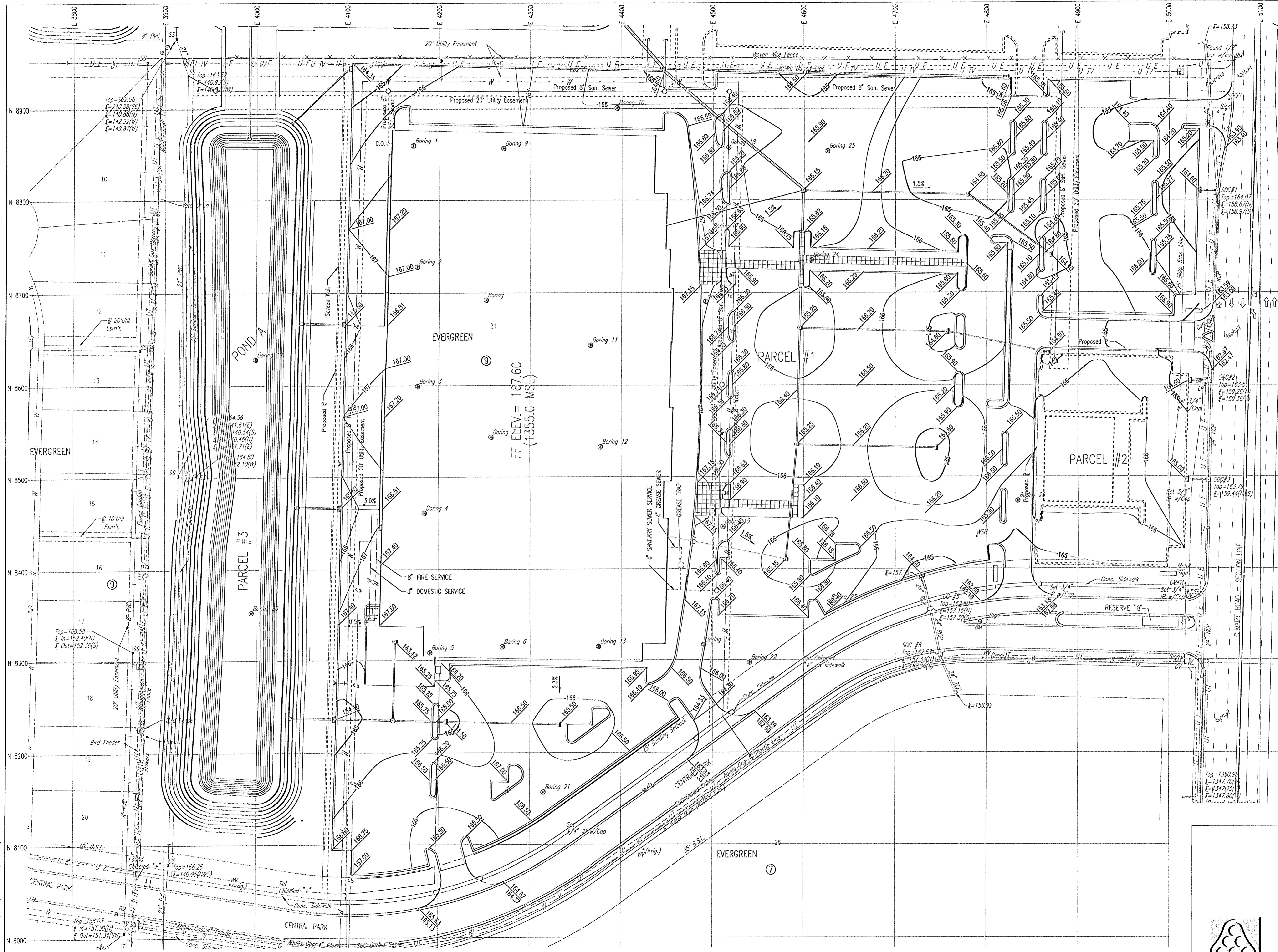
All Pavement to be 5" A.C. except as noted.

Heavy Duty Pavement (7" A.C.)

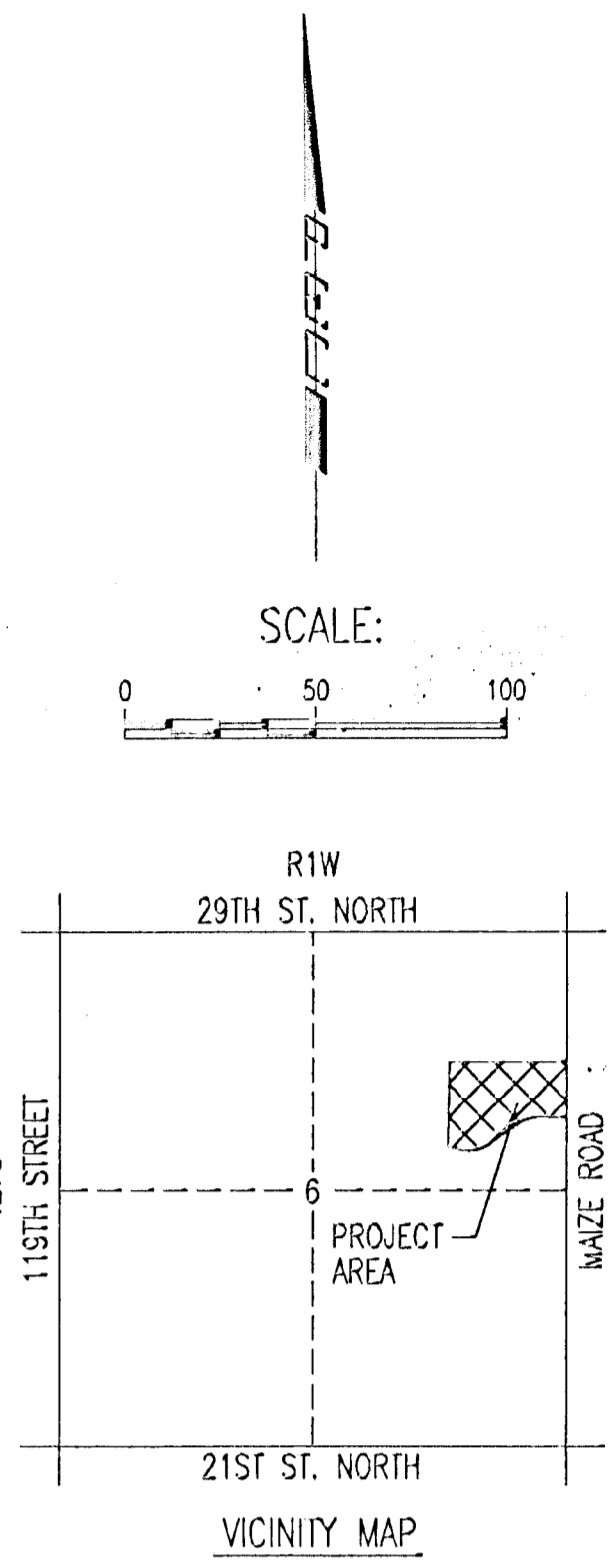
No.	Revision	By	Date
<b>NEWMARKET SQUARE            TARGET NW            PROPOSED PAVING LAYOUT PLAN</b>			
<b>Professional Engineering Consultants, P.A.</b> 303 S. TOPEKA • WICHITA, KANSAS 67202 316-262-2671 • FAX 316-262-3003			
Designed by	BER	Job No.	02693-002
Drawn by	GJR	Date	September, 2003
			Sht. 6 of 16



DSNR: BER OPER\_GJR SCALE: 1=50.00  
 G:\2002\02693\002\Site Civil\Grading Plan 10-03-2003 10:38:21 am



NOTE:  
 ELEVATIONS SHOWN ARE  
 TOP OF PAVEMENT

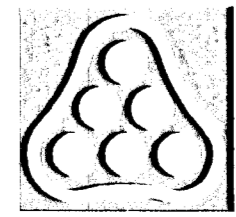


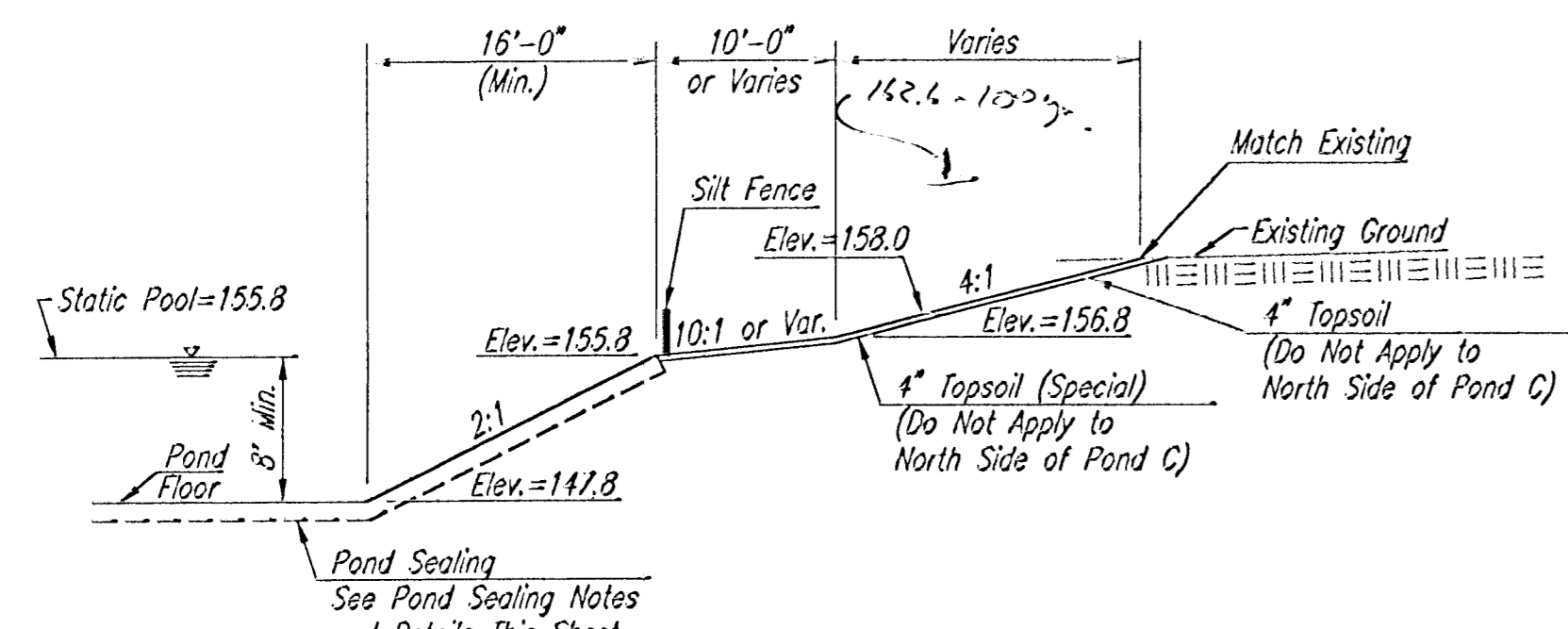
No.	Revision	By	Date

**NEWMARKET SQUARE  
 TARGET NW  
 PROPOSED PAVING SPOT ELEVATION PLAN**

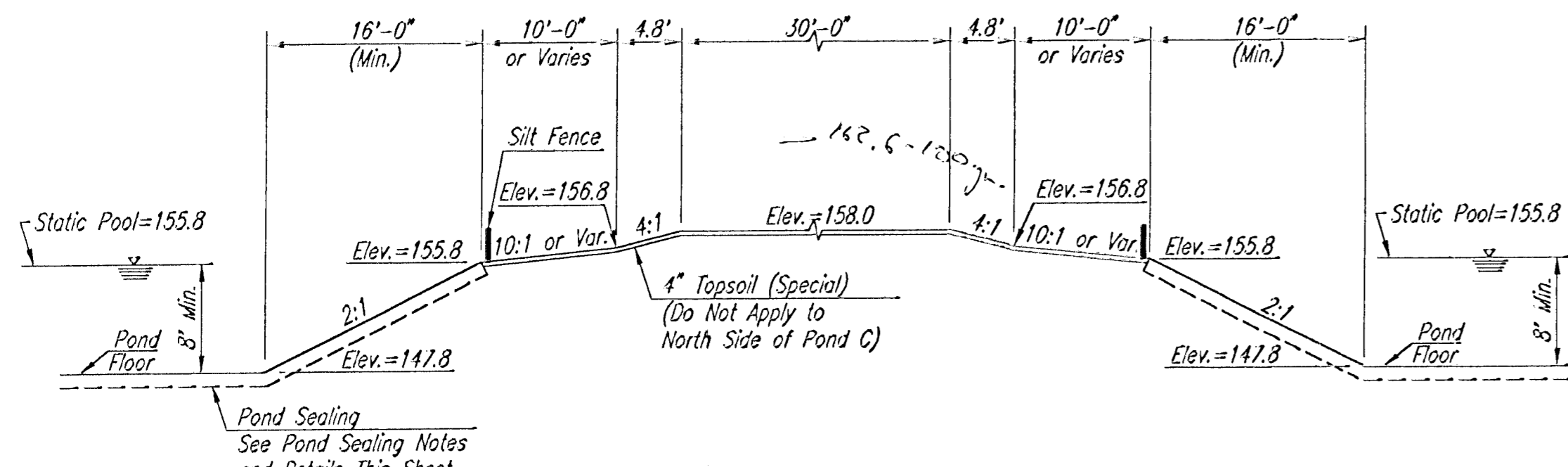
**Professional Engineering Consultants, P.A.**  
 303 S. TOPEKA • WICHITA, KANSAS 67202  
 316-262-2691 • FAX 316-262-3003

Designed by BER	Job No. 02693-002	Sht. 7 of 16
Drawn by GJR	Date September, 2003	

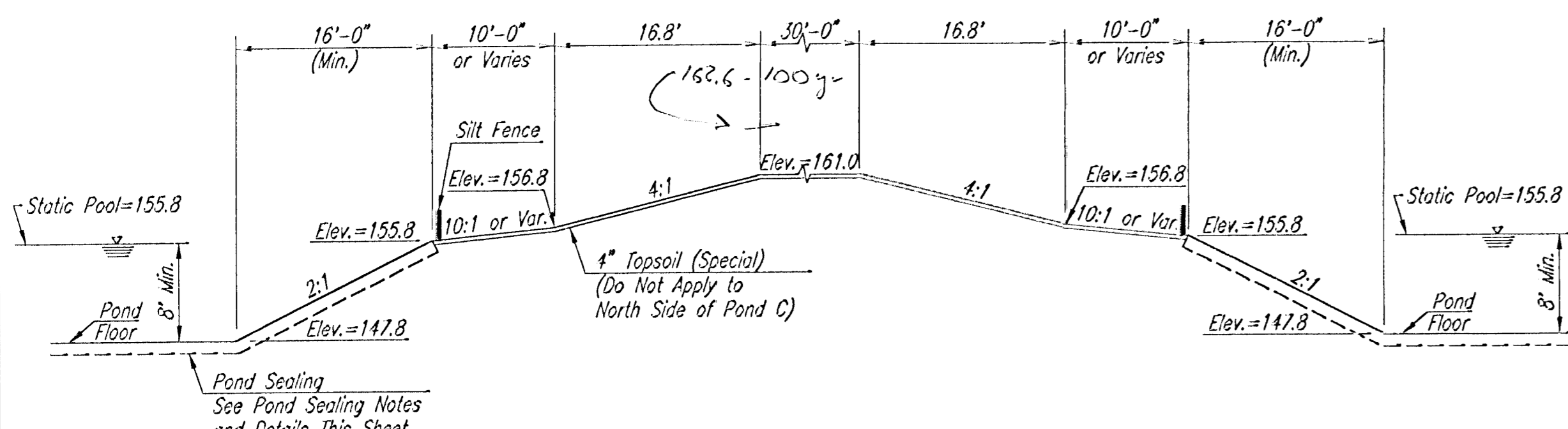




SECTION A-A

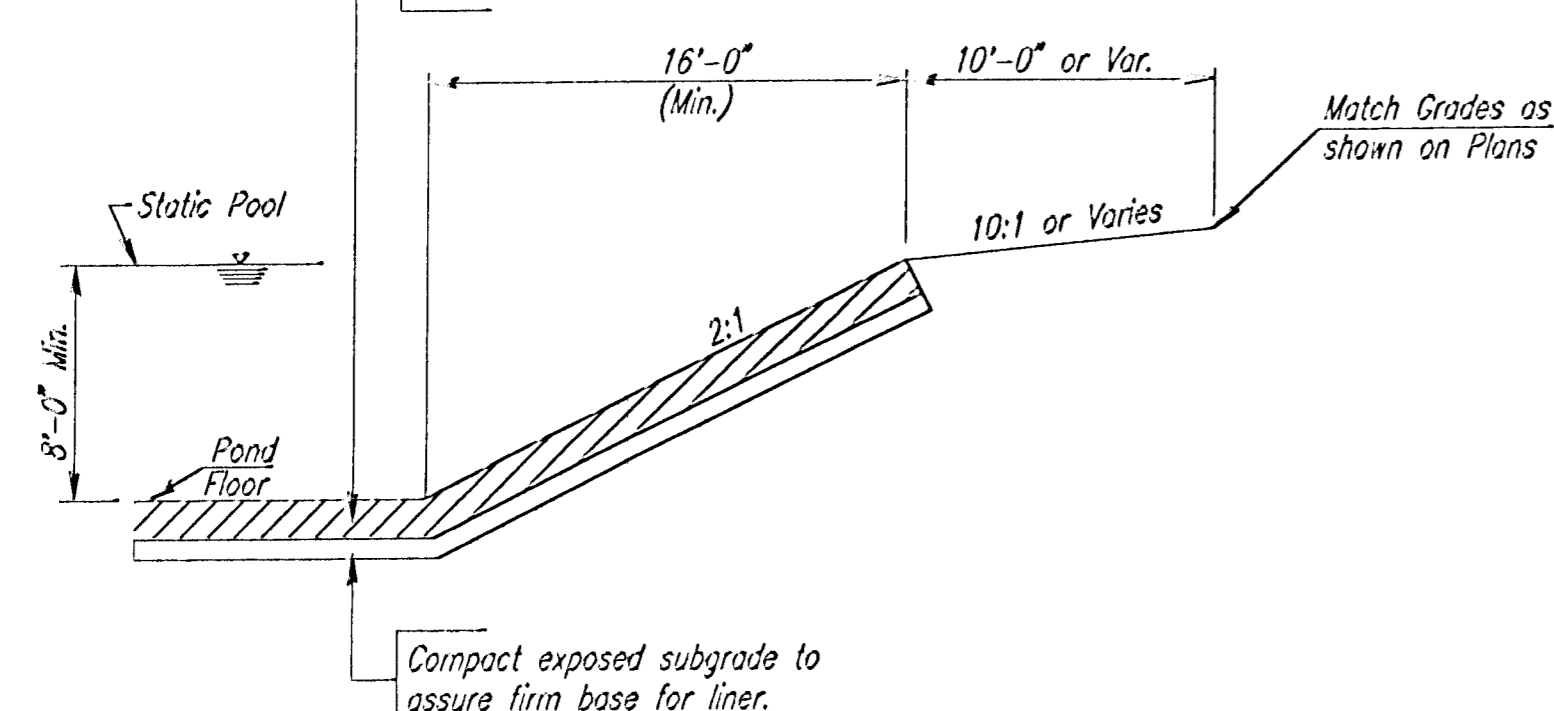


SECTION B-B

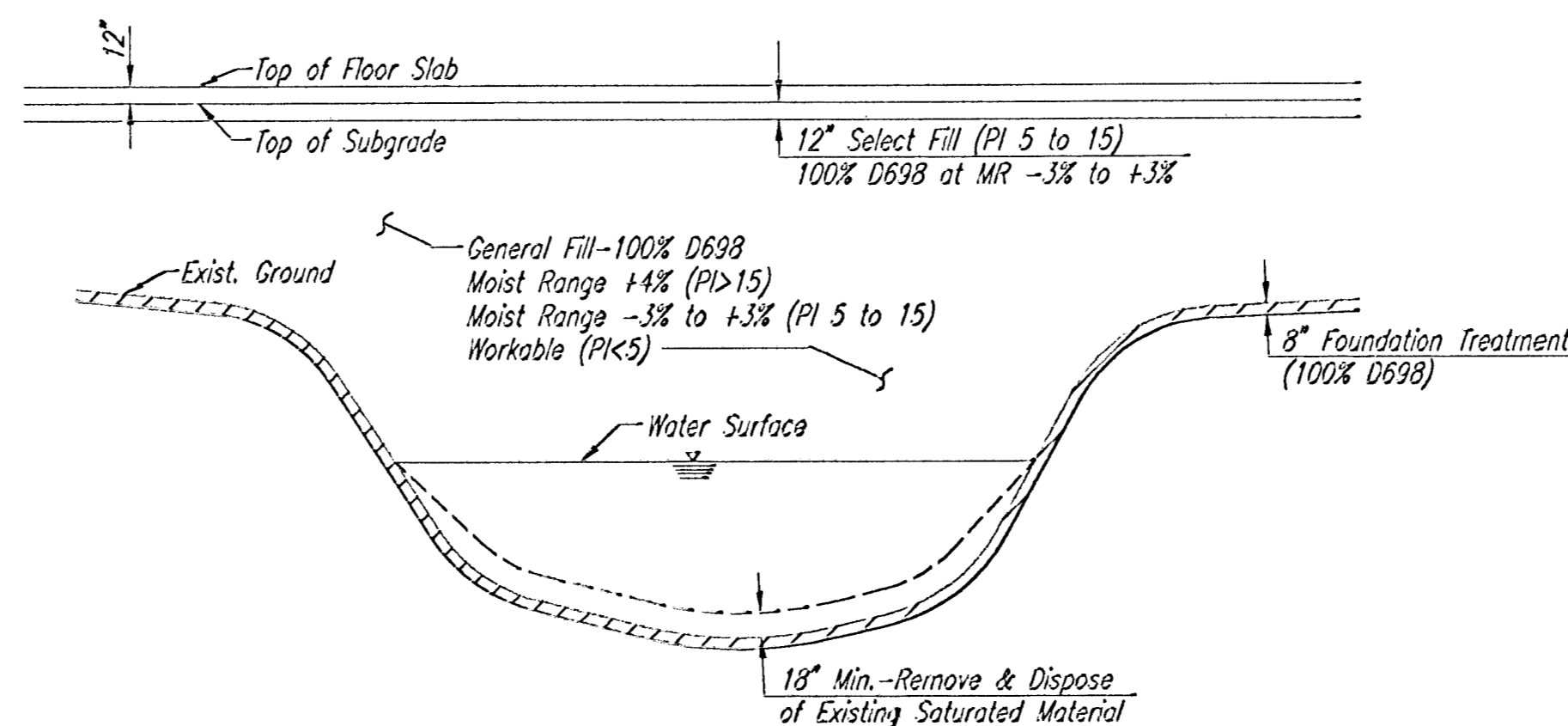


SECTION C-C

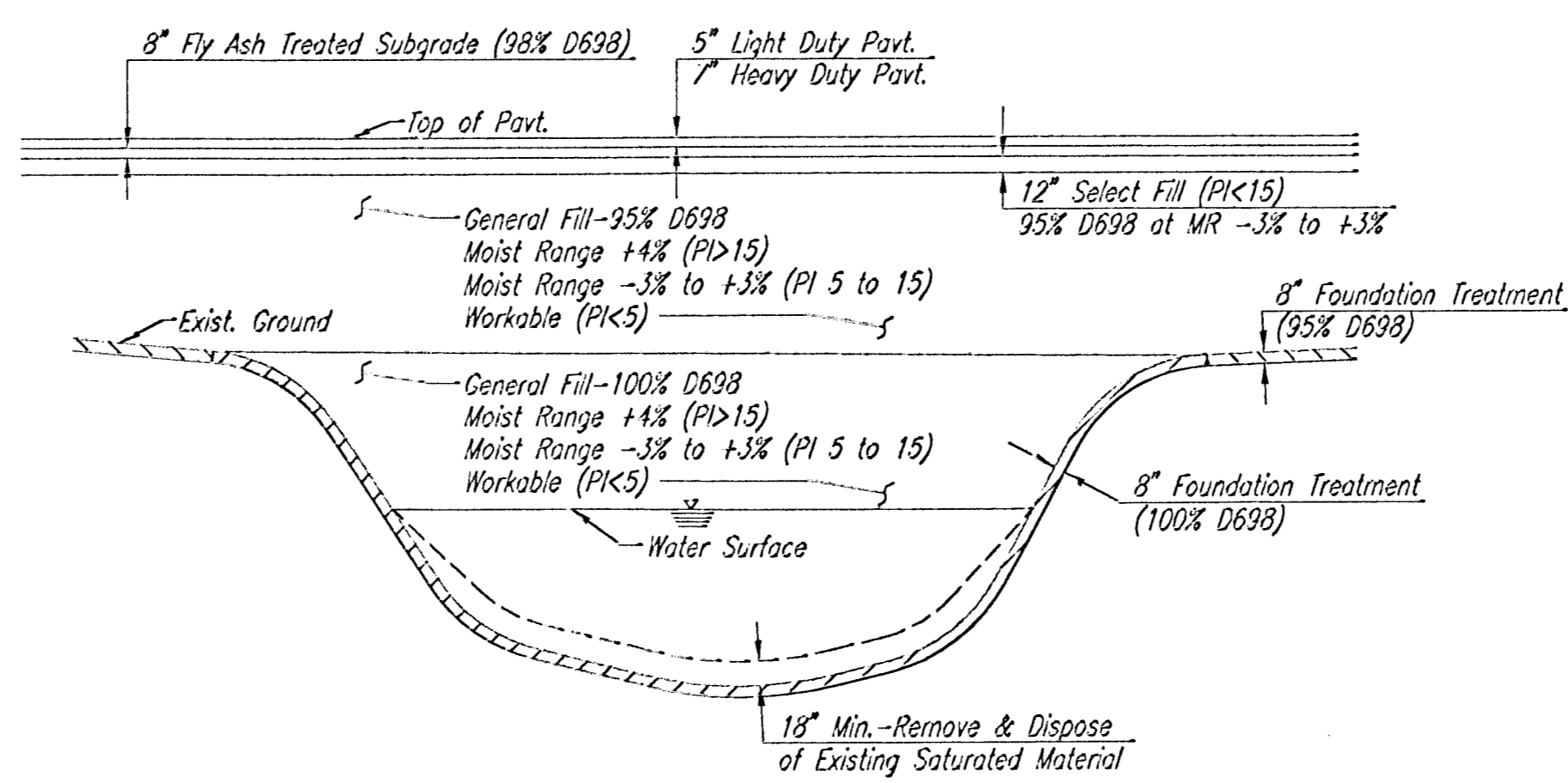
1. Construct 12 inches clay liner.
2. On-site high plasticity clay (PI>25) may be used.
3. Construct liner in two 6-inch lifts.
4. Compact to 95% of Standard Proctor Density (ASTM D-698).
5. Control moisture 0 to plus 4% of optimum moisture content.



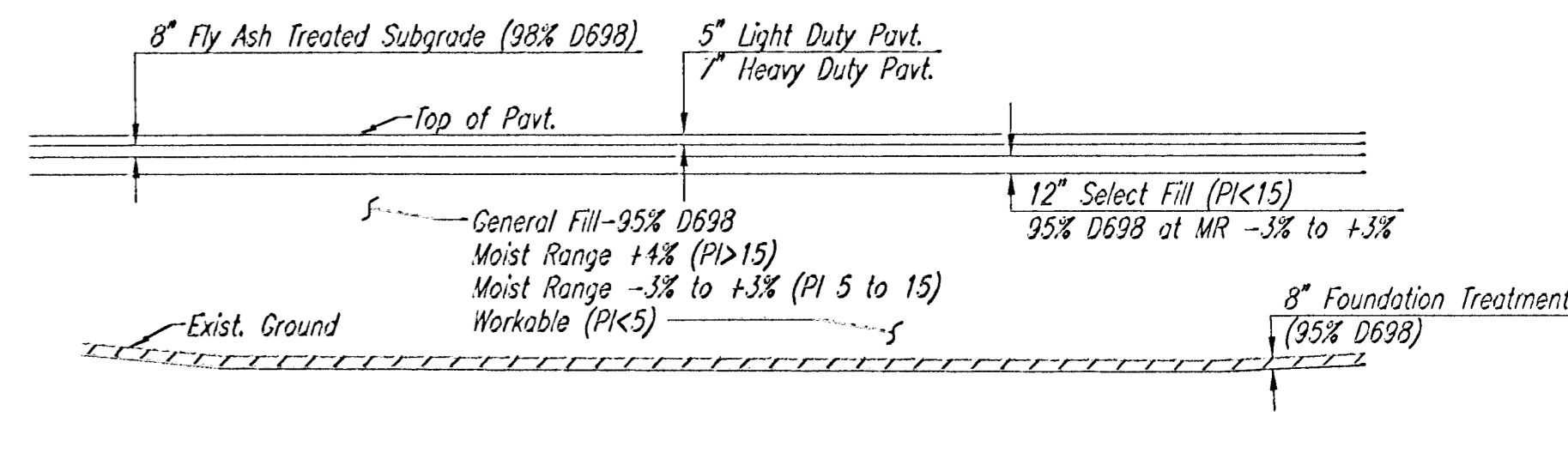
CLAY LINER CONSTRUCTION PROCEDURE FOR POND SEALING



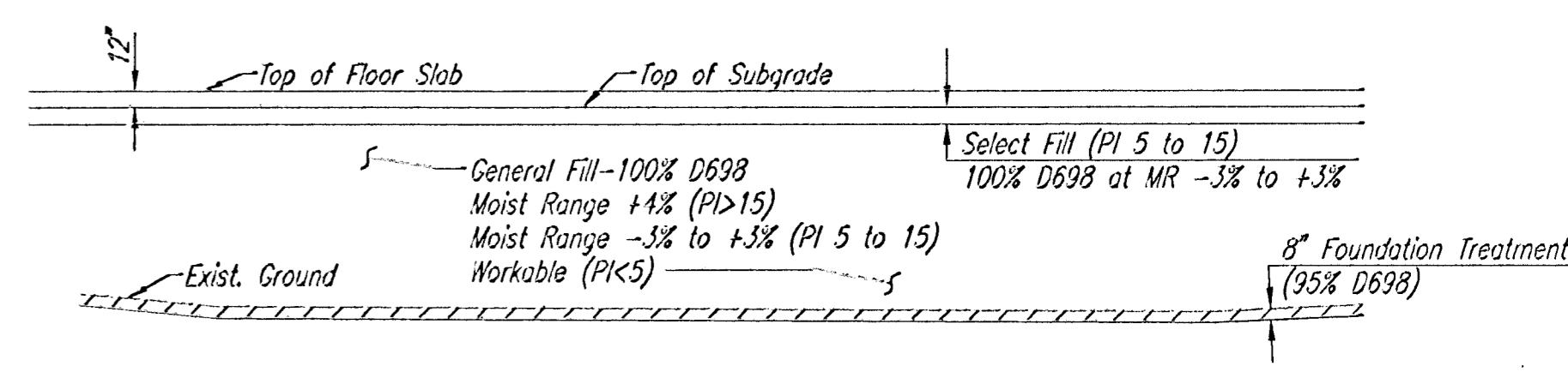
COMPACTION DIAGRAM THRU EXIST. POND UNDER BUILDING PAD



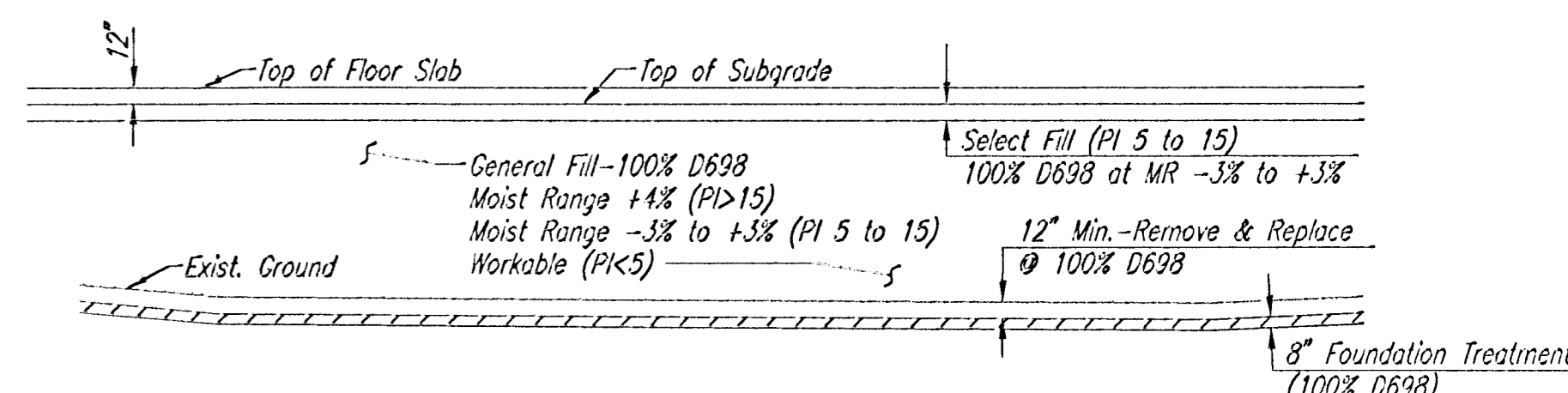
COMPACTION DIAGRAM THRU EXIST. POND UNDER PAVEMENT



COMPACTION DIAGRAM PAVED AREAS OUTSIDE EXIST. POND



COMPACTION DIAGRAM UNDER BUILDING PAD OUTSIDE EXIST. POND



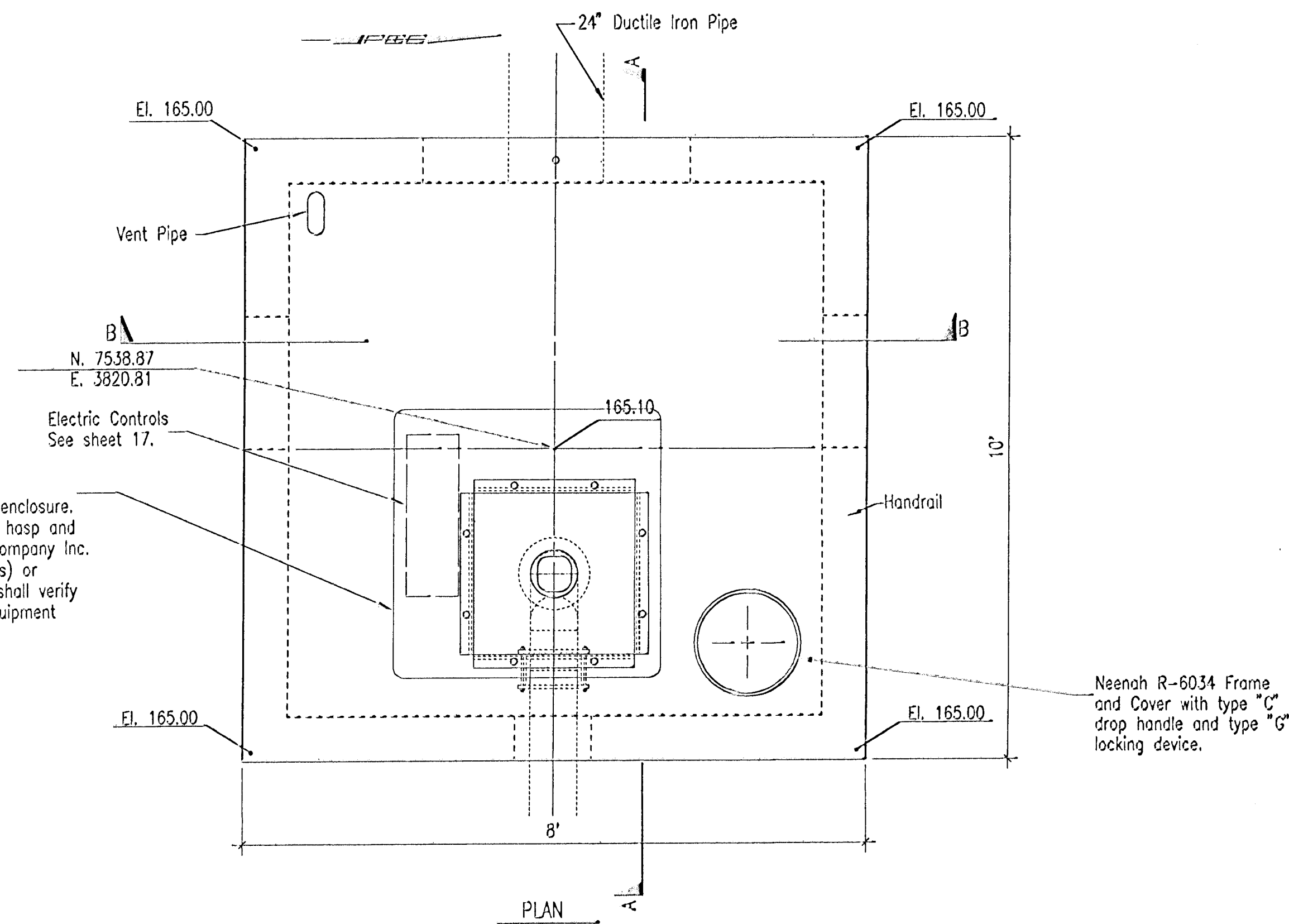
COMPACTION DIAGRAM STAGING AREAS

USNR: BER UPRR: GJR SCALE: 1"=10'-0" DATE: 10-03-2003 10:39:12 am  
 C:\2002\02693\002\Site Civil\p002.ctb

1/27/03  
1/28/03  
1/29/03

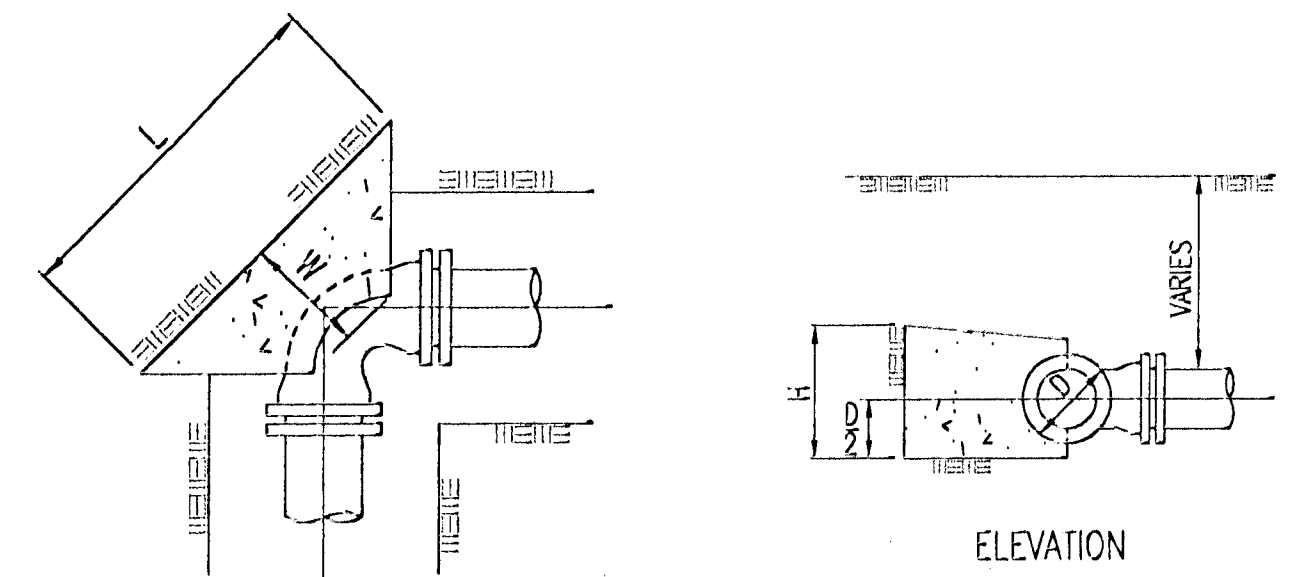
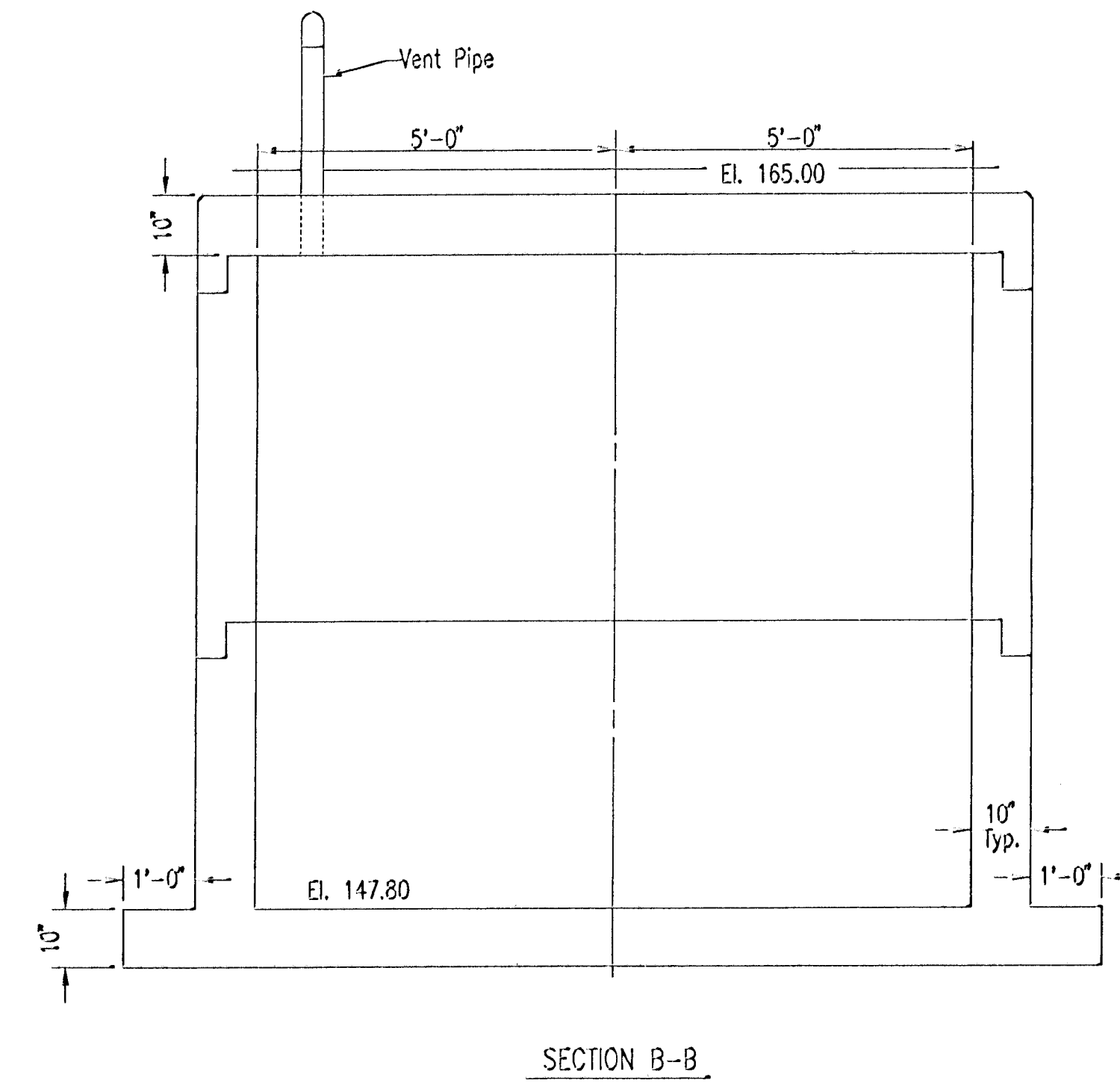
No.	Revision	By	Date
<b>NEWMARKET SQUARE TARGET NW TYPICAL SECTIONS</b>			
<b>Professional Engineering Consultants, P.A.</b> 303 S. TOPEKA • WICHITA, KANSAS 67202 316-262-2691 • FAX 316-262-3003			
Designed by	BER	Job No.	02693-002
Drawn by	GJR	Date	September, 2003
			Sht. 8 of 16

DSNR: BER OPER: GJR SCALE: 1=2.00  
 Q:\2002\02693\002\Site Civil\PUMPSTATION\10-39:50.dwg



5' x 5' x 4' High Insulated Fiberglass (Beige) enclosure. Enclosure to include locking hasp and louver(s). Kenco Plastics Company Inc. (Industrial Corrosion Products) or approved equal. Contractor shall verify enclosure dimensions w/ equipment supplier.

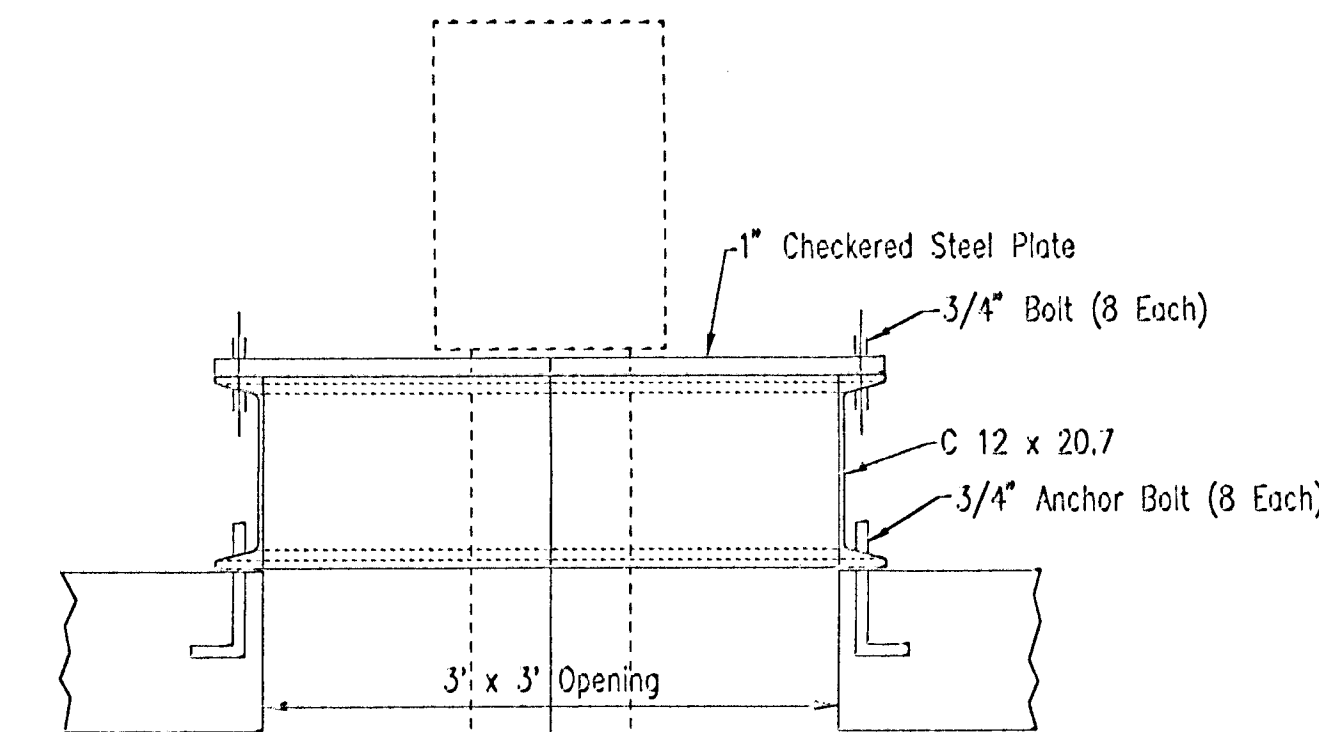
Neenah R-6034 Frame and Cover with type "C" drop handle and type "G" locking device.



**FORCE MAIN THRUST BLOCK DETAILS**

THRUST BLOCK SCHEDULE				
LINE SIZE	FITTINGS & ANGLE	DIM. L	DIM. W	DIM. H
12"	90°	2'-6"	2'-0"	1'-6"

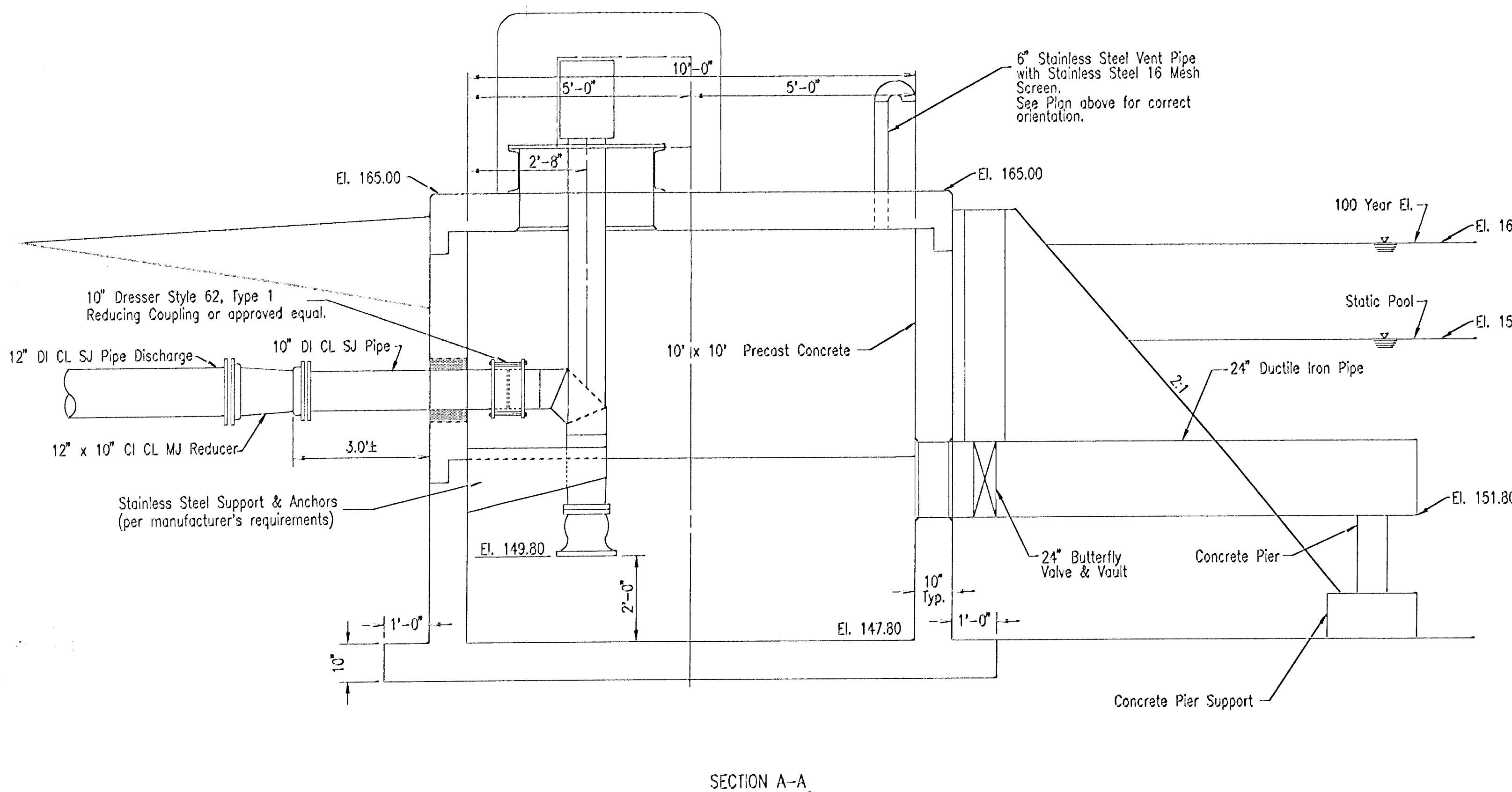
PUMP SCHEDULE					
TYPE	GPM	FT. HEAD	EFF. %	MAX. HP	RPM
MIXED FLOW	2,000	12	75% MIN.	10	1175



**PUMP MOUNT DETAIL**

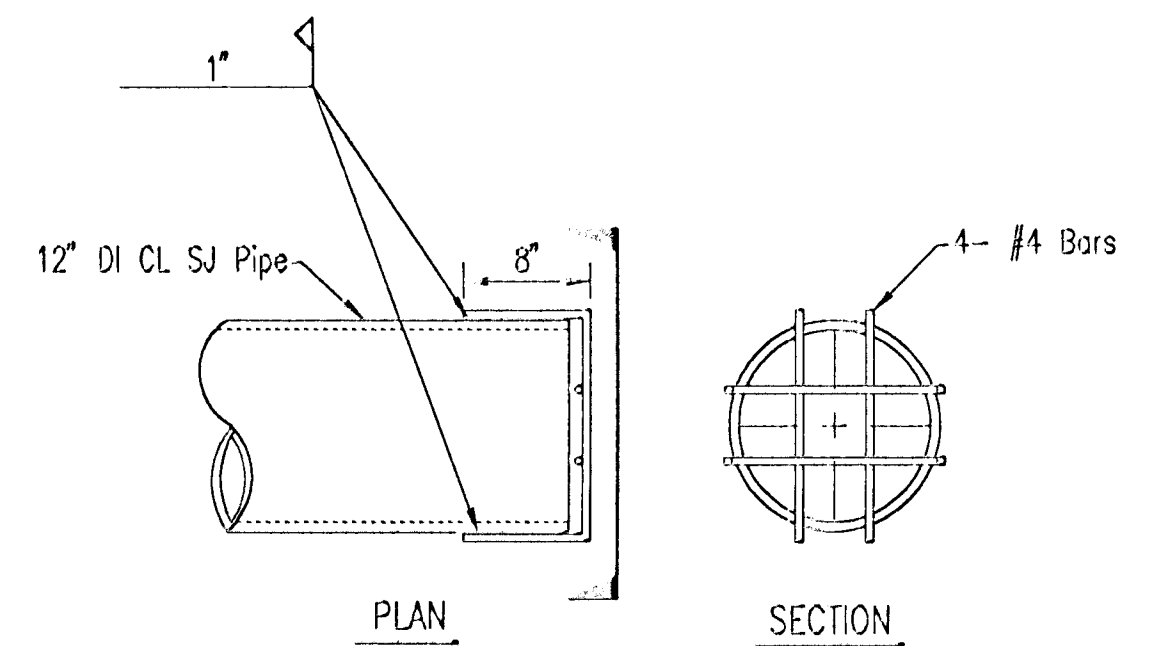
**PUMP STATION NOTES**

- THE CONTRACTOR SHALL COORDINATE WITH KGE/ELECTRIC COMPANY TO EXTEND ELECTRICAL SERVICE TO THE LIFT STATION SITE. THE CONTRACTOR SHALL VERIFY THE ELECTRICAL SERVICE REQUIREMENTS THAT WILL BE PROVIDED BY KGE. THE CONTRACTOR SHALL ALLOW 2 WEEKS FOR KGE/ELECTRIC TO PROVIDE SERVICE. ALL COSTS INCURRED TO EXTEND SERVICES TO THE SITE SHALL BE BORNE BY THE CONTRACTOR. THE CONTRACTOR SHALL CONTACT:  
KGE-ELECTRIC  
ATTN: SHANE PRICE  
120 E. 1ST. STREET  
WICHITA, KS. 67201  
PH (316) 261-6865
- THE WET WELL SHOWN IS A PRECAST STRUCTURE. ALL PRECAST SECTIONS SHALL CONFORM TO THE LATEST REVISION OF ASTM C-478, AND SUPPLIER SHALL SUBMIT DESIGN CALCULATIONS TO ENGINEER FOR APPROVAL. THE CONTRACTOR MAY, AT HIS OPTION, CAST THE STRUCTURE IN PLACE PROVIDED THE CONDITIONS OF THESE PLANS AND SPECIFICATIONS ARE MET AND HE SUBMITS DRAWINGS AND SUPPORTING CALCULATIONS ON STRUCTURE DESIGN, PERFORMED BY A LICENSED ENGINEER AND APPROVED BY THE PROJECT ENGINEER. ALL EXPOSED STRUCTURAL STEEL SHALL RECEIVE 2-5 MIL COATS OF TNEC SERIES 66 OR APPROVED EQUAL.
- IF A PRECAST STRUCTURE IS USED, PIPE PENETRATIONS THRU THE WET WELL SHALL BE GROUTED WATERTIGHT WITH WATER STOP GASKETS AS REQUIRED. IF THE CONTRACTOR ELECTS TO CAST ONE OR BOTH STRUCTURES IN PLACE, WALL PIPES SHALL BE USED FOR THOSE PIPE PENETRATIONS, AND DESIGN OF WALL AND REINFORCING SHALL BE PERFORMED BY A LICENSED ENGINEER AND SUBMITTED TO THE PROJECT ENGINEER FOR APPROVAL.
- CONTRACTOR SHALL SUPPORT ALL PIPING INSIDE THE WET WELL AS REQUIRED.
- ALL HARDWARE WITHIN THE PUMP STATION THAT IS REQUIRED FOR COMPLETE CONSTRUCTION OF THE PUMP STATION (CONNECTION PLATES, BRACKETS, BOLTS, ETC.) SHALL BE STAINLESS STEEL.
- CONTRACTOR SHALL LOCATE LEVEL CONTROL SO FUTURE FLOW INTO THE WET WELL WILL NOT INTERFERE WITH WET WELL OPERATION.
- THE COMPLETED DISCHARGE LINE SHALL BE PRESSURE TESTED IN ACCORDANCE WITH CITY OF WICHITA STANDARD SPECIFICATIONS FOR WATERLINE CONSTRUCTION AT THE PRESSURE RATING OF THE PIPE.
- ALL DUCTILE IRON PIPE AS REQUIRED SHALL MEET THE REQUIREMENTS OF THE CITY OF WICHITA STANDARD SPECIFICATIONS FOR WATERLINE CONSTRUCTION.
- PUMP SHALL BE AS MANUFACTURED BY CASCADE MODEL 10 WF, CM MF 1006A5.



**SECTION A-A**

**LIFT STATION**  
NOT TO SCALE



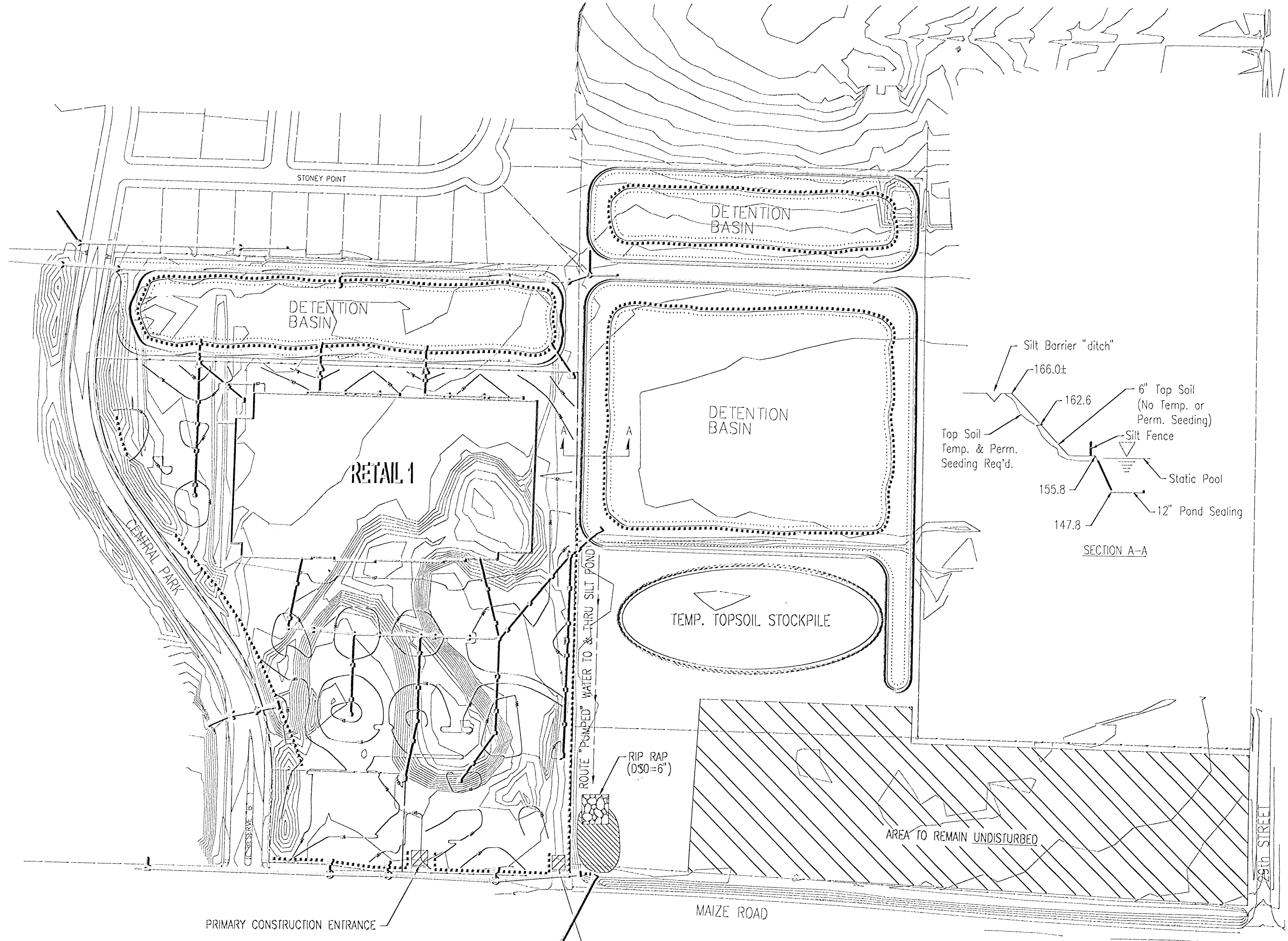
**12" OUTFALL DETAIL**

**SEQUENCE OF OPERATION**

- FLOAT SWITCH INITIATES PUMP START, WITH EIGHT (8) HOUR DELAY, AT STATIC POOL ELEVATION (155.80).
- PUMP CONTINUES UNTIL WATER LEVEL REACHES THE OUTFALL ELEVATION OF THE CROSS ROAD PIPE (CRP) AT MAIZE ROAD (158.80) OR LEVEL IS RETURNED TO STATIC POOL (155.80).
- WATER LEVEL REACHES 158.80 AND PUMP OPERATION STOPS. THE WATER LEVEL CONTINUES TO RISE AND/OR DISCHARGES THROUGH THE GRAVITY LINE TO MAIZE ROAD.
- PUMP AGAIN BEGINS OPERATING WHEN WATER LEVEL RETURNS TO 158.80.
- \* TIME TO DENAYER FROM MAIZE ROAD CRP TO STATIC POOL IS LESS THAN 4 DAYS.

No.	Revision	By	Date
<b>NEWMARKET SQUARE TARGET NW PUMP STATION DETAILS</b>			
<b>Professional Engineering Consultants, P.A.</b> 303 S. TOPEKA • WICHITA, KANSAS 67202 316-262-2691 • FAX 316-262-3003			
Designed by	BER	Job No.	02693-002
Drawn by	GJR	Date	September, 2003
			SM. 9 of 16

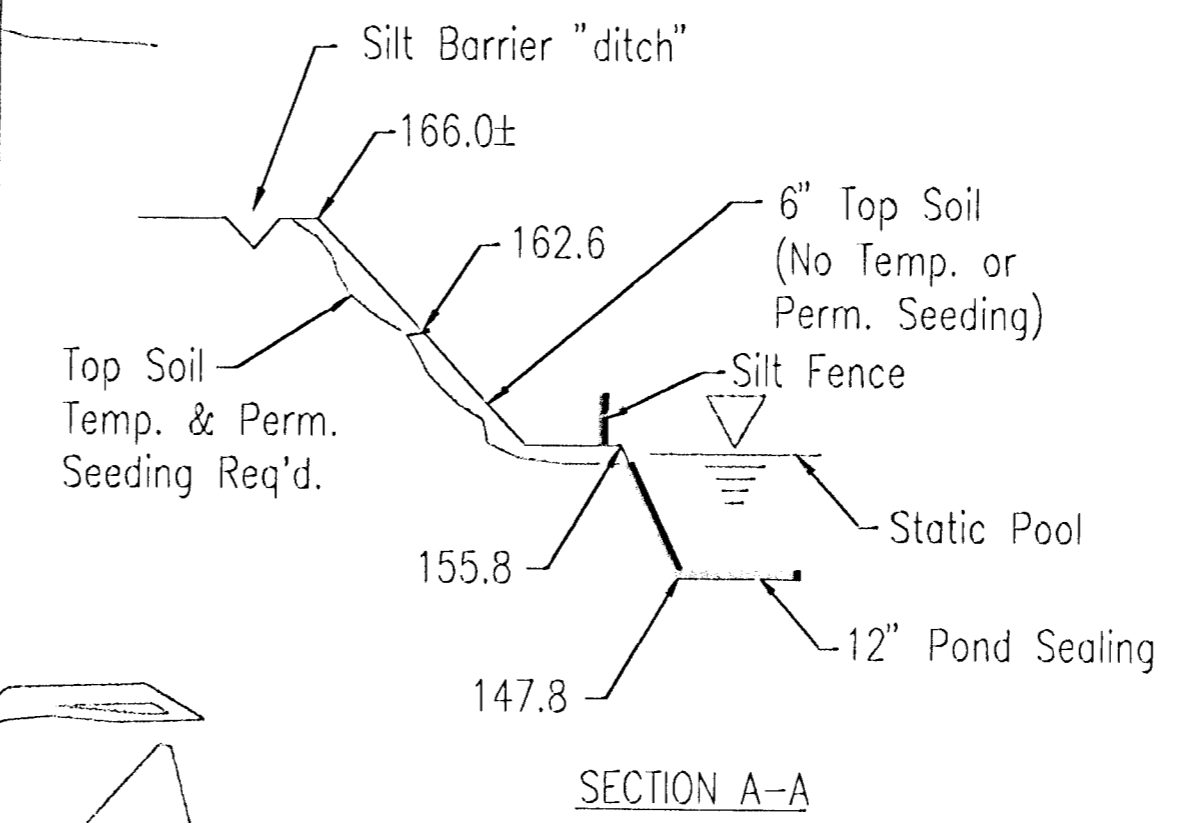
USNR: BRK OPER: GH SCALE: 1"=100' 01/2002/07/26/93/002/Site Civil/SWPPP 10-03-2003 10:40:31 am



1" = 100'

LEGEND

- INLET PROTECTION
- SILT FENCE
- SILT BARRIER "DITCH"
- CONSTRUCTION ENT.
- SILT POND



No.	Revision	By	Date
<b>NEWMARKET SQUARE TARGET NW SWPPP ATTACHMENT A</b>			
<i>Professional Engineering Consultants, P.A.</i> 303 S. TOPEKA • WICHITA, KANSAS 67202 316-262-2691 • FAX 316-262-3003			
Designed by	BER	Job No.	02693-002
Drawn by	GJR	Date	September, 2003

