

SRB

SCALE 1" = 100'
IRON = •

BRENTWOOD SOUTH ADDITION
DRAINAGE SUMMARY
June 7, 2001

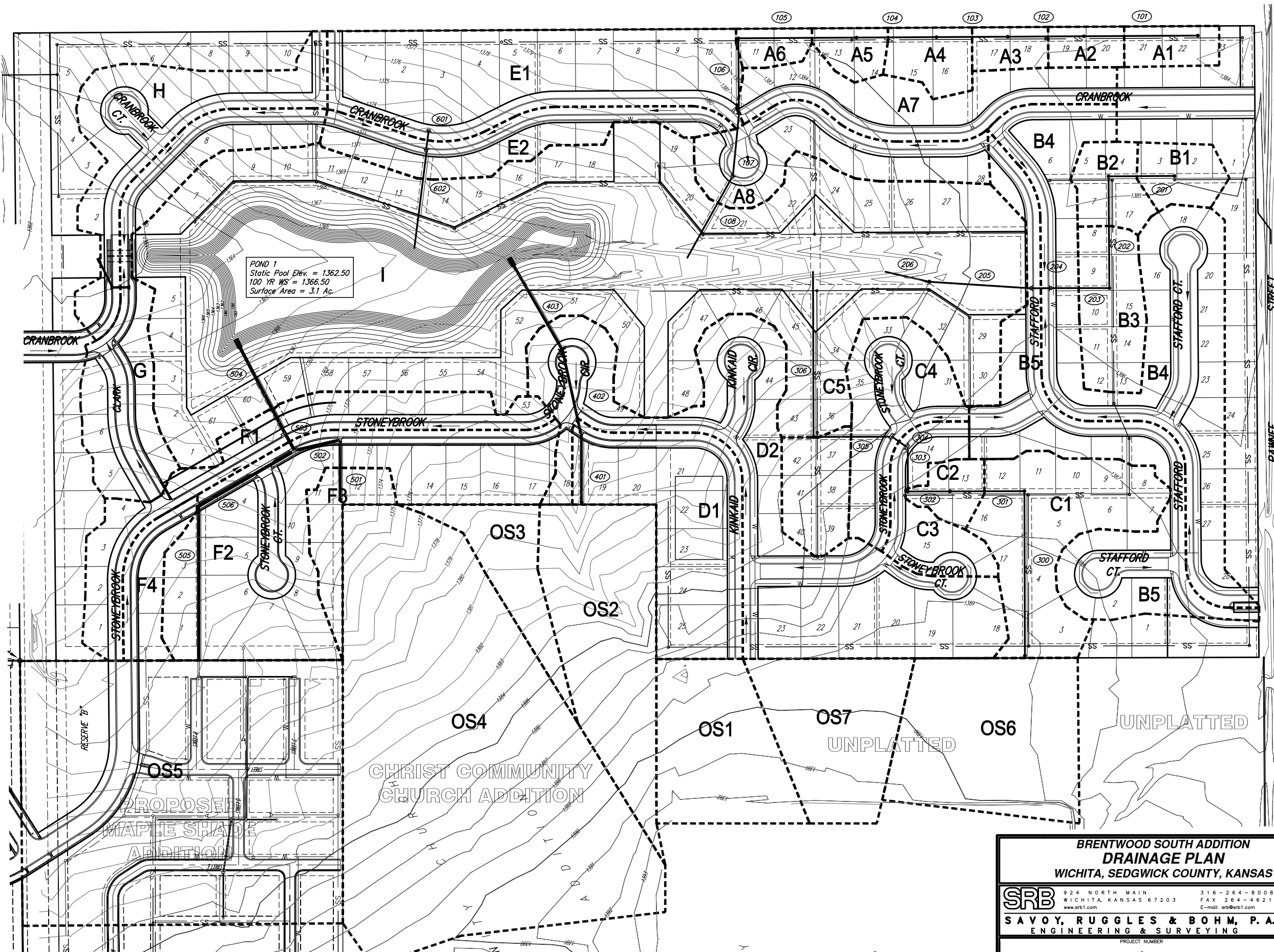
AREA	Tc	Soil Type "D"	C100				Q100	
No.	Acres	(Min.)	C2	I2	I100	Q2	Q100	
A1	0.39	15	0.30	0.65	3.73	7.37	0.44	1.87
A2	0.31	15	0.30	0.65	3.73	7.37	0.35	1.49
A3	0.33	15	0.30	0.65	3.73	7.37	0.37	1.58
A4	0.48	15	0.30	0.65	3.73	7.37	0.54	2.30
A5	0.35	15	0.30	0.65	3.73	7.37	0.39	1.68
A6	0.27	15	0.30	0.65	3.73	7.37	0.30	1.29
A7	2.03	15	0.50	0.76	3.73	7.37	3.79	11.37
A8	1.65	15	0.50	0.76	3.73	7.37	3.08	9.24
B1	0.51	15	0.30	0.65	3.73	7.37	0.57	2.44
B2	0.58	15	0.30	0.65	3.73	7.37	0.65	2.78
B3	1.04	15	0.30	0.65	3.73	7.37	1.16	4.98
B4	4.36	19	0.50	0.76	3.42	6.68	7.46	22.13
B5	3.05	19	0.50	0.76	3.42	6.68	5.22	15.48
C1	2.28	19.6	0.30	0.65	3.39	6.59	2.32	9.77
C2	0.37	15	0.30	0.65	3.73	7.37	0.41	1.77
C3	0.97	15	0.50	0.76	3.73	7.37	1.81	5.43
C4	1.56	15	0.50	0.76	3.73	7.37	2.91	8.74
C5	0.77	15	0.30	0.65	3.73	7.37	0.86	3.69
D1	2.57	22	0.50	0.76	3.17	6.28	4.07	12.27
D2	5.26	22	0.50	0.76	3.17	6.28	8.34	25.10
E1	3.68	15	0.50	0.76	3.73	7.37	6.86	20.61
E2	1.44	15	0.50	0.76	3.73	7.37	2.69	8.07
F1	2.09	15	0.50	0.76	3.73	7.37	3.90	11.71
F2	4.41	15	0.50	0.76	3.73	7.37	8.22	24.70
F3	0.65	15	0.30	0.65	3.73	7.37	0.73	3.11
F4	0.63	15	0.50	0.76	3.73	7.37	1.17	3.53
G	2.39	15	0.50	0.76	3.73	7.37	4.46	13.39
H	2.18	15	0.50	0.76	3.73	7.37	4.07	12.21
I	19.21	15	0.40	0.70	3.73	7.37	28.66	99.10
OS1	2.00	15	0.50	0.76	3.73	7.37	3.73	11.20
OS2	3.85	20.5	0.30	0.65	3.73	7.37	4.31	18.44
OS3	0.98	15	0.30	0.65	3.73	7.37	1.10	4.69
OS4	9.93	19	0.30	0.65	3.42	6.68	10.19	43.12
OS5	10.20	15	0.57	0.79	3.73	7.37	21.69	59.39
OS6	2.83	15	0.50	0.76	3.73	7.37	5.28	15.85
OS7	2.00	15	0.50	0.76	3.73	7.37	3.73	11.20

Note: Runoff generated by StormCAD may be lower due to increased system Tc.

* These areas drain to sumps that allow 100 year overflow or served by bypass inlets.
See StormCAD output for inlet flows.

PIPE SUMMARY

Pipe	Size	Grade	Q (cfs)
101	15"	0.50%	1.9
102	15"	0.50%	3.3
103	18"	0.50%	4.7
104	18"	0.50%	6.7
105	18"	0.50%	8.1
106	18"	0.50%	9.1
107	24"	0.50%	19.1
108	30"	0.30%	27.0
201	15"	0.50%	2.5
202	18"	0.50%	5.1
203	24"	0.50%	9.7
204	24"	0.50%	21.4
205	30"	0.52%	33.3
206	30"	0.51%	33.2
300	24"	0.51%	16.0
301	24"	0.51%	24.1
302	36"	0.30%	25.5
303	36"	0.30%	25.3
304	36"	0.30%	29.9
305	36"	0.30%	37.5
306	36"	0.28%	40.4
401	24"	1.00%	16.3
402	24"	1.20%	31.5
403	30"	3.76%	66.0
501	36"	0.80%	46.8
502	36"	2.13%	46.4
503	42"	1.00%	130.0
504	42"	1.00%	140.5
505	36"	1.50%	59.9
506	42"	0.50%	62.5
601	18"	0.50%	20.8
602	24"	3.08%	28.9



**BRENTWOOD SOUTH ADDITION
DRAINAGE PLAN**
WICHITA, SEDGWICK COUNTY, KANSAS

	924 NORTH MAIN WICHITA, KANSAS 67203 www.srb1.com	316-264-8008 FAX 264-4621 E-mail: srb@srb1.com	SRB JOB No.
	SAVOY, RUGGLES & BOHM, P. A. ENGINEERING & SURVEYING		
PROJECT NUMBER			
DESIGN	DRAWN	UTILITY	REVIEW
KWL	KWL		
DATE		REVISED	
June 7, 2001			