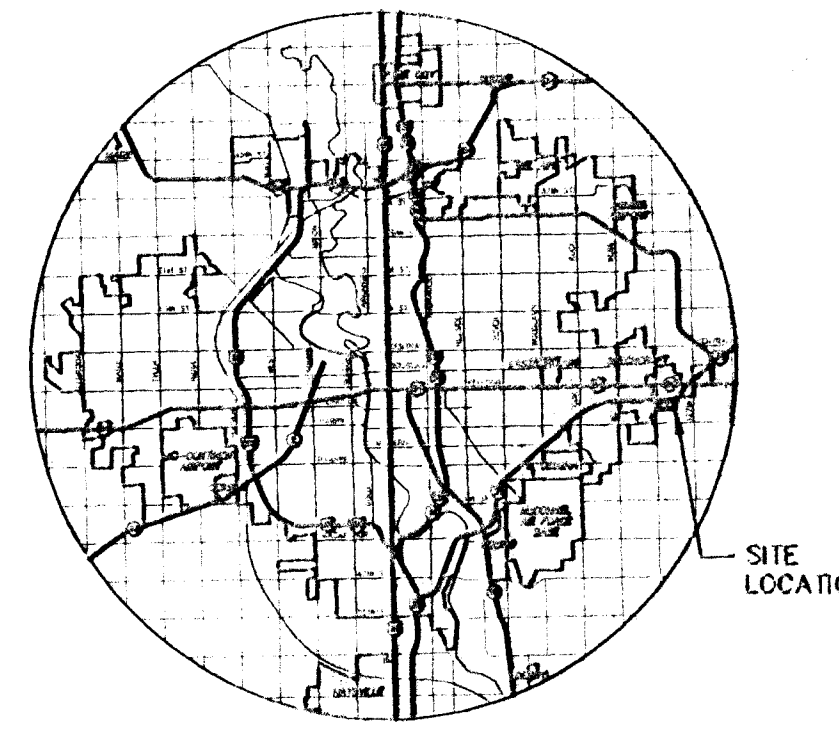
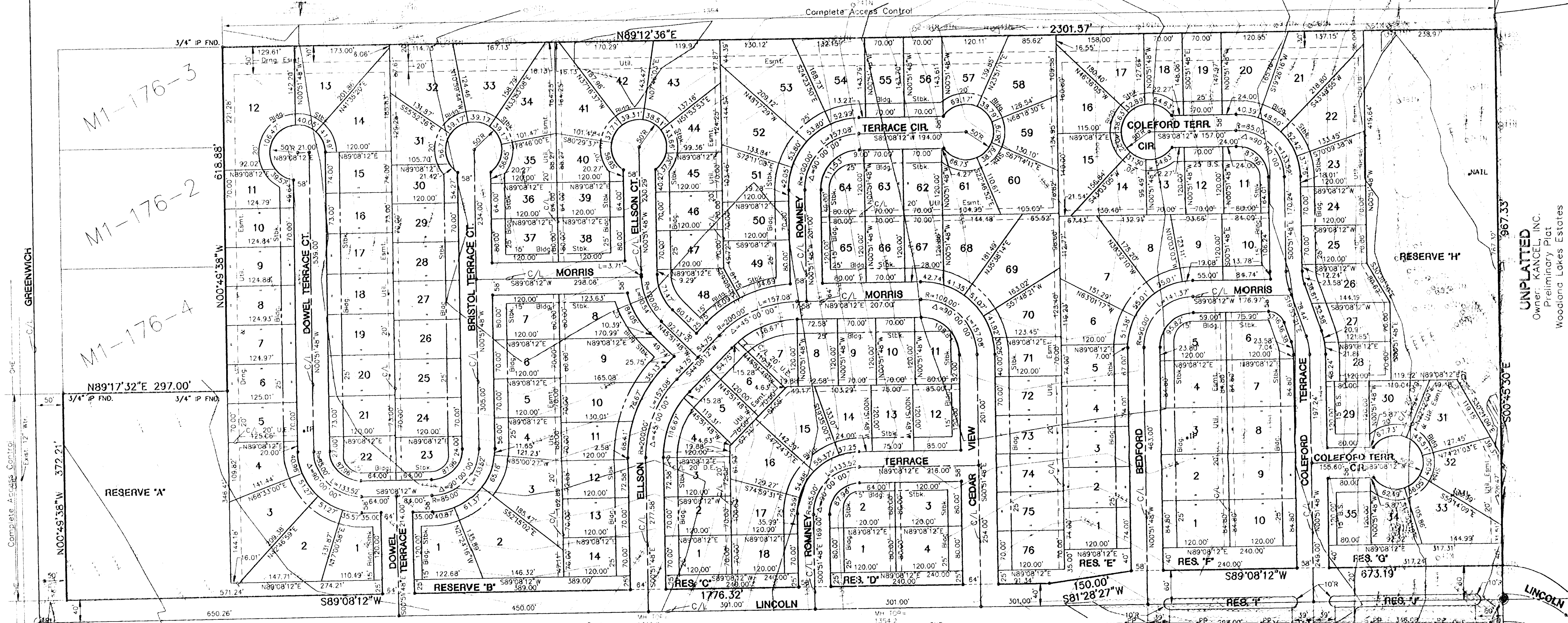


NW Cor., NW 1/4
Sec. 27, T27S, R2E

KANSAS TURNPIKE AUTHORITY
CONDEMNATION CASE A-54126



LOCATION MAP

UNPLATTED
Owner: KANCEL, INC.
Preliminary Plat
Woodland Lakes Estates

ZONING
EXISTING - SF20
PROPOSED - SF6
(CHANGE BY ANNEXATION)

RESERVE A-H
UTILITY EASEMENT
LANDSCAPING
BERMING
OPEN SPACE

RESERVE A, H
DRAINAGE
LAKE

RESERVE I & J
ENTRY MONUMENT
LANDSCAPING
BERMING
OPEN SPACE

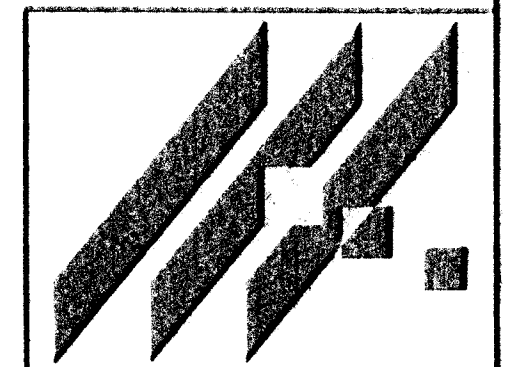
RESERVE A
ENTRY MONUMENT

BENCHMARKS
BM#1 80d in HLP 105' E & 45' W of 1/4 cor.
Elev.=1334.61

SCALE: 1"=100'
Date: 4/22/96
Survey:
MKEC 4/96

PRELIMINARY PLAT CEDAR VIEW ADDITION

OWNER: LEEWOOD HOMES, INC.
JOE LEE, PRESIDENT
3600 N. ROCK ROAD BLDG. 2200, STE. 204
WICHITA, KANSAS 67226



MID-KANSAS ENGINEERING
CONSULTANTS, INC.
411 N. WEBB ROAD
WICHITA, KS. 67206
316-684-9600

Sheet
1
of
1